

News

**KOMATSU EUROPE
ANNOUNCES THE
NEW SUBMONITOR
FOR WHEEL**

Page 44

News

**STEELWRIST AT THE
CONEXPO SHOW
IN LAS VEGAS**

Page 48

Business

**HYUNDAI DOOSAN INFRA-
CORE REVEALS NEW
“DEVELONE” BRAND FOR
CONSTRUCTION EQUIPMENT**

Page 12

Special feature

**FULLY AUTOMATIC
QUICK COUPLING
SYSTEMS**

Pages 16-20

News

**THE RIGHT TOOL
FOR THE JOB**

Page 22

WHAT'S NEW IN CRUSHING AND

SCREENING ATTACHMENTS?

Pages 36-41

Shows

**CONEXPO-CON/AGG 2023
SET TO BE THE BIGGEST
SHOW YET**

Pages 28-31

Special Feature

**DRY TECHNIQUES
ARE COMING TO THE
FORE IN CORE DRILLING**

Page 52-54

YOUR ALL-NEW 22 VOLT CORDLESS PLATFORM

HILTI



Nuron is the all-new 22V cordless platform comprising more than 70 tools that deliver more power than higher voltage, corded or gas-powered equivalents for a broad range of applications. Nuron uncompromises your tool park by pairing high performance tools with data-driven services.



SCAN TO
DISCOVER
MORE

#UNCOMPROMISE
Find out more: www.hilti.group

NURON



ONLY WIRE

WIDECUT

18:19



**BEYOND EXPECTATION
ONLY WIRE !**



Groove



Ø15.0*40 bpm

Steel



Ø10.2*48 bpm

Concrete



Ø10.5*40 bpm

Finish



Ø9.0*48 bpm

www.widecut.com



Professional Demolition International Magazine

Address: P.O. Box 786,
SE-191 27 Sollentuna, SWEDEN

Visitors address:
Skillingevägen 14A, SE-192 71 Sollentuna, SWEDEN

Phone: +46 8 631 90 70
E-mail: info@pdworld.com
Website: www.pdworld.com
ISSN Registration: ISSN 1650-979X

EDITORIAL STAFF

Editor-in-Chief
Jan Hermansson, Jan.Hermansson@pdworld.com

Assisting Editor-in-Chief
Anita do Rocio Hermansson,
Anita.Hermansson@pdworld.com

Editor: Vitor Hermansson, vitor@pdworld.com

Editor Europe: Mikael Karlsson,
mikael.karlsson@pdworld.com

Editor North & Central America
Jim Parsons, jim.parsons@pdworld.com

Editor South America
Luiz Carlos Beraldo,
luizcarlosberaldo@gmail.com

Editor Russia & Eastern Europe
Andrei Bushmarin,
andrei.bushmarin@pdworld.com

Editor Africa
Kevin Mayhew,
designmp@iafrica.com

SALES OFFICES

International Sales Director
Germany/Austria/Switzerland/UK & Ireland
/BeneLux/Finland/France/Spain/Portugal and Italy
Andrei Bushmarin
Phone: +7 921 949 27 81
E-mail: andrei.bushmarin@pdworld.com

Sweden/Norway/Denmark/Liechtenstein/North America/South America
André Hermansson
Phone: +46 (0)8 631 90 70, Mobile +46 (0)70 979 04 03
E-mail: andre@pdworld.com

Australia/New Zealand/Asia Pacific/Korea/Japan and rest of the world:
Contact PDI editorial office in Sweden
Phone: +46 (0)8 631 90 70, Mobile +46 (0)70 979 04 03
E-mail: info@pdworld.com

Publisher
Jan Hermansson

The magazine PDI, Professional Demolition International is published five times per year with a worldwide circulation of 10000 copies. The annual airmail subscription rate is US\$ 45. All subscription correspondence should be directed to: The subscription department, SCOP AB, P.O. Box 786, SE-191 27 Sollentuna, Sweden. PDI is mailed by second class postage. ©Copyright SCOP AB 2000-2020

Cover picture: Epiroc

PDI Magazine is a member of the following associations:



CONTENTS

PD*i* • issue no. 1 January - February 2023 • Volume 23

REGULARS

Editorials

- 6 Excitement for the new projects!
- 8 Visit to Brazil a break from the turmoil in Europe
- 10 2023, a year full of excitement and work

Associations

- 6 Demolidora new member of EDA
- Construction equipment sector starts the new year with momentum
- Congratulations CSDA 50 years

Business

- 8 BHS-Sonthofen announces leadership changes
- 10 Bobcat telehandlers play key role for Colours of Ostrava Festival
- 12 Relief aid for earthquake damage
- Hyundai Doosan Infracore reveals new 'Develon' brand for its construction equipment
- Erkat moves into a new production facility
- 14 20 years as Italian dealer
- Hilti and IMD launch scholarship programme
- Senya Micro Plant, mobile crushers now made in USA

News

- 22 The right tool for the job
- 24 Tana North America and Humdinger Equipment at ConExpo/ConAgg
- Drum cutter impresses in rock
- 35 Indoor atomised dust control creating safer workplaces
- 44 The new Allu 'Variable Drum'
- Komatsu Europe announces the new 'SubMonitor' for wheel
- 46 Yanmar to exhibit at Con/Expo 2023
- 48 Steelwrist at the ConExpo show in Las Vegas, 14-18 March, 2023
- 51 6,000m² of retail space renovated during ongoing operations
- 57 Kleemann announces new 'Mobibelt' mobile stackers for optimised logistics
- Game changer for professionals
- 64 New GPR system from Sensors & Software
- 'Work Buddy' from TDBS
- 66 Raising the 'bar' with boosters
- BeBoSa is back again!
- 68-69 Simex – The road to ConExpo-Con/Agg 2023
- 74 The new diamond disc saw TS40 LH from Weka designed for left handers
- Dynaset's global sales manager Perttu Mäkinen



- 76 The ultimate solution
- The new GDT 890
- Ausa plans major showcase at Conexpo
- The all new 'Lavina' S7 grinders from Superabrasive
- 78 Excellence in floor preparation
- 82 MBI company
- Jobsite Report**
- 32 HP 1200 hammer and an IHC 75 serving civil construction in Australia
- Indeco takes on a big dig
- 81 Ukrainian contractor executes challenging underwater project
- Shows**
- 26-31 CONEXPO-CON/AGG 2023
- 58-62 It's all good at the World of Concrete 2023
- 70 Spotlight on sustainable technologies at bauma Conexpo India
- 73 Sixteen category winners and a design award

Special Features

- 16-20 Quick coupling systems
- 36-41 Crushing and screening attachments
- 52-54 Core drilling

LAVINA

by  **SUPERABRASIVE**

 **CONEXPO
CON / AGG**

BOOTH #C32914

INTRODUCING THE ALL-NEW **S7 GRINDERS**



superabrasive.com/series7

**MORE TORQUE
BETTER CONTROL
LESS MAINTENANCE**



**DESIGNED TO
OUTPERFORM**

STARTING 2023 WITH EXCITEMENT FOR THE NEW PROJECTS!

So, my first year as the IACDS president begins. Not only it's a great honour to join the board of directors of this association, it's also a great opportunity and responsibility. That said, what is our course of action now?

The last couple of years had a profound effect on all of us. The pandemic and the 'new normal' it left behind is something we are still struggling to adjust to. The complex economic situation is also something we have in mind. In these conditions, working and moving forward can be a challenging task. Since there are still a lot of uncertainties brought upon us by the economic crisis, international conflicts and other limiting factors, such as the recent natural disasters in various countries, the future of the industry is very hard to predict.

Through all of this, the IACDS and our member associations, contractor members and manufacturers have proved, time and time again, their strength and resilience when faced with adversities. Their willingness to share their knowledge and exchange ideas and projects is the key in the success of all the involved.

However, as the time passes, the world moves on. Every year, more companies and associations come back together in order to solve the current problems and help the industry grow. We can see this through the return of the face to face events, such as BeBoSa 2023, which is taking place this March.

So, in order to contribute to this tendency, we are very excited to announce the IACDS Annual Convention, which will take place in Venice, Italy, on 25 and 26 May. With this event, we are aiming to reunite the industry professionals in order to discuss the current situation, work hand in hand with each other, as well as gain a deeper insight about the state of the concrete drillers and sawers industry.

Meanwhile, on the other side of the globe, CSDA is launching its annual convention! The event is scheduled from 29 to 31 March in Hamilton, Bermuda. Commemorating the association's 50th Anniversary, our goal is to reignite this event and, most importantly, meet each other face to face and have a great time!



Douglas Walker, president of IACDS

Overall, for myself, the bottom line is this: while the pandemic has changed a lot, every day we are getting closer to how things were before Covid-19. Moving forward whilst learning from the past, continue to improve our associations and companies and grow as professionals should be our main goal. This 2023 is a very promising year for everyone; let's give it the best we have to offer.



Demolidora new member of EDA

The European Demolition Association, EDA, is pleased to announce that Demolidora FBI is a new member.

Demolidora FBI has been active in the industry since 1986, becoming one of the most renowned demolition and earthworks companies in Brazil. Currently, FBI Demolidora's greatest concern is meeting client demands, as well as safety requirements and other requirements that regulate the industry. Another of its major concerns has long been practicing actions of commitment to the environment. The conscious execution of the work, the correct and documented disposal and transport of materials, the correct classification of materials and the use of the recycled material in their

work, are just a few examples of the company's commitment to the cause. One of the most famous projects the company was involved in was in Nova Grecia (Osasco) in 2016.

The European Demolition Association, EDA, was founded in 1978 and is the European platform for national demolition associations, demolition contractors and suppliers. EDA organises each year activities to get together the demolition industry from all over Europe, with the most important one being its annual convention, a meeting that includes a technical part with presentations about key topics and optional leisure activities. EDA also produces reports about the industry, to measure and analyse its evolution.

Construction equipment sector starts the new year with momentum

The manufacturers of construction equipment with production in Germany have reported a strong year end spurt that enabled them to increase turnover by 3% in real terms for 2022.

The mood among customers is largely good, according to feedback from participants at the annual meeting of the VDMA construction equipment specialist group in Frankfurt at the beginning of February. In nominal terms, the industry reached a new record last year. Even though the order intake in this period is down 21% due to a base effect – in 2021 the order intake increased dramatically as a result of the economic recovery following the pandemic – manufacturers are still benefiting from full order books that guarantee capacity utilisation at least until the middle of this year. The only negative trend at the moment is in building construction, as higher interest rates are putting pressure on the residential construction sector.

Global sales of construction machinery fell by 4% in 2022. A mix of the housing crisis and zero tolerance Covid policies in China caused the market there to slump by

43%. North America and the European home market, on the other hand, grew at double digit rates despite supply bottlenecks. In Europe, growth was concentrated in Southern and Central Eastern Europe. The largest markets, Germany, France and Great Britain, were stable.

"Nobody fears production cutbacks due to the energy crisis; our manufacturers want to expand their workforce or at least keep it stable," commented Franz-Josef Paus, chairman of VDMA Construction – Equipment and Plant Engineering. "Our construction equipment sector is currently proving resilient to the energy crisis, inflation and supply chain disruptions," Joachim Strobel, chairman of the VDMA's Construction Equipment Specialist Group, concluded.

www.vdma.org/baumaschinen-baustoffanlagen
www.cece.eu



Congratulations CSDA 50 years

The North American branch association CSDA, Concrete Sawing & Drilling Association, is celebrating 50 years. PDi and certainly all industry colleagues around the world want to pay attention to that.

CSDA is one of the world's oldest trade associations for concrete cutting firms and was founded back in 1972. Today it has over 500 members. The celebration of the 50-year-old will take place in connection with CSDA's annual meeting and Tech Fair, which will be held March 29-31 at the Hamilton Princess Resort & Beach Club in Bermuda in the middle of the Atlantic.

It will be three intensive days of education, lectures, golf competition, leisure activities and a festive celebration.

The members of CSDA are mainly US and Canadian entrepreneurs, but the association also has a lot of foreign members from other continents. Briefly about the program during the

annual meeting is that it begins with a welcome by CSDA's sitting president Mike Orzechowski and the association's Executive Director Erin O'Brien. Keynote speakers are Matt Dricks and Sean Lux. There will be several interesting lectures on completed projects, such as the renovation of Vancouver's airport runway, given by Brian Wnuk. The annual meeting continues with a roundtable discussion and the Tech Fair, where a number of suppliers showcase their products. To this must be added a series of other lectures and presentations. You can find the complete program on CSDA's website.

PDi Magazine has for many years had a fine collaboration with CSDA, among other things through the international umbrella organization IACDS, of which CSDA is one of the founders.

Big congratulations CSDA on 50 years in the industry.

www.csdas.org

edition 5
ZENESIS

WORLD'S MOST ADVANCED
PATTERNED DIAMOND TECHNOLOGY

DESIGN
YOUR OWN
PERFORMANCE

☐ DYNAMIC ☐ COMFORT



EHWA DIAMOND IND.CO.LTD. www.ehwadia.com | salesinfo@ehwadia.co.kr | Tel 82 31 370 9300 Fax 82 31 370 9191



VISIT TO BRAZIL A BREAK FROM THE TURMOIL IN EUROPE

For four weeks starting at the end of January and including almost all of February, I had the privilege of staying in Brazil. I have visited the country many times since 1985. What struck me this time was that my visit was a break from the unrest in Europe and the war in Ukraine. I felt far removed from everyday life in Europe. I am aware that our brothers and sisters in Ukraine cannot treat themselves to the privilege of pausing for a few weeks from the misery they are experiencing, but instead are forced to face the horrors of war every day.

Brazil is an amazing country in many ways. But since my first trip to the country in 1985, Brazil hasn't really changed as much as you might think. The majority of the population are still poor, although there is no famine like in other countries at the same stage of development. A few percent of the population own most of the assets, but despite this, the middle classes have fared significantly better in the last two decades.

At the end of 2022, Brazil had an election. The fight was between the incumbent president Jair Bolsonaro and Ignasio Lula da Silva, which Lula won by a few percentage points. There has been a lot of controversy regarding Bolsonaro during the four years he has been in power and he managed to do some 'piano stomping' during his mandate. He had the attitude that the Covid pandemic was just flu and nothing to worry about, and he more or less looked away when landowners ravaged the Amazon forests.

In the state of Pará, so-called 'garimpeiros' or gold diggers, have destroyed the fishing waters of several Indian tribes, including the Yanomami. This has led to an acute shortage of food and the waters becoming polluted leading to outbreaks of cholera, among other things. A large amount of aid has been sent in order to alleviate the suffering of the Indian tribes and provide them with care. Bolsonaro has now been strongly criticised for supporting the mining companies that destroyed the land instead of helping the Indian tribes that were affected.

On the other hand, even Bolsonaro's opponents admit that during his term of office he succeeded in boosting the domestic economy. Above all, this was noticeable in investment within the infrastructure and many new ventures in terms of the construction of homes and commercial property. For example, I had the privilege of visiting a project where a new bridge is being built between Brazil and Paraguay over the Iguaçu River in the city of Foz do Iguaçu. It is the hydropower conglomerate Iguaçu, located on the Brazilian side that has financed the project. The bridge is expected to be ready later this year. We hope to publish a separate article about the project in the spring.

The optimism felt due to the many ongoing construction projects, a strengthened Brazilian Real and more, means that the market for those who work with demolition, concrete hole punching and grinding and polishing of concrete floors in Brazil is highly favourable right now after several years of uncertainty. 2015 PDi Magazine planned to organise the Latin American Concrete Cutting & Demolition Forum in Rio de Janeiro after several years of growth in the Brazilian market as the situation was favourable. Unfortunately, the economy took a sharp downward

turn in 2014, meaning that the conditions for such an event died out in just a few weeks. But now the situation looks different, and perhaps there are conditions for looking again at the idea.

This issue of PDi magazine is the trade show issue for the American trade show ConExpo-Con/Agg in Las Vegas in mid-March. Hopefully you will find lots of interesting reading in this issue, so stay tuned.



Jan Hermansson
Editor-in-Chief
jan.hermansson@pdworld.com



BHS-Sonthofen announces leadership changes

The Recycling Technology division of BHS-Sonthofen has a new head following the retirement of Alfred Weber, who had successfully managed the division since 2007.

Alfred Weber has witnessed a number of milestones at BHS-Sonthofen. The Recycling division was still in its infancy when Weber started working in sales at BHS 20 years ago. At that time, he was in the construction machinery and special mixing technology sales area. Starting in 2007, Weber was put in charge of sales for the Recycling division. "The initial challenge was to build the sales network for recycling machinery and associated solutions from the ground up. Back then, it was about machines and plants with impact crushing, which were already used for the processing of residual materials containing metal. It was only years later that the tearing and cutting technology was added," states Weber.

BHS now offers complete plant solutions, including control and sorting technology, all from a single source. BHS has developed proprietary innovative processes such as the recycling of lithium-ion batteries, keeping in tune with the times. "Mr. Weber has been instrumental in making BHS an established brand in the recycling industry today. We sincerely thank him for his work and commitment over the past 20 years," says Dennis Kemmann, managing director of BHS-Sonthofen, summing up Weber's career with the company.

BHS continues to grow with recycling expert Daniel Zeiler

As BHS moves into the future, it will be Daniel Zeiler's task to further establish the company's foothold in this market segment. Hailing from the Rhineland, Zeiler, who is 48 years old, has worked closely in the area of machinery and plant engineering for the recycling industry for over 20 years. He spent more than ten years in a management position with an international equipment supplier for the scrap processing industry and most recently he spent five years as head of sales at a plant manufacturer in the plastics recycling industry. Zeiler joined BHS-Sonthofen in September 2022.

"We have exciting tasks at BHS, as we will continue to build up the new market

segments, such as battery recycling, and at the same time grow with the established products, such as the processes for fine processing of metalliferous wastes. I see great potential in this intersection of proven products and new ideas, and at BHS, the necessary know how and innovative spirit to develop new solutions for the industry," says Daniel Zeiler.

Future oriented strategy and new point of contact

There have been several new developments at BHS-Sonthofen in recent years. One of these developments included a focus on individual business areas, which are now even more closely aligned to the specific needs of the respective customers. Another change involved a consistent expansion of the product and service portfolio. Zeiler, who now heads the Recycling Technology division as vice president, combines the responsibilities for sales, project engineering, process development, and the test centre. "We are delighted to welcome Mr. Zeiler into the fold, a colleague who will maintain continuity in the Recycling Technology division with great pleasure and commitment, while at the same time working with us to further expand the market position of BHS," remarks Dennis Kemmann on the choice of the new vice president.

"I am looking forward to continuing the BHS success story as part of a strong team with flat hierarchies. The proximity to the mountains is a clear advantage after having relocated," says Zeiler, who enjoys pursuing various mountain sports in his spare time, explaining his decision for accepting the new position. Alfred Weber confirms the positive working atmosphere and looks back with gratitude on his time at BHS: "It was a nice time: the great colleagues, customers and partners, the short decision making processes, and an employer who always supported my further personal development. I've been able to drive many things forward at BHS over the last 20 years, but now it's time for me to just drive my Harley instead."



EAGLE 3

BUILT TO PERFORM
ENGINEERED TO LAST



2023, a year full of excitement and work

As my first year as president of the European Demolition Association begins to take its course, I would like to take this as an opportunity to share my thoughts about the current state of events, as well as the impact it might have on the demolition, decontamination and recycling sector.

2023 is an exciting and challenging year for EDA. Following the uncertainty brought by the Covid-19 crisis, we are starting this year with the goal of reaching more people and launching new initiatives that will make the DDR industries grow and improve.

The current economic situation has a direct impact on the sector. There is widespread concern on the demand side about rising interest rates, which affects all of us. Nonetheless, it is very difficult to make an overall analysis and predictions, as every country has its own conditions and nuances.

Taking Italy (which is the field of work I'm most familiar with) as an example, stability is something we expect in 2023. In this case, strong European support coupled with the upcoming 2026 Winter Olympics hosted in Milan, allows us to have an optimistic forecast of the economic situation. Altogether, I think that the first half of 2023 will provide the industry with a strong boost due to the results of the past year, which were generally good.

As for the second part of the year, there are still a lot of factors awaiting resolutions that will determine its outcome. The international conflicts, such as the war in Ukraine, as well as the general increase in raw material prices and limited availability and storage of components, make it difficult to make accurate predictions and analysis.

However, there are a lot of positive aspects that we look forward to this year. The main one is the return of face to face events. They are key to promote collaboration between international and national associations, contractors and

suppliers in order to face the challenges of the market, gain exposure and discover new projects and, most importantly, learn from each other. In line with this idea, EDA will be celebrating its annual convention in Amsterdam, from 15 June to the 17 June.

Overall, while it is difficult to predict the future of the industry given the current climate, I would like my message to be hopeful. The demolition, decontamination and recycling industry in Europe needs our union more than ever; so, we must keep working towards joint solutions.

As a farewell, I'd like to wish my colleagues in the industry a prosperous New Year, and I am thrilled to continue working together for the betterment of the demolition, decontamination and recycling industries in Europe.

About EDA

The EDA was founded in 1978 and is the leading platform for national demolition associations, demolition contractors and suppliers. The EDA has a strong focus on developments in Europe, which are of interest to the demolition industry.

info@europeandemolition.org
www.europeandemolition.org



**Stefano Panseri, President of EDA,
European Demolition Association**

EDA
EUROPEAN
DEMOLITION
ASSOCIATION



Bobcat telehandlers play key role for Colours of Ostrava Festival

The abilities of Bobcat telehandlers was ably demonstrated in the key role they played in the preparation of one of the biggest music festivals in the Czech Republic - the legendary Colours of Ostrava.

Five Bobcat telehandlers from the largest T40.180SLP and T36.120SL models to the smaller TL38.70HF and two TL35.70HF machines, helped 'on the set' during the build-up to the festival. A Bobcat S590 skid steer loader also assisted in smaller tasks on the ground. An integral part of the work of telehandlers involved the use of specialised attachments such as a work platform.

Saving time and money

"I have been using Bobcat products in the construction of festivals for 10 years now," says Josef Ženíšek, technical director of Colours of Ostrava. "We often use them in combination with a work platform, because it has the advantage of a high load capacity compared to standard height platforms. So we can install more lights in one go, which means a big saving in time and costs."

As part of the often hectic preparations for the festival, Bobcat machines are used by a number of different staff. They often have the opportunity to try something new - in this case they provide valuable feedback back to the company's headquarters (Doosan Bobcat EMEA is based in Dobruška in central Bohemia, where it has a production plant, an innovation centre for development, the headquarters for the EMEA region and where training for customers also takes place).

The telehandlers can handle a number of tasks, including, for example, the transportation of equipment for bands, installation of lights and decorations, general handling of materials during construction, and transportation of concrete blocks for use as part of temporary structures. The S590 loader is primarily used for landscaping around the site.

The new 'R-Series'

As part of the festival, the Bobcat machines included the latest models from the company's new R-Series range, providing the most modern technology that the company launched on the market only last year. These are fully proven products, which Bobcat manufactures in France. They offer a range of lifting heights from 6m to 18m with maximum lift capacities from 2.5t to 4.1t, with Bobcat aiming to double its market share through this new range. With a newly configured drivetrain, the new models enable smoother execution of the most difficult tasks at height with surgical precision. Thanks to the combination of the boom positioning system, a state of the art high precision joystick, the inching function for precise movements and better visibility from the cab, the series aims to make working at height easier than before.

Colours of Ostrava is a multi-genre international music festival held annually in Ostrava since 2002. Since 2012, it has been held in the breath taking surroundings of Dolní Vítkovice - the former site of smelters, mines and iron works. The most recent, its 19th, offered over 350 programme items on 19 open and covered stages consisting of concerts, discussions, theatres, films, workshops and art activities. The headliners were The Killers, Twenty One Pilots, Martin Garrix, LP, Franz Ferdinand, along with many other performers.

Colours of Ostrava 2023 will include a line-up of 113 bands (66 foreign, 47 Czech), have seven theatre companies, show 10 films, and 26 programmes for children. There will be 250 presenters on the melting pot discussion forum, 240 food stalls, 80 beverage tents and see 13km of fencing erected.

The ultimate solution for cutting concrete with high degrees of reinforcement



WSL-ULTRA FAST CUT

The wall saw blade for highest cutting performance, ideally suited for concrete with a very high degree of reinforcement.

The perfect companion for the WSE1621 wall saw.



EVENTS

CONEXPO-CON/AGG 2023

14-18 March, 2023
Las Vegas Convention Center,
Las Vegas, USA

www.conexpoconagg.com

BEBOSA 2023

German sawing and drilling
association convention
23-25 March, 2023
Willingen, Hochsauerland,
Germany

www.bebosa.com

SAMOTER 2023

3-7 May, 2023
Verona Exhibition Centre
Verona, Italy

www.samoter.it

IDA CONVENTION AND DEMTECH TRADESHOW

28-29 September, 2023
Bangalore, India

www.indiandemolition.org
www.demtech.in

WORLD OF CONCRETE

Las Vegas Convention Center,
Las Vegas, USA

www.worldofconcrete.com

INTERMAT 2024

24-27 April, 2024
Villepinte, Paris Nord,
France

www.intermat.fr

DEMCON 2024

September 19-20, 2024
InfraCity, Stockholm,
Sweden

www.demcon.se

BAUMA CHINA 2022

26-29 Nov, 2024
Shanghai Exhibition Center,
Shanghai, China

www.bauma-china.com

BAUMA CONEXPO INDIA

11-14 Dec, 2024
India Expo Centre, Greater Noida,
New Delhi, India

www.bcindia.com

Relief aid for earthquake damage in Turkey and Syria



Komatsu Ltd. (president and CEO Hiroiyuki Ogawa) has expressed its deepest condolences to those who lost their lives in the recent earthquake that occurred in south

eastern Turkey. Komatsu also extends its deepest sympathies to all those affected by the earthquake. In cooperation with its local distributor Marubeni Dagitim ve Servis A.S. (hereinafter MDS), a wholly owned subsidiary of Marubeni Corporation, Komatsu will lend construction equipment needed for relief efforts to the affected areas free of charge and dispatch operators and service mechanics to assist the relief efforts. This should amount to €140,000. Komatsu will also donate €70,000 through the Japanese Red Cross Society.

Since establishing an office in Turkey in 1975, Komatsu has been engaging through its locally anchored business in Turkey, a major market in the Middle East region. Komatsu will continue to provide material assistance to help the affected areas recover as quickly as possible while monitoring the conditions with MDS.



Hyundai Doosan Infracore reveals new 'Develon' brand for its construction equipment

Incorporating the message to 'move onwards to the future with innovation', an online brand showcase is to be held in February, with equipment with the new Develon brand name to be revealed at ConExpo/ConAgg in March.

Hyundai Doosan Infracore (HDI) is replacing the Doosan brand on its construction equipment and introducing its new Develon brand named. The change takes place a year and a half since August 2021 when HDI became a subsidiary of HD Hyundai. HDI will be changing the brand name on its construction equipment to Develon confirming this as its new global brand identity today, 18 January 2023. Develon is a combination of the words 'develon' and 'onwards'. The new brand name conveys the direction of HDI to move onwards to the future through innovation and its intention to relentlessly change the world with innovative products and solutions.

HDI has planned the launch of the new brand since it became a subsidiary of HD Hyundai in August 2021. It plans to take a leap

forward to becoming a global top tier player in the construction equipment industry with the launch of the new brand. With the change of the brand name, the new Develon decal will be used on HDI's construction equipment.

"Our three construction equipment businesses have already solidified their status as one of the key business pillars of HD Hyundai and have built an unwavering foundation for achieving performance targets and creating synergistic effects among them, amid the rapidly changing global economic environment," said Cho Young-cheul, CEO of HDI. He added, "Develon will lead the future market of electrification and automation to spur growth and continue to be a brand of choice for our customers."

HDI plans to introduce a more detailed brand story and vision by releasing a 'New Brand Showcase' through social media by the end of February. It will also unveil equipment with the new brand name Develon at ConExpo/ConAgg 2023, which will be held in Las Vegas in the US this coming March.



Erkat moves into a new production facility with 60% more space

Drum cutter equipment manufacturer Erkat has moved into a new production facility. The new plant is located in the Thuringian town of Dermbach, Germany, just 4km from the old site. Erkat is part of the Epiroc Group and will significantly expand its production area for drum cutters at the new plant.

"We have a unique opportunity to expand our portfolio and help shape the future of Epiroc with our strong team," explains Martina Schierholz, general manager of Erkat. "The innovative power and agility of our team is an important location factor, so moving to another country was out of the question. Our location is and will remain in Thuringia, for products made in Germany."

"Erkat's drum cutting technology will play an important role in Epiroc's future," says Torsten Ahr, vice president of marketing for hydraulic attachments at Epiroc. "The products from Thuringia are marketed under both Erkat and the Epiroc brands. At the new site, we want to further optimise our production and continuously work on improving our portfolio. And we want to develop new products that are tailored precisely to the future challenges of our customers. That's what the Erkat team is known for worldwide."

The team celebrated its last major success not long ago: with the help of the Erkat engineers, the company became the first manufacturer to succeed in creating a 'V' shaped drum cutter that it says revolutionises trench construction and delivers optimal results in many other application areas. A VC 2000 cutter will also be on display at the upcoming ConExpo/ConAgg exhibition in Las Vegas in March 2023. The innovation will be showcased at the Epiroc stand in hall C, booth no. 31348.

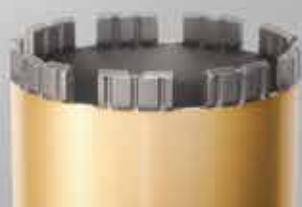
MEISTERWERK.



Wall saw EDIA Crown



Wall saw EDIA turbo



TURBO WET



EDIA DRY



EDIA WET

HSD
PROFESSIONAL DIAMOND SOLUTION

HSD Europe GmbH

- ADDRESS : Mergenthalerallee 77, 65760 Eschborn, Germany
- TEL : +49 (0) 6196 96 79 00 · FAX : +49 (0) 6196 96 79 015
- E-MAIL : info@hsdeu.com
- WWW.HSDEU.COM



SCAN ME



Hitachi congratulates Scai on 20 years as Italian dealer

Hitachi Construction Machinery (Europe) NV is commemorating the 20th anniversary of its cooperation with Scai, the long standing authorised Hitachi dealer in the Italian market. The two companies are celebrating their ongoing successful partnership in 2023, as well as looking forward to how they can build upon the strong base they have established together for future development.

Scai is one of the longest standing members of the Hitachi dealer network, with a relationship dating back to 1983, when it represented the Japanese brand in Umbria, Tuscany, Lazio, and Sardinia. In 2003, when Hitachi made a 49% investment in the company, Scai expanded its sales territories throughout Italy. Further expansion in 2006 covered Malta, Albania, Slovenia, Croatia, Bosnia and Herzegovina, Serbia, Macedonia, and Montenegro. Commenting in 2007, then Scai president Ernesto Cesaretti said: "We decided to form a partnership with Hitachi because we were sure that their products would be the best."

Scai is based in Perugia, with seven branches, 45 workshops, 27 rental points and 140 employees. Following an expansion of the Italian network in 2020, Scai continues to provide high levels of service to customers in Lombardy, as well as central and southern regions. A strong customer oriented approach has been key to Scai's success ever since the company was founded in 1945. Established in Assisi by the Cesaretti brothers, it started in agricultural machinery manufacturing, and

specialised in the conversion of vehicles used in WWII.

The 20th anniversary of Scai and Hitachi's cooperation follows the 50th anniversary of Hcme last year. The long history of both companies has made for a successful long term partnership. "Our companies are two professionals, united in customer satisfaction: Hitachi for the product and Scai for the organisation of local services," says Elisa Cesaretti, Scai's marketing communications manager. "Together with Hitachi, we have managed over the years to become the market leader of the Italian market."

Hcme president Takaharu Ikeda says: "We wish to congratulate our loyal partner Scai in reaching this special milestone. We are proud of their achievements in the Italian market, most recently winning the Hcme 'Rent2Rent' award for growing the Hitachi Premium Rental programme within and outside of Italy in 2022. We greatly appreciate their support and cooperation over the years, and we look forward to many more years to come."

Hilti and IMD launch scholarship programme

A new scholarship programme aims to attract more MBA applicants with a background in science, technology, engineering and maths (STEM) and the ambition to pursue a leadership role in STEM professions.

Hilti, a leading construction industry company providing innovative tools, fastening systems, software, and other services, and the International Institute of Management Development (IMD) are strengthening their partnership through the newly launched Hilti IMD MBA Scholars Programme. Hilti and the Hilti Family Foundation Liechtenstein have pledged €3.2M to establish the Hilti MBA Scholars Program fund, which would make up to €302,000 in scholarship funding available annually over ten years. The objective is to support 60 Hilti MBA scholars over the period by covering 50% of their tuition expenses.

Successful candidates are required to have an academic background and a passion for STEM subjects. They need to convince IMD of their ambition and ability to use their education to pursue a leadership role in STEM professions. "A competitive MBA scholars programme aims to support the brightest MBA candidates from around the world," said Jahangir Doongaji, Hilti CEO. "The new Hilti IMD MBA Scholars Program also aims

to nurture talent and encourage new voices, views, and perspectives to pursue leadership roles in STEM industries," continued Doongaji.

The construction industry company and the business school have worked together for many decades to develop customised educational programmes and research projects. In 2000, Hilti provided funding to establish the Martin Hilti Professorship in Marketing & Change Management at IMD. Since then, the Hilti Chair, held by Professor Seán Meehan, has been closely linked to IMD's MBA programme. MBA graduates have worked with Hilti for decades as part of their consulting assignments, and many IMD graduates have become Hilti employees.

To further strengthen the connection between Hilti and the MBA programme, the new Hilti Chair will be filled by the Dean of the MBA programme at IMD. "It will put Hilti at the heart of the MBA programme by creating a highly visible, direct, and permanent link," said Professor Omar Toulon, current Dean of the MBA programme.



Senya Micro Plant, mobile crushers now made in USA

Senya Crushers in North Carolina, USA is reporting that they have moved their overseas Micro Crusher and Micro Plant to Raleigh, North Carolina making them a completely made in USA units. The move has allowed them to make some important upgrades to the Micro Crusher lineup.

"The move will give us a greatly increased production capacity as we continue to have tremendous growth. It will also give us expanded service capacity as we will now inventory every single component that goes into our machines, giving immediate parts shipment and delivery", says a Senya founder and president Sun Jui.

Along with the move Senya have made a substantial commitment to carrying more inventory in their Micro Crusher lineup with the goal of always having the Micro Plant machinery in stock all the time. In the event that the company's

growth exceeds its production, it will now only be a few short weeks to get back in stock versus earlier with months of sea cargo shipments.

"Senya Crushers continues to push the envelope as the world leader as we pioneer the Micro Crushing category in aggregate processing engineering only the most cutting-edge technology in the business. There is simply nothing in the world even close to the crushing power, portability, production and reduction rates, durability, convenience, efficiency, longevity, and last but definitely

not least, profitability of our machines", Sun Jui comments.

"Call or come see us to see it all in person and we'll show you our trademark, the Southern hospitality in line with the quality and service behind Senya Crushers. We'd love to show you how to revolutionize your business in the best way, making more money", Sun Jui adds. A MADE IN USA upgrades page and video can be found on Senya's news page: <https://senyacrushers.com/senya-crushers-made-in-usa-benefits-video/>

[www.senyacrushers.com](https://senyacrushers.com)





ISO 9001:2008
DIN EN ISO
14001:2009
Management
System
www.tuv.com
ID 0091004797



COLLABORATION

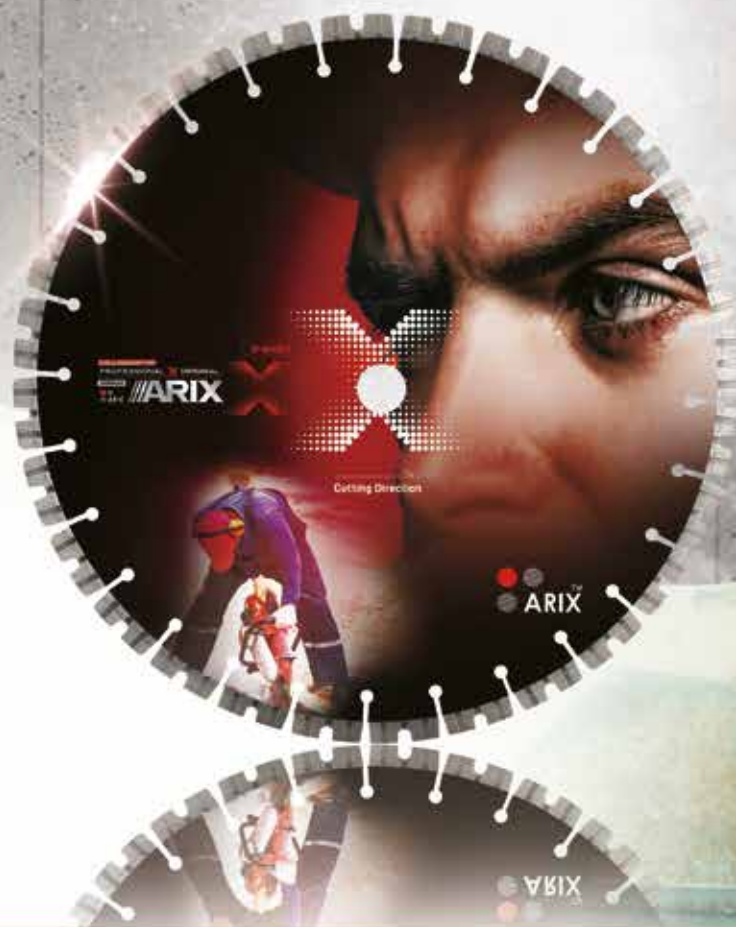
PROFESSIONAL X ORIGINAL

10 SERIES

SHINHAN



ARIX



**SHINHAN
DIAMOND**

Masterpiece
beyond Technology

HEAD OFFICE (Republic Of Korea)

21635, [36B-10L, Namdong Induspark] 375 Namdongdong-ro, Namdong-gu, Incheon,
Republic of Korea

T. +82-1600-4804 | F. +82-32-3414 | en.shinhandia.co.kr



www.arixshinhan.com



WHAT'S NEW IN FULLY AUTOMATIC

QUICK COUPLING SYSTEMS?

Here's the latest news in terms of fully automatic quick coupling systems for hydraulic excavator attachments.

Efficiency, safety and the environment continue to be the major focus when it comes to handling demolition materials. Since the first quick coupling systems for hydraulic tools were launched in the early 1990s, the working day has been revolutionised for the machine contractor, with demolition contractors being fast to adopt quick connect systems. In Europe, for example, you can hardly find a demolition

contractor who does not use hydraulic quick couplings to efficiently change their tools on the jobsite without having to leave the cab. As usual, PDi presents the latest news in this sector in its first issue of the year.

Arden Equipment

For a few years now, Arden Equipment has been very active in developing and manufacturing different types

of quick couplers for a range of different applications. Arden has released the QA H Series 3 which has been designed specifically to increase the safety of the operator and others in the workplace. The Arden quick hitch system - 'QA' - enables and simplifies the quick change of different attachments on a hydraulic excavator. These self-locking quick couplers fit all excavators from 0.8t to 12t and meet all current safety standards, with the QA05H and QA Series 3 being equipped with a safety pad on the front axle.

Arden says that advantages of its system are the dimensions and its compactness. It is compatible with reversible buckets and is equipped with lifting eyes. In terms of safety on the hydraulic QA coupler, the safety paddle serves as a locking indicator. Quick Arden (QA)



Series 3 are also available with different options including integrated tongue hooks. The QA 05 H has a single effect hydraulic line and QA 13 H to QA 23 H has a double acting hydraulic line

OilQuick

The manufacturer that the industry historically associates with hydraulic quick coupling systems is, of course, OilQuick. The company continues to impress and holds the market in an iron grip continuing to launch innovations. In 2022, it launched five developments that improve work for contractors working in demolition, recycling and scrap handling. Some of its developments are featured below.

New OQTR-E09 tilt rotator

With the new OQTR-E09, the smallest in OilQuick's range, the manufacturer covers tilt rotators for excavators ranging from 6t to 33t. OilQuick tilt rotators are said to automatically increase flexibility and efficiency. With the OQTR-E09 tilt rotator equipped with OilQuick 'sandwich' solution, the operator can tilt, rotate, and change the tilt rotator to a bucket or other hydraulic,



electrical or mechanical attachments under the tilt. This provides improved digging capacity, breaking force and function, and aims to ensure that the right attachment is used. The new tilt rotator is prepared for an OilQuick OQ45 quick coupler system and is designed to be ideal for smaller machines.

The new 17 pin electrical connector

The increased demands on electrical cable glands in connection with proportionally controlled control systems for tilt rotators, machine control systems and other electrical functions have meant that, in many cases, two 10 pole electrical connections must be used. OilQuick's new V90/17 with a total of 17 poles can handle all this with just one electrical connector. The electrical connector can be retrofitted to older 'OQ' couplers and attachment sections. V90/17 is a robust 17 pole vertically connected electrical connector especially developed for use with OilQuick's fully automatic quick couplers



and attachment sections. This replaces the previous 10 pole V90 connector.

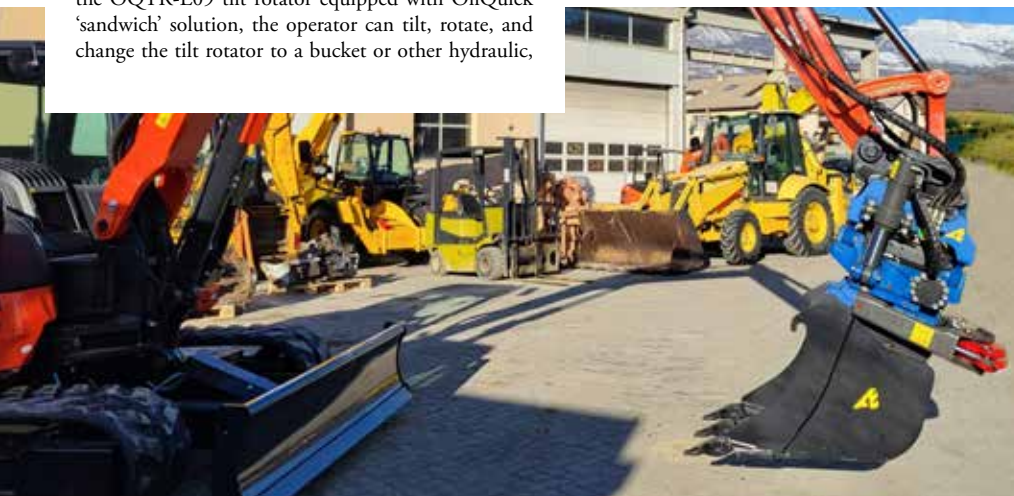
The connection is stable and secure due to the homogeneous pins in the female coupling providing safe contact and function, being particularly suitable for CANbus traffic with weaker control currents. The pins have a larger contact surface and stronger springs provide increased contact. There are also two CANbus channels through the electrical connection that ensure that the control traffic to the tilt rotator can be kept separate from external CANbus traffic with machine control systems etc.

Other advantages are that V90/17 can withstand higher current strengths - 5A per pole and a total of 30A across the entire connector. The electrical connection is sealed against humidity and moisture when connected, and there are also fixed coupling holders on the attachment side which means there is no more need for the addition of shims in the male connector. The male part is available with connectors suitable for all machine control systems such as Leica, Trimble and Topcon etc.

OilQuick Americas starts US production during 2022

OilQuick USA, an Exodus Global company, and OilQuick AB announced a joint venture to manufacture OilQuick's automatic quick coupler systems on site in the USA. The new company is named OilQuick Americas, (OQ Americas) and will serve both the North and South American markets. OQ Americas is currently investing in new premises and state of the art manufacturing in Superior, Wisconsin. "This joint venture increases our manufacturing capacity significantly to meet the exponential growth in demand. After working with Åke and Henrik Sonerud for six years, it was an easy decision to go into this exciting project. Their attitude to business, commitment to quality and the respect they show their employees and customers fit perfectly with Exodus Global," says Exodus Global CEO Kevin Boreen.

"The team at Exodus Global is a perfect match for us, having the very same view of business, quality, and support for our customers. We are very happy to start this new journey with them. This is also a necessary step for us in our global expansion, by doing this we release capacity for our growth in Europe and Asia, but more importantly we improve support for our customers in North America by shortening delivery times and increasing flexibility," says OilQuick CEO Henrik Sonerud.





"The market for automatic quick couplings in North America is accelerating every day. This investment gives OQ Americas the unique ability to serve our customers with local manufacturing on the North American continent. With +45,000 quick coupler systems installed worldwide, no competitor comes even close to the reliability of OilQuick's products," adds Boreen. Production in Wisconsin, USA will be up and running by the beginning of 2023.

Sweden's Best Industry – third year in a row for OilQuick

Worthy of note is the fact that for the third year in a row, OilQuick has been named Sweden's Best Industry. And for the fourth year in a row, OilQuick manages to get on the list of Sweden's 25 Best Workplaces in the medium sized companies 50-250 employees class. That OilQuick, which is an industrial company, is included in this list is unusual. Other positions on the list are dominated by consulting companies. The awards are presented by the organisation Great Place To Work, which carries out the world's largest workplace study

and awards quality awards to the very best in more than 50 countries worldwide.

Success at bauma 2022

At the end of October 2022, bauma Munich was finally held having being postponed due to Covid. For OilQuick it was a big success. OilQuick focused promoting its tilt rotator series and the response from stand visitors was said to be 'amazing'. In addition to what was displayed at its stand, 280 OilQuick quick couplers were mounted on different machines around the show.

More news to come in 2023

During 2023 OilQuick will release its largest suspended quick coupler, OQC90. There will be more on this at a later date. In addition, an updated touch display and interface for 'OQLS' will be released in 2023. This is an advanced, user friendly electronical driver support for safe and secure attachment switching on excavators. Also in 2023, OilQuick will release a new slim touchscreen and a new digital interface. This simplifies managing attachment swaps when using a tilt rotator,

which enables the operator to control both machine and tilt couplings from the same display. OQLS has been designed to be user friendly and offers a clear coupling process via the intuitive touch display. There is a sensor detection of attachment pins and locking plungers. It provides an automatic activation of the machine's hydraulics and fulfils all safety requirements on the market. Besides this, OilQuick promise that there will be more news later on in 2023.

www.oilquick.com

Steelwrist's and Rototilt's Open-S standard

Today there are quite a number of manufacturers of quick coupling systems, but Sweden should still be considered the Mecca for such equipment, with OilQuick, Rototilt, Steelwrist and Engcon, all being from Sweden. Steelwrist and Rototilt have a close working relationship and this resulted in the Open-S alliance, which received the Innovation Award at the Swedish Demolition Awards Ceremony in November last year. The idea with the Open-S alliance is to strive to give machine operators and contractors around the world the freedom to combine

Lehnhoff's SQ80 fully hydraulic quickcoupler pay off

By: Jörg Liebig

Quickcouplers have become indispensable on modern construction sites, transforming every excavator into a Swiss army knife. The fully hydraulic SQ quickcouplers from Lehnhoff go one step further. They combine flexible use with a great performance.

For its excavator fleet, the construction company Van Loo Projects from Westmeerbeek invested in SQ80 quick couplers from the Belgian Lehnhoff dealer Steven Van Roy Bv. After all, the company, which is active in earthworks, road construction and, above all, demolition, relies above all on quality and efficiency in its work. Van Loo had its excavators uniformly equipped to the SQ80 size. Both on the CAT335 with short arm and on the CAT395 high-reach excavator. This means that all attachments can be used with each other.

With the SQ system, the demolition specialists of Van Loo Projects quickly switch between concrete shears and sorting grabs, as well as all hydraulic attachments and buckets, without leaving the cabin. In this way, the demolition of old buildings progresses without

long interruptions, no matter which tool is needed at the moment.

Symmetry makes the difference

Based on the open S industry standard, the Lehnhoff SQ quick couplers are completely symmetrical. The pick-up shafts, including the valve block, can be rotated by 180°. This means that even swing buckets and crusher buckets can be picked up in high bucket mode and operated hydraulically.

This flexibility is by no means at the expense of performance. With up to 550 litres per minute, the SQ quick couplers from Lehnhoff offer the highest oil flow of all symmetrical couplers available. Even their hydraulic hammer can be operated by the demolition

specialists from Van Loo Projects with the lowest pressure loss.

Particularly low maintenance

Customers who have opted for Lehnhoff SQ quick couplers are particularly impressed by the ease of maintenance. "The pressureless unit in the valve block alone reduces the installation effort enormously," explains David Bodvin, Sales Manager at Steven Van Roy. If necessary, either the O-rings or the entire short-stroke valves installed in the valve block can be replaced in a few minutes. With the special tool, this can be done directly on site. "This is really practical and prevents the excavator from breaking down completely that day," confirms David Bodvin.

www.lehnhoff.de



In demolition, the Lehnhoff SQ80 shows its strengths.

WE HAVE WE HAVE DEMOLISHED OUR OUR LIMITS.

WWW.TREVIBENNE.IT

We never hesitated when it was time to bet on ourselves.
And we did it to go further.

*Trevi Benne: **unstoppable**, for 30 years.*



TH Visit us at:



Scan the QR code to learn more about our history.

quick couplers, tilt rotators and work tools from different manufacturers that follow the standard. With a common standard it is easier for industry manufacturers to continue competing with performance and functionality, and still offer customers' compatibility. The standard also means that dealers can provide clearer information about which products fit together. Steelwrist's fully automatic 'SQ' quick coupler and Rototilt's 'QuickChange' systems are designed to be able to connect to other brands following the Open-S standard.

Steelwrist

In May last year Steelwrist launched the new range of SQ50 quick couplers and tilt rotators. The new range is

targeted toward 7t to 13t excavators. Steelwrist 'SQ' is used in quick couplers and tilt rotators on excavators to connect hydraulic work tools. The company says that it provides outstanding flow characteristics and meets the specifications of the Open-S standard for fully automatic quick couplers.

The SQ50 quick couplers and tilt rotators were shown at the Vei and Anlegg fair in Norway on 11-14 May, 2022. The SQ50 will be phased in on X12 and X14 tilt rotators which means that future S-type quick couplers and tilt rotators will be upgradeable to SQ type.

S50 and SQ50 quick couplers are steel cast and have the Steel wrist 'Front Pin Lock' safety solution.



A job needs a work tool, and a work tool needs an excavator - not the other way around

By: Karl Serneberg, Steelwrist

Karl Serneberg is VP sales & marketing at Steelwrist and shares his more than 20 years of experience. He previously worked for Volvo Construction Equipment as marketing director for the EMEA sales region and director for Volvo Construction Equipment's Global Attachment business. Today he is responsible for developing relationships and sales with major excavator OEM's as well as Steelwrist's marketing.

"A job needs a work tool, and a work tool needs an excavator - not the other way around. That's the starting point when we think about how to increase your excavator efficiency," says Serneberg. "Let's focus on quick couplers. What is first and foremost crucial with a quick coupler is that you can change the work tool in a safe manner. With the demand for productivity constantly rising and in many applications the need for quick change of work tool is almost continuous means the importance of quick couplers is just increasing.

"All Steelwrist quick couplers are based on the S-Type (symmetrical) standard. There are many reasons for this, but the compact design, light weight and robustness of the S-type couplers are reasons for this. Add the fact that it is based on an open standard," says Serneberg. He continues: "That compared to called 'pin-grabber' there is no risk of picking up a work tool which is not designed for the specific coupler, which leads to increased safety. Add to this that the total height of the S-Type coupler is significantly lower than the pin-grabber.

"During the last years we can see that the requirement to be able to change hydraulic powered work

tools without leaving the cab is increasing. This is why the demand for fully automatic quick couplers is increasing fast. With Steelwrist SQ technology you can change between hydraulic powered work tools such as breaker, crusher, shear, and grapple as well as mechanical work tools in only seconds – all without leaving the cabin."

Serneberg continues: "Steelwrist 'Qplus' is the label they have put on all the improvements Steelwrist has developed compared to competitor solutions. Higher flow, more uptime and improved serviceability are the main benefits for the operator. With Steelwrist Qplus the flow area measures up to 37% more compared to competitor products (depending on coupling size). Steelwrist Qplus sealing technology is completely new and significantly more durable compared to competitor products. This will give you more hours in operation before sealings have to be changed. Changing seals in Steelwrist Qplus couplings is done fast and easy without need for proprietary and complicated tools."

Serneberg believes strongly in open standard interfaces and states that the Steelwrist SQ system is designed to be able to connect with other brands using the same type of oil connection systems, the Open-S standard. "With an open standard for quick couplers, machine operators and contractors can more easily choose quick couplers, tilt rotators and work tools from different manufacturers, and be confident that they will function together," concludes Serneberg.

<https://steelwrist.com/int/products/quick-couplers/>

This is a mechanical lock of the front shaft which significantly limits the risk of an unintended drop of work tools. The X12 and X14 tilt rotators are redesigned with a new top and attachment coupler in order to make it possible to upgrade from S50 to SQ50 at a later stage, even if the customer did not include SQ in the initial order.

An SQ on the top side (upper coupler) of the tilt rotator for rapid change between tilt rotator and other work tools, and SQ on the bottom side (attachment coupler) of the tilt rotator will allow for rapid change between hydraulic work tools. By using SQ, tilt rotator work tools can be made less expensive as the rotation function is included in the tilt rotator. "With the introduction of SQ50 fully automatic quick couplers and tilt rotators, we will change the game in the growing 10t excavator segment with flow capacities of 120l/min with low back pressure. This allows for efficient use of high flow work tools also for mid-size excavators," says Stefan Stockhaus, CEO of Steelwrist AB.

High flow hydraulics and rotation sensor

With the introduction of SQ50, 'Qplus' technology has been updated to allow for even higher flows, reportedly adding another 20% to flow capacity which allows users to run the high flow for work tools on mid-size excavators. With the introduction of SQ50, Steelwrist during 2022 also introduced a new 'Absolute Rotation Sensor' in order to give higher accuracy to machine control systems. In October 2021 Steelwrist added SQ90 to the range of automatic quick couplers, something that already been covered in PDi.

www.steelwrist.com

Rototilt

Rototilt did not launch any new quick coupler models during 2022, but there is other news. Rototilt has launched the new 'Rototilt Control' product concept at bauma in Munich, promising better operability, improved energy efficiency and new technology in a cohesive system. The company has kept one of its new products under the radar to date, but the details of the new RC joysticks have now been revealed. "RC Joysticks have been designed to meet our high standards as regards function and quality. We consider it only natural to be able to deliver a complete system of tilt rotators and control systems from the same manufacturer, to satisfy the industry's high demands in respect of safety and CE marking," says Caroline Jonsson, product manager.

Through field tests involving both male and female machine operators, as well as close collaboration with leading product designers in this area, Rototilt's objective has been to develop handles that are suitable for a wide range of hand sizes without compromising on fit. Thanks to a digital keypad, they also provide scope for future adaptations in relation to the machine. According to Caroline, the things that users will notice most clearly are the patented angle adjustment and the palm rest.

Rototilt has also now inaugurated its newly built distribution centre in Rosersberg, strategically located outside Arlanda Airport, north of Stockholm. The investment means shorter lead times, greater flexibility and availability. Orders placed at 4pm can be delivered the next day in the Nordics. "This is a long term investment in our aftermarket that is about offering the best possible service to our customers. We know how important it is to be able to keep our machines running," says Jan Karlsson, aftermarket manager.

And that is about it in terms of news from the global fully automatic quick coupler sector for this time.

Pentruder



EQUIPMENT BUILT TO LAST

All Pentruder products are made in Sweden with pride and precision. We produce precision parts in-house, from the best materials, in state of the art production machines. With over 35 years of experience from designing concrete cutting equipment, we know how to build high performance, durable systems. The Pentruder equipment is only sold by our authorized Pentruder distributors world wide.

Find out more on: www.pentruder.com

Pentruder[®]
CONCRETE CUTTING SYSTEMS

Designed and manufactured by:
Tractive AB | Gjutargatan 54 | 78170 Borlänge | Sweden
Tel: +46 (0)243 221155 | E-mail: contact@pentruder.com
www.pentruder.com





THE RIGHT TOOL FOR THE JOB

Three new special application machines have been developed by Hitachi to maximise efficiency, uptime and safety on heavy duty and demolition projects. The ZX390TC-7 tool carrier model has been specially adapted to work with larger working tools, and can be used for secondary demolition works. The two multi carrier models – ZX400MC-7 and ZX600MC-7 – are supplied with up to four front equipment options and are built to meet the requirements of demolition projects. They can complete the tasks of several machines on site, which simplifies planning, and minimises transport and personnel costs. They are also designed to improve performance and safety for operators.

Based on standard Hitachi 'Zaxis-7' models, with Zaxis-7 technology and Stage V compliant engines, they were developed with Kenki Technology Group GmbH (Kteg). "The launch of these models shows how Hitachi is addressing the specific requirements of certain industries," says Burkhard Janssen, European Department Head Special Applications and New Technologies at Hitachi Construction Machinery (Europe) NV. "We are constantly listening to the needs of our customers, particularly regarding improvements to productivity and efficiency on site."

Thanks to a larger boom and bucket cylinders, and a one class higher reinforced linkage, the ZX390TC-7 can carry 5t of working tools, such as hydraulic shears for crushing that would normally be used by larger machines. It is equipped with a full hydraulic control system, suitable for use with all working tools, which can be changed within seconds from the operator's seat.

For added stability, the ZX390TC-7 has a robust 25cm longer undercarriage than the standard ZX350LC-7, and is supplied with an additional 1.4t counterweight. To ensure the safety of operators, the machine has side impact protection and a demolition spec. cab with FOPS guard level 2, front window protection and high spec. P5A safety glass. Safety is also enhanced by what Hitachi says is the exceptional visibility from the cab, particularly from the 270° bird's eye view provided by the 'Aerial Angle' camera system.

Enhancing efficiency on every demolition site

Sharing some of the features of the ZX390TC-7, the larger ZX400MC-7 and ZX600MC-7 multi carrier models have been designed to meet the requirements on all types of demolition projects. They are each supplied with up to four front equipment options, including a mono boom and two piece boom. The ZX400MC-7 can be equipped with a high reach demolition front of 21m or 24m, while the ZX600MC-7 can be equipped with a high reach demolition front of 26m or 30m, and a telescopic boom enabling a high reach of 34m. They have been developed to boost profits for owners by enhancing efficiency on every project. Like the ZX390TC-7, they are equipped with a full hydraulic control system, suitable for use with all hydraulic attachments.

Both the boom and the working tool can be changed quickly and conveniently from the operator's seat thanks to Hitachi's 'Boom Quick Connect' and 'Tool Quick Connect' technology. This unique and award winning feature allows the front equipment to be

changed within two minutes by one person (instead of 90 minutes and two people using a conventional type of boom change system), saving time on the job site. Having the flexibility to choose between booms enables operators to work with the optimum attachment for the job, ensuring a better performance. The triple boom raise cylinders, extendable undercarriage for 360° working, and a longer track frame, also enhance the versatility of both machines.

Prioritising safety

The especially reinforced demolition cab has been designed to be equipped with features to keep operators safe while carrying out demolition work in challenging environments. The FOPS level 2 and front window protection, plus P5A glass, for example, are designed to help protect the operator from falling debris. The operator has excellent visibility thanks to the tilting cab on the 'MC-type' machines (tilting the cab to an angle of 30° degrees). Camera systems show multiple views from the cab, including of the attachment, side and rear of the machine, and a 270° view of the surrounding environment.

Safe working and stability are said by Hitachi to be ensured by the load moment indicator and alarm system, with the machines being also equipped with an extendable undercarriage and additional counterweight. "We are delighted to introduce this new model to the European market," says Burkhard Janssen. "We believe they will help to save our customers time and money, and significantly improve machine performance and safety for operators."

SINCE 1973

**We've demolished
every obstacle,
shattered all doubts,
built our success.**



VTN Anniversary



vtneurope.com



Tana North America and Humdinger Equipment at ConExpo/ConAgg

From the 14-18 March, 2023, Tana North America and Humdinger Equipment will be exhibiting at the ConExpo/ConAgg 2023 international exhibition in Las Vegas to showcase its company brand and products to a global audience. ConExpo/ConAgg is the international gathering place every three years for the construction industries, with the event featuring exhibits of the latest technologies, equipment, products and services plus providing industry targeted education.

Unique versatility

The Tana 'Shark' 440DTeco is the company's most versatile mobile waste shredder with excellent capacity and productivity. The Shark shredders have multiple unique features designed to deliver excellent performance levels with better fuel efficiency and lower machine operating costs, being highly robust machines that have been built to last and maximise uptime.

Cost effective machine chain for recycling waste

Tana shredders and the Tana disc screen have been developed to form an ideal machine chain, as they can process the same waste types at the same speed. With the disc screen's modular screening deck design, the machine can be easily configured for two or three fraction screening based on the customer's needs. With the Tana disc screen, the screening process can be easily optimised based on materials, feeding methods and process requirements.

Reduce costs and increase efficiency

Humdinger pull scrapers have a proven track record in a variety of construction, mining, and agricultural applications when compared against traditional self-propelled systems. Tana North America and Humdinger Equipment will be at Booth S5473 in the Silver Lot. The companies invite interested parties to come and meet the experts and discuss the latest topics in waste management.

www.tananorthamerica.com

DRUM CUTTER IMPRESSES IN ROCK

The VC 2000 drum cutter is said by Epiroc to take demolition and digging to the next level. Thanks to the arrangement of its cutting heads in a 'V' formation, it is designed to achieve high levels of performance for higher efficiency, cost effectiveness and operator safety, the environment and carriers.

The VC 2000 mastered its work during the removal of rock for a retention basin by the A45 near Siegen-Süd with flying colours, impressing both of the main partners - Straßen- und Tiefbau GmbH Kirchhundem and Epiroc authorised dealer maschinen + technik Sauerland - with its impressive functionality and user friendliness.

Precision and robustness

Removing rock for the rainwater retention basin at the summit of the A45 motorway in mountainous Siegen was a sensitive task. The building authorities specified that the slope needed to be secured by a retaining wall. There was rock material on the front of this surface that had to be removed with a high degree of precision and finesse to ensure that the wall, built from concrete piles, was not damaged. A drum cutter was needed that could cope with the hardness of the rock and work reliably in the confined space. The VC 2000 from Epiroc had been tested on various 20t-40t excavators beforehand, and met the complex requirements perfectly. It ensured that removal was quick and effortless, and that the construction work could be completed successfully within around two weeks.

The customer was delighted with the effective and above all efficient construction process being impressed by the performance of the low vibration and low maintenance drum cutter. As the organisation responsible for the construction project, the established company from Kirchhundem brought expertise and an understanding of the latest technologies to the project. An additional factor was the local environment that needed to be protected. Prior to use, the modern drum cutter was quickly re-oiled with the fully compatible Panolin bio-hydraulic oil, which is biodegradable and does not pollute soil or rock. In general, the company operates its fleet of excavators and attachments with a fully hydraulic OilQuick quick coupling system and with Panolin bio-hydraulic oil.

Well thought out design

Epiroc states that the VC 2000 is summed up as simple change with great impact. It has been designed to combine simplicity with exceptional leverage and outstanding performance. It all starts with the fact that using the new drum cutter saves time and money and reduces energy use by up to 40%. Because of its special design, it allows flat surfaces to be created without material accumulating between the drums as is usually the case. In other words, the material is completely removed in the middle of the drum cutter due to the inclined cutting heads thanks to the patent pending technology without the need for swivelling. This removes the need for the zigzag course enabling digging to take place faster and

much more accurately than before. The VC 2000 can simply be moved straight ahead like a shovel or trench bucket on conventional equipment, making it more efficient and easier to get from A to B.

The drum cutter can still be used as a swivelling cutter for removing surface material like a conventional transverse drum cutter. A further advantage of the V technology becomes apparent during regular digging for supply lines. For example, the drum cutter can simply work like a trench bucket facing the excavator, producing deep, vertical trenches in rock and concrete. It also works underwater and can be used up to a depth of 30m without additional installation or modification.

Versatile applications plus additional innovation

The innovative VC 2000 is ideal for profiling hard surfaces such as rock or concrete walls in particular, but also for excavating frozen soil, soft rock in quarries and general demolition work. In addition to its robust housing design developed for increased operating time, and a durable drive shaft bearing with a maintenance free mechanical seal system, it also includes an adaptable gear motor with high torque for greater productivity and longer motor service life. Stable gears for optimal power transmission are designed to deliver complete reliability. The new drum cutter also offers intuitive user friendliness and protection of the carrier. This, in turn, leads to reduced downtime and maintenance, making the VC 2000 a worthwhile long term investment.

The VC 2000 is launched together with the sturdy 'Pro Bracket' console, which is particularly advantageous during digging and with fully hydraulic changers. The hydraulic hoses are routed into the adapter plate at the rear in the centre of the drum cutter extension arm so that they are effectively protected against the ingress of material and dust and are subjected to less mechanical stress.



Sort it out on-site.



United. Inspired.

Sort and separate rocks, crushed concrete and recycling material with speed and precision using our high-performance Bucket Screeners.

epiroc.com



 **Epiroc**



CONEXPO-CON/AGG 2023

Conexpo-Con/Agg is set to be the organiser's biggest show ever. It will be held from 14-18 March, 2023, in Las Vegas, with the Covid pandemic having created a pent-up need to meet again.

ConExpo-Con/Agg 2023, is already recognised as the largest trade show in North America, and has officially sold all its available exhibition space, ensuring the 2023 edition of the show will be the biggest in history. Up to this point, 2,452 companies are set to exhibit.

More exhibition space

"The addition of the new West Hall and Diamond Lot at the Las Vegas Convention Center gave us, and our exhibitors, a number of new opportunities to show how we are taking the construction industry to the next level," said ConExpo-Con/Agg 2023 show director Dana Wuesthoff. "Now at 260,128m² of exhibits, there's more for construction pros to see than ever before." The show, now nearly 5% bigger than the record set in 2020, will feature 1,800 exhibitors and 150 education sessions during its run from 14-18 March, 2023.

Despite being the largest ConExpo-Con/Agg 2023 ever, recent additions to the Las Vegas Convention Center (LVCC) will make it the easiest to get around as well. Beneath the entire LVCC campus runs the Convention

Center Loop, an underground transportation system designed by Elon Musk's The Boring Company that transports convention attendees throughout the campus in under two minutes in Tesla vehicles, free of charge.

"We are excited to welcome ConExpo-Con/Agg 2023 back to Las Vegas for another record setting event," said Brian Yost, chief operating officer of the Las Vegas Convention and Visitors Authority (LVCVA), which owns and operates the LVCC. "The addition of the West Hall and the Convention Center Loop will only further enhance the 'Only Vegas' experience for attendees and exhibitors."

Construction pros are ready for the show to return as well. The current pace of attendee registration is nearly double what it was at this time for the 2020 show. "This is the event that construction professionals, especially those making company level decisions, and those needing professional development hours, can't





set to be the biggest show yet



QUICK FACTS

PURPOSE

CONEXPO-CON/AGG is the international gathering place every three years for the construction industries, focusing on construction, aggregates, and ready-mixed concrete. The event features exhibits of the latest technologies and innovations in equipment, products, and services, plus extensive industry-targeted education.

DATES AND LOCATION - NEXT SHOW

Held every three years, the next CONEXPO-CON/AGG is set for March 14-18, 2023, at the Las Vegas Convention Center in Las Vegas, USA. CONEXPO-CON/AGG co-locates with the IFPE exposition for fluid power/motion control/power transmission.

ATTENDEES

CONEXPO-CON/AGG attracts persons involved in

all segments of the construction, aggregates, and ready mixed concrete industries, including contractors, materials producers, and government and institutional sector officials.

EXHIBITS

CONEXPO-CON/AGG exhibits showcase the latest technologies and innovations in equipment, products, and services for the construction industries. Product concentration areas and specialized exhibit pavilions make it easy for visitors to locate specific products, services, and exhibitors of interest.

EDUCATION

CONEXPO-CON/AGG offers a comprehensive education program during the five-day exposition, with seminars emphasizing industry issues and trends, management, and applied technology.

INDUSTRY SUPPORT

Leading industry organizations worldwide participate as Supporting Organizations, and leading industry publications/media worldwide participate as Supporting Publications/Media. CONEXPO-CON/AGG is recognized as a gathering place for the worldwide construction and construction materials industries. Hundreds of industry meetings, including annual conventions of industry associations, are held in conjunction with the show.

SHOW SPONSORS AND PRODUCER

Principal sponsors are Association of Equipment Manufacturers (AEM), National Ready Mixed Concrete Association (NRMCA), and National Stone, Sand & Gravel Association (NSSGA). Show sponsor is Associated General Contractors of America (AGC). AEM is a show producer.



“This is the event that construction professionals, especially those making company level decisions, and those needing professional development hours, can’t miss.”

miss,” said ConExpo-Con/Agg 2023 show chair and Caterpillar senior vice president Phil Kelliher. “Seeing the new equipment and techniques on a screen doesn’t compare to seeing it all in person. At the show, you can see the equipment, ask questions of the manufacturers themselves, and really understand what the equipment and education can do for your career and business.”

Registration for CONEXPO-CON/AGG and IFPE is currently 30% percent off with code: ME-DIA30. Construction and fluid power pros should have received their badges before 6 January, 2023, to get that discount and have a better pick of hotel accommodations.

About ConExpo-Con/Agg 2023

ConExpo-Con/Agg 2023 is the largest construction trade show in North America and the premier event that connects professionals from every major construction sector. Held every three years, ConExpo-Con/

Agg 2023 takes the construction industry to the next level by helping construction professionals elevate their industry expertise, experience the newest equipment



and products through demonstrations and industry leading education, make new professional connections, and grow their own marketability within the industry. The next ConExpo-Con/Agg 2023 will be held 14-18 March, 2023 in Las Vegas, Nevada.

About the Association of Equipment Manufacturers (AEM)

AEM is the North America based international trade group representing off road equipment manufacturers and suppliers with more than 1,000 companies and more than 200 product lines in the agriculture and construction related industry sectors worldwide. The equipment manufacturing industry in the United States supports 2.8M jobs and contributes roughly €271B to the economy every year.

PDi Magazine will of course be there to report about the event.

www.conexpoconagg.com



EIBENSTOCK

**PROFESSIONAL
DIAMOND
TECHNOLOGIES**

Made in Germany

eibenstock.com

www.pdworld.com



**A symbol of quality
products worldwide**



**Inventor
of the
Booster
Technology**
www.npke.eu



All NPK attachments are designed, built and backed by NPK

TS40

Cut-off saw with NEW flush blade guard
For cuts close to the wall

WEKA

Flush set with spacer
and cover plate

With optional dust extraction



More informationen at www.weka-elektrowerkzeuge.de

LISSMAC

CONSTRUCTION TECHNOLOGY

**PROFESSIONAL
CORE DRILLING
PRODUCTS**



LISSMAC Maschinenbau GmbH
www.lissmac.com





SELECTED EXHIBITORS CONEXPO-CON/AGG 2023

EXHIBITOR	EXHIBITOR	EXHIBITOR
ALLU Group Inc	Furukawa Rock Drill USA	OilQuick
AMCAST	Geith International Ltd	Okada America, Inc.
Ammann America Inc.	General Grind & Machine	Quick Attach
Anaconda USA, Inc.	Genesis Attachments	Ramco Steels Pvt. Ltd.
Antraquip Corporation	Geophysical Survey Systems, Inc.	Rammer
Astec Industries, Inc.	GrinderCrusherScreen Inc	REMU USA, Inc
Aquajet Systems	Hidromek A.S.	Rock Tools Attachments, LLC
AUSA US CORP	Hinowa S.p.A.	Rockbreaker Tools
Avant Tecno USA	Hitachi Construction Machinery Americas Inc	Rockster Austria International GmbH
Bell Equipment North America, Inc	Hyundai Construction Equipment Americas	Rockwheel Americas
Bobcat Company North America	IDROMECCANICA ITALIANA	Rototilt Inc.
BossTek	Inan Makina San.Ve Tic. A.S.	RUBBLE MASTER
Brokk Inc	INDECO North America Inc	RubbleCrusher
Brunner & Lay	IROCK Crushers LLC	Sandvik
Buffalo Turbine	ITALMAGNETI SRL	SANY
CAMS AMERICA	Jetstream of Houston	Sennebogen LLC
Canycom USA Inc	John Deere Construction & Forestry Company/Wirtgen	ShearCore
CASE Construction Equipment	Group	SIMEX
CM Labs Simulations Inc.	Kanga Loaders	Sinoboom Intelligent Equipment
CORIMAG SRL	Kinshofer	Soosan Heavy Industries Co., Ltd.
Cormidi USA	KOBELCO Construction Machinery USA	SPRAYSTREAM
Cratos Equipment	Komatsu	Stanley Infrastructure
DAEMO Engineering Co., Ltd.	Komplet America	Steelwrist Inc.
DEVELON / Formerly Doosan Construction Equipment	Kubota Engine America Corporation	Superabrasive, Inc.
Diamond Blade Warehouse	Kubota Tractor Corporation	Takeuchi
Diamond Mowers	Liebherr	Talbert Manufacturing Inc
Diamond Speed Products	Link-Belt Excavators	Teledyne Construction
Diamond Z – Screen Machine	Lippmann	Toku America, Inc.
Dougherty Forestry Mfg.	Magnum Attachments Inc	Trevi Benne SPA
DOZCO (INDIA) PVT. LTD.	Mazio Attachments LLC	V.T.N. EUROPE S.p.A.
Dynaset Oy	MB Crusher America Inc	Volvo Construction Equipment
Eagle Crusher Company Inc	MCS North America, Inc	Wacker Neuson
Element Six	Metso Outotec	Wirtgen Group
Engcon North America	MobyDick	World Diamond Source
Epec Oy	Montabert	Xtreme Manufacturing
EPIROC	Nakayama Iron Works, Ltd.	ZOOMLION
EPPICO RODMAN DRILL	NPK Construction Equipment, Inc.	



HP 1200 hammer and an IHC 75 serving civil construction in Australia

Gavin Negrin of Nugget Haulage PTY. LTD explains why his company uses Indeco breakers.

"Ours is a family business founded by my father in 1994," says Gavin Negrin of Nugget Haulage PTY. LTD. "Initially we dealt with the transport of materials to and from the construction sites with a trailer truck. In 2007, with my entry into the company, we bought the first excavator and started our activity in the housing sector. I currently own two Komatsu excavators: a PC138 and a PC35 that we use to carry out excavation works. Before 2007 I worked several years in the civil construction industry for another company that owned several Indeco hammers and I got to use the HP 3000 model, a fantastic product that could work all day without missing a beat.

"For this reason, when it came time to buy a hammer for my business, I had no hesitation and purchased an HP 1200 that fits my Komatsu PC138 excavator perfectly. The particular design of the housing and the position of the connecting pipes allow you to use the hammer in the cutting, avoiding any damage. Mainly I use the Indeco hammer to carry out drainage excavations or for electrical systems, rock excavations, or boulder reduction.

"I also own an Indeco IHC 75 compactor, a product with an exceptional design and performance that has given me excellent results even in deep cuttings, with a reduced number of passages thanks to its hydraulic power, with a consequent saving of time. Based on the experience accumulated over the years, I would not hesitate to recommend Indeco products, for their efficiency, ease of use and maintenance, as well as for the excellent spare parts supply service," concludes Gavin Negrin.

INDECO TAKES ON A BIG DIG

The section of the Bari-Barletta railway line that crosses Andria city centre is being moved below ground level, a project that involves digging a 3km trench. Indeco hydraulic hammers are taking on the job of excavating the whole 250,000m³.

Lowering the tracks that cross the city of Andria is an important step in the renewal of railway transport in the northern region of Puglia in Southern Italy. The project, commissioned by Fertramviaria S.p.A., the company that oversees 70km+ of the railway line of the Ferrovie del Nord Barese, is part of the more ambitious project to upgrade rail links in the metropolitan area of Barletta, Andria and Trani (BAT province). When finished, the infrastructure is destined to improve mobility within the province since it will facilitate and speed up the public transport system. The project entails the excavation of a trench under the old line of the single track railway of a total length of 2,932.81m which was assigned to the company CMB.

Hard, slightly fractured rock

As per project specifications, the trench must have a depth of between -5m to -11m from the surface level, but at the level of the water collection tanks the depth reaches over -16 m. Arriving at the bottom of the trench means crossing rocky layers with a high rock hardness and density due to a relatively low degree of fracturing (average 50%-75% on the RQD index). In some areas, the grey dolomite comprises of large erratic rocks with high density and hardness that can even exceed a compressive strength of 150MPa. Given the project time frames, the excavation of the nearly 3km trench had to be completed in a 560 day time frame. Due to the site's geological characteristics, engineers also needed a retaining wall to be built for consolidation before the start of excavation.

The presence of nearby roads, and in some points buildings close to the track, called for a solution to counteract the thrusts on the trench walls. The system consists of micro piles, 190mm or 220 mm in diameter, reinforced with HEB beams, and in some points with a row of passive soil nails. In the work sequence, excavation is performed as the retaining system advances, with the wall progressively sprayed with fibre reinforced shotcrete; finally, the excavated trench will be cast with a definitive lining.

Since blasting was impracticable due to the urban setting, CMB initially considered using milling machines and roadheaders. However, given the prevalence of red soils and the uneven stratification of the rock at the base of the trench, this was eliminated as an option. At that point, the decision was made to use hydraulic

hammers, provided they be high powered and in suitable numbers to meet the site requirements.

Calling in the professionals

The size of the excavation involves the removal of over 250,000m³ of material, with the rock hardness requiring a subcontractor with the experience and equipment to manage the works and related logistics. After a careful selection, CMB chose Multiscavi srl based in Andria, which has an extensive fleet and the suitable experience for the job. Sebastiano Liso, manager of the company along with his brother Vincenzo, said of the contract: "A trench of these proportions, and the time allowed for excavation, implies a very precise technical and economic evaluation. There are several challenges to meet on this job site, starting with the hardness of the rock, which isn't the only aspect that we evaluated carefully; organisation and logistics have a big role in this project too."

Reliability and productivity

The rocks along the section have a strength of 35-150 MPa, providing a test of the hammers' power and performance. Sebastiano Liso commented: "We've been using Indeco hammers for a few years now. At the Andria site, we're using an HP 7000 coupled to a CAT 340 excavator and two HP 5000 coupled to CAT 330 excavators. This application immediately presented a challenge to prove the reliability of both the machines and attachments; the hammers, especially, were constantly submitted to stress."

Helping provide productivity were Indeco's solutions for its hammers. The HP 7000 and the two HP 5000 used for excavating the trench feature a special hydraulic system that automatically varies energy and blows according to rock hardness. The hydraulic power delivered by the excavator is thus ensured. The dual damping system helps to minimise stresses to the boom and subject it to the least amount of vibrations possible along with providing the optimum ratio between weight and power.



COMMITTED TO FLOOR GRINDING AND POLISHING TECHNOLOGY

www.ashinediamondtools.com



With a strong R&D team, consistent quality,
and professional customer support,
Ashine enhances customer advantages in market
competition to strengthen long-term collaborative partnership.

ASHINE
Grinding & Polishing Expert



ALL IN ONE
AUTOMATIC QUICK HITCH
THE NEW STANDARD



SAFETY
DURABILITY
EFFICIENCY



www.arden-equipment.com
+33(0)3.24.33.64.30



INDOOR ATOMISED DUST CONTROL CREATING SAFER WORKPLACES

Bosstek, the leading atomised mist technology for dust control company, has introduced a new model that aims to suppress indoor particulate emissions for industries such as demolition and raw material handling.

The compact 'DustBoss' DB-10 is the latest addition to BossTek's line of atomised mist cannons. Engineered for enclosed working environments, the easily manoeuvrable unit provides excellent suppression in a compact, portable design. The outcome is effective airborne particle control with fewer emissions, less standing water and a safer, more compliant workplace.

"Our customers are well acquainted with our technology, but before the DB-10, the smallest machine could nearly cover a football field, which is far too powerful for most indoor applications," said Mike Lewis, dust control specialist at BossTek. "Our first customer to use the DB-10 was a demolition contractor removing dusty drywall, plaster and tiles containing potentially hazardous materials. These all produce highly regulated dust emissions. We worked with them to create a unit best suited to their needs and the DB-10 was born. They are extremely happy with the outcome."

The compact mist cannon is mounted on two wheels with a tall handle. Similar in size to a child stroller, it is light and easy to manoeuvre, while still offering industrial level dust control. A fan delivers 3,335m³ of airflow, powered by 120V current. Mounted on the front of the cannon is a circular manifold with 12 atomising nozzles that fracture pressurized water into a fine mist. About as loud as a hand held hair dryer, the fan forces air through the barrel then pushes millions of tiny droplets in a cone shaped pattern up to 10m. Using the 0-50° vertical adjustment, the mist can reach into the rafters of warehouses or be directed at specific emission

zones. It is offered with a standard wheeled carriage but can be specified with alternate mounting as needed.

Atomised mist

Beyond space constraints, the DB-10 solves several issues associated with dusty indoor operations. During indoor demolition, for example, harmful dust can fill the area and drift across the site line, creating a violation, but atomised droplets stop dust at the point of emission. Workers are often assigned to use hoses for small scale dust suppression, which adds to the labour cost, whereas the DB-10 requires no labour to run. Moreover, being in proximity of large machinery and falling material can be hazardous to personnel.

One driver of the new design is the fact that hoses create droplets up to 100 times larger than atomised mist, far too large to capture airborne particulates. They can use up to hundreds of litres of water, causing excessive standing water and runoff, a potential hazard. The DB-10 aims to address all these issues. "The dust emissions from indoor demolition or concrete cutting and breaking can create tiny particles that you can't see," Lewis pointed out. "These can get deep into your lungs and cause serious breathing issues, but the mist droplets are small enough to capture individual particles at the moment of emission and drag them to the ground."

The DB-10 produces droplet sizes of 50-95microns in size, roughly the same as the cross section of a single human hair. This is important because regulators test for respirable dust 10microns or less, like those found in

indoor demolition. The slipstream created by droplets greater than 200microns in size can deflect tiny respirable dust particles, rather than absorbing them. That's why hoses are generally not effective against airborne dust. The DB-10 uses less than a quarter of the water volume of a handheld 25.4mm hose, filling the area with a dust trapping mist that stops particulates from remaining airborne or migrating away from the area. The wide area of distribution and gentle settling reduces the chance of pooling and runoff.

Case study

A demolition contractor was recently performing an indoor demolition and found that disruption to dust storage piles of recycled material was causing airborne dust emissions. Although piles could be covered at night, activity during the day was causing particles to drift into neighbouring communities. An onsite demonstration of the DB-10 showed the contractor that the atomised mist pulled the dust out of the air at the point of emission, preventing it from traveling across the site line. The fog cannon effectively controlled both airborne and ground level particles with no runoff or puddling. This resulted in the contractor purchasing two machines for different projects. "Watching these units in action under actual working conditions reveals how the dust falls to the ground and stays there," added who Lewis concluded, "This approach to particulate control will give operators more flexibility and mobility to respond to dust causing conditions."



WHAT'S NEW IN CRUSHING AND

screening attachments?

Despite being just an excavator attachment, a modern day crusher bucket equals the production capacity of a mobile jaw crusher. And these attachments are getting more efficient and sophisticated every year. PDi's Andrei Bushmarin looks into new compact crushing and screening solutions.

CM gives a facelift to 'CBF' crusher bucket range

Italy based excavator attachment specialist CM was established in the early 1990s in the province of Vicenza. Originally a mechanical engineering contractor, a few years later the company developed into a fully-fledged manufacturer of earthmoving and recycling attachments. For the Italian company, crusher and screening buckets are a core business. Its flagship CBF and CBF-L series of crusher buckets have recently received a facelift. The CBF-L attachments are designed for skid steers, mini excavators and backhoes. The CBF series, on the other hand, is made for excavators and wheel loaders with an operating weight of 10t to 45t. The redesigned

CBF attachments feature a lower structure, resulting in greater force in the loading phase and improved weight



balance. In addition, the buckets boast a larger opening, which allows crushing of larger blocks with the same carrier/attachment size ratio. The eccentric unit has been revised, with all bearings increased in size, while the transmission and flywheels have been increased in diameter and weight to have greater inertia during the work phase. The jaw opening is now adjustable from 15mm to 135mm. A nebulizer kit is optionally available to reduce dust during crushing. Other features include a magnet with control panel kit to separate the reinforcing iron after crushing and the digging teeth to ensure better entry during loading. A new integrated block has been installed to protect the motor.

www.cmcrushermachines.com

GET THE
RED
CRUSH!

DEMOLITION

- ✓ MAXIMUM PERFORMANCE
- ✓ LOWEST OPERATIONAL COSTS
- ✓ HIGHEST RELIABILITY





Xcentric Ripper has a solution for every recycling task

Spain based Xcentric Ripper developed and marketed its first 'E' series of crusher buckets in 2015. The series, which include the XC15, XC17, XC20 and XC30 models, is designed for 13t to 35t excavators. It was followed by the 'A' series, which was launched into the market in late 2019. The A series consisting of the XC8, XC9, XC13, XC19, XC21, XC24 and XC29 models boast a number of improvements on its forerunner. The granulometry adjustment system offers rapid change and a broader choice of output sizes. The flow control valve makes the attachment easily interchangeable between excavators, with low risk of failure due to inadequate hydraulic adjustment. The bucket can be fully opened to simplify the replacement of jaws. In 2022, the XC19 bucket, designed for 16t to 21t excavators, was the most sought after model. In addition to the above mentioned series, in 2021, Xcentric Ripper designed the XC5F model for small carriers. This front crusher bucket for skid steers, telehandlers and backhoes between 4t and 6t was developed to ensure the balance between maximum power offered by the excavator and greater input size capacity of

the crusher. The idea was to make it possible to operate with flow rates of 90l/min and within the pressure range of 16MPa to 24MPa. The attachment's main features include a new system of dampers to reduce noise pollution, the ability to do the crushing in the 'forward' and 'reverse' mode and the robust structural design. According to the Spanish manufacturer, the XC5F has already proved itself on different types of materials, including rock, asphalt and concrete from demolition sites.

www.xcentricripper.com

Waste is no longer a burden but source of income

'With the MB Crusher bucket crusher, we can control our waste ourselves, grind it when we want and make use of it as we want', states company Eurocave, based in the region of Marche, Italy. Eurocave operates several quarries where it extracts the Serene and Alberese stones. The extracted stone is directly processed by Eurocave to make architectural elements and worktops. Using a MB Crusher BF120.4 jaw crusher, the company fixes the haulage roads without having to buy crushed stone from a third party and they sell the extra aggregate for

road subgrades. Before buying the MB bucket crusher, it would accumulate production waste in the yard, which took up a lot of space. Occasionally it was crushed with a rented crusher. The whole operation was very costly and personnel intensive. Today, thanks to the BF120.4 bucket crusher, waste is no longer a burden but rather a source of additional income.

www.mbcruiser.com

Simex launches two models for mini and mid-range excavators

Italy based Simex has introduced two new models of screening buckets for mini and mid-range excavators. The VSE 2 fits the 1.5t to 3.5t carriers while the VSE 5 is designed for the 4t to 8t machines. The main fields of application are landscaping and small inner city construction sites. On the front attachment side, Simex has launched a new range of screening buckets for skid steers called 'VS'. Encouraged by the positive response from the demolition and recycling sector to the first model - the VS 1500 - Simex has extended this series with a new bigger model, the VS 2000, having an operating weight of 920kg.

www.simex.it

A NEW DIMENSION IN SURFACE PREPARATION



REMOVE, PREPARE AND REFINE FLOORS GET READY FOR A NEW DIMENSION IN SURFACE PREPARATION

Introducing the former Blastrac surface preparation portfolio of scarifiers, scrapers and floor grinders under the Husqvarna brand. With even wider options, and as one passionate team, we are committed to shaping the surface preparation industry for tomorrow.

 **Husqvarna®**

www.husqvarnaconstruction.com

TopTEC

SPEZIALMASCHINEN GMBH

TopTEC Spezialmaschinen GmbH
REMOTE CONTROLLED DEMOLITION ROBOTS
Breithornstraße 10 · D-81825 München
E-mail: info@toptec-germany.de
Tel.: +49 (0) 89 - 42 72 05 50



www.toptec-germany.de



DIAMOND
Hire & Sales
ROCK DRILL HIRE
Zero HAVS
Fast Drilling
Increased Production

**DESIGNED FOR
DRILLING,
ENGINEERED TO
LAST!**

Call: 0800 0015105



www.diamondhireandsales.co.uk info@diamondhiresales.co.uk



A Simex front screening bucket reduces salt blocks in Northern Italy

A Ferrara based contractor found itself dealing with a recurring problem: the crystallisation of de-icing salt used for road thawing. Purchased by the company at the beginning of the year, during the summer salt accumulated and solidified in large irregular blocks, up to 1m wide, making it unusable for salt spreading. A Simex VS 1500 front screening bucket was used to overcome this challenge. With an operating weight of 790kg and a volumetric capacity of 0.45m³, the bucket features two rotating shafts made of the 'FIT' screening elements, which ensure intense whirling of the input material. The bucket reduced salt to an output size of 0-20mm, which was ideal for the subsequent use in the salt spreaders. The contractor was extremely satisfied with the attachment's performance, saying that it was the only viable solution in this particular situation.

www.simex.it

Rock.Zone parades 'Rockcrushers' and 'Rockscreeners' at bauma

Germany based Rock.Zone used bauma 2022 to present its wide range of crusher and screening buckets. The company's crusher buckets are marketed under the brand

name of Rockcrusher. The buckets' smart design and the 'quattro movement' system ensure low vibrations during crushing. Other features include replaceable side plates and a frame made of hardox steel. The quattro movement system provides optimised ellipse movement of the crushing elements, which results in what the company

says is 30% more cubically shaped product. Thanks to this solution, even such challenging materials as river rock can be crushed efficiently. The reverse function allows clearing of the crushing chamber in case of a blockage. The manufacturer's screening bucket range is called Rockscreener. The buckets come equipped with an oversized maintenance free heavy duty gearbox. A large inlet area allows for more material to be taken in, resulting in higher production rates.

www.rock.zone

Allu launches new 'D Series' variable drum

The new Allu variable drum enables users to quickly replace fixed 'TS' (top screen) blades without the necessity to open the chain box. Allu's patented TS construction and screening blades make it possible to screen materials even when they are wet or moist without the risk of the structure getting clogged. With the TS structure, it is also possible to get three different fragment sizes from the same Allu unit by rearranging the screening combs with no additional costs. The Allu 'Transformer' D-Series screener buckets are designed for large scale processing jobs such as aerating compost, primary on site screening and recycling construction material.

www.allu.net



Convention & Exhibition

White Petals, Palace Grounds



indian demolition association



India's 2nd Dedicated Conference and Exhibition for Demolition, Concrete Cutting

Affiliate Sponsors:



Three
More
Available
Positions

Platinum Sponsors:
Ten Available Positions

Gold Sponsors:



Seven
More
Available
Positions

Silver



Watch out for Registration and Exhibition alerts soon. For Sponsor Opportunities

, 28-29 September, 2023

unds • Bengaluru, India



DEM TECH

2
0
2
3

An IDA - Indian Demolition Association Event



ng, Recycling & Remediation Techniques

er Sponsors:



Four
More
Available
Positions

Organisers:



**HEADLINE
SPONSOR**

**One Available
Position**

es. Contact IDA for more information

www.indiandemolition.org • www.demtech.in

The new Allu 'Variable Drum'

Allu has announced the introduction of the new Allu D Series 'Variable Drum'. This enables users to quickly replace fixed 'TS' blades with there being no need to open the chain box when blades are replaced. This variable drum setup means an individual drum or blades can be changed quicker, thus saving time and money. Allu's patented TS (top screen) construction and screening blades are designed to make it possible to screen materials even when they are wet or moist without fear of the structure getting clogged. With the TS structure, it is also possible to get three different fragment sizes from the same Allu unit by rearranging the screening combs with no additional costs.

The Allu 'Transformer' attachments D series are designed to be versatile and reliable tools for industries enabling efficient screening and crushing of materials, being designed for larger processing jobs. This includes aerating compost, primary on-site screening and processing construction material. It is a bucket which screens, crushes, pulverises, aerates, blends, mixes, separates, feeds and loads materials. As the name suggest, it has been developed to transform the materials worked with and be more productive and more profitable.

Allu states that it has been consistently one step ahead, leading the industry for over 35 years, with truly mobile, compact screening buckets, which are the perfect attachment for compact base machines to screen and transform materials. There are many applications for Allu Transformer attachments; those interested are invited to contact the company which will help select the right tool for specific needs. The company states that with Allu, users are always in control when transforming waste into profits.

The new Allu VD Drum is currently available for DN 3-12 TS and DN 3-17 TS models.



KOMATSU EUROPE ANNOUNCES THE NEW 'SUBMONITOR' FOR WHEEL

The SubMonitor is a new Komatsu platform designed for intuitive assistance systems for maximum efficiency and safety while loading.

Komatsu states that its customers have stated that to meet their continual challenges and ever increasing operational complexity, they need solutions that deliver safety, real time information, machine monitoring, driver assistance, production monitoring, efficiency optimisation, future proofing and be easy to use for the driver without causing distraction. The company used this feedback to develop and introduce the Komatsu SubMonitor for wheel loaders which meets these requirements in one intuitive easy to use touchscreen interface.

Focusing on simplified operation by merging many features into one device, the SubMonitor creates a new interface for the operator to interact with the machine's assist systems. These include an extended 'Load-Pilot', a new rear view supervision system with high definition camera and rear radar obstacle detection, as well as a new, performance boosting 'Efficiency Trainer' module. The ergonomic touchscreen provides easy, intuitive operation, reducing confusion and work interruptions versus the multitude of separate sub systems that are all too common today. The Komatsu SubMonitor is said to be the basis for a new era of machine features that deliver unrivalled control, comfort, and safety.

Extended Load-Pilot

The proven Komatsu Load-Pilot weighing system has been updated in terms of functionality and controllability. Since all important elements are displayed on the monitor, adjustment can be easily made on the screen with just a few clicks, without having to dive into the machine menu. The tidy arrangement of all functions

is self-explanatory. Accurate and fast weighing results through the improved auto weighing function, material definition at will and productivity and efficiency display for different materials enable smooth operation.

Efficiency Trainer

This is a new feature that improves driver's skills during actual work to increase performance and increase efficiency. Based on a new algorithm, the system learns itself for each loading cycle. The reference is set by the operator taking into account different operating conditions not specified by the machine on the basis of fixed data. The evaluation is based on several machine data inputs which are evaluated with the help of a point system. As the charging performance improves, the reference is raised. If the charging performance decreases, the deficits are displayed based on criteria and improvements are suggested.

Rear view supervision

Wheel loaders must reverse for each loading cycle. Since there is no direct view from the cabin, the rear area surveillance is one of the most elementary safety systems. The new digital camera system, combined with radar obstacle detection, is designed to provide an overview of the situation behind the machine. The SubMonitor's high resolution screen displays the image crisply and clearly, and radar obstacle detection provides the operator with audible and visual warnings of hazards behind the machine. The SubMonitor is optionally available as equipment for the wheel loader models WA380-WA500-8.

Requirements changing. Quality stays.

You can find us on

BeBoSa

March 23-25, 2023, Willingen
hall A1 booth 1R16



Grinder FG500M

Streamer S210E40R

Grinder FG250





YANMAR TO EXHIBIT AT CON/EXPO 2023

Yanmar will introduce equipment from its new power range and share the company's vision for a zero emission resource recycling future at Con/Expo 2023.

Exhibiting at South Hall 2nd Level, S84014, together with Yanmar Group companies Eleo and Hipower Systems, Yanmar America will demonstrate its dedication to delivering exceptional customer experience throughout the entire customer lifecycle. As well as showcasing the company's extensive product portfolio, Yanmar will share the company's current and future vision for power equipment, including the 4TN107FTT power pack, Hipower Systems' 'EHR' battery power generator, the Eleo modular, high density battery and unveil the 'Yanmar Green Challenge 2050' vision for the future.

"Yanmar is committed to responding to the challenges of the future with superior power that meets the needs of today's customers, while developing new products and technologies that take advantage of alternative fuel sources," said Ron Adams, director Power Solutions, Yanmar America Corporation. "Through close collaboration with dealers and OEMs, we seek to deepen our relationships and deliver greater value to our customers with our new power technologies."

4TNV107FTT power pack

Yanmar America is showing its highest rated industrial engine at ConExpo, the two stage turbocharged 4TN107FTT. While the engine has been in production since 2021, it first became available in the US in 2022. In a first for Yanmar industrial engines, the 4TN107FTT benefits from two stage turbocharging, with a low pressure turbocharger delivering increased power at higher

speeds and a high pressure turbo boosting power at low engine speeds. An exhaust gas recirculation (EGR) system integrated into the cylinder head combined with a compact exhaust after treatment package by diesel oxidation catalyst (DOC), diesel particulate filter (DPF) and selective catalytic reduction (SCR) allow the engine to meet EPA Tier 4 final and EU Stage 5 exhaust emissions regulations. Yanmar America is also showing its 4TN107FTT power pack configuration - a complete drop in power unit for a broad range of industrial applications.

EHR battery power generator

The Hipower Systems EHR is an innovative energy storage and distribution system that reduces noise and emissions and offers a variety of advantages, including increased reliability and improved energy efficiency. It can be used independently or integrated into power generation systems running on diesel or spark ignited generators. The system can also be connected to the grid or used with photovoltaic or other renewable generation.

Modular battery systems

Eleo Technologies B.V. is a battery technology manufacturer located in Helmond, the Netherlands, with Yanmar acquiring a majority in the company in April 2022. ELEO will display its next generation of battery systems at the Yanmar booth. In January, Eleo officially opened

its new battery production plant, increasing its annual battery production capacity tenfold to 500MWh – the equivalent of approximately 10,000 battery packs. The new battery system is the second product generation from the Dutch manufacturer after the first generation started production early 2020. With the new product, Eleo offers industrial OEMs flexibility from the scalable design to meet the wide variety of requirements present in the off highway industry.

Yanmar Green Challenge 2050

Yanmar has launched the Yanmar Green Challenge 2050 with the goal of achieving carbon neutrality and promoting sustainability and resource recycling. This challenge is driving product development, creating new fuel systems, and fostering collaborations with OEMs to reduce environmental impact and promote resource recycling. Yanmar is investing in the development of new energy sources for customers and industry and is striving for zero emissions from its headquarters and facilities. The company has already started several new energy projects in different business lines, including hydrogen powered cogeneration, research into hydrogen fuel marine engines, bio gas cogeneration, dual fuel power solutions with natural gas, fuel cell marine technology, smart agriculture, and resource recycling technologies. These efforts demonstrate Yanmar's commitment to creating a greener and more sustainable future.

MULTI-FUNCTIONAL 48 T DEMOLITION MACHINE

830E

► DEMOLITION

Multifunctional and powerful

- 3 t load capacity at 23 m working height over 360°
- Numerous equipment options available

More safety and better vision

- Extreme stability due to wide support area (4.5 m)
- Elevatable and tiltable cab

Cost effective in transport

- < 3 m transport width
- Hydraulically unloadable counterweight (optional)

**NEW EQUIPMENT
WITH 23 M REACH**



For further information
► sennebogen.com/830-demolition



Telehandler

Balancer

Material Handling

Duty Cycle Crane

Crawler Crane

Telescopic Crane

Mobile Harbour Crane

Alexander Sturm

SENNEBOGEN
Vertriebs GmbH & Co. KG
94315 Straubing, Germany
alexander.sturm@sennebogen.de

SENNEBOGEN



STEELWRIST AT THE CONEXPO SHOW IN LAS VEGAS, 14-18 MARCH, 2023

At ConExpo, Steelwrist aims to provide visitors with the opportunity to meet the growing North American team and to experience demonstrations of how the tiltrotator and the 'SQ' fully automatic quick coupler system increase excavator efficiency. In the interactive booth, visitors will see several new products at first hand, and as they make their way through the festival grounds, Steelwrist products will also be on display with several other major excavator manufacturers.

Steelwrist extends the quick coupler and tiltrotator offering

The new range of SQ50 quick couplers and tiltrotators is targeted toward 7t to 13t excavators. SQ is a high performing fully automatic oil connection technology, used in quick couplers and tiltrotators on excavators to connect hydraulic work tools. Steelwrist says that outstanding flow characteristics and competitive building height and weight are significant advantages of the SQ50 which meets the specifications of the Open-S standard for fully automatic quick couplers.

The X12 and X14 tiltrotators are redesigned with a new top and attachment coupler in order to make it possible to upgrade from S50 to SQ50 at a later stage. SQ on the top side (upper coupler) of the tiltrotator for rapid change between tiltrotator and other work tools, and SQ on the bottom side (attachment coupler) of the tiltrotator are designed to enable a rapid change between hydraulic work tools. By using SQ, tiltrotator work tools can be made less expensive as the rotation function is included in the tiltrotator.

With the introduction of SQ50, 'Qplus' technology has been updated to allow for even higher flows, adding another 20% to flow capacity. "With the introduction of SQ50 fully automatic quick couplers and tiltrotators, we will change the game in the growing 10t excavator

segment with flow capacities of 120l/min with low back pressure. This allows for efficient use of high flow work tools also for mid-size excavators," says Stefan Stockhaus, Steelwrist CEO.

Meeting the demand

Steelwrist's range of SQ fully automatic quick couplers includes models for excavators up to 70t. The latest addition to the range for the demolition industry, the SQ90 quick coupler, will also be presented at ConExpo at the Steelwrist booth. All Steelwrist SQ products follow the global Open-S industry standard for fully automatic couplers for excavators. The ambition with the global Open-S industry standard is to give machine operators and contractors around the world the freedom to combine quick couplers, tiltrotators and work tools from different manufacturers who follow the standard.

With a common standard it is easier for industry manufacturers to continue competing with performance and functionality, and still offer customers' compatibility. "The global Open-S industry standard is good for both the

machine owner and the industry as a whole. It strives to give the machine owner the freedom to choose what solution to buy and the manufacturers to focus on developing features that enhance performance and functionality of their products," says Stefan Stockhaus, Steelwrist CEO.

Tiltrotator range expanded

The installation ratio for tiltrotators on the smallest excavators is starting to grow globally and in response Steelwrist is now introducing the new X02, a tiltrotator suitable for 1.5t to 2.5t excavators. The X02 is accompanied by a complete range of work tools resulting in increased efficiency and versatility which also convert the smallest excavators into true tool carriers. The X02 was first shown to the world at bauma, Munich, in October 2022, and has now made its way to North America. The X02 is positioned between the smallest 'TCX' tilt coupler for machines below 2t and the X04 tiltrotator for excavators from 2.5t to 4t. Again, the focus with X02 has been to design and make a fully cast product with the best strength-weight ratio and low building height.

Optimised range of work tools

The X02 tiltrotator is accompanied by a complete set of Steelwrist S30 work tools, such as grading, digging, cable/trenching and 'ditch bucket, asphalt cutter and ripper. In the autumn of 2022, a multi grapple was added to the work tool offering for the X02. This turns the excavator into an efficient and versatile tool carrier that can perform work in a wide range of applications. "With the launch of the X02 we finally complete the tiltrotator range for excavators below 2.5t. The X02 is a fantastic combination of innovation and robustness which customers have been waiting for," says Stefan Stockhaus.

You can find Steelwrist at its booth F8726 at the ConExpo-Con/Agg show 14-18 March in Las Vegas.





WORLD'S BEST SELLING QUICK COUPLER

QQ – FULLY AUTOMATIC QUICK COUPLER SYSTEMS FOR BOTH SMALL AND HEAVY EXCAVATORS!

We offer the world's best-selling quick coupler system with over 45,000 systems sold worldwide. We have decades of experience and testing behind us. Our solutions work and you get an outstanding combination of quality, performance and safety.

- Lightning fast change of hydraulic, electrical and mechanical attachments from inside the cab.
- Always the right attachment for the job.
- Distributes oil, grease, water and electricity.
- No staff around the machine during tool changes.
- Improved safety.
- Meets and exceeds safety standards globally.
- Increased productivity.
- Increased profitability.
- Reduce the number of machines on the site.
- Reduced transport costs.
- Eliminates oil spills.
- Protected hose run.
- Less dirt in the cab.
- For machines 1-120 tonnes.



MEET US AT CONEXPO IN LOS ANGELES, MARCH 14-18. BOOTH F8739

**CONEXPO
CON/AGG**

Booth: **S5372**

Live Demo:
Silver Lots 1-2

MB
THE CRUSHING EVOLUTION

THE CRUSHER BUCKET FOR YOUR EXCAVATOR

Jaw crusher for excavators. When installed on your excavator, it transforms waste into high quality material ready to be reused.



FOR EXCAVATORS,
BACKHOES, LOADERS
AND SKID STEERS

≥ 4,5 ton



REDUCE >> REUSE >> RECYCLE

MBCRUSHER.COM

CRUSHER BUCKETS | SCREENING BUCKETS | SHAFTS SCREENER | DRUM CUTTER | SORTING GRAPPLES



6,000m² of retail space renovated during ongoing operations

Efficient floor grinding technology and perfected dust reduction enable renovation without interrupting sales.

The major challenge when renovating floors in large retail areas is to disrupt ongoing sales operations as little as possible. In furniture stores in particular, there is also the major challenge of working with as little dust as possible. With this particular example, Schwamborn shows how this was achieved with great success at Möbel Roller in Offenburg, Germany.

Schwamborn, one of the leading manufacturers of state of the art floor grinding machines, has been delivering to its customer systematic floor processing for over 85 years. The company says that during this time it has perfected a system that ranges from covering removal and substrate preparation to almost perfect dust reduction. This made Schwamborn the first choice for the renovation of 6,000m² of retail space in the furniture store.

The work steps

In the first step, the floor covering consisting of PVC, linoleum and carpet was removed with a ride on floor stripper. After that, the remaining filler and the epoxy resin coating had to be removed and the floor prepared for the new covering at the same time. With the Schwamborn DSM 800RC, a three disc grinding machine that can be operated with remote control, this heavy work can be carried out with the greatest possible comfort for the operator. According to the motto of Schwamborn application technology, 'hard soils, soft binding - soft soils, hard binding' - the DSM 800RC was equipped with the new Schwamborn 'Giants C-SSC' with a 20 grain. These powerful grinding diamonds of the 'TripleA class' aim to impress with their durability and thoroughness on large surfaces.

"A set of grinding diamonds each had a tool life of 1,200m². The preparation of the substrate, including the removal of filler and epoxy resin, was carried out so efficiently in one grinding operation that the floor was prepared to mineral purity at the same time," explains Ewald Wohlfart from Schwamborn Application Technology. In this way, the furniture store was able to be fitted section by section with a

floor covering made of polyolefin (wood look) in the shortest possible time while operations continued.

Perfected dust reduction

"The full strength of the 'Schwamborn system' is particularly evident in furniture stores with dust sensitive exhibits, in which machines, diamond tools and the integrated dust extraction system are so perfectly coordinated that not only the floor can be renovated extremely efficiently, but also people and material remains largely dust free. Thanks to high performance dust separators, such as the STA 550 in this case in combination with the Schwamborn STS 750 industrial vacuum cleaner, this can be disposed of cleanly and without any problems with the least possible amount of waste," says the experienced application engineer Wohlfart happily.

After the grinding, the floor was primed and the cracks in the subsoil were repaired with epoxy resin in accordance with the standards. Möbel Roller in Offenburg was able to enjoy a new, attractive and durable floor on its large sales area in a very short time.



The grinding discs of the DSM 800RC were equipped with the new Giants SSC with a tool life of 1,200m².

RONDA®
VACUUMS FOR LIFE

BeBoSa
stand
1D17



Heavy duty vacuum cleaners with filter technology second to none



DUST EXTRACTORS H-CLASS

RONDA® 200H Power



DUST EXTRACTORS H-CLASS

RONDA® 1800H Power



VACUUM CLEANERS H-CLASS

RONDA® 2800H



WATER SLUDGE RECYCLING

RONDA® 350

A large step towards a healthy work environment

V. BRØNDUM A/S

See the full range of
RONDA® vacuum cleaners on
www.brondum.com



DRY TECHNIQUES ARE COMING TO

the fore in core drilling

In a world increasingly concerned with environmental issues, businesses are constantly striving for greener and more eco-friendly solutions. The concrete sawing and drilling industry is no exception. In recent years, dry coring and sawing methods have become a focal point for most manufacturers. PDi's Andrei Bushmarin reviews the latest innovations in core drilling.

Kern-Deudiam prioritises dry techniques

Dry drilling in reinforced concrete is becoming increasingly popular with specialist contractors. Responding to the trend, Germany based manufacturer Kern-Deudiam has developed two types of drill bits for dry coring. Its 'Beto' is designed for simple day to day tasks whereas the type 'Unix' is intended for professional users. The latter even allows drilling of steel bars of up to 30mm in diameter. In dry drilling applications, the airflow is extremely important so the German manufacturer created the 'aiRing' (available for all diameters up to 100mm), which is placed over the drill bit so even if the core breaks, there will still be sufficient space for airflow. One hazardous element used in diamond tools since the beginning of the industry is cobalt. Kern-Deudiam has invested a lot of effort in developing alternative products without the use of cobalt. The result is the new product family called 'Dtox'. Unveiled at the bauma last year, this cobalt free portfolio consists of wall saw blades

and floor saw blades such as the SWF131 or SWF141, single segments and core bits. The latest products added to the Dtox range are the core bits DB121 with a wave shaped segment (for easy drilling start) and iconic arrow

showing the drilling direction. The DB121 has already demonstrated high drilling speed and long service life on many construction sites. Also new from Kern-Deudiam is a line of cobalt free rings for 12.7mm small diameter core bits.

www.kern-deudiam.de



New Avant 645i
& 650i loaders

Raw power in a super compact frame

AVANT[®]

Ideal for demanding professional use in confined spaces, the new Avant 645i & 650i loaders have plenty of power and torque.

- ✓ The world's most compact loaders in their power class
- ✓ 44 hp Kubota diesel engine with a DPF (EU Stage V & US Tier 4 Final compliant)
- ✓ High-flow auxiliary hydraulics (75 l/min)
- ✓ Low own weight
- ✓ Top-notch GT cab for superior comfort



Avant loaders and attachments

Avant Tecno Oy
Phone +358 3 347 8800 | sales@avanttecno.com
Ylötie 1, 33470 Ylöjärvi, Finland

AVANTTECNO.COM

T.D.B.S.

In terms of dust ahead of the game

D.A.S - Rotor alloy
1 1/4" male x M16 female

Heavy load extraction
1 1/4" male x 1 1/4" female
also available in alloy
Connection variable

Suction rotor GK - System

Dust extraction

NEW!
6 - hole heavy load extraction
6 - hole connection x 1 1/4" female
also available in alloy



Husqvarna extends electric range

Sweden based bellwether Husqvarna has expanded its 'i-Series' battery powered range of core drilling systems with the addition of the DM 540i model. The new machine is designed for handheld drilling of 15mm to 75mm diameters and up to 100mm on a drill stand. The specially developed thin walled drill bits ensure better utilisation of the machine's battery power and are available for 25mm to 100mm drilling to a maximum depth of 350mm. Håkan Pinzani, global product manager, Core Drilling, provides some detail on where the drill's physical characteristics are at their most useful: "The new DM 540i can be used both outdoors or indoors for wet and dry drilling. Its ergonomic design, low weight and well balanced body deliver easier, more comfortable operation, making it an ideal choice for drilling in confined spaces and tight corners. With fewer parts to service, operating costs and downtime are both reduced." The DM 540i is part of Husqvarna's i-Series battery eco system, which means its battery can be used on various Husqvarna products. Furthermore, without the need for power from the grid, productivity is enhanced. Håkan Pinzani concludes: "Ergonomics, user friendliness and a versatile battery system are only some of the characteristics that set DM 540i apart from other machines. Built in connectivity means that location, runtime and service intervals can be easily monitored and wireless updates received."

www.husqvarnagroup.com



Eibenstock to launch a host of innovations at BeBoSa

Germany based manufacturer Eibenstock is planning to use the BeBoSa trade show in Willingen this March to present its latest innovations. In the dry coring segment, the ESD 250 drilling motor will be unveiled along with the hand guided ESD 162 drill. Both machines feature the company's 'Impact Hybrid Technology' - a newly developed, extremely robust soft impact transmission. The technology allows efficient dry drilling of up to 162mm and 250mm diameters in reinforced concrete. Another product to be showcased at BeBoSa is the PLE 450 AS - a new drilling unit with a powerful, water cooled three phase motor. Thanks to a powerful 5.2kW motor and three speed oil bath gearbox, the machine can easily drill holes up to 452mm in diameter. The accompanying drill stand features an integrated fine feed for improved feed control and fatigue free drilling. Last but not least is the new lightweight yet powerful hand saw ETR 400.2 P for wet cutting to a depth of up to 152mm.

www.eibenstock.com





CRUSHING AND SCREENING EQUIPMENT



SCAN FOR MORE
INFORMATION



www.cmcrushermachines.com - T. +39 (0) 445 576654
info@cmcrushermachines.com

SaMoTer

3-7 MAY, 2023
VERONA, Italy

DDMBRANDING.COM

MOVE IT

MOVE YOUR BUSINESS WITH SAMOTER

INTERNATIONAL **CONSTRUCTION EQUIPMENT** TRADE FAIR

REGISTER NOW!

SAMOTER.COM

EXHIBITION PARTNER



CO-LOCATED WITH

asphaltica

VERONAFIERE.IT



Organized by
veronafiere
Trade shows & events since 1898

Kleemann announces new 'Mobibelt' mobile stackers for optimised logistics

The new Mobibelt mobile stackers have been designed to be used for more efficient logistics processes on work sites. They flexibly extend the action radius of crushing and screening plants and thus make large stockpiles, delivering improved work site logistics and thereby providing a more flexible arrangement of work site processes.



Nowadays modern crushing and screening plants regulate material streams within the plant to a large extent automatically. Nevertheless, machine operators still have a strong influence on the final product quality and the daily output. They control the input with their excavators and wheel loaders, i.e. the loading of stone or recycling material. Users also play the main role with regard to output. They coordinate the final products by means of building up stockpiles, intermediate storage areas and loading. With the new Kleemann stackers, Mobibelt MBT 20(i) and MBT 24(i), logistics can

now be organised flexibly and adapted to the respective situation.

Both stackers are equipped with a large 1.25m³ feed hopper made of resistant 'KRS' (Kleemann Resistant Steel), which permits the feeding of material with an edge length of up to 200mm without any problems. An optional hopper extension up to 2.5m³ is provided with an additional impact bar that prevents the direct impact of the feed material on the conveyor belt and thus reduces wear. Thanks to the hydraulically adjustable feed and discharge height, a fast set-up is possible

and the stackers can be used flexibly behind screening and crushing plants with different discharge heights.

The operation of mobile stackers is less complex than crushing plants and it should also be simple and convenient. The Mobibelt MBT 20(i) and MBT 24(i) therefore have an 'Spective' operating concept that makes intuitive operation of the machines possible. During a typical workday, the operator receives support with a central operating position, local operation and the option of troubleshooting help via 'Spective Connect'.



Game changer for professionals

Dry drilling in reinforced concrete is becoming increasingly popular. The desire for this has existed for years and now there are very good solutions to be found. Through the use of professional drilling motors with soft percussion – both stationary and hand held – a very good vacuum cleaner and special developed drill bits, dry drilling in reinforced concrete is now possible without any problems.

The German manufacturer Kern-Deudiam has invested a lot of development work in special drill bits for this task. The results are two product lines of drill bits

which are said to deliver outstanding results. Type 'Beto' is for easy use and type 'Unix2' is for professional use, both said to deliver excellent results in terms of cutting speed and tool life. Even steel bar up to a diameter of 30mm can be drilled dry without any problems.

The company states that the airflow is very important, and due to dry drilling with soft percussion it can happen that the concrete core breaks easily at the top. This clogs the tube and air flow is stopped. To support air flow, Kern-Deudiam created the 'aiRing' which is available for all diameters up to 100mm; even if the core

breaks and there will be 'suct' to the top of the tube, there is still sufficient space for air flow.

New 'Dtox' line

One hazard product used in diamond tools since the beginning is cobalt. Kern-Deudiam has put a lot of effort in developing alternative products without the use of cobalt to make supply chains and work even better. The result of all the development work of the last years is the new product family called Dtox. All products in the range were launched at bauma 2022, and already the cobalt free portfolio consists of wall saw blades and floor saw blades such as the SWF131 or SWF141, single segments and core bits.

The latest Dtox products added are new core bits DB121 with a waved segment (for an easy drilling start) and an iconic arrow in the segment showing the drilling direction. The DB121 has already been proven on lots of building sites, with the company reporting drilling very fast in reinforced concrete with a very high operational lifetime – and all cobalt free.

Next to this, Kern-Deudiam also developed a line of rings for 12.7mm – small diameter – core bits, which are also cobalt free. These rings are also available as single rings and support the user in self-brazing, even providing practical centring help. This means that the ring can be placed on the tube easily as it is self-centring due to a metal ring.



IT'S ALL GOOD AT THE WORLD OF CONCRETE 2023

The 2023 edition of World of Concrete might well rank among the most anticipated event in the show's 49 year history.

As well as the usual curiosity about what new product offerings equipment manufacturers would debut in the new year, WoC's long-standing status as an early calendar industry barometer for the U.S. construction market presented no shortage of questions. Would, for example, the show sustain its post pandemic rebound, especially in a ConExpo/ConAgg year? Would inflation concerns temper attendees' interest in adding to their equipment inventories? And would WoC's somewhat slimmer three day exhibition schedule set an example other trade shows might follow in these digitally driven times.

Numbers provided some largely positive answers for WoC's organisers, as the 2023 edition topped 48,000 registered attendees, up nearly 30% from last year's Omicron shrouded event. That's also just 6,000 below the figure recorded in 2020 when ConExpo/ConAgg - and a few other things - loomed just a couple of months away. Generally, crowded aisles and outdoor exhibits

also seemed to suggest that for a few days at least, any economic worries remained beyond the limits of the Las Vegas Convention Center. "We've been surprisingly busy, something we weren't expecting in a ConExpo year," observed Vinny Vilela, managing director and chief technology officer for wastewater purification and filtration systems maker Matec America. "And we got some good, quality leads."

Buzzing about

The atmosphere at WoC 2023 was electric in other ways as well, with several manufacturers spotlighting their new or expanded lines of battery powered tools. For example, Husqvarna's expansive outdoor booth showcased additions to its 'Pace' 94V equipment, including a preview of its DE 120 vacuum, scheduled for release later this year. Best powered by the B750X battery, the vacuum is designed for a wide variety of heavy duty applications. Also on display were i-Series

36V products, including the DM 540i battery powered drill and DE 110i battery powered dust extractor, both of which are designed for tasks with limited elbow room. Husqvarna also announced an update to its 'Vari-Cut' blade range, designed to provide higher cutting speeds and longer blade life.

Hilti, likewise, continued the rollout of its 22V 'Nuron' platform, announcing that 30 additional products will join the product line this year. Heading the list is the 17.4kg TE 2000-22 jackhammer, which the company says provides 38.2Nm of impact energy and up to 1,800b/min. A Bluetooth feature also allows users to activate a companion vacuum remotely.

Bosch also announced plans to add more than 30 tools to its 'Core' 18V platform during 2023, with more than half to be rolled out by the spring. Booth visitors could get their hands on many of the early arrivals, including the 7kg 'Profactor' 41.28mm SDS max and 'Bulldog' SDS plus 25.4mm rotary hammers, which

**POWER TO
ACHIEVE**

Exceed The Limits, Cut Further, Cut Faster.

The AGP family of **DIAMOND CONCRETE SAWS**:
A full range of ring saw, chainsaw, and wet-or-dry hand saws.
Offering both universal motor models and more powerful high-frequency models.



CS11



C14



C16



R13



CS18



C406



C18



R16

AGP®

AGP Europe
+32 53 21 62 22
info@agp-powertools.eu
www.agp-powertools.com

AGP Taiwan
+886-5-5518689
info@agp-powertools.com
www.agp-powertools.com

Scan For More
Information



Emission-free performance



When less is more

With the new ZX55U-6EB, Hitachi meets the growing need for emission-free equipment and strengthens its commitment to the creation of a sustainable future. Expect zero CO₂ emissions, enhanced efficiency, exceptional performance in confined spaces, as well as low noise, reduced maintenance and less downtime.

Learn more at www.hitachicm.eu

HITACHI

Reliable solutions

deliver 9Nm and 2.4Nm, respectively. Both models also feature kickback control technology, brushless motor efficiency and may be recharged to 80% in less than a half an hour using the Bosch turbocharger. Other new 18V additions for concrete and masonry applications from Bosch included 127mm to 152.4mm grinders - the Profactor angle and 'X-Lock' paddle switch, and 'SDS-max hammer' dust collection attachment for 'R-tec' chisels that use an energy diverting reflection element to increase material removal by 15%.

Steve Shepherd, vice president and general manager for Bosch Power Tools North America, said that while the company is happy with its Core platform, it continues to evaluate other technologies, including those being used by competing manufacturers. "A lot of them are expensive, and we have to consider the needs of workers and power requirements, as well as the price point," Steve commented.

Stihl's latest development for the battery powered arena is the new 3.9kg TSA 230 Stihl 'Cutquik' cut off machine, which can be fitted with up to 228.6mm blades for a maximum cut depth of 70mm. Run time is approximately 18min/charge using the recently introduced A P500 S laminate cell battery system. More tools will be added to the platform in the coming years' company representatives said.

While many other types of battery powered equipment were to be found, DMI Tools stole the show with its electric mini dump truck. With a 28,317cm³ payload capacity for transporting loads of 500kg across open jobsites and through narrow passages, the whisper quiet tiny truckster can run for up to eight hours on a single charge and operate at speeds up to 5kph.

To provide power for all these electric gadgets on the jobsite, Makinex is looking to extend its presence in the on-site power market. In the next few months, the company says it will launch its 32kW 480V 'Power Generator'. According to Makinex's US president Amy Col, the 408kg generator will provide less than 3% harmonic distortion, no transients, or voltage spikes on load rejection, making it particularly attractive to the grinding and polishing segment. In addition to its multi battery 'Charge Pod', Makinex is working on refreshing its 'Portable Power Box' that made its US debut at the 2019 WoC. "We're (the) only ones with power and portability," Col said. "And our goal is to make our line even stronger and deeper."

By the way, if you're curious about the other end of the electric mobility spectrum, Mack Trucks president Jonathan Randall expects electric vehicles to make up more than a third of his company's sales by the end of the decade. "What we sell today, we will have an elec-

tric model for it 2030," he said. He added that interest in electrification is growing among users, particularly those pursuing projects with contractual incentives to use renewable power.

Other tasks, other tools

Batteries weren't the only power source in evidence at WoC 2023. Superabrasive debuted the latest addition to its 'Lavina' line of grinders with two 762mm propane models, the 14.2kW L30GS7 and the 17.9kW L30GKS7. Both offer features such as a new frame design to facilitate better control and easier tool changes, a sealed and dust proof head, and lighter timing pulleys for better power transformation.

Another interesting entry in the always crowded grinder market was Ingy's 813mm HTG 820RC, with a control system that includes an autopilot feature. Remote control is also available for Ingy's 711mm HTG680A, and the 'Tank' 1500 ride on grinder with a grinding width of 1,549mm.

Among the wide range of saws seen around the show was US Saws' MC-800P 'Joint Hog' milling machine/saw, developed as part of a new partnership with fellow Florida manufacturer, Titan Saws. The MC-800P has been designed to remove concrete sections up to 101.6mm wide and 44.5mm deep to repair spalled





joints. It can also be used for grooving, cutting inlays, and to prep for permanent line striping in floors.

Closer to home, figuratively speaking, Southern California's iQ Power Tools showed its iQ1550 546mm 'Dry-Cut' masonry saw featuring an integrated dust collection chamber that holds 34kg of dust. Later this year, the company plans to introduce a new rail saw to cut 1,219mm lengths of 20mm porcelain tiles.

Making its global trade show debut at WoC was Lissmac's 'Unicut' 610 hydraulic deep cutter, with a towering 2,184mm blade. The show also marked Lissmac's first major US appearance since the German company forged a new partnership with New York based diamond cutting manufacturer DDM Concut. "So far, the partnership is working out well, and there's a lot to look forward to," said Lissmac national sales director Mitch Scott.

Other WoC debuts could be found at Diteq's booth, with a new line of diamond saw chains and bars to compete with Oregon, Toolgal, and Maxcut. Engineering manager Mike Orzechowski says the Diteq 'Diamond Chain' has a unique cage to minimise stretching, while

uniquely shaped segments expedite break in to dress the chain on the initial cut. Diteq's standard 'S' chain has been designed to provide great speed and life for everyday cutting, while the 'Life', or 'L', chain segments use the same kind of bond, albeit with a much higher diamond concentration. "It is a very fast cutting life chain that can be used on heavy reinforced concrete," Orzechowski explained. "We will be launching more options soon pending successful testing results."

Diteq also launched a line of heavy duty, or 'HD', vacuum brazed chains to complement its standard vacuum brazed chain product line. Designed for heavy reinforced concrete or ductile iron pipes, the new line has multiple layers of vacuum brazed diamonds on the segments to extend operational life. The focus is on heavy reinforce concrete or ductile iron pipes. Orzechowski further noted that Diteq's new 'Mascot' bars have some unique sizes. Six lengths are available for the ICS 880/890 ranging from 254mm to 914.4mm. Bars for the Hi-Cycle Prime/Weka/Dr Shultz come in four lengths ranging from 305mm to 635mm. "We have

some additional bars and chains for most of the other saws on the market as well," he said.

Looking ahead

To be sure, a productive trade show in January isn't necessarily a guarantee of a great business year. As recent experiences have taught us, something as small as a microscopic virus can upend the world in the blink of an eye, so it's easy to imagine what an intensifying conflict in Europe or protracted budget battle on Capitol Hill might do to the economy. Still, there's little doubt that the mood of most of those leaving Las Vegas was positive, and that there was more to look forward to than fear in the coming months. And if nothing else, WoC 2023 provided exhibitors and attendees alike with a much welcome positivity about the US construction industry, plus it set the stage for the show's golden anniversary next year. "It's been great," said an enthusiastic Larry D'Angelo, Houston area sales representative for Syntec Diamond Tools, in summing up the week. "World of Concrete is back!"



8-70 t

SYMMETRIC. SUPERIOR. ROBUST.

The fully automatic SQ-V quickcouplers from Lehnhoff are based on the S-standard with superior valve technology and some outstanding features:

- highest oil flow for maximum performance
- integrated depressurization unit
- reverse mode use of hydraulic attachments like crushing or tilting bucket



Visit us and learn more!



at the Komatsu booth W42044
and Montabert booth W42229
March 14-18, 2023
Las Vegas Convention Center



Contact US: ussales@montabert.com - Customer Service Line: +1 866 472 4373



NEW GPR SYSTEM FROM SENSORS & SOFTWARE

Sensors & Software, Inc. introduces the LMX150 Findar, a compact, high resolution ground penetration radar system for utility locating that provides locating and mapping capabilities to pinpoint the location of buried metallic and non-metallic utilities. This system features a compact cart (55 x 90cm, 19kg) allowing the user to transport to site and use the unit in confined areas, while still handling all field terrains the user may encounter in their daily work, according to Sensors & Software. The LMX150 Findar's intuitive user interface

makes it easy to collect and process data for immediate results in the field, according to Sensors & Software. The high-resolution GPR sensor is optimized for shallow utilities. Features include the line scan mode for collecting cross-sectional lines for reconnaissance purposes to pinpoint utilities and mark their locations; grid scan mode for collecting grids to locate utilities in complex areas, as well as collect lines around obstacles within the grid; 3D depth slicing for visualization of the position and depth of utilities; field interpretations;

MapView for visualization of the entire GPR survey; screenshots; and a geo-referenced output. It is possible to transfer screenshot images and GPR projects for archiving or post processing with the Ekko_Project GPR analysis and reporting software.

'Work Buddy' from TDBS, from the idea to completion

TDBS Handels GmbH has made it its primary goal to be constantly up to date, with development process optimisation - safety – being the company's engine for sustainable customer satisfaction. TDBS and its staff are passionate, innovative and adapted to the challenges of its clients' daily problems. The idea to develop something practical for the craftsmen on the construction site and in the workshop turned a simple testing device into an all in one multiple combination called Work Buddy, which is said to have been proved to be ideal when refitting worn out drill bit tubes.

At last year's bauma in Munich, the prototype of the Work Buddy was presented and demonstrated. The company says this was a 'great success', which subsequently boosted production and contributed to the further development of the all in one device. Using a cordless screwdriver, the easy to handle Work Buddy is brought into a rotational movement that allows the cutter on the opposite side to shorten the tube or remove wear from the pipe. Thanks to the precise mounting on the Work Buddy, the concentricity check is in the hundredths



range and ensures an optimally accurate reproduction. The connection of the laser for precise positioning of the drilling segment is just another highlight of this all in one device. At what distance and how many segments a tube needs comes from a special disc incl. engagement system. TDBS believes that its Work Buddy is a new star in the diamond tool sky.

MEET THE NEW **AQUA CUTTER 750V**



SEE US AT



**CONEXPO
CON / AGG**

Improvements

- » No pipe holes
- » Higher performance
- » Auto calculation for optimal settings
- » Aquajet precision drive
- » Extreme lance control
- » Patented Infinity oscillation system
- » No calibration needed
- » Remote start and stop
- » Boosted track speed
- » Auto distance recognition
- » Evolution 3.0 control system
- » Aquajet online





RAISING THE 'BAR' WITH BOOSTERS

While the pressurised air supplied through a standard compressor is more than sufficient for many industrial processes, certain applications require pressure levels to be taken up a notch. In these instances, adding a high pressure booster is the ideal solution.

As the name suggests, a booster 'boosts' or increases the pressure levels of a primary feed air compressor. Never a stand-alone product, it works in tandem with the primary unit by taking the air and passing it through additional compression stages, creating up to 10x more pressure. Atlas Copco, now offers boosters that can increase pressure from a standard unit to anywhere between 69bar and 345bar.

Versatility and profitability

There are air, nitrogen and gas treatment booster solutions for all high pressure applications, which are ready

to be integrated into a wide range of industrial processes. Designed to suit the most demanding of operations, they are particularly useful for deep geothermal, exploration and water well drilling, and pipeline testing. All Atlas Copco models are standard equipped with a lifting eye and forklift slots and weigh as little as 2,950kg, meaning they can be transported to even the most remote offshore projects with ease.

Using a booster that offers versatility is also key to avoiding wasted energy. Atlas Copco's Xc4004 smart air controller, for instance, enables users to easily define the booster's output pressure with a touch of the button.

In a high pressure drilling application, the drill speed can efficiently be increased, reducing the cost per meter drilled, thereby improving overall profitability. The modular design of the company's dual stage boosters also allows the user to change from dual to single stage, giving more control of the utilisation rate.

Maximum safety, minimum maintenance

The ease and speed of a booster's maintenance and servicing is impacted by the quality of its components, the tools needed, and the accessibility of maintenance prone components (such as the pumper block or the drain points). Atlas Copco boosters can be maintained by one service technician within four hours, as the standard components are easily accessible and do not require a crane or special tools.

Boosters should also include all necessary safety mechanisms – both visual and auditory – that adhere to legislative requirements. Atlas Copco's Xc4004 controller continuously monitors all vital parameters of the booster, and in case of pending failure, will protect the user's investment by automatically shutting the unit down to avoid damaging core components. The technology even indicates when preventive maintenance is required, maximising uptime.

These high pressure machines are ultimately much more than just a booster. And with a broad range of both standard and custom designed models available on the market, any demanding application can reap the benefits of integrating boosters into their compressed air packages, no matter how unique or tough the conditions.

BEBOSA IS BACK AGAIN!

Like many other tradeshow around the world, the pandemic has caused difficulties for the German concrete cutting show BeBoSa over the last few years, having to be postponed a couple of times already. But now the show will really happen again with the German speaking markets particularly looking forward to the show.

BeBoSa will take place in Willingen, Hochsauerland, Germany 23 to 25 March. Over 40 companies are at this point booked for the event. The majority of the exhibitors are manufacturers and sales companies from German speaking countries, but there are also a number of companies from France, UK, the Netherlands, Denmark, Sweden and USA.

BeBoSa will take place for the fourth time. At the last edition in 2017, 55 exhibitors, all leading companies in their fields, used the approximately 4,000m² exhibition space to present their products and innovations. A further 1,200m² of outdoor space was available for demonstrations of the latest technologies. BeBoSa 2023 will also take place within this framework. At BeBoSa catering is included for exhibitors and visitors. Only visitors with an invitation have access to the exhibition meaning that the quality of the visitors is very high.

The show's opening hours are Thursday 23 March: 2pm – 6pm, Friday 24 March: 10am – 6pm and Saturday 25 March: 9am – 2pm. During opening hours,



exhibitors can demonstrate the practical use of their products to customers on the outdoor area right next to the exhibition area. There is an additional programme for members of the German Concrete Drilling and Sawing Association.

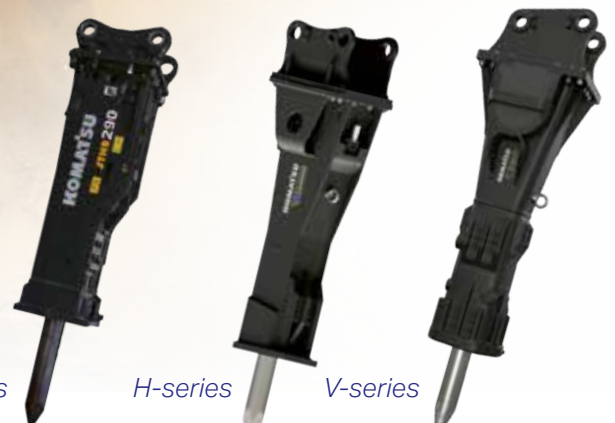
PDi Magazine will cover the show and a show review will be published in PDi 2-2023.

www.bebosa.com



Komatsu breakers

Komatsu hydraulic breakers provide superior impact energy in a variety of rock and concrete demolition applications: you can count on exceptional performance and efficiency whether you're scaling a tunnel, running a pedestal-boom on a quarry, or tearing out reinforced concrete masonry.



B-series

H-series

V-series



SIMEX – THE ROAD TO

ConExpo-Con/Agg 2023

The road to ConExpo-Con/Agg 2023 began for Simex in January 2021, when the first North American branch was inaugurated in Corpus Christi, Texas. Therefore, participating in North America's largest exhibition for the earthmoving sector will not only be an exhibition opportunity for the company, but it will also mark the beginning of a new strategic and commercial phase for Simex products in the US market.

The opening of the new Simex US branch office in 2021 has resulted in a stock of equipment and spare parts and, consequently, faster delivery times, prompt pre and after sales service, and onsite installations supervised by qualified staff.

At the same time, the expansion of the sales and dealer network has paved the way for Simex's participation at ConExpo-Con/Agg 2023, with the company now more aware of the market needs when it comes to doing business in the vast territory of the United States, with a clear strategy for penetrating the market.

The investment in the American market is the result of a broader expansion plan that started from its Italian headquarters, in San Giovanni in Persiceto, just outside Bologna. The Simex production plant now covers a total area of 54,000m², where a large amount of space is dedicated to testing equipment so as to ensure the highest quality standards. The new logistics warehouse of over 7,000m², inaugurated at the end of 2019, has

increased stock capacity and shortened delivery times. Among the many structural implementations are the automated vertical warehouses, robotic boring and



welding stations that enable the improvement of the quality of components, such as drums and cutting wheels, while ensuring high safety standards. And finally, a vast demonstration area that allows the R&D office to test and develop new products, simulating various fields of application.

Simex for the road maintenance and utilities sector

ConExpo-Con/Agg 2023 marks a change in Simex's approach to sales in the US market. From now on, the entire range of 'PL' asphalt cold planers and wheel saws from the 'RW' and 'T' ranges will be marketed, opening up a new direction in the field of road maintenance and underground utilities with over 30 models for loaders, compact loaders and excavators. Starting with the consolidated Simex milling technology, developed and fine-tuned over 30 years in the business, the entire PL line will be oriented to American road maintenance

operators, from 250mm to 2,000mm in width and up to 350mm in depth. In this regard, on the occasion of North America's biggest trade show in the earthmoving sector, Simex will provide focus on what it says is the widest road cold planer on the attachment market, the PL 2000, which, with its 200cm drum, can reach 4 milling meters in just two passes.

In the mini and micro trenching sector, Simex believes that its range of 'RW' and 'RWA' wheel saws will steal the show due to their special characteristics. These include the self-levelling system, which automatically adjusts to the surface; the segmented wheel (which makes it possible to quickly change the trench width, while maintaining the same base wheel) and the hydraulic lateral tilt of the RWA 500 model (to be showcased at the show), which keeps the cutting wheel always vertical, even when the prime mover is not parallel to the road surface.

Innovative skid steer equipment, designed for roadworks applications, will also be presented at Conexpo-Con/Agg. The D-Blade 200 is a floor saw with a diamond blade for cutting depths up to 200mm, with the range being created with the intention of incorporating asphalt diamond saw technology into skid steer loaders, ensuring increased safety for operators. As the name itself suggests, the Simex asphalt saw is ideal for linear cuts on road surfaces, for concrete, and for creating expansion joints on continuous surfaces. One of the most frequent uses of the 'D-Blade' is the removal of predefined sections of asphalt for subsequent restoration or for opening new road manholes. However, it is often used to make sharp cuts for laying fibre optic cables. The clean and burr free cut produces minimal waste material and avoids trench deformation, facilitating the filling phase and ensuring restoration quality.

Simex also aims to be at the forefront of the development of new solutions for mini and micro trenching. 'No-dig' technologies are a set of techniques ideal for relining, repairing and the renewal of underground utilities networks, minimising the impact on roads and pavements. Simex now offers for the US market 15 models of wheel saws specifically designed for reduced set section trenches. The attachments are included into four product ranges: RW, T and D-Blade for loaders and skid steers, and 'RWE' for excavator boom mounting.

Simex for demolition and recycling

In recent years, Simex has made efforts to offer useful solutions for materials recovery from a sustainable perspective. From crushing to selective separation, from cutting to controlled demolition, from quarrying to backfilling pipelines, Simex has a range of buckets and drum cutters that facilitate demolition and the recycling of waste material. Simex aims to expand the concept of materials recovery which, once crushed, volumetrically reduced or screened, can be recycled immediately onsite or easily transported away.

In this regard, at ConExpo-Con/Agg there will be a thematic area dedicated to Simex buckets for demolition and recycling purposes. The 'VSE' range of screening buckets has an exclusive patent for the instant variation of the output size of the screened material. Another patent is the new 'FIT' screening tools. These are easily customisable and replaceable directly onsite, and aim to guarantee up to 75% less maintenance costs when compared to the previous system. At the Simex booth, it will be also possible to see the 'CBA' asphalt granulator bucket, designed for the volumetric reduction of asphalt slabs to a certifiable grain size, due to its configurable

rear grid. The CBA bucket has been specifically designed for the recovery of milled asphalt material, classified in national regulations as bituminous conglomerate granulate (otherwise known as RAP - Reclaimed Asphalt Pavement). It has the dual advantage of combining reduced construction site costs (less supply of new raw materials) and the possibility of reintroducing the milled material into the production cycle of new asphalt. The line-up is completed by the 'CBE' rotor crusher buckets range which has been developed for the volumetric reduction of aggregates directly onsite. It is said by Simex to be high performing even in the presence of rebar and other troublesome materials.

In the central part of the booth the 'TF' double drum cutter heads will stand out.

Among the most versatile attachments in the range, Simex drum cutters cover a wide area of applications, ranging from trenching in the road sector, passing through the vertical profiling of concrete or rock walls in the construction and infrastructural field, up to the heaviest uses for quarrying or tunnelling. TF drum cutters and 'MP' cutter heads for profiling are used in the selective removal, at controlled depths, for tunnel rehabilitation projects. In order to remove deteriorated concrete, to scarify shotcrete bumps or to mill industrial floors, as well as for those jobs requiring a high finishing level, Simex equipment for excavator booms can work on horizontal, vertical or sloped surfaces.

In order to see the Simex offering at ConExpo-Con/Agg, please come to the West Hall, Booth W43273.

Senya Crushers
JAW CRUSHER, SCREEN PLANT, CONVEYOR

THE MICRO PLANT

now **MADE IN USA**

ROAD LEGAL, EASY TO TRANSPORT
UNMATCHED PRODUCTIVITY
ELIMINATE DEMO HAULING & DISPOSAL
ELIMINATE AGGREGATE PURCHASES & TRANSPORT

Free Aggregate for Life!
pays for itself in months!

LEARN MORE ABOUT YOUR ABILITY TO WIN MORE BIDS
PORTABILITY • RELIABILITY • AFFORDABILITY • PROFITABILITY

SenyaCrushers.com
919-323-4830

ADAMAS
DIAMOND TOOLS

Toekomstlaan 9 - 2200 Herentals - Belgium
Aartsdijkweg 19 - 2676LE Maasdijk - The Netherlands

YOUR BRILLIANT PARTNER

WWW.ADAMAS.PRO



SPOTLIGHT ON SUSTAINABLE TECHNOLOGIES AT

bauma Conexpo India

Even after the pandemic related break, India is still a major player in the Construction machinery sector. Thus, bauma Conexpo India, which took place from 31 January to 3 February, 2023, at the India Expo Centre, Greater Noida / Delhi NCR, closed with impressive results: a total of 601 exhibitors from 26 countries and 41,108 visitors from 83 countries came to its 6th edition.

During his inaugural address, Shri Nitin J Gadkari, Honourable Minister of Roads Transport & Highways, Government of India, stated: “Electric, hybrid, and biofuel compatible machinery holds great potential to reduce the fossil fuel dependence of the construction equipment industry and improve productivity and cost efficiency outcomes for the infrastructure development and construction industries. Hence, I am delighted to see the new technology displays at this trade fair.”

Arvind Garg, chairman, bauma Conexpo India, and senior executive vice president and head of Construction & Mining, Larsen & Toubro Ltd, added: “Infrastructure development in India is on an accelerated growth path, and we are proud to serve the market with best in class latest technologies which enable timely project completion and better outcomes for all stakeholders. Hence, we are delighted with the vibrant participation and representation of the entire infrastructure development ecosystem at this forum.”

The show brought together the expertise of the world’s top two construction equipment trade fairs:

bauma and ConExpo/ConAgg. A successful concept, as Jaideep Shekhar, managing director, Terex India, confirms: “There have been quality footfalls at our booth and meetings with key customers for all products, especially our rough terrain cranes. This edition has been a high energy inspirational experience for our entire team.” An assessment that Piero Guizzetti, CEO, MB India agreed with: “This edition was by far the best one. We are completely satisfied with the show as we have received excellent footfall. We saw visitors who were curious and visitors who wanted to concretely transact with us.” Sudhakar P. president Concrete Products Exports, Schwing Stetter added: “We have participated in all the editions of bauma Conexpo India. It is the right place to be at.”

This was also true for the visitors of this trade fair, as Arvind Patel, managing director, Patel Infrastructure and chairman, Gujarat Contractors Association, points out: “This trade fair has proved once again why it is an unmissable opportunity for developers. We have had good meetings and fruitful discussions for the future of India’s technology empowered construction industry.” Dimitrov Krishnan, president, Indian Construction Equipment

Manufacturers’ Association (ICEMA) and managing director, Volvo CE India, added: “The main highlight of this show has been the strong interest in sustainable technologies and manufacturers’ initiatives to cater to this surging demand through innovative product launches.”

Speaking about the curated programmes, Niimesh Patel, president, Builders Association of India (BAI), pointed out: “The construction equipment industry contributes towards nation building by supporting project contractors and contracting companies to execute and deliver infrastructure projects on time. The all India contractors meeting at this trade show was a success in terms of important discussions among representatives from all parts of the country.”

Expressing gratitude to all stakeholders who made the show a success, Bhupinder Singh, CEO, bauma Conexpo India concluded: “We measure our success by the scale of our customers’ success and the opportunities that were unlocked at our platform. On this metric, we are delighted to close this edition on a high note.”

The 7th edition of bauma Conexpo India will be held in December 2024.



XCENTRIC CRUSHER SERIES 'E'

You will crush your wet material using our **CROSS JAW** system



XCENTRIC CRUSHER SERIES 'A'

OUTPUT SIZE SELECTION
never was easier

XCENTRIC

The high frequency vibration (**POWERBOOST**) increases the screening performance

XCENTRIC SCREENER



It combines the benefits of a hammer and those of a conventional ripper. **IMPACT TECHNOLOGY**

XCENTRIC RIPPER



WANT TO JOIN THE XCENTRIC WORLD WIDE DEALER TEAM?

- ✓ Have you got what it takes to be an Xcentric dealer?
- ✓ Do you give all your clients a service experience that is second to none?

If your answer was **yes** to all the above then
SEND YOUR INTEREST TO: info@xrint.es

Contact us:



www.xcentricripper.com

BATTERY HYDRAULIC CRIMPING TOOL FOR DIAMOND WIRE



Impressive crimping force of 5.5 tons and a 5 second crimping time

Compatible with all types and sizes of diamond wire

360 degree swivel crimping head

Single handed, push-button control for easier working

Ergonomically designed, weighing only 3kg/6.6lbs

High performance 18V Li-ion battery with a 2 hour charging time



Comes complete with plastic carry case, one charger, two batteries and two crimping die



Efficient quick release opening of crimping head



Powerful cutting die sets also available for purchase



DYMATEC

SPECIALIST PRODUCTS FOR DIAMOND DRILLING & SAWING

01582 599 933
sales@dymatecuk.com
www.dymatecuk.com

866 734 1871
sales@dymatecusa.com
www.dymatecusa.com



SIXTEEN CATEGORY WINNERS

and a design award

Various solutions will be in the limelight at SaMoTer from 3-7 May at the Veronafiere Exhibition Centre.

“The main focus of SaMoTer 2023 is on innovation, and in particular two topics of great importance: the ecological transition and the digital transition,” said Maurizio Danese, CEO Veronafiere. “We are delighted to see that the competition awards have also taken this direction. We are preparing the new show which, thanks not the least to SaMoTer Lab and Cantiere Digitale (The Digital Construction Site), will turn the spotlights on to the real and effective implications of new technologies, automation and digitalisation.”

The winners of the competition were presented with their awards at a ceremony for the International Technical Innovation Competition and SaMoTer B2Press, a networking event for exhibiting companies and journalists, which acts as a stepping stone towards the 31st edition.

“The Innovation Award has two objectives: to acknowledge investments made by companies to develop cutting edge machinery and technologies, and to provide sector operators and the trade press a chance to learn about the latest developments,” stated Sara Quotti Tubi. “It is a qualified showcase focusing on technical and technological evolution in the construction machinery sector. Competition entries included machinery, equipment, plant and prototypes characterised by new design and/or practical innovations in use, as well as fundamental improvements to existing machines.”

“I was delighted to see that the SaMoTer Innovation Award attracted impressive participation even by leading global manufacturers, who are always keen to gain ground in terms of competitiveness,” said Costantino

Radis, sector journalist and chairman of the jury for the SaMoTer Innovation Award. “This once again confirms SaMoTer’s vocation as a platform for international promotion capable of accompanying and supporting progress in the sector.”

The jury of university professors, researchers, technicians and sector experts of proven experience included Costantino Radis, technical journalist (chairman), Maurizio Quaranta, IPAF representative for Italy, Massimo Bardissone, mechanical engineer, Cristiano Costa, technical service manager with Unacea, Enrico Lovera, building contractor, Jean Noël Onfield, technical journalist, Sebastiano Pelizza, professor emeritus, Marco Prosperi, general manager of Assodimi, Alberto Seco, industrial designer, Daniela Grancini, technical journalist and Lucas Manuel Varas Vilachán, technical journalist. The jury announced sixteen winners this year in the

categories of hydraulic excavators, telehandlers, lifting machinery, plant, attachments, software applications and other machinery. A design award was also made.

The winners of the SaMoTer Innovation Award

Develon was the winner of the hydraulic excavator category with its 14W EREV. Wacker Neuson won the compact telehandler category with its TH412e. Merlo was the winner of the medium telehandler category with its 30.7. Magni won the rotary high capacity telehandler category with its RTH 10.37. Airplatform won the platform lifting machine category with its ‘Up&Down’ TB22-9. JMG won the mobile cranes category with its MC-250.09FL. Blend was the winner of mobile plants category with its C022. Ghedini Attachments won the demolition hammer category with its EPB 48. Mantovanibenne won the demolition and recycling attachments category with its SH600R ‘Eagle’ 3. Simex won the road maintenance attachments category with its ART 1000 ‘Asphalt Repair Technology’. Malaguri won the utilities attachment category with its ‘Variable Vibration Device’. Minitop won the track loader applications attachments category with its ‘Tracksformer’. Maestro won the software applications for plants category with its ‘Q-Pilot’. Hidromek won the software applications for operating machines category with its ‘Opera’. Hidromek also won the special design prize. Kato Imer won the track laying transporter category with its ‘Carry’ 107 EP and Carry 105 EP. And finally, Rotair won the utility ‘Other Machines’ category with its MDVN32B and MDVN32E.





The new diamond disc saw TS40 LH from Weka designed for left handers

The diamond cutting saw TS40, which has been established on the market for many years, is designed for versatile and tough use on a wide variety of materials. The existing design of the cutting saw has now been adapted in such a way to create a saw for left handers, namely the TS40 LH.

Hand saws for left handers are niche products, as the manufacturers often do not react to the existing need due to the lower demand. The advantages these provide for the user include improved handling, safety and possible uses include that the modified arrangement of the motor and blade guard for optimal handling for left handers and thus offers more stability when guiding the saw with less fatigue at the same time. The left hand arrangement of the blade guard results in new and improved application options as left sided cuts, e.g. on door or window reveals, can now be optimally executed, especially in combination with the new Weka flush blade guard for cuts close to walls. Especially for such applications, the TS40 LH is a real alternative for right handers also.

The TS40 LH is driven and controlled using the water cooled FU6D frequency converter. As a universal drive unit, the FU6D can power all saws in the 'Anna' and 'Emma' series, as well as the high frequency drills HD16 and HD18. The TS40 LH is a useful expansion of the Weka high frequency series and is designed to offer both left and right handers more safety and new application options.

Meet Dynaset's global sales manager Perttu Mäkinen

The Dynaset team has got reinforcements in the sales department.

The latest addition to the team is Perttu Mäkinen, who started as a global sales manager in the autumn of 2022. But who is he? We gave the pencil to him, and in this article, you will learn what kind of guy he is.

So, who are you?

My name is Perttu Mäkinen, and I have worked in my family company since I was thirteen. In my twenties, I started working at Nokian Heavy Tyres in shift work, and at the same time, I started at a high school in Tampere. I have always had a passion for the English language, so it was natural to continue my studies in English, majoring in sales, marketing and leadership. I graduated with a BBA, and my MBA is at the thesis stage. I also have a postgraduate degree from Henley Business School in England. For the past 15 years, I have worked in different management positions in international tyre companies.

I spent my childhood in the countryside and wanted to give my children the same experience. When I took my lovely wife Katri, whom I met when I was 19 years old, to see our current house, she asked me multiple times to turn around while driving there. It was a cold February day, and the streets were flooding slush. Once we got there, we knew immediately that this would be our new home. A home for me, Katri, our daughter Miiri, age twelve, son Miklas, age 10, and of course for Ghost, our ragdoll cat. This same place is where I still charge my batteries. I have a home office filled with old books and vintage items. I'm fascinated by history and read a lot of related literature. I've had my home in Ylöjärvi since 2005, and I will never leave!

How have the first six months been?

The recruitment process was long, but I felt I needed to follow this process through to the end. Also, I was very excited by Dynaset products because the industries where we sell them are almost identical to the tyre industry, albeit from a different perspective. I was excited to join the Dynaset Team. Starting at the production level for the first two weeks as part of orientation was an excellent way to get inside the company. Through that, I was able to familiarise myself with the products and get to know the people who make us tick. I had a very warm welcome and met a lot of satisfied employees who clearly appreciated their work and Dynaset as an employer. After that, I got even more enthusiastic about what I had become a part of!

And what do you do in the team?

I came to lead the sales, which for me means developing the processes and sales channels, improving customer experience, and supporting my very experienced team so they can achieve their best in their work.

How does it feel now?

I had a long career in the tyre industry and felt that moving to another industry at this stage was the correct

move. Every single day I have been happier that I was given this opportunity. Folks at home have also noticed that they have never heard me saying such positive things about my work as nowadays. It greatly impacts my well-being to be able to go to work every day with a smile.

How about your free time?

I like to cook; it is my passion. Our family has special diets, and the children's favourite food is macaroni and butter, which only dad can make properly. Last summer, I learned to make pizza on the grill, which was not that easy, and the pizza shovel got thrown in the forest several times. The funniest thing is that I can cook several dishes during one day without eating any of them myself. My delicacy is dried rye bread and milk that we must always have available. If I can't sleep, I eat a piece of that bread and drink a big glass of milk.

My favourite season is autumn, as the weather cools down and the forests are filled with mushrooms. I am a very enthusiastic mushroom forager; the longest trip took six hours. Albeit, one of the reasons for this long trip was that I got lost. When I focus solely on finding the mushrooms, I ignore my whereabouts, leading to some funny stories. I also like to fill out crossword puzzles. My family members support me by folding out the crossword pages from newspapers for me on the table so I can fill them out. I often buy the evening papers just for the crosswords and typically never read the articles in them.



Perttu Mäkinen and his wife Katri Mäkinen. The family has always been the number one thing to Perttu.



DON'T LET THE EQUIPMENT LIMIT YOUR POSSIBILITIES!



Our Hydrodemolition Robots 557 MPA and MPA XL offer ultimate versatility without sacrificing any productivity.

COME MEET US AT **CONEXPO!**
MARCH 14-18 LAS VEGAS CONVENTION CENTER
CENTRAL HALL, BOOTH C32575

Conjet Inc. | 3400 Int'l Airport Dr., Ste 100 | Charlotte, NC 28208 USA



conjet.com



The ultimate solution

The new 'WSL-Ultra Fast Cut Blade' from Tyrolit is said by the company to be the ultimate solution for cutting concrete with low abrasive aggregates and increased reinforcement.

When it comes to wall sawing, Tyrolit says that it has been the first choice for concrete drilling and sawing professionals for decades. Within the broad assortment for wall sawing, users find a wide range of machines and tools for various applications and concrete aggregates. In order to extend this range, the manufacturer recently launched the WSL-Ultra Fast Cut wall saw blade, a tool specially developed for the fast cutting of concrete with a very high degree of reinforcement and low abrasive aggregates. The blade is recommended for normal feed depths and is available in diameters ranging from 600mm to 1,200 mm. Laser welded segments in TGD technology has been developed to ensure consistently fast, yet smooth cutting. The WSL-Ultra Fast Cut wall saw blade is said to be the perfect companion for the best-selling WSE1621 wall saw, but it can also be used with other machines of up to 20kW (electric and hydraulic).

The Tyrolit Group

Tyrolit is one of the world's leading manufacturers of grinding and dressing tools as well as a system provider for the construction industry. With roots in the heart of the Austrian Alps, Tyrolit combines the strengths of family values with a global vision and over a century of individual corporate and technological experience.

Genesis Attachments showcases the new GDT 890

Genesis Attachments formally unveiled the new GDT 890, the largest 'Razer' demolition tool, at the National Demolition Association Convention.

Fitting larger excavators, the GDT 890 features a 1,625mm jaw opening, 1,574mm depth and over 3,960mm reach, making it ideal for large, high reach demolition projects. In addition to high reach demolition, the GDT, now available in five models, is designed to be a versatile tool for jobs of different sizes and applications, including general and bridge demolition, concrete recycling, and C&D processing. This is due to its short, flat top head with a bolt on bracket that simplifies installation and switching between excavators. Customers can also select from several arrangements of



reversible crushing teeth to further configure their GDT 890 for optimal material processing.

The new GDT 890 Razer will also be prominently featured at Genesis' ConExpo booth: C- 30034, 14-18 March in Las Vegas.



Ausa plans major showcase at Conexpo

The manufacturer of compact all terrain industrial vehicles will be present at ConExpo-Con/Agg, with its booth being located at the outdoor Festival Grounds stand F9576. Here it will be exhibiting a wide variety of its equipment.

Machines from all of AUSA's product ranges - dumpers, rough terrain forklifts and telehandlers - will be exhibited at the Las Vegas show. AUSA will be presenting its recently launched D151AEG electric dumper, which has a 1,500kg payload and swivel skip. Its new 100% electric technology provides sufficient range for a complete and intense shift, and it can be charged directly via 110V or 230V sockets, taking just two hours to charge from 20% to 80% (230V).

The DR601AHG reversible drive dumper will also be on show, presenting its 6,000kg capacity and swivel

skip along with its reversible driver's seat, meaning the vehicle can always be driven forwards for better visibility and safety. Apart from these two models, AUSA will also be presenting its 3,500kg capacity D350AHG dumper, the 2,267kg and 5,000kg capacity C251H and C501H rough terrain forklifts, and the T235H telehandler, with a 2,267kg payload and a maximum lift of 5m.

www.ausa.com



THE ALL NEW 'LAVINA' S7 GRINDERS FROM SUPERABRASIVE

Superabrasive is pleased to announce the launch of its all new Lavina S7 grinders. The S7 machines have a completely new design and features that have been developed to assist contractors' work easier and more efficiently than ever. The grinding head is now completely sealed and dust proof for longer service life and less maintenance.

A redesigned chain driven planetary drive, new stronger timing belt, upgraded shafts and pulleys are just some of the changes that have been designed to take these grinders to the next level of operability and reliability. The new frame design with upgraded weights and handle allow for better control, easier tool changes, and less vibrations.

The first S7 machines, 25" and 30" propane and electric models, will be available in the 2nd quarter of 2023, with more sizes to follow later in the year.



SYNTEC™
DIAMOND TOOLS

Leaders in Diamond Tool Technology
BLADES | CORE BITS | SURFACE PREP



HIGH-PERFORMANCE DIAMOND TOOLS



WEBSITE



WHETHER CUTTING, DRILLING OR GRINDING - WE'VE GOT YOU COVERED!

Worldwide Distribution Network | pdisales@syntecdiamond.com | +61 8 8102 0115

*Dry core drilling
in reinforced concrete
with UNIX² and BETO.*

**KERN
DEUDIAM.**

*DTDX
100% cobalt-free
diamond segments
Made in Germany.*

**GIVE IT
A DRY.**

KERN-DEUDIAM.DE
MADE IN GERMANY.
SINCE 1977.



EXCELLENCE IN FLOOR PREPARATION

Innovation is said by the company to be a trademark of Lissmac. With the series of floor grinding and floor milling machines presented for the first time at bauma 2022, the company is adding a new product field to its range.

“As a leading manufacturer of floor saws, stone saws, wall saws, wire saws and core drills, we know how to build machines that reliably deliver top performance under the toughest conditions. Our new grinding and milling machines cover exactly the needs of professionals in floor preparation,” says managing director Daniel Keller. Six grinding machines and three milling machines now make up Lissmac’s powerful new product family, designed for a wide range of tillage tasks from quick fix repairs to demanding large scale operations. At the start of production, a comprehensive selection of tools is already available that are precisely matched to the machines and their intended use being developed to ensure maximum efficiency and reliability. The all in one range is rounded off by the ‘Vacuum-Dry’ industrial hoovers in two performance levels. Equipped with Hepa filters + PTFE, they meet dust class H and achieve air flows of 340m³/h and 510m³/h respectively.

Smooth and non-slip the new ‘BSM’ floor grinding machines

With six models ranging from 2.2kW to 11kW of high torque electric power and with working widths of 270mm to 650mm, the floor grinding machines from Lissmac handle the majority of tasks that arise in professional floor preparation. The Lissmac diamond tools, which are carefully matched to the machines in different grit sizes and segment hardness, are designed to produce first class surfaces on floors such as concrete, screed or terrazzo and have long service lives. The stick roller system creates a roughened surface similar to shot peening. High quality visible surfaces can be created or renovated in a short time with the diamond polishing pads. The Lissmac ‘PCD’ tools

are designed to effectively remove adhesives, paints or coatings from surfaces.

The handy floor sanding machine BSM 270 E with a 2.2kW 230V motor and 270mm working width has been developed to be a nimble all-rounder for the high abrasive subfloor preparation of floors. Of a light weight and designed to be highly powerful and fast, is the BSM 310 E with a particularly durable brushless 230V motor, 310mm working width and 38kg operating weight. The BSM 340 E with its speed regulated, 5.5kW 400V motor and 340mm working width, is recommended for coarse work with high removal rates. It has been developed to provide an economical solution in all cases. Equally efficient for dry applications is the BSM 450 E three disc sanding machine with a 450mm working width and 230V motor with 2.2kW. The BSM 525 E with its speed regulated, 7.5kW 400V motor, trimmed for maximum performance, is designed to provide the ideal solution on when it comes to demanding dry and wet sanding. The working width of the three disc sanding machine is 525mm.

Lissmac says that flagship performance on a 650mm working width is delivered by the BSM 650 E with 11kW engine, which is designed to powerfully pull through the adjustable speed even on rough jobs. The weight of the heavy floor grinder is optimally balanced for high stock removal and energy saving operation during long operations. All Lissmac floor sanding machines are characterised by the fact that they are also ideally suited for work close to walls.

Good from the ground up - the new ‘BFM’ floor milling machines

With cracks, blisters, chipping and increased susceptibility to weathering, the costly consequences of inadequate substrate preparation inevitably come to light sooner or

later. The new Lissmac floor milling machines have been designed to produce a high adhesive tensile strength on concrete and screed surfaces and thus prepare the load bearing basis for further floor construction. The powerful and robust machines compensate for height differences of up to 8mm and efficiently remove adhesives, paints as well as foam residues from floors. Three practically graded machine sizes deliver solid performance day after day on 200mm to 320mm working widths. The Lissmac tools, which are precisely tailored to market requirements, are said by the company to have an attractive price performance ratio, ensure first class surface quality and guarantee long tool lives.

The BFM 200 E is designed to be a compact universal machine; as well as being easily managed, the machine is said to impress with its performance and durability. Driven by a 2.2kW 230V motor, it achieves milling depths of up to 2mm with a working width of 200mm. The BFM 250 E is still compact and easy to use, but Lissmac states that it offers a whole new performance class. Its 4kW 400V motor provides the power and endurance for demanding applications with a maximum milling depth of 5mm over a working width of 250mm.

The BFM 320 E has been specifically designed for deal with large areas and the most demanding tasks and is the largest floor milling machine from Lissmac. It has a working width of 320mm, which can be converted to a diamond milling machine with 24 diamond blades in a short time. Driven by an 11kW 400V motor, it mills up to 8mm deep on concrete C20/25 in one operation. Equipped with a stepless hydrostatic drive for forward and reverse travel, the ergonomically designed machine protects the operator’s strength during continuous operation.

www.lissmac.com



Powerful performance. Application versatility.

MOBISCREEN MSS 802 EVO



MSS 802 EVO



Visit us at: Silver Lot S5020
March 14 - 18, 2023 • Las Vegas
www.wirtgen-group.com/conexpo

IMPRESSIVE FROM A TO Z. Thanks to its robust design and extensive range of screen linings, the MSS 802 EVO can easily adapt to changing locations and new operating conditions - making it ideal for a wide variety of applications. The coarse screening plant features an intuitive system control that reduces the risk of operating error. And all relevant functions can be operated from a safe distance for increased work safety. The MOBISCREEN MSS 802 EVO - the heavy-duty, versatile solution in natural stone and recycling.

 www.wirtgen-group.com/kleemann



UNLOCK YOUR EXCAVATOR **EFFICIENCY**

SQ90

Fully automatic Quick Coupler

- ✓ Compliant with the Open-S standard
- ✓ Upgraded Front Pin Lock safety solution
- ✓ Hydraulic couplings with Qplus technology



STEELWRIST
EARTHMOVING EFFICIENCY

www.steelwrist.com



Ukrainian contractor executes challenging underwater project

In a war torn Ukraine, specialist concrete cutting contractor, TEM Diamond, based in Kyiv, performed a unique project involving the wall sawing of underwater concrete structures at the Kyiv reservoir. Andrei Bushmarin reports.

The Kyiv reservoir is a large water body located on the Dnieper River in Ukraine. When one of the piers along the waterfront required renovation, the local authorities contacted TEM Diamond to perform the cutting of its underwater structures. At first, the task seemed insurmountable because it involved demolition of a monolithic slab made from extremely hard reinforced concrete. After some deliberation, TEM Diamond decided that the only viable solution was to use a Hilti DS TS 32 hydraulic wall saw. The thickness of the slab varied from 300mm at the waterline to 580mm below water. The biggest challenge was doing the cutting underwater at a depth of between 0.5m to 3.5m. Visual control of the operation was impossible so the contractor had to rely only on its experience and professionalism.

Successful execution

Before setting up the wall saw, the pier floor was de-sanded using a water pump. Professional divers were contracted to fix the wall sawing system onto the concrete structure. The sawing process was regularly interrupted to check the depth of the cut. The pressure that water put on the diamond blade slowed down the cutting process, particularly when the blade was half above water. Once the underwater structures were cut into 8t to 10t blocks, 200mm holes were drilled in them at a depth of 1.5m. A Ø30mm wire rope was passed through the holes and hooked to a floating crane. The crane tore out the particularly challenging first section with a force of 70t; the remaining slabs were demolished with a force of 20t to 50t.

On this project TEM Diamond used a Hilti DS TS 32 hydraulic wall saw with a power rate of 32kW, 1,200mm and 1,600mm diamond blades featuring 'Arix' segments, a 5kW core drilling system and 200mm core drills also equipped with Arix segments. The volume of concrete structures cut totalled 130m, with the equipment working underwater for 53h. The job was completed on schedule to the full satisfaction of the specifier.

www.tem-diamond.com.ua









AIRTEC Ltd. - Industriestrasse 40
CH-4455 Zunzgen / Switzerland





MBI company

Mantovanibenne is the head company of the multinational MBI Group, which was founded in 1963 in Italy. It specialises in designing, manufacturing and marketing attachments for the construction, demolition, recycling and earth moving industries. Today, after 60 years of success, the company owns an extensive range of products utilised by some of the biggest construction and demolition contractors around the world.

Mantovanibenne states that it is one of the most representative equipment manufacturers not only in Italy but, in general, in the world of demolition. The company from Mirandola, is unique in the sector because it sees three generations of the Mantovani family working together. Expertise and innovation are said by the company to be its fundamental characteristics. In fact, it says that its huge experience in the industry and long term relationship with customers are two of the most important drivers of effective innovation. Mantovanibenne infused this innovative spirit in the entire MBI Group, which is working as a unique entity to develop the attachments of the future and increase its manufacturing capacity to confirm MBI as a landmark in the industry.

New 'Eagle' shears 3

Mantovanibenne presented for the first time at bauma 2022 the Eagle shears 3, the new generation of shears to work in any conditions and without compromise. This year a new model takes off, the new SH600R Eagle 3, a 6.3t shear for 55t-70t excavators, and is said to be in high demand and will be presented in spring at the next SaMoTer fair in Italy. It was the winner of the SaMoTer Innovation Award 2023, in the Attachments, Demolition and Recycling category.

The Eagle shears 3 are believed by the Italian company to be a game changer in the demolition and recycling industry as they provides numerous benefits to those who use them. One of the primary strengths of the Eagle shears 3 is versatility. The attachment can be used for a wide range of applications, including demolition, scrap processing, and metal waste recycling. The Eagle shears 3 are also designed with precision in mind. The jaws are capable of opening and closing with great accuracy, allowing operators to make precise

cuts and minimise waste. This precision is particularly useful in situations where the space is limited, and the operator needs to be careful not to damage surrounding structures.

The shears have also been built to last. They are made from high quality materials that can withstand heavy use and harsh working conditions. This durability means that the attachment requires minimal maintenance that reduces downtime on the job site. Furthermore, the Eagle shear 3 is designed to be efficient. The new geometry allows it to cut through even the toughest materials quickly, reducing the time needed to complete a project. This efficiency not only saves time and money but also increases productivity, allowing construction companies to take on more projects and grow their business.

The technical characteristics of Eagle shear 3 are said to be a shorter frame, a unique weight to perfor-



mance ratio and greater stability making the range the ideal solution in any situation, without compromising on productivity. The line, in fact, has been designed to increase the cutting force on all models and the new design of the mouth allows an opening up to 9% larger. The jaws are cut with a high pressure water jet to avoid possible weakening due to high temperatures; the upper jaw has been completely redesigned to operate with high levels of stability, and made from a single element without welding. The line is equipped with a new type of interchangeable piercing tip that offers greater protection and reliability, with easier maintenance, reduced operating costs and downtime. The blade seats are milled from the solid to increase resistance.

The cylinder is inverted to protect the rod inside, whilst the enlarged bore develops more power by accelerating the cycles (opening and closing speed). The rod is forged from the solid, thus says the company ensuring superior resistance when compared to a conventional cylinder, and is equipped with premium quality seals that can last over 3,000h. The most heavily used parts are armoured with interchangeable Hardox 500 steel plates installed on the jaw profiles to avoid frequent maintenance operations that could affect the operational readiness of the shear. The armouring allows the shear to resist any impact without altering their structure, maintaining a very high level of wear resistance.

Mantovanibenne believes its Eagle shears 3 are an excellent investment for anyone in the construction industry. Their versatility, precision, safety features, durability, and efficiency make them a valuable tool for a wide range of applications.

All the details of the new generation of Eagle 3 shears can be consulted on the dedicated website <https://eagleshears.com/en/attachments/sh-eagleshears-3/>



HPW-DUST HIGH PRESSURE DUST SUPPRESSION

POWERED BY HYDRAULICS

HPW-DUST

HIGH PRESSURE DUST SUPPRESSION SYSTEM

- THE MOST EFFECTIVE DUST CONTROL
- TARGETED WATER MIST
- DOESN'T WET THE WORKSITE
- OPTIMAL WATER CONSUMPTION
- EASY TO USE FROM THE JOYSTICK
- EASY INSTALLATION
- WASHING GUN WITH HOSE REEL
- DOUBLE DUST BOOSTING SYSTEM AVAILABLE

CONEXPO-CON/AGG

STAND F8038
FESTIVAL GROUNDS

STAND N12563
NORTH HALL

HYDRAULIC EQUIPMENT FOR MOBILE MACHINERY

GENERATORS
VARIABLE GENERATORS
WELDING GENERATORS
MAGNET GENERATORS
MAGNETS
INSTALLATION VALVES

POWER WASHERS
STREET WASHING UNITS
PIPE CLEANING UNITS
DUST SUPPRESSION
DRILLING FLUID PUMPS
FIRE FIGHTING SYSTEM

AIR COMPRESSORS
BIN WASHING SYSTEM
POWER BOOSTERS
POWER TAKE-OFF
VIBRAS
ETC.



DYNASET.COM

Pentrunder[®] RS2

Revolutionary one-of-a-kind integrated motors

Integrated 18 kW drive motor

Efficient slip clutches for all motors

Two integrated brushless feed motors; one for the saw arm rotation and one for travelling along the track

Both feed motors can be used at the same time

Designed with the customer in mind

The Pentrunder RS2 saw head weighs less than 25 kg

IP65

Blade rotation in both directions

Light weight, easy to fit blade guard

Best protection and handling

One connector and cable only

Only standard hand tools needed for maintenance

Shorter setup times

Quick disconnect coupling for blade

Easy fitting of blade

Pentpak 3

IP64

Light weight, compact and durable

Same track system as all other Pentrunder machines

Highest stability and best handling

Easy assembly of saw on track

Same track feet mounting distance as for the HF- saws

Pentrunder[®]
CONCRETE CUTTING SYSTEMS

Pentrunder - designed and manufactured by:
Tractive AB | Gjutargatan 54 | 781 70 Borlänge | Sweden
www.pentrunder.com | contact@pentrunder.com