

Shows
**RECOVERY
MODE AT WOC**
Pages 50-54

Special feature
**A RE-TIPPING
POINT**
Pages 56-58

Reports
**COMPREHENSIVE
EQUIPMENT FOR
ADVANCED CORE
DRILLING**
Page 60

Special Feature
**LATEST NEWS FROM
THE FULLY AUTOMATIC
QUICK COUPLER SECTOR**
Pages 22-28

Special Feature
LOAD STARS
Pages 30-36

Reports
**DEMOLITION IN
INDIA GETTING
SLOWLY BACK
ON TRACK**
Pages 40-42

A BUCKETLOAD OF VALUE

Pages 44-45

Shows
*Conexpo-Con/Agg 2023
opens call for education
session ideas, page 63*

News
*New release from
Aquajet Systems,
pages 64-65*

Reports
*Sonmak Diamond Tools,
a Turkish recipe for
success, pages 46-47*

SPECIAL FEATURE ON HANDHELD EQUIPMENT FOR CONCRETE CUTTING AND DRILLING, PAGE 68

Concrete and steel in one go.



United. Inspired.

Cutting edge.

Our highly dependable Combi Cutters feature two powerful hydraulic cylinders and speed valves for a short cycle time. Heavy-duty industrial demolition, cutting steel profiles and secondary reduction – they can basically handle whatever is in front of them.

epiroc.com





ONLY WIRE

WIDECUT

18:19



**BEYOND EXPECTATION
ONLY WIRE !**



Groove



Ø15.0*40 bpm

Steel



Ø10.2*48 bpm

Concrete



Ø10.5*40 bpm

Finish



Ø9.0*48 bpm

www.widecut.com



Professional Demolition International Magazine

Address: P.O. Box 786,
SE-191 27 Sollentuna, SWEDEN

Visitors address:
Skillingevägen 14A, SE-192 71 Sollentuna, SWEDEN

Phone: +46 8 631 90 70
E-mail: info@pdworld.com
Website: www.pdworld.com
ISSN Registration: ISSN 1650-979X

EDITORIAL STAFF

Editor-in-Chief
Jan Hermansson, Jan.Hermansson@pdworld.com

Assisting Editor-in-Chief
Anita do Rocio Hermansson,
Anita.Hermansson@pdworld.com

Editor: Vitor Hermansson, vitor@pdworld.com

Editor Europe: Mikael Karlsson,
mikael.karlsson@pdworld.com

Editor North & Central America
Jim Parsons, jim.parsons@pdworld.com

Editor South America
Luiz Carlos Beraldo,
luizcarlosberaldo@gmail.com

Editor Russia & Eastern Europe
Andrei Bushmarin,
andrei.bushmarin@pdworld.com

Editor Africa
Kevin Mayhew,
designmp@iafrica.com

SALES OFFICES

International Sales Director
Germany/Austria/Switzerland/UK & Ireland
/BeneLux/Finland/France/Spain/Portugal and Italy
Andrei Bushmarin
Phone: +7 921 949 27 81
E-mail: andrei.bushmarin@pdworld.com

Sweden/Norway/Denmark/Liechtenstein/North America/South America
André Hermansson
Phone: +46 (0)8 631 90 70, Mobile +46 (0)70 979 04 03
E-mail: andre@pdworld.com

Australia/New Zealand/Asia Pacific/Korea/Japan and rest of the world:
Contact PDI editorial office in Sweden
Phone: +46 (0)8 631 90 70, Mobile +46 (0)70 979 04 03
E-mail: info@pdworld.com

Publisher
Jan Hermansson

The magazine PDI, Professional Demolition International is published five times per year with a worldwide circulation of 10000 copies. The annual airmail subscription rate is US\$ 45. All subscription correspondence should be directed to: The subscription department, SCOP AB, P.O. Box 786, SE-191 27 Sollentuna, Sweden. PDI is mailed by second class postage. ©Copyright SCOP AB 2000-2020

Cover picture: Rockwheel

PDI Magazine is a member of the following associations:



CONTENTS

PDi • issue no. 1 January - February 2022 • Volume 22

REGULARS

Editorials

- 6 Infinite expenses in 2022
- 8 Coming out of the shadows
- 10 An unbeatable scenario

Associations

- 6 EDA Convention 2022 in Paris

Business

- 8 Verkfæri appointed as
EvoQuip distributor for Iceland
- Hilti Group experiences double digit sales growth
- 10 Delivery of two Cat excavators
- Fachtagung Abbruch 2022 cancelled
- 12 Molson Group becomes ProStack UK distributor
- OilQuick and OilQuick USA announce expansion
- baumia Innovation Award 2022
- 14 New engine plant in India
- Hilti and Trackunit announce strategic partnership
- New customer support representative
- McCloskey International welcomes AS Centrocar

Jobsite Report

- 18 Parliament fire and Wupperthal village
- Nuns learn to operate Bobcat loader
to restore new home
- 49 Material handler instead of
excavator for metal recycling

News

- 17 Simex road planers for asphalt scarification
- Relief during physically demanding work
- Scanmaskin's ergonomic floor grinder
- Sale of 1,000th HM300 articulated dump truck
- 19 Bobcat launches all electric compact track loader
- New PC170LC-11 excavator
- 20 Three new crawler excavators from Hyundai
- Over 600 exhibitors for the first time
- 21 Wiresawing hardened steel
- Simex MP cutter heads for profiling
- Maximising safety and efficiency in pile cutting
- Kern-Deudiam expands into the Middle East
- 38 Recycling and environmental solutions
- 48 Optimised recycling in waste incineration plants
- 62 Innovative technologies for outer space construction
- Cat updates 'Next Gen' wheel loaders



- 64-65 New releases from Aquajet Systems
- 67 Crushing and screening river rock
- 70 Julie White selected for the
UK Prime Minister's Business Council
- 72 Yanmar new 'Premium Red' machines
- New releases from Husqvarna
- 73 Performance and functionality
- On solid ground
- 82 New DX50Z-7 and DX55R-7 mini excavators
- Allu China launches the new DC Series
- Reports**
- 40-42 Demolition in India getting slowly back on track
- 46-47 A Turkish recipe for success
- 60 Comprehensive equipment
for advanced core drilling
- 75 New Edge TRM831 New Edge TRM831
- Shows**
- 50-54 Recovery mode
- 63 Conexpo-Con/Agg 2023
opens call for education session ideas
- 76-81 A glance at the coming
bauma show in October 2022

Special Features

- 22-28 Latest news from the
fully automatic quick coupling sector
- 30-36 Load Stars
- 44-45 A bucketload of value
- 56-58 A re-tipping point
- 68 Powerful handheld machines and tools

Hole-in-one. Done.

PREMIUM drill systems with innovative technologies for demanding tasks in concrete. Reliable, powerful and long-lasting. For goal-oriented users.

Find out more at www.tyrolit.com



INFINITE EXPANSES IN 2022

The IACDS has been fighting tirelessly along with its members for years to make our industry better in order to improve and facilitate the conditions under which we and our employees work every day as drilling and sawing has made itself a successful and modern way of dismantling construction facilities. In order to do this we have undertaken many focused activities.

This will continue, as later this year the IACDS will publish a technical paper on slurry management under the direction of Erin O'Brian. This represents a milestone in dealing with the water extracted from drilling and sawing operations. Also, we will happily present further webinars, which are accessible to everyone as usual after registration. And not to forget there is a topic that has been on my mind for a long time: the coming digitalisation in our industry.

The latter is where I see that we, as companies in the drilling and sawing industry, seem to have some catching up to do, at least as far as it regards the non-Anglo/American parts of the world. But what is this digitalisation all about? In short, it's about combining construction site planning, dispatching, timekeeping, resource planning, work measurements, photos, messages, navigation and personal certificates in one system. These functions bundled in a single application give our work processes a whole new impulse. The 'office' now actually fits in a shirt pocket and can be used on both a PC and a mobile phone. We have planned a practical webinar on this topic.



Michael Findeis,
President of IACDS

I am very pleased to note that one of the largest and oldest of our member associations, the US association CSDA, will be celebrating its 50th anniversary later this year. The preparations for this anniversary are already in fully underway. It is worth noting that the CSDA was a driving force in the development of the machinery used when it came to health and safety and environmental protection. And let us not forget that the founding of the IACDS can be traced directly back to people like Pat O'Brian, and we look forward with another 50 years together.

Please remember that this year in October at bauma in Munich, the IACDS will present the Diamond Award for the first time in three categories: Contract, Product and Public. So, don't miss the chance to become one of the award winners and apply with your interesting cases or new, innovative products.

As usual, you can find all information about the Diamond Award and our activities at: www.IACDS.org



Daniel Ma Joins Allu as production supervisor for China

Allu has appointed Daniel Ma as its production supervisor for China. He will be leading Allu's Chinese production of its new DC Series. Daniel started his career over 20 years ago and has worked for different European companies managing production in factories for various organisations and has experience of growing the Chinese market. "My first few months at Allu have been fantastic. I'm able to shape the

direction of the production facility for the Chinese market and it is an exciting challenge. Allu has welcomed me to the family style culture and sense of teamwork with everyone going in the right direction. When I am not at work, I love to play basketball and go fishing. We have a clear direction and a lot of potential for the Chinese market. I am excited to be working with you (Allu) all," says Daniel Ma.



EDA Convention 2022 in Paris

The demolition and associated industries are finally back to meeting live again with the EDA Convention 2022 set to be held in Paris.

After a few blank years due to the global health situation, the European Demolition Association is back and planning the EDA 2022 Annual Convention. This is a reference event for the 'DDR' sector (demolition, decontamination and recycling), where both suppliers and contractors from all corners of continental Europe will meet.

Professional programme

This time the EDA Annual Convention will take place at Pavillon Dauphine saint Clair at Pl. du Maréchal de Lattre de Tassigny in Paris, France from the 9 -11 June, 2022. It will be held in collaboration with the French Demolition Association, SEDDRé, and the European Decontamination Institute, EDI. The convention will start at 10.00 Tuesday the 9th with a number of association meetings scheduled up to 13.00. After a lunch break, the day will continue with Workshop 1 at 15.00 and at 16.30 the second workshop of the day will start. Around 17.30 the EDA general assembly will be held until 19.00, followed from 19.00 to 21.00 by a welcoming cocktail party which will be held at the conference hotel, the Renaissance Hotel in Paris.

The following day is the conference day. At 09.00, the official opening of the convention will be held and continued with an introduction to the conference. 09.30 will see the start of the first session of the conference with a presentation of a case story. At 11.30 the second session starts, also presenting an interesting case story and will go on until lunch. During the lunch break, participants have the opportunity to network and visit the exhibition. At 14.00 the third session will start with another case story. During coffee breaks, participants will also have the opportunity to visit the exhibition. The last session of the day will be a presentation of a case story that will run from 16.30 until 17.30. This will bring to an

end of the professional programme for the day.

18.30 is scheduled as the departure time for the gala dinner which will be held at the Gustav Eiffel Hall. The gala dinner ends at 23.00 with the first bus leaving for the hotel. The gala dinner includes a welcome reception, dinner, change of EDA president and the announcement of new members of the EDA Club of Honour. Saturday 11th is more of a leisure day with a bus tour encompassing the city's most famous places and an opportunity to enjoy Parisian life. In the evening, there will be a dinner and show at the Lido Paris.

Call for papers

The EDA invites professionals interested in participating at the Annual Convention 2022 to submit ideas for presentations to be given during the conference. Professionals from several countries will be in attendance to discover the latest industry trends, discuss common objectives and work on best practices for the industry. The papers submitted for the presentations will be evaluated by the EDA Board of Directors which will aim to choose the most interesting topics. The EDA will reply to all applicants with an answer, either positive or negative, concerning the paper submitted.

Sponsors

Gold sponsors of the event are Epiroc, Sennebogen, Rotar and Caterpillar; gold sponsor level is at this point filled. Silver sponsors are Liebherr and MBL, whilst the Bronze sponsors are Dehaco and Arden with the Exclusive sponsors being Arden and Epiroc. There are still opportunities for sponsorship at the Silver, Bronze and Exclusive levels. There is also space for more companies that would like to exhibit at the convention trade show area.

PDi Magazine will be present and report on the event with a full review being published in PDi Magazine issue 4-2022

TO CHECK OUT RATES AND TO REGISTER FOR THE EVENT PLEASE GO TO:
<https://www.europeandemolition.org/activities/annual/eda-annual-convention-2022>

LAVINA

by  SUPERABRASIVE



BEST-IN-CLASS EQUIPMENT AND TOOLS

FOR FLOOR GRINDING, POLISHING AND MAINTENANCE

superabrasive.com

COMING OUT OF THE SHADOWS

On Wednesday 9 February, 2022, Sweden lifted its Covid-19 pandemic restrictions even though the infection rates are still at an extremely high level, but are declining. It is as if the government has decided that the pandemic is over and has ended. The Public Health Agency of Sweden, like many other country's health agencies in Europe, states that the new Omicron mutation is not as deadly as previous mutations and people aren't getting as ill as they had been with the other coronavirus variants. It has proved to be a real balancing act for the authorities to decide when we should return to a normal life, and, at this point, the whole Nordic region (as well as the UK) has lifted its restrictions, with the rest of Europe slowly coming out of the shadows.

What we have seen in Sweden, for instance, is that during 2020 companies in general did rather well in terms of results, excepting the hospitality and entertainment industries. Company turnovers' dropped a bit, but the profits were kept at the same levels or even increased. The reasons for this included lower costs such as less travelling and less exhibiting, with governmental support packages also contributing. But during 2021 things looked very different. The effects of the pandemic caught up with many companies and less market exposure has started to result in less sales and lower profitability. Sweden reached a breaking point and actions were needed in order to avoid a more serious recession. When the pandemic was not considered that dangerous for Swedish society, even though more contagious, the decision was taken to lift all restrictions. Denmark and Norway where precursors and lifted their restrictions a couple of weeks before Sweden. Let's hope that our authorities are right and that we are actually slowly coming out of this hell that we have experienced for such a long time. And let's hope that new mutations will not harm us that much.

All over Europe people are coming back to more normal working routines. Customer events and gatherings are planned again, with trade shows set to take place. In this issue we will make a preview of the European Demolition Association's annual convention that is set to take place live in Paris between 9-11 June. In the US, the National Demolition Association will hold its annual convention 'live' in San Diego between the 26 February and 1 March. The US Concrete Sawing and Drilling Association will hold its annual convention between the 30 March and the 1 April. So, life is definitely coming back.

The big occasion this year will of course be the bauma show to be held in Munich, 24-30 October, which you can read about in this issue, with the show being reported to be almost fully booked. Until bauma begins, you will be able to read a lot about new products that will be released at the show in the magazine. Also, the Scandinavian demolition show Demcon will take place 'live' on the 24 and 25 November in Stockholm after being postponed on two occasions previously. One meeting that has been forced to cancel this year is the German Demolition Association's Fachtagung 2022 that was scheduled for February. The Fachtagung is Europe's largest annual demolition gathering that every year attracts around 900 delegates.

Looking at the rest of the world in terms of trade shows, the trends are the same, with 'live' shows set to happen. The Concrete Show in São Paulo, Brazil, will take place in August; bauma China is set for November in Shanghai and BCIndia

is to be held in January next year. In this issue you can also read an interview with IDA, Indian Demolition Association's president Mohan Ramanathan about the situation in India today and during the last two years. You can also find a full report about World of Concrete 2022 that was held in Las Vegas in January this year. So, there is plenty of interesting stories in this issue, plus a number of special features about new equipment on the market. Enjoy!

Jan Hermansson
Editor-in-Chief

jan.hermansson@pdworld.com



EvoQuip has appointed Verkfæri Ehf. as its authorised distributor for Iceland. Verkfæri will supply the full range of EvoQuip equipment, including compact crushing, screening and conveying equipment and provide machinery maintenance.

Verkfæri have been in operation for over 12 years and now operate from two locations: one in Kópavogur in the capital and one in Akureyri in the northern part of the country. "Having Verkfæri Ehf. on board is a huge boost for EvoQuip," said Jamie Mairs, EvoQuip territory manager. "Their experience in the construction industry is extremely advanta-

geous and we have no doubt they are best placed to represent our brand in Iceland. Here at EvoQuip we provide world class equipment, but it is our local distributors who provide the world class service and customer support to match."

"Verkfæri Ehf. are delighted to work with EvoQuip to support customers in Iceland," said Ólafur Baldursson, CEO of Verkfæri. "We look forward to providing our customers with superior equipment alongside quality aftersales and parts service. EvoQuip have a quality product and we are proud to bring it to the Icelandic region."



Hilti Group experiences double digit sales growth

The Hilti Group achieved total sales of nearly €5.7B in 2021, 12.1% above the previous year's level. In local currencies, the increase in sales amounted to 12.2%.

"The recovery trend in the construction industry continued during the last four months of 2021. We were able to maintain double digit growth in a relatively stable currency environment and fully compensate for the coronavirus related decline in sales of the previous year. This has allowed us to close the year well above the pre-crisis level in local currencies," explains CEO Christoph Loos.

In Europe, sales increased by 13.8% in local currencies. The Mediterranean countries, in particular, experienced a strongly improved environment. The Americas also

generated double digit growth of 10.5 %, with Latin America posting disproportionately high gains. In Asia/Pacific, sales increased by 8.9%. Southeast Asia, in particular, still had to contend with severe Covid-19-related restrictions. The Eastern European countries primarily contributed to the significant increase of 12.3% in the Eastern Europe / Middle East / Africa region. Due to ongoing challenges, the Gulf States unsurprisingly fell short of expectations, while Turkey's currency devaluation had a negative impact.

Despite Covid-19, ongoing challenges in the global supply chain and current political tensions, the Hilti Group expects a positive development in the construction industry in 2022 and is once again targeting double digit sales growth.

ZENESIS

WORLD'S MOST ADVANCED
PATTERNED DIAMOND TECHNOLOGY

DESIGN
YOUR OWN
PERFORMANCE

□ DYNAMIC □ COMFORT



EHWA DIAMOND IND.CO.LTD. www.ehwadia.com | salesinfo@ehwadia.co.kr | Tel 82 31 370 9300 Fax 82 31 370 9191



Words from the EDA President

An unbeatable scenario

With this expression, we could talk about many things. We could talk about the opportunities that exist today in the DDR sector, which is constantly evolving and in which innovation plays an increasingly important and predominant role. Or we could also talk about the many doors that digitalisation opens, in our field and beyond. But in fact, I would like to speak of the scenario in an almost literal sense, since I am not referring to the theatre stage, but to a magnificent location where a long awaited event will take place.

These have not been easy years, without being able to meet, without being able to share experiences as we were used to. That's why the EDA Annual Convention 2022 will be more special than ever. After all, we have been working on it all this time, with the excitement of a child travelling for the first time and discovering new things. We will meet again with familiar faces, we will enjoy technical and informative conferences on topics that touch us every day, and we will build ties and relationships with those who share our profession and reality in different corners of Europe. But we will also experience something different, something new.

The EDA Annual Convention 2022 will take place in an unbeatable setting: Paris. And one of its highlights has a lot to do with movie sets....because... we have rented the Eiffel Tower! For those who wish to join us for a relaxed, entertaining

and exclusive gala dinner which will take place in the Gustave Eiffel Hall, on the first floor of the emblematic monument.

There, with movie like views and the company we miss so much, we will meet again. We are waiting for you, with open arms, and with the certainty that you will not forget a dinner like this one, in such a magical place as the Eiffel Tower and surrounded by colleagues from all over the continent and beyond.

About EDA

The EDA was founded in 1978 and is the leading platform for national demolition associations, demolition contractors and suppliers. The EDA has a strong focus on developments in Europe, which are of interest to the demolition industry.

info@europeandemolition.org
www.europeandemolition.org



**Francisco Cobo, President of EDA,
European Demolition Association**

EDA
EUROPEAN
DEMOLITION
ASSOCIATION



Lawson Demolition takes delivery of two Cat excavators

Demolition and licensed asbestos removal expert, Lawson Demolition, has invested in two Cat 323 hydraulic excavators to celebrate its 30th anniversary. The machines were acquired from the exclusive Caterpillar distributor Finning UK and Ireland.

Lawson Demolition provides bespoke demolition packages to clients by applying innovative methodologies to projects. Its newly acquired 323's will be joining Lawson Demolition's fleet of Cat excavators. The new machines come with built-in Cat 'Grade' with '2D', 'Grade Assist' and 'Payload' as standard equipment direct from the factory. Combined with what Cat is said to be up to 15% lower maintenance costs and 20% less fuel consumption, the 323's are a low cost per unit production excavator, built for heavy duty applications like demolition and site clearance.

This year, Lawson Demolition is celebrating its 30th year in business. Sadly, at the same time, the business is mourning the loss of its founder and respected leader, Martin Wilson. He was the driving force behind a self-grown business within the industry which was formed into a group of companies in October 2003 with the launch of the Lawson Group. The business is now led by managing director Claire Wilson and project director Andy Neath. In addition to Martin's commitment

to the Lawson Group, he served as president of the National Federation of Demolition Contractors from 2015 to 2017 providing a voice for the industry.

"Our 30th year in business hasn't been exactly as we imagined it, with the tragic loss of my beloved father and the continued impact of the Covid-19 pandemic," said Claire Wilson, managing director of Lawson Group. "However, with the help of our dedicated team, the support of Finning and our other suppliers, we're confident that his legacy will live on for next 30 years and more."

"We will continue our excellent working relationship with Lawson Group, something that we've had for 20 years through both sales and aftercare," said Darren Bodio, national account manager at Finning UK & Ireland. "The 323 medium excavators will be a fine addition to its fleet, and we will be supporting the company as they continue to secure projects planned for 2022 and beyond with servicing and maintenance from Cat certified engineers and a three year essentials parts CVA."

Fachtagung Abbruch 2022 cancelled

Due to the current pandemic development and the increasing number of infections, the Deutscher Abbruchverband e. V. (German Demolition Association) has cancelled Fachtagung Abbruch 2022. The next edition of the event will now take place on 3 March 2023. The Deutscher Abbruchverband stated that it very much regretted this step, but it

is unfortunately necessary, especially since a forthcoming official rejection seems more than possible which would pose even greater challenges. The association would have liked (to have seen) a different pandemic development at the beginning of 2022 and was looking forward to hosting its event. It apologises for any inconvenience caused.



FU15D
The new FU15D:
powerful, universal drive
unit for your tools

WEKA

TR40
Ring Saw

TK40
Chain Saw

HD16 / HD18
Diamond Core Drill

TS40
Disc Saw

WS75HF
Rotation Arm Wall Saw

HS40 / HS50
Hand Saw

www.weka-elektrowerkzeuge.de

Find more product information and contact details of WEKA distribution partners on our website.



LISSMAC
CONSTRUCTION TECHNOLOGY

**PROFESSIONAL
CORE DRILLING
PRODUCTS**

LISSMAC Maschinenbau GmbH
www.lissmac.com



EVENTS

NDA ANNUAL CONVENTION 2022

Demolition San Diego
Feb 26 -Mar 1, 2022
San Diego, USA

www.demolitionassociation.com

EUROPEAN DEMOLITION ASSOCIATION CONVENTION

9-11 June, 2022
Paris, France

www.europeandemolition.org

HILLHEAD

21-23 June 2022
Hillhead Quarry, Buxton, Derbyshire,
UK

www.hillhead.com

BAUMA 2022

24-30 oktober, 2022
Messe München, München,
Germany

www.bauma.de

BAUMA CONEXPO INDIA

2022
Gurugram, New Delhi,
India

www.bcindia.com

BAUMA CHINA 2022

22-25 Nov, 2022
Shanghai Exhibition Center,
Shanghai, China

www.bcindia.com

DEMCON 2022

November 24-25, 2022
InfraCity, Stockholm,
Sweden

www.demcon.se

WORLD OF CONCRETE

17-19 January, 2023
Las Vegas Convention Center,
Las Vegas, USA

www.worldofconcrete.com

CONEXPO-CON/AGG 2023

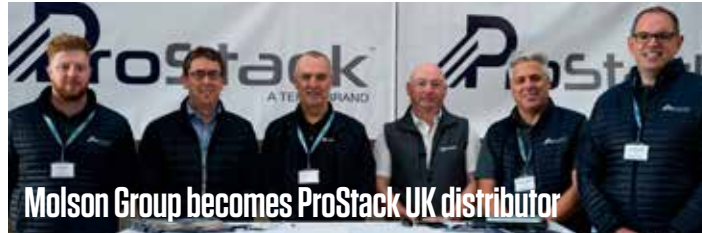
14-18 March, 2023
Las Vegas Convention Center,
Las Vegas, USA

www.conexpoconagg.com

SAMOTER 2023

March, 2023
Verona Exhibition Centre
Verona, Italy

www.samoter.it



ProStack has appointed the Molson Group as its UK distributor. Molson is a long established partner of Terex and will represent the full portfolio of bulk material handling and product stockpiling conveying equipment throughout the United Kingdom.

Terex company ProStack offers a portfolio of products to address the needs of the bulk material handling and product stockpiling markets. Key markets and applications include aggregates, mining, recycling, agriculture, ports and terminals, and many other bulk material handling industries. The range of ProStack machines includes tracked and telescopic conveyors, port hoppers and bulk reception feeders.

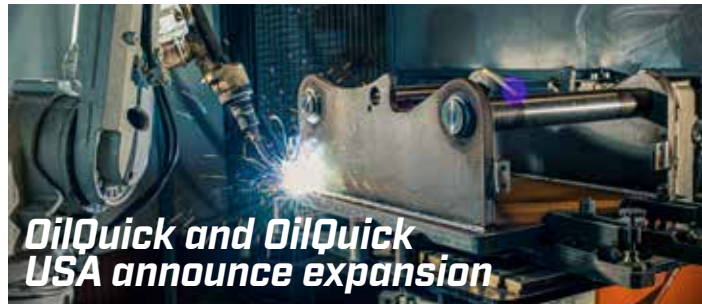
Molson Group, a dealer of new and used equipment, was formed over 25 years ago and currently operates from 13 locations throughout the United Kingdom, from Cornwall to Inverness. The company has over 85 fully trained service engineers, €9.5M worth of

parts stock, and, in their own words, a customer focused approach which enables them to provide clients of all sizes a single source supply option of products.

"Molson have strong relationships with other Terex brands and we feel they are the perfect fit for ProStack," said Lee Nesbitt, ProStack global sales manager.

"ProStack products are a fantastic addition to our product portfolio," said Jason Powles, Molson Group chief operating officer. "Like the other Terex brands we already offer, ProStack are known throughout the world for their build quality and innovation. Their range of bulk material handling and product stockpilers will further enhance our single source supply strategy, particularly to the Ports sector."

In addition to sales opportunities, Molson will provide parts, service and warranty support for ProStack equipment by factory trained technicians. A range of financing options will also be available to qualified customers.



OilQuick USA, an Exodus Global company, and OilQuick AB, the manufacturer of the OilQuick automatic quick coupler system, have announced a joint venture to manufacture automatic coupling systems in the United States.

The new JV company will be named OilQuick Americas, LLC, and will service both the North and South American markets. OilQuick Americas is said to be investing millions of euros in manufacturing machinery at its Superior, Wisconsin location. "Having worked with Åke and Henrik Sonerud for six years now, made the decision to form a JV with them easy. Their approach to business, commitment to quality, and respect they show their employees and customers dovetails perfectly with Exodus Global," states Kevin Boreen, CEO of Exodus Global, LLC, who continued: "The market for automatic quick couplers in North America is gaining momentum daily. This investment gives

OilQuick Americas the unique ability to service our customers with domestic manufacturing. With over 36,500 coupler systems installed worldwide, no competitor even comes close to the reliability of the OilQuick Coupler."

Henrik Sonerud, CEO of OilQuick AB states, "The team at Exodus Global is a perfect match for us, having the very same view of business, quality, and support for our customers. We are very happy to start this new journey with them. This is also a necessary step for us in our global expansion, by doing this, we release capacity for our growth in Europe and Asia, but even more importantly severely improve support to our customers in North America by shortening the delivery times and increasing the flexibility."

OilQuick Americas, LLC, began transacting business effective 1 January 2022, and will begin full production of the OilQuick automatic quick coupler system later in 2022.



Entries open until 3 May for bauma Innovation Award 2022

The period for entries for this year's bauma Innovation Award ends on 3 May 2022, with the awards set to be presented at the bauma Innovation Award Ceremony at the bauma show, which will be held from 24-30 October. All necessary information on the conditions of participation can be found at: www.bauma-innovationspreis.de.

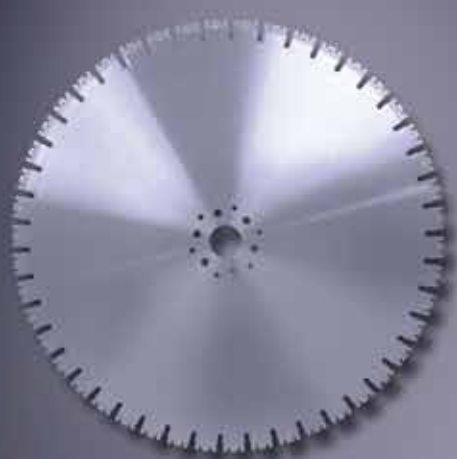
Candidates can submit their documents via a form on the web portal. The award categories have been revised to reflect changes in society and the construction industry. They now consist of: Category 1 Climate protection; Category 2 Digitalisation; Category 3 Mechanical engineering; Category 4 Building and Category 5 Research.

VDMA Construction and VDMA Mining, together with Messe München and the leading associations of the German construction industry HDB, ZDB and bbs, are conducting the multi-stage competition process and are hosting the awards ceremony in the Max Joseph Hall of the Munich Residence. Martina Scherbel, project manager of the bauma Innovation Award, will be happy to answer any questions about the participation procedure (martina.scherbel@vdma.org, +49 69 6603 1257).

The VDMA represents more than 3,400 German and European companies from the mechanical engineering industry. The industry stands for innovation, export orientation and medium sized businesses. The latter group of companies employ around 4M people in Europe, more than 1M of them in Germany. Mechanical and plant engineering has a European turnover volume of around €800B, with a net value of around €270B. It thus contributes the highest share of the entire manufacturing sector to the European gross domestic product.

bauma-innovationspreis.de

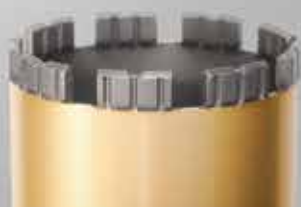
MEISTERWERK.



Wall saw EDIA Crown



Wall saw EDIA turbo



TURBO WET



EDIA DRY



EDIA WET



HSD Europe GmbH

- ADDRESS : Mergenthalerallee 77, 65760 Eschborn, Germany
- TEL : +49 (0) 6196 96 79 00 · FAX : +49 (0) 6196 96 79 015
- E-MAIL : info@hsdeu.com
- WWW.HSDEU.COM



SCAN ME

Yanmar commences production at new engine plant in India

Yanmar Engine Manufacturing India Pvt. Ltd. (Yemi) has announced the commencement of production at its new state of the art industrial engine manufacturing plant located at the Origins Industrial Estate in the state of Tamil Nadu, India. The new plant will produce 80,000 units of 15kW to 37kW class industrial engines per year with production capacity planned to increase to 160,000 units. The engines will be supplied to India, a major agricultural economy, as well as to Europe, the United States, Asia and other regions where demand is strong.

The plant will first produce engines for Yanmar brand tractors manufactured by International Tractors Ltd (a joint venture company of Yanmar) and for other agricultural and construction industry OEMs. "In emerging countries such as India, which are experiencing rapid economic growth, demand for industrial engines is expected to grow as mechanisation increases in the agricultural and construction sectors," said Varun Khanna, managing director of Yemi. "Since its establishment on 9 November 2018, Yanmar Engine Manufacturing India Pvt. Ltd. has worked towards commencement of operations," said Hajime Hirai, director of Yemi. "The new plant will be an important base for expanding Yanmar's global industrial engine sales in the future."

The new plant is equipped with the same production and quality control systems as those used in Japan to ensure high quality engine production. In addition, solar panels with a total annual output of approximately 1.380M/kWh have been installed. Together with the use of rainwater and greenbelts, the plant will utilise this renewable energy in its operation, greatly reducing its environmental impact.



Michael Neidow.

Hilti and Trackunit announce strategic partnership

The new partnership between the two companies is focused on bringing global scale to the tool and equipment connectivity domain. Together with Trackunit, an industry leader in fleet management services, Hilti has strengthened its 'ON!Track' asset management solution. At the same time, the Trackunit platform will be enriched with additional tool related data. The partnership also seeks to expand the network of Trackunit devices, providing increased connectivity around the globe.

"Connectivity is rapidly changing our industry. Through this unique partnership, we are excited to leverage our joint expertise to also further connect tools, machinery and service vans around construction sites in the near future, ultimately providing customers with innovative and integrated solutions that improve productivity and profitability," said Michael Neidow, EVP at Hilti and head of the Tool Services Business Unit. The partnership represents a joint ambition to increase productivity and eliminate downtime in the industry. It also marks a new digitalisation frontier in construction focusing on tools and equipment.

"By partnering with a global market leader like Hilti, we can further realise the collective digital business transformation of our industry. Together, we are uniquely positioned to help customers unlock insights from light equipment and tools, providing ample opportunity in decision making, efficiency and continuous

learning. The partnership goes way beyond standard ISO feeds and builds deep integration where data insights are now being made available across the two platforms in real time. The integration will deliver a standardised and stronger customer experience out of the box, eliminating the need for custom configuration and expensive IT integrations," said Soeren Brogaard, CEO of Trackunit.

Hilti provides market reach to a well-established Trackunit solution and enlarges the global network. Trackunit serves some of the world's largest OEMs, rentals and contractors, and with this strategic partnership, Hilti brings the access to the retrofit market and mid-market for expanding the Bluetooth network. With the data exchange model, Trackunit will also strengthen its offering to cover unpowered equipment and assets for its existing customers.

Data insights are now being made available across the two platforms in real time so that tools registered on Hilti's ON!Track system can be viewed on the Trackunit platform, and heavy machinery equipped with Trackunit hardware can be viewed in ON!Track. The partnership will allow Hilti to expand its ON!Track solution beyond light equipment to also cover heavy machinery, while creating an innovative solution for van inventory management for all customer categories in the construction industry.

Hitachi UK appoints new customer support representative

Hitachi Construction Machinery UK (HCMUK) has announced the appointment of a new customer support representative covering Northern England, Yorkshire and North Wales. Jon Williams joins HCMUK after two decades spent within the customer care sector. Jon's experience spans customer care and support, plant access equipment, telematics programming and overseeing the sales/hire process from inception to completion, making him a perfect fit for his new role at HCMUK.

Commenting on his new role, Jon said: "I am delighted to be working for a market leader such as HCMUK and believe my skill

set will enable me to prosper in this new role. I am looking forward to getting to know our customers and to help maintain the excellent level of service they have come to expect from HCMUK and to also work on new business opportunities in line with company objectives."

Stephen Creaser, product support director at HCMUK said: "We are delighted to welcome Jon to the team as we continue to invest in the Northern Region. Bringing a wealth of customer support experience, I'm confident that Jon will quickly establish himself and be a success in his new role."



McCloskey International welcomes AS Centrocara to global dealer network

McCloskey International has appointed Centrocara as its distributor for equipment and services to customers in Portugal. Established over 45 years ago, Centrocara is a multinational company dedicated to the sale of construction equipment and services. In 2008, it began expansion into Africa, and currently serves Angola and Mozambique. With 130 employees, Centrocara is well positioned to serve customers in the region with a full complement of sales and aftermarket solutions.

The partnership is also enhanced by Centrocara's stance on sustainability, which aligns with McCloskey's. Both continually work to ensure their programmes and equipment demonstrate a responsibility to the earth's natural resources and ensure the preservation of the environment for future generations. Offering McCloskey's mobile crushers, screeners and stackers, many of which are hybrid (dual power) or electric, rounds out a robust product portfolio offered by Centrocara.

"We want Centrocara to be a modern, flexible, trustworthy and a dynamic company, as well as a reference for its customers, suppliers, employees and shareholders," said Fernando Almeida, chief executive officer, Centrocara. "We invest in long term relations with our stakeholders in a market where time is the most rare and valuable variable. This equilibrium is the secret for success. The Portuguese market will give us good opportunities to grow with McCloskey; we expect that market can show robust growth in the next five years due to infrastructure investments that are foreseen for the country."

Toni Laaksonen, senior vice president, McCloskey International, noted that: "Having Centrocara join the McCloskey dealer network further strengthens our global footprint. They are strategically positioned to serve the market as we move into high growth opportunities like infrastructure development following the coronavirus pandemic. Additionally, the rich natural resource base in Portugal stimulates the demand for efficient, reliable and durable machinery and we anticipate this will contribute to the growth of our partnership and success in the marketplace."

With their depth of industry knowledge and broad customer base, Centrocara is in a strong position to support the sales of McCloskey equipment in the region. Almeida concluded: "In the aftermath of Covid, we anticipate strong growth, and McCloskey products will benefit both our companies and our customers."

A MASTERPIECE **BEYOND TECHNOLOGY**



OPTIMIZED DIAMOND ARRAY WHERE WE WANT IT!

ARIX technology allows optimized diamond particle array for the fastest speed and longest life



**SHINHAN
DIAMOND**

Masterpiece
beyond Technology

cs.en@shinhandia.co.kr

HEAD OFFICE [Republic Of Korea]
 21635, 13AE-10U, Namdong Industrial Park 375
 Namdong-dong-ro, Namdong-gu, Incheon, Republic of Korea
 T. +82-1600-4804 | F. +82-32-3614

GERMANY
 Mengenthalerallee 79-81, 65760,
 Eschborn, Germany
 T. +49-6196-761-0777 | F. +49-6196-775-874

USA
 SHINHAN DIAMOND AMERICA, INC.,
 900 S. Ajax Ave., City of Industry, CA 91748 U.S.A
 T. +1-626-363-9258 | F. +1-626-363-9259

Pentrunder[®]

RS2

18 kW AND LESS THAN 25 KG

Revolutionary one-of-a-kind integrated motors

Efficient slip clutches for all motors

Integrated 18 kW drive motor

Two integrated brush less feed motors; one for the saw arm rotation and one for traveling along the track

Both feed motors can be used at the same time

Designed with the customer in mind

The Pentrunder RS2 saw head weighs less than 25 kg

Waterproof, IP65

Blade rotation in both directions

Shorter setup times

Quick disconnect coupling for blade

Easy fitting of blade

Same track system as all other Pentrunder machines

Highest stability and best handling

Easy assembly of saw on track

Same track feet mounting distance as for the HF-saws

One connector and cable only

Only standard hand tools needed for maintenance

Pentpak 3

Waterproof, IP64

Highest EMC level

Light weight, easy to fit blade guard

Best protection and handling





Simex road planers for asphalt scarification

In its wide range of cold planers, Simex offers four models with oversized drums specifically for scarifying the road surface. These consist of the PL 1000, 1200, 1500 and 2000 with widths of 100, 120, 150 and 200cm respectively, and a working depth 130mm maximum. The four models possess all the features that have made Simex planers a standard of reference for the sector. In addition to their robust construction and the hydraulic components that provide power and a long life, they also benefit from patented solutions, including the self-levelling system and the 'Performer' device that allows the operator to optimise performance. Other features include milling drums of 100, 120, 150 and 200cm respectively, a spray system with tank built into the frame; a dual motor and high torque for high performance.

The self-levelling system enables working of the sur-

face whilst ensuring a constant planing depth in any condition regardless of the ground contour, or the position of the attachment with respect to the base machine. The slides move independently of each other and follow the surface to the right or left. The independent depth adjustment on the right or left, combined with the self-levelling system, achieves perfectly flat surfaces with side by side passes.

Thanks to hydraulic side shift, the planer can be used in a central or lateral position for milling flush to the walls, whilst the new lateral slides have been designed for protecting the corner shaped hoses from abrasion. The dust suppression system includes an electro pump, filter, sprayers and a water tank built into the side shift of the planer. The latter provides significant dust control during milling operations with no need to install a water tank on the roof of the base machine.

Relief during physically demanding work with the 'Mmexo'exoskeleton

The total weight that an industrial worker lifts during a working day can be as much as 10t to 15t. Static work, lifting and above the head, leads to stress injuries and worn bodies, making load damage one of the major challenges for businesses in the construction industry.



MM Norden has launched a unique exoskeleton for the European market, being an 'extra skeleton' that provides support and relief and therefore reduces the risk of injuries. Mmexo helps when working with the hands in front and above the head. The arms are held up with the help of a harness, which relieves during monotonous and physically demanding work. Paulo Bergstrand of MM Norden says of the development, "To save people is to save money."

The aim of Mmexo is that it should be easy to use. Paulo Bergstrand has worked for a long time in the construction industry, and knows from experience that the product is required to be easy to use, but also comfortable if it is to be used in the workplace. "Mmexo contributing to a sustainable working life is a question of the future. I have not least noticed this in discussions with both the unions and other stakeholders in the industry. It feels exciting to be part of this vision for the future, and I hope that more people realise that there is money to be made through a good work environment," explains Paulo.

Convenience and simplicity have been important factors in testing and development with high levels of interest being shown from both unions and employers. The exoskeleton market is expected to grow strongly in the coming years with the global market estimated to be worth around €2B by 2025. Mmexo is now available for rent from Renta in Sweden.



'Move/Edition' – Scanmaskin's ergonomic floor grinder

Scanmaskin is pleased to announce the latest addition to its 'World Series' line, the Move/Edition, which is said by the company to be its most ergonomic floor grinder. It is said to have been designed by customers for customers, with the development featuring a robust cast planetary with unmatched durability. The simplistic design allows for easy and quick repairs during common servicing, allowing customers to get moving faster than ever.

Scanmaskin's goal was to make workdays easier and less strenuous, without compromising performance. The Move/Edition features a new handle with two adjustment points and 360° of rotation on the hand grip. This also enables good hip support along with high and low positions to accommodate any operator. The new Move/Edition motor weighs less without compromising performance, now weighing in at around 23kg. The detachable new front wheel also reduces weight when removed and gives an improved ground clearance making it easier to move. Scanmaskin has updated the wheels to ergo solid wheels with a larger diameter which provide up to 40% less resistance when moving the machine.

The Move/Edition grinder was launched during World of concrete in Las Vegas in January, 2022.

www.scanmaskin.com



Komatsu Europe announces sale of 1,000th HM300 articulated dump truck

Komatsu Europe is pleased to announce the sale of its 1,000th HM300. During a special event organised on 14 December 2021, the new 30t dump truck and a PC360 hydraulic excavator were delivered together to Imerys, at its Croix-Gérard quarry in Poigny, France. Julien Alix, Imerys' regional category manager stated: "Today we bought a Komatsu HM300 together with a PC360 excavator in a fleet logic in order to have the best economic performance, but also the best operational performance, the best service, the best reactivity." In his speech, Philippe Haguenaer, president of Komatsu France, said: "Komatsu has a leading expertise in the field of rigid dumpers. This has enabled us to adapt certain elements of these trucks, such as the KTCS system, which automatically controls wheel slip in difficult conditions to our articulated dumpers."



The village of Wupperthal was almost totally destroyed.

Parliament fire and Wupperthal village

Demolition or heritage preservation to be tested again.

When a fire destroyed South Africa's Parliament building on 2 January this year, the option of total demolition or preservation for heritage reasons became an issue again in the Western Cape. The country's National Assembly building in Cape Town was completely destroyed and the National Council of Provinces building in the parliamentary complex was damaged in the blaze in the early hours of the morning. It took about two days for the fire to be brought finally under control.

Apart from its importance to the governing of the country, the building qualifies as a Heritage Site as the original building was completed in 1884, with additions being made in the 1920's and 1980s. The 'demolish or preserve' option presented itself almost three years ago to the day at Wupperthal, a small village in the Western Cape, in the aftermath of a devastating wildfire on 31 December, 2018. The town was founded in 1830 as an outreach centre for missionary activities, with a church as its centrepiece.

The New Year's Eve fire swept through the village and surrounding area causing widespread devastation. Most buildings in the town were destroyed. Ironically, one of the buildings spared was the church. The fire left 200 residents homeless and many wanted demolition of what was left of the village. However, heritage legislation required a rebuild to the original facades, which was completed in 2021, with a large amount of money provided by one of the country's most prominent and wealthy families.

An architect involved in restoring heritage buildings stated that the dilemma over the parliamentary complex will be the same as in Wupperthal because it must adhere to South Africa's legislation regarding heritage buildings. In both cases, there will be some demolition, but it will be limited to necessary elements that do not remove or alter the richness of its facades or interior architecture.



Nuns learn to operate Bobcat loader to restore new home

After more than two centuries living in a monastery in Hradčany square next to the Castle in the centre of Prague in the Czech Republic, the order of Discalced Carmelite Nuns has moved to a new home in the village of Drasty, to the East of Prague. The former farming property in Drasty has a rich history dating back to 1305, but when they moved there in 2018, it was in a considerably dilapidated state.

The nuns have employed a variety of techniques in developing their new home, including the use of a Bobcat 773 skid steer loader, which they have learnt to operate themselves. The 1997 loader is still in good condition thanks to its robust construction and regular servicing and is more than able to be used to carry out a lot of hard work. Because of its age, the owners of the machine did not use the machine regularly and kindly lent it to the sisters for their use. The nuns have been using it in a basic configuration with a bucket and fitted with pallet forks to transport materials about the site.

Driving is intuitive

Sister Milada, a member of the order, described the construction work with the Bobcat loader: "When we bought the area in Drasty, it was clogged up with a number of landfills and overgrown with mature trees. Knowing that we would not have enough money to repair the whole yard, we decided to do some work on our own or with the help of volunteers. We soon found out that we needed machines and equipment for these difficult initial jobs, so some of us learned to drive a tractor, use a chainsaw or brushcutter and to operate the Bobcat loader. The latter helped us a lot right from the beginning when we needed to move around any heavy materials, especially large tree stumps for burning. Later, we used it to transport pallets with bricks, soil, stone, for landscaping in the meadow and to add gravel to the roads in the forest park.

"At the start, when we needed machines, we would source them with operators. But we soon found out that we could operate some of them ourselves, so we decided to buy or rent the machines and operate them ourselves.

We had the long term loan of the Bobcat loader and our Sisters Terezka and Sára found that after renewing their driver's licenses when we moved, they were only a short step away from operating machines like the Bobcat."

Sister Terezka, who has operated the loader the most, said of her experience: "I like the very simple, intuitive operation of the Bobcat loader and the fact that it can be used for many different tasks that need to be done here. It is excellent for transporting any heavy materials, so that we do not have to carry them by hand in wheelbarrows. It can be used to get to less accessible places and it is very handy for various landscaping and levelling tasks, many of which we have completed with the machine. The loader has saved us a lot of time and energy."

From ruins to a new cultural and spiritual centre

The Discalced Carmelite Nun community in Drasty faces a difficult task. They have already achieved so much, but there is still so much more work ahead. The aim is to move forward with the construction of the complex so that it can best serve visitors and the nuns. "We believe that this former dilapidated farm outside Prague will become a very accessible spiritual and cultural centre, where everyone who needs it will be able to preserve their humanity and spirituality and from where they will leave with new strength for everyday life," concludes Sister Milada.

Anyone who would like to donate to help the work on the new convent can do so by visiting <https://bit.ly/DuchovniCentrumDrasty> and the nuns can be supported directly via their website <https://karmeldrasty.eu/obchod/> & <https://karmeldrasty.eu/en/shop/>

BOBCAT LAUNCHES ALL ELECTRIC COMPACT TRACK LOADER

Doosan Bobcat has unveiled its new all electric Bobcat T7X compact track loader at CES 2022, held last January in Las Vegas in the USA. The T7X, which was honoured with two CES Innovations awards, is said to be the first machine of its kind to be fully electric, offering the full benefits of eliminating hydraulic systems, components, emissions and vibrations, all while providing a cleaner, quieter machine.



The Bobcat T7X was developed for the North American market initially, but internal testing and the gathering of customer feedback is planned for the Europe, Middle East and Africa (EMEA) region to identify its commercial potential. Scott Park, president and CEO of Doosan Bobcat, said: "Doosan Bobcat is at the forefront of innovation, and we are proud to debut the all-electric technology of the T7X to help customers maximise both sustainability and productivity. Our focus remains on providing solutions and products that empower people to accomplish more and build a better world."

"This machine is a technological feat for Bobcat and for the entire industry," said Joel Honeyman, vice

president of global innovation at Doosan Bobcat. "We challenged the status quo to deliver a connected, all-electric machine designed for power and performance that previously was not possible. We are excited to share this advancement with the world and proud of the hard work that has gone into making this a reality."

Commenting on future plans for EMEA, Vijay Nerva, head of innovation at Doosan Bobcat EMEA, said: "The T7X has been developed for the North American market for now but it addresses a global need and challenge. We plan to undergo internal testing and gather customer feedback in various countries in the EMEA region this year to better understand

customer needs in this market before taking commercial decisions."

Sunbelt Rentals commits to electric

Doosan Bobcat NA (North America) announced a strategic partnership with South Carolina based Sunbelt Rentals, a leading rental equipment company in North America. Through this partnership, Sunbelt Rentals committed to investing in a large fleet of Bobcat T7X all-electric compact track loaders and electric compact excavators. Sunbelt Rentals will be the first national equipment rental company to adopt Bobcat's battery electric technology.



KOMATSU EUROPE ANNOUNCES NEW PC170LC-11 EXCAVATOR

Komatsu Europe is pleased to announce the launch of its redesigned PC170LC-11 excavator. The latest addition to Komatsu's EU Stage V emissions compli-

ant family, the PC170LC-11 excavator retains all the customer values of the previous model and additionally benefits from EU Stage V emissions compliance thanks

to Komatsu's proven after treatment system and a range of new customer focused options.

With growing demand for environmental solutions and urban areas becoming increasingly sensitive to emissions, the PC170LC-11 EU Stage V crawler excavator provides customers with the opportunity to participate in any tender, demonstrate environmental credentials and future proof their investment. Paul Dickinson, product manager at Komatsu Europe says: "The updated PC170LC-11 Stage V has many new features. The introduction of Komatsu 'Integrated Attachment Control' with flow and pressure settings for up to 15 attachments means quick and easy tool changes. The new blade specification undercarriage, with two width options, provides additional functionality for site clearance and basic dozing activities as well as additional stability for digging. The new LED work lamps extend the working day with daylight like illumination in the working area and around the machine. Not forgetting the Komatsu designed and developed low ground pressure option is available for those applications requiring ultra-low ground pressure."

'Komtrax telematics' and 'Komatsu Care', a Komatsu maintenance programme for customers, offer fleet management and support, protect the machine against misuse and aim to ensure maximum efficiency and uptime.



THREE NEW CRAWLER EXCAVATORS FROM HYUNDAI

Hyundai Construction Equipment is launching three EU Stage V compliant 'A-Series' crawler excavators in the 13t -15t category. Powered by the latest Cummins diesel engines, the reduced tailswing HX130A LCR, conventional HX140A L and the reduced swing HX145A LCR feature improved hydraulic control for enhanced productivity and increased uptime.

Though offering similar operating weights, the HX130A LCR, HX140A L and HX145A LCR deliver very different performance operating envelopes to suit a range of customer requirements. The reduced swing HX130A LCR, which will appeal to rental customers, is powered by a 55kW version of the Cummins F3.8 engine. The engine meets the EU Stage V emissions standard without the need for an exhaust fluid such as AdBlue. The HX130A L also benefits from Hyundai's ECD engine connected diagnostics, providing remote diagnostics and ensuring that technicians arrive at the machine with the required parts and tools. The conventional counterweight HX140A L uses a more powerful 100kW version of the Cummins engine to deliver maximum digging forces and higher productivity.

The third model to benefit from the Stage V update is the HX145A LCR. Like the HX130A LCR, this reduced tailswing model is particularly suitable for ap-

plications where space to manoeuvre is at a premium, such as utilities, road working and housebuilding. Boasting the same 100kW output as the HX140A L, the engine is said to deliver an 8% power boost over its predecessor, while delivering a 4% fuel economy gain and a 60% reduction in PM emissions. The HX145A LCR delivers up to a 6% fuel improvement in levelling work and a 3% drop in consumption during truck loading when compared to the HX Series model working in P mode. As with the conventional tailswing models, the compact radius excavator offers service intervals of up to 1,000h when operating with CK-4 E/G oils. The machine also features Hyundai's 'HCE-DT Air', permitting wireless connection to the excavator from a smartphone or laptop computer on site. This promotes rapid diagnosis and reduces costly downtime.

The 'HX A' Series machines have an upgraded IPC system, tuning pump flow rate and power to meet

operator demand. The design of the main control valve and the hydraulic pipe layout has also been optimised to minimise energy loss throughout the system. A new 'Lifting Mode' improves fine control and lift capability, reducing engine rpm, activating power boost and offering improved pump flow control. The machines are also offered with an optional 'Fine Swing Control', smoothing the movement of the boom at the start and stop of the swing movement.

The HX A Series excavators benefit from a host of digital connectivity technologies. This includes the proven standard 'Hi Mate' remote management system that delivers high levels of service connectivity and remote diagnostic ability. The 'Mobile Fleet App' has been updated to allow fleet owners easy access to machine operating data, including economical usage, utilisation and fault code recognition.

Optional 'Engine Connect Diagnostics' (ECD) allows technicians and dealers to support customers with diagnostic reports and engine performance data. HCE-DT Air also allows the customer to connect wirelessly through a smartphone or laptop on site.

Hillhead set to host over 600 exhibitors for the first time

It's back to face to face business at Hillhead 2022, with more companies showcasing their products and services than ever before. A plethora of leading players from the quarrying, construction and recycling sectors look for-

ward to meeting visitors in the spectacular setting of the Hillhead quarry. The exhibition takes place from 21-23 June 2022 at Hillhead Quarry, near Buxton, Derbyshire. www.hillhead.com





Wiresawing Hardened Steel - High Pressure Steam Turbines

Cutting up to 1.8m diameter solid hardened steel (NiCrMoV for the interest of all the metallurgists out there) is not for the fainthearted. After a number of contractors turned it down and said it couldn't be done, Dymatec's client Drillcut took it on with aplomb. After conducting several tests, the Dymatec Diaform Duo, double electroplated wire was the only one up to the job. Drillcut had to make 7 cuts in total with an average size of 1m in diameter. The unique steel used in the turbines had been in use for over 30 years and baked in temperatures up to 600°C thus tempering the steel to a phenomenal degree of hardness. It just shows what is achievable when you couple a contractor with experience to a supplier with world leading products and above all, a "can do attitude".

www.dymatec.com



Simex MP cutter heads for profiling

Simex has introduced three models for excavators from 14t to 40ts specifically designed for profiling on horizontal, vertical or sloped surfaces, keeping a constant milling depth. The thickness of the material removed is controlled by wheels or lateral slides. Working depth is set by the lateral wheels, which provide a constant milling thickness which has proved to be effective when profiling tunnel vaults during rehab works. Other features include a tilting base plate, equipped with two dampers, a water spray kit for dust abatement in tunnels (optional on MP 600). The new MP 600 cutter head for profiling has been designed for 14t-22 excavators. It can be equipped with one side wheel, making it ideal for applications where the overall dimensions of the frame must be reduced to a minimum. Simex now provides over 110 models to provide solutions to the most challenging applications in road maintenance, underground utilities, trenching, construction, tunnelling, demolition and recycling.



Maximising safety and efficiency in pile cutting

The new bio-product mill site in Kemi, Finland has proved to be a great project to demonstrate the abilities of MotoCut pile cutters. There, two 'Q-350' pile cutters have been operating every day to cut over 60,000 concrete piles to a tight schedule without compromising safety. 95% of all piles at the site have been already cut and the project is nearly finished.

MotoCut was established in 2012 with a mission to improve safety and efficiency on construction sites. Pile cutting is usually done manually with either hydraulic, electric or petrol handsaws where a worker is exposed to heavy physical work, dust, fumes and flying debris. Cutting work is also carried in groups where an excavator still needs to support the pile to prevent it from falling while a saw operator cuts the pile. Transporting piles away also needs an excavator with grapples or other lifting equipment, which increases the amount of work and risks faced while saw operators continue to cut piles.

MotoCut released its first 'Q-Series' concrete pile cutter in 2015. This could be operated by a single excavator operator without the need of additional workers. The company was able to prove that cutting piles can

also be safe and efficient. Since then, the company has delivered cutters worldwide using a global dealer network. MotoCut also released its 'P-Series' (plasma) steel pile cutters in 2018 to provide automatic cutting for steel piles. MotoCut also launched its own 'MotoTilt-rotators' to offer a complete cutting solution package to its customers.

The use of manual petrol and hydraulic saws is now very outdated at construction sites and not worth risking employee safety. With MotoCut pile cutting equipment, cutting work is carried out safely, predictably and sustainably. MotoCut equipment already fully supports electric excavators to contribute for sustainable construction site operation, meaning emission free operation in pile cutting.

Existing customers have already provided feedback on MotoCut equipment, with most expressing positive sentiments regarding improved safety and predictability in site planning. Customers have also pointed out that with MotoCut pile cutters it is five to eight times faster to cut piles when compared to traditional methods, as the equipment only needs a single operator who will be able to carry out whole process from cutting to transportation.



Kern-Deudiam expands into the Middle East

The German manufacturer of quality tool and machinery has placed its offering together in a flagship store providing an exciting new concept. The brands, including Kern-Deudiam, Flex, Weka, Wolff and Keil, are now all available from one location in Dubai. In almost 20 years of active business relations, the company has also launched another store in the Middle East in the thriving U.A.E. As well as its own offering, Kern-Deudiam will also offer a selection of internationally renowned brands.

The Kern-Deudiam range covers such areas as building and construction hardware, construction machinery and accessories such as cable reels or safety shoes, angle grinders and polishing machines from premium core drilling equipment to grinding tools.

The new development means that the company now has representation in the U.A.E. at three locations, with a total of 20 employees and almost 400m² of sales area. The facilities are located in Dubai (Al Quoz), Sharjah and Jebel Ali Free Zone Area (Jafza, Dubai). Almost all products are in stock and available on demand, thanks to about 700m² of warehouse space.

For many professional contractors, it may also be interesting to know that the German manufacturer operates an official dealership and repair centre for Weka power tools, which has become for many the preferred brand for core drilling machines and diamond cutting machines.

www.kern-deudiam.ae



LATEST NEWS FROM THE

FULLY AUTOMATIC QUICK COUPLING SECTOR

Fully automatic quick couplers are today a must in the global demolition and recycling industries. Here are the latest developments.

Efficiency, safety and environment are all generally becoming more and more important on demolition and recycling worksites as using the right tool for the job is extremely important today. Fully automatic quick coupling systems have been the solution for the operators for years now, with new systems and upgrades being released continuously. In PDi issue 1 every year we always take a look at what's new and what has been released during the last 12 months in terms of quick couplers. Here you go, with the latest from manufacturers.

'Smart Attach' from Kramer

When the first automatic quick couplers were released they were mainly for excavators, but today there are also automatic quick coupling systems for other construction vehicles. Kramer has released an innovative enhancement of its well-known quick change plate for wheel loaders. The new, patented and fully hydraulic quick hitch system, Smart Attach, aims to ensure

greater productivity, efficiency and safety. Customer requirements have been a key focus here, resulting in the achievement of fundamental and sustainable benefits. Kramer's well-known quick change plate has been a standard piece of equipment for wheel

loaders since 1963 and is still a fully effective system. Widespread approval continues to form the basis for further development, which led to Smart Attach. The dimensions of both systems are identical, so existing attachments can continue to be used.

Hydraulically driven attachments can be coupled with the new system without getting in and out of the vehicle, as connection with the hydraulic circuit is automatic. The attachment is locked and hydraulically coupled, with automatic pressure release by a simple touch of a button with a secure two hand operation. With the coupling unit's integrated locking display (green), the operator can always see that the attachment is attached to the machine successfully and securely. For all machines already fitted with the new quick change plate, the display also features a corresponding illuminated indicator. What makes the new and patented system so special, therefore, is its total flexibility. On the one hand, attachments without the hydraulic function and attachments with the conventional hydraulic



The Kramer Smart Attach for wheel loaders.

coupling system can still be used. And on the other hand, customers also have the option of retrofitting older attachments or using new attachments that are customised ex-works to the Smart Attach system with the tried and trusted quick change plate.

This flexible solution is unique on the market. The patented system with floating coupling storage also ensures that there is no wear on the quick coupler. The performance characteristics of machines used in combination with the new Smart Attach system remain at the highest level. Consequently, not only does Kramer ensure that there is no need for constant interruption to the scheduled work process, the company also scores points with operators who are able to make quick and safe use of the appropriate attachment for the relevant application. For example, following any leakage of bulk material, nothing stands in the way of any urgently needed switch between grapple bucket and sweeping machine on the construction site. In the meantime, however, arriving trucks can also be unloaded directly and easily in seconds, with a fully automated change of attachment, from the grapple bucket currently in use to the pallet fork which is now required.

Kramer also provides the EC declaration of conformity for the entire system, for both machines and attachments. Initially, the system will be offered as an option in the large '5-series' as well as for some machines in Kramer's premium '8-series' range. As well as the attachments already factory fitted for these machines, corresponding retrofit kits will also be provided ex-works to enable existing attachments to be fitted with the system. With this innovative and sustainable enhancement - the fully hydraulic quick hitch system Smart Attach - Kramer continues its focus on flexibility, durability and quality.

www.kramer.de

Liebherr 'Likufix' for wheel loaders

The fully automatic Likufix quick change system, an in house development by Liebherr, is a well-established development for Liebherr hydraulic excavators, having proven itself in the medium sized series of wheel loaders in recent years. It is a solution that comes into its own in operations involving multiple working tools. The Likufix quick coupler system allows the operator to safely and conveniently change mechanical and hydraulic working tools at the push of a button from the cab.

Liebherr is now increasing the availability of its fully automatic Likufix quick change system for additional wheel loader models. It is now available for the two compact loaders L 506 and L 508, for the two stereo loaders L 507 and L 509 as well as for the 'XPower' large wheel loaders up to the L 580. As before, Likufix is still



The Liebherr Likufix for wheel loaders.

available for the medium sized Liebherr wheel loaders L 526, L 538 and L 546.

The smaller Liebherr wheel loaders from the L 506 'Compact' to the L 509 'Stereo' are known as versatile all-rounders. With Likufix the flexibility increases even further. The machine operator can switch, for example, between a hydraulic 4 in 1 folding shovel, a forklift or a sweeper within seconds at the push of a button. The hydraulic lines are connected automatically and reliably with Likufix which means no valuable time is lost.

Working with hydraulic tools such as high dump buckets, buckets with hold down devices, log grapples or separator buckets is typical for larger Liebherr wheel loaders. This is why Liebherr also offers its fully automatic quick change system for larger wheel loader models. Likufix makes it possible for the machine operator to easily change these and other tools at the push of a button from the cab. This increases safety because when changing equipment there is no need to leave the cab and therefore no risk, for example, of going out into the site traffic at a recycling yard.

The Likufix quick change system is prepared for tough requirements. The hydraulic coupling is supported by springs. The forces that act on the quick coupler are therefore not transferred to the coupling system. Even with long periods of use, the connections between the hydraulic circuits remain absolutely tight. To make maintenance easier, all moving parts are easily accessible. If necessary, customers can easily carry out cleaning and simple maintenance activities such as changing a seal themselves.

www.liebherr.com

'Connect', the integrated quick coupler from Mecalac

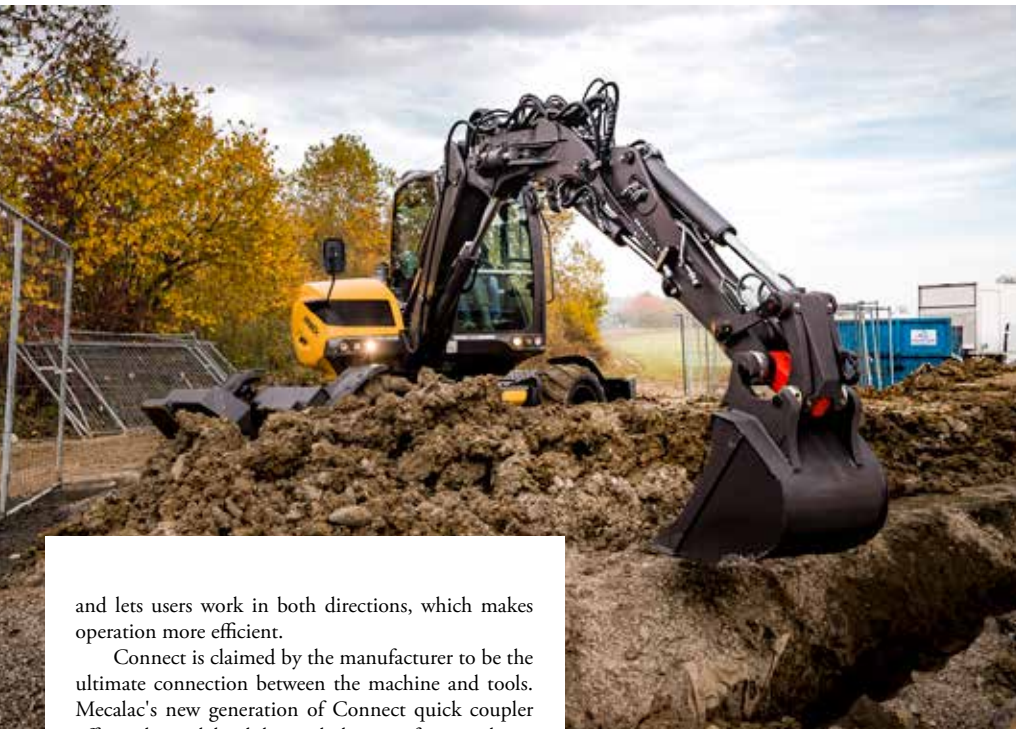
Mecalac states that it was the first manufacturer to equip its machines with a hydraulic quick coupler as a standard. Its integrated Connect quick coupler was recognised at the Intermat Innovation Awards, when it was launched in 2015 for being light, reversible, easy to use and completely safe. There is no need for an intermediate and heavy part to be added in between the tool and stick for the connection, and therefore no

extra weight. This compactness also further reduces the distance between the end of the stick and the tools, thus further preserving forces at work.

The Connect hydraulic quick coupler is a combination of a 'hanging system' on the tool side and the hydraulic coupler itself. The 'hanging system' (patented by Mecalac) is a hook device preventing the tool from falling both when it is unlocked and when working. The hydraulic coupler itself is made of just a cylinder that locks and releases the tools. The cylinder also compensates the play due to the wear of the tool over time. Mechanical tools are switched very easily directly from the safety of the cab thanks to this ultra-intuitive device. The Connect quick coupler is also reversible



The Mecalac quick coupling system.



and lets users work in both directions, which makes operation more efficient.

Connect is claimed by the manufacturer to be the ultimate connection between the machine and tools. Mecalac's new generation of Connect quick coupler offers enhanced durability with the manufacturer claiming it to be 'proven to be the best coupling solution of the market'. Mecalac Tiltrotators, recently launched, are compatible with a twin Connect coupling system.

www.mecalac.com

The OilQuick solution with new plant in the US

OilQuick states that it is the original developer and first commercial manufacturer in the world when it comes to fully automatic quick couplers. According to the company, OilQuick is also the world's best-selling manufacturer of hydraulic quick coupler system with over 40,000 systems sold worldwide. Decades of experience and testing have provided the reputation that the solutions work and that the operators get an outstanding combination of quality, performance and safety. "Many copies of our technical solution exist today. Both Steelwrist, Rototilt and SMP are based on the technology OilQuick developed during the 80's," says OilQuick president Henrik Sonerud.

Based in Hudiksvall, Sweden, with subsidiaries and sales organisations in multiple countries, OilQuick now operates throughout the world and offers products, as well as support and service. With 120 employees in Hudiksvall, last year's turnover was about €460M. OilQuick is in a very expansive phase right now, expanding both production plant and office facilities in Hudiksvall. The company is continuously hiring new staff and looking for ways to grow as fast as it can. OilQuick is also growing in Europe and this January also started a production plant in USA under the new name OilQuick Americas.

With an OilQuick fully automatic quick coupler all attachments can be changed directly from the driver's cab in just seconds. The operator can stay safely and comfortably in the cab, and still always have the right attachment for the job. The OilQuick safety features help the operator to avoid dropped buckets and other attachments. The OilQuick product series contains quick couplers for excavator, 'OQ', quick couplers for material handlers and cranes, 'OQC', quick couplers for loading machines, 'OQL' and quick couplers for forklift trucks, 'OQT'. In addition OilQuick also offers 'OQTR-E'

which is based on the manufacturer Engcon's rotor body and OilQuick's couplers. OilQuick also produce the 'OilQuick LockSupport (OQLS)'.

With the various fully automatic quick coupling systems from OilQuick, the operator can change easily between various work tools and attachments within a few seconds. This includes such attachments as a hydraulic hammer, steel shears or concrete cutters, concrete



The original and probably the most used fully automatic quick coupling system in the world.



pulverisers, sorting grapple, electric magnet, compactors, sorting buckets, tilt bucket or tiltrotator. The systems come with a wide range of connections to suit specific needs and can distribute hydraulic oil, grease, water and electricity. Other advantages are fast change of hydraulic, electric and mechanical attachments from inside the cab to ensure the right attachment for the job. The systems are safe, meaning that no staff are around the machine during tool changes, with the systems meeting all safety standards on the market. Other benefits are that the system reduces the number of machines on the site and increases productivity which leads to increased profitability. Further advantages include reduced transport costs, minimal oil spills, protected hose routing and less dirt in the cab.

Additional benefits, with for instance the OQC couplers for handlers and cranes, are that the hydraulic cylinder has double hose rupture valves. Full system pressure continuously applied to the locking bolts ensures that the attachments are locked securely in place without any play. The robust quick coupler is made of high grade steel. The OQ system can be supplied in various models for machines from 1t to 120t.

The OilQuick LockSupport (OQLS) is an advanced user friendly driver support for safe and secure attachment switching on excavators. OQLS is available for all nine sizes of OilQuick fully automatic quick couplers and all tiltrotators. Nowadays modern excavators are equipped with hydraulic quick couplers and use a number of buckets and attachments, which in many cases are switched several times each hour. There is always an element of risk when switching buckets and attachments. Dropped and swinging buckets can accidentally cause either severe personal injury or even result in fatalities. The reason for dropped buckets in most cases is driver related and can depend on many factors such as work stress, non-standardised lock manoeuvring, difficulty in determining whether the attachment is aligned correctly, uncertainty in the position of the locking bolts. OQLS minimises all these problems and gives the operator



safe and secure support for the right decisions when switching buckets and attachments.

www.oilquick.com

Next generation Rototilt 'QuickChange'

Technology development in the construction industry continues, with efficiency and ergonomics increasingly going hand in hand. A new example being the new generation of fully automatic Rototilt quick coupler systems that introduces new innovative benefits for machine couplers, tiltrotators and tools. "I was sceptical

at first, but this is as different as night and day," says Matti Ainasoja of Lindbergs Last & Planering, who has used Rototilt QuickChange for two years. "The fully automatic quick coupler system brings a huge increase in efficiency, as excavator operators never have to leave

the cab to switch between different hydraulic tools," says Sven-Roger Ekström, who adds, "At the same time, safety significantly increases as no one has to be around the machine during tool changes. Rototilt has also integrated the 'SecureLock' solution into the new



The Rototilt fully automatic quick coupling system.



Robert Viklund at Viklunds Gräv AB.

system, which entails that the machine operator gets a clear acknowledgement that the tool under the attachment is correctly connected thanks to the built in lock sensor in the cylinder.”

One of Rototilt's goals has been to develop a system able to handle the high flow tools available on the market. Its own tests and measurements also show that this goal has been achieved by a wide margin. Both the test operators who have tried Rototilt QuickChange in advance of release, and customers who are now investing in the new technology, have said to welcome the system. “It's a whole new world, a very stable quick coupler with automatic coupling of hoses that means I never have to leave the cab to change tools. Those who can never imagine investing in this technology shouldn't test it either, because once you have, you can't be without it – that's how good it is!” says Johan Lindberg at Lindberg's Last & Planning in Norsjö with a smile. His colleague Matti Ainasoja agrees: “I'm a bit traditional and at first I was quite sceptical. But now that I've been using it for two years, the feeling is a bit like when you've just got your driver's license – freedom! In addition, I can quickly set the tiltrotator and mount tools directly on the system's machine coupler, getting extra power when, for example, I'm going to be using a tooth bucket or ripper.”

The time aspect is another benefit: “I save several hours every day,” says Robert Viklund, Viklunds Gräv AB. “But the most important thing isn't time, but that the job is done safely and correctly.” Another benefit for operators is that Rototilt QuickChange is based on the open standard for fully automatic quick couplers for excavators, Open-S. It is a further development of the symmetrical quick coupler standard for excavators, the S standard, which gives machine operators and contractors freedom of choice when it comes to combining tiltrotators with tools from different manufacturers. “We believe in healthy competition, where industry players compete to have the best products, not to lock customers into a closed interface,” says Anders Jonsson, CEO Rototilt, who along with Steelwrist is the initiator behind Open-S. “If the customer buys a tiltrotator from Rototilt, they should feel confident that all hydraulic tools that comply with the Open-S standard will work together.”



Steelwrist and Volvo.

Open-S is owned and administered by an independent organisation, the Open-S Alliance, which in turn is led by a council of engineers from a growing number of member companies.

www.rototilt.com

Steelwrist adds SQ90 to the range of fully automatic quick couplers

The global demand for fully automatic coupler systems continues to grow in both the demolition and construction industry. During 2021, Steelwrist introduced the SQ90, so far the biggest model in the range of 'SQ' 'Auto Connection' quick couplers. The SQ90 is targeted toward excavators up to 70t in the demolition industry. After the very successful SQ Auto Connection quick coupler launch in 2017, the range today includes SQ60, SQ65, SQ70, SQ70/55, SQ80 and SQ90. Steelwrist SQ couplers are said to be appreciated by customers for the increased safety and ability to change hydraulic powered work tools in seconds without leaving the cab. The addition of the SQ90 coupler meets the demand from the demolition industry where many and fast work tool changes are common.

“The Steelwrist SQ Auto Connection quick couplers have been appreciated by the customers from day one onwards. In the demolition industry, with its frequent work

tool changes, it is all about using the right tool for the right job at the right time. SQ allows operator and machine to work continuously at all times and work safety increases when operators can easily change and use the best tool for the job,” says Stefan Stockhaus, CEO of Steelwrist AB. SQ90 as well as all other Steelwrist SQ products, follow the global Open-S industry standard for fully automatic couplers for excavators. The standard makes it

easier for machine operators and contractors to choose quick couplers, tiltrotators and work tools from different manufacturers and be confident that they function together.

‘Front Pin Lock’ from Steelwrist is a mechanical lock of the front shaft which significantly limits the risk of an unintended drop of work tools. With Steelwrist's entrance into the demolition segment, the patented Front Pin Lock technology has been upgraded to a second generation in order to support the heavy demolition work tools. Furthermore all SQ couplers come with ‘QPlus’ technology which enables higher hydraulic flows with less pressure drops than many other systems on the market.

Other news from Steelwrist is that Steelwrist and Volvo CE are continuing to develop the partnership that started more than a decade ago when Steelwrist became the preferred supplier of true factory mounted

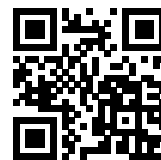




DRY DRILLING – FAST, EFFICIENT AND CLEAN.

**New at TDBS: Dry drilling tubes
with spiral grooves.**

- Supports the removal of the grit out of the hole being drilled
- Reduces the risk of the drill bit being stuck in the concrete
- Reduces the risk of the diamond segment over heating



Scan the QR-Code
and discover
the world of TDBS

www.tdbs.de

T.D.B.S. Handels GmbH
Trägersysteme für Diamant-,
Bohr und Schneidwerkzeuge

Phone: +49 (0)2191/58909-0

Steelwrist and Sandvik, Rammer.



powered work tools and mechanical work tools, from the comfort of the cab.

Steelwrist has also announced that it has signed a cooperation agreement with Demarec for SQ fully automatic quick coupler systems for Demarec products and SQ quick couplers. Demarec is one of the major manufacturers of hydraulic attachments for the demolition and recycling industry. With more than 25 years of experience in the sector, Demarec has been successful in answering market demand with innovative technology and expertise. Furthermore, Sandvik and Steelwrist have entered into a cooperation agreement for full automatic work tool adaptors for Rammer hydraulic hammers. As the global demand for fully automatic coupler systems is rapidly increasing, Sandvik started offering Steelwrist SQ-type adaptor plates directly from the factory during the third quarter of 2021. The deliveries from Sandvik will be compliant with the global Open-S standard.

www.steelwrist.com

SMP Parts new

member of the Open-S collaboration

The Open-S Alliance works towards the global interchangeability of hydraulic work tools for excavators, and is a manufacturer independent organisation. Membership is available as either full, associate or supporting level depending on if Open-S products are developed, produced in house or sourced. The alliance was initiated by Steelwrist and Rototilt. In November, 2021 SMP Parts was the latest company to join the Open-S

Alliance and the third manufacturer of tiltrotators and quick couplers to become a full member. SMP Parts is a manufacturer of tiltrotators and quick couplers with complete mounting systems for excavators. The company operates in Sweden, Norway, Finland, Denmark, Germany, UK, Spain, US and the Benelux countries, with a number of dealers in each country. All development and manufacturing are carried out at the main headquarters and factory in Ilsbo, Sweden.

"We have had a clear goal at SMP Parts, to be one of the suppliers included in the Open-S Alliance, precisely because it both increases our competitiveness and because it gives our end customers more opportunities to use SMP products," says Mattias Andersson, chief technical officer at SMP Parts.

www.opens.org



The Open-S alliance.

tiltrotators and quick couplers fitted to Volvo excavators. As the demand for fully automatic quick couplers on excavators continues to grow rapidly, Volvo CE is now expanding the offering with Steelwrist SQ Auto Connect quick couplers directly from the factory for both crawler and wheeled excavators between 13t and 35t. The launch also includes work tool adapters in matching sizes. With the fully automatic SQ quick couplers operators can efficiently and easily change between tiltrotator, hydraulic



**GIVE IT
A DRY.**



**CLEAN CORE DRILLING
WITHOUT WATER.**

KERN-DEUDIAM Premium Diamond Tools and Machines

We developed and made UNIX[®] and BETO in Germany, to make your core drilling missions easier, cleaner and faster. Even drill into reinforced concrete without the use of water. Enjoy stress-free work, exactly where cleanliness is most important. Give it a dry. Get in touch with us. Visit www.kern-deudiam.de

**MADE IN
GERMANY**





THE ORANGE EVOLUTION²

WIDER OPTIONS | DEEPER EXPERTISE | UNITED TO SERVE YOU

OVER THE COMING YEARS, THE BLASTRAC PRODUCTS, SERVICES, AND SOLUTIONS WILL BE REBRANDED AS HUSQVARNA AND INTEGRATED INTO THE GLOBAL HUSQVARNA OFFERING. THIS MEANS THAT YOU WILL STILL GET THE PRODUCTS YOU PREFER FROM THE SAME TRUSTED PARTNER BUT IT WILL GIVE US THE POSSIBILITY TO ACCELERATE INVESTMENT IN INNOVATION AND HELP YOU TO GROW YOUR BUSINESS.



FLOOR GRINDERS

FOR GRINDING AND POLISHING OF
CONCRETE AND OTHER SURFACES



SCARIFIERS

TO LEVEL OR REMOVE
THICK COATINGS



FLOOR SCRAPERS

FOR REMOVAL
OF FLOOR COVERINGS





LOAD STARS

It is one thing to muddle through the day to day challenges of a pandemic, but muddling through job after job using less than the best equipment won't earn a contractor much profit, or future job opportunities.

So, with the return of trade shows on the horizon, why not start making plans now to give your equipment fleet a fresh look, with compact loaders and skid steers being a great place to start. Packed with both power and features to boost productivity, these mighty-mites are sure to become go to machines for all kinds of projects in all kinds of locations. You'll be working safe—and working smart!

Komatsu's new all-rounder with the latest EU Stage V Engine

The all-new Komatsu WA70M-8 compact wheel loader delivers what the company says are such features as first class operator comfort, optimum visibility, outstanding safety levels, an ergonomic interface, effortless operation and a bold contemporary styling for a strong distinctive visual presence. Combined with 'Komtrax', which allows owners to monitor all machine functions remotely, the WA70M-8 also features a hydraulic quick coupler, 'Easy Fork' kinematic and a wide range of attachments.

The WA70M-8 is equipped with a powerful Komatsu low emission engine and diesel particle filter (DPF) which complies with the EU Stage V regulations. Engine power has been increased by 25% vis a vis the previous model and now reaches 46.2kW. Optimised for tough construction applications, its fully automatic hydrostatic transmission sends power to all four wheels. High torque with the low rpm engine setting gives fast uphill travel performance thanks to stronger engine power. The operator can also rely on Easy Fork kinematic to transport loads with Komatsu pallet forks parallel to the ground without readjusting the fork tines. Operators still benefit from the 'Z-bar' kinematic, with high

breakout force and fast and easy bucket filling for easy machine handling.

Thanks to the wide opening engine hood and tilt-able cabin, all service points are easy to access. A 6,000h cleaning interval typically makes the DPF maintenance free for 10years. The newly designed engine boosts performance and helps to achieve low fuel consumption in every application. The engine hood opens widely for a quick daily inspection, the electric equipment is well protected behind a maintenance cover, and the easy to clean wide core radiator, with an optional reversible fan, is conveniently accessible.

www.komatsu.eu

Bobcat launches M3-Series compact loader line

To meet a variety of customer needs and budgets, Bobcat has launched the new M3-Series compact loader line.



Four new skid steer and compact track loader models are now available in North America.

The four new model loaders comprise of the S510 and S590 skid steer loaders and the T550 and T595 compact track loaders. The line was developed to specifically support customers who are looking for more practical features, while complementing the R-Series line. Building on the established M2-Series loader, the new M3-Series is designed with the Bobcat turbo charged diesel engine, an innovative new fuel system, simplified configurations and fewer ancillary options combined with new modern decal styling.

All models are powered by 2.4l Tier 4 Bobcat engines with an innovative new fuel system, offering a range of 41kW-94 kW. The engine meets Tier 4 regulations without a diesel particulate filter (DPF), reducing downtime that occurs with DPF regeneration and long term DPF maintenance costs. The high efficiency hydraulic pumps are configured precisely for each model's specific operating capacity and matched to cylinder size and loader lift capacity. This provides better breakout forces and faster cycle times. Bobcat engines also feature a robust combustion chamber that can handle greater pressure and produces more usable horsepower and torque for optimised performance when operating a variety of attachments.

The M3-Series' durable, patented lift arm design and a choice of lift paths helps meet the unique needs of each jobsite. The S510 and T550 models feature a radius lift path to provide maximum reach truck bed height. The S590 and T595 models offer a vertical lift path for higher lift capacity and to achieve more reach at full lift height, keeping the load closer to the machine

COMMITTED TO FLOOR GRINDING AND POLISHING TECHNOLOGY

www.ashinediamondtools.com



With a strong R&D team, consistent quality,
and professional customer support,
Ashine enhances customer advantages in market
competition to strengthen long-term collaborative partnership.

ASHINE
Grinding & Polishing Expert

SOLUTIONS FOR LEADERS

MADE IN GERMANY



**Elektro-
werkzeuge**



DUST FREE CHANNEL CUTTING!

Up to 50 mm (2") wide and up to 45 mm (1,8") deep in one cut

STRONGEST DRY CORING SOLUTION ON THE MARKET!

2-gear dry coring in concrete with rebar up to diameter 300 mm (12")

STRONGEST MIXER ON THE MARKET!

GIANT 120 - mobile mixing station for quantities up to 250 kg (550 lbs)

Maschinenfabrik OTTO BAIER GmbH - Heckenwiesen 26 - 71679 Asperg - Germany
Tel. +49-7141-30 32-0 - info@baier-tools.com

www.baier-tools.com

DIAMOND
Hire & Sales



info@diamondhiresales.co.uk



01252 524141



www.diamondhiresales.co.uk



while the loader arms are raised. An innovative new fuel system makes low fuel levels more forgiving. Cold weather operation is improved and a variety of features, including a self-priming pump and a new fuel pre filter, make maintenance and service more convenient. Additional standard uptime features include automatic machine shutdown, on board diagnostics and battery run down protection to monitor engine, hydraulic and battery functions.

www.bobcat.com

Volvo's electric avenues

The L20 compact wheel loader is part of Volvo Construction Equipment's growing range of electric machines aimed to provide a cleaner, more silent and more comfortable work environment while also meeting the company's ambition to have at least 35% of its total range of vehicles fully electric by 2030.

The 'L20 Electric' is a proven concept based on the larger 'L25 Electric'. It features a 1.8t payload and a parallel type linkage offering enhanced visibility of the attachment being used, good lifting height, as well as 100% parallel movements making it a perfect fit for fork applications. Expected to deliver up to 6h of active work per charge, the electric machine comes with a choice of battery packs (33kWh or 40kWh). Maintenance is said to be reduced by 30%, whilst the near silent motor provides quieter working conditions. New automatic park brakes with hill hold functionality, as well as a range of customisable work modes, are included.

The machine comes with an integrated on board charger allowing for full charging in under 6h. Using the optional fast off board charger, a full charge can be made in around 2h. Volvo dealers are said to be able to calculate the expected operating time and optimum charging solution based on customers' activities. The new model enables operation in noise sensitive areas and out of standard hours, as well as on low carbon projects and indoors without the need for costly fume extraction systems.

www.volvoce.eu/electric-machines

ASV expands 'Max-Series' skid steers

ASV's Max-Series has been expanded with the addition of the vertical lift VS-75 and radial lift RS-75 skid steers. First introduced with compact track loaders in mid-2020 to give operators a premium experience, the new skid steers benefit from a new, next generation cab

available with 360° visibility, a roomier operator area, a more comfortable seat, a new high tech touch screen display and more. The skid steers also feature proven ASV benefits, including reliability, rated operating capacities, departure angles, breakout force, hydraulic performance, ground clearance, speed, ease of serviceability, cooling packages and more.

The RS-75 includes a 1,179kg rated operating capacity and a 26kN breakout force, while the VS-75 features a 26.3kN breakout force and a 1,588kg rated operating capacity. Both are equipped with 56kW engines. The VS-75's high capacity is said by the company to rival many larger units, but with high levels of fuel economy. Both models are designed to navigate obstacles efficiently thanks to 267mm of ground clearance, which the company states is more than 51mm higher than any machine in their class. In addition, the purpose built chassis improves performance while climbing hills. Operator efficiency has been considered with a number of comfort and usability features available to be added to the basic configuration. Features include an optional fully suspended seat, one sided lap bar for easy entry and exit and a roomier cab.

Operators also benefit from a cleaner, quieter and more temperature stable work area with the optional

highly pressurised, all weather cab. The latter's improved seal helps repel noise, dust and debris and outside temperatures. An updated HVAC system allows for better overall circulation and defrosting capabilities within the cab. The cab also features a number of reliability improvements, including a design that better protects electronics with fully sealed, water tight wiring harnesses and fuse panels. The machines maximise serviceability with convenient and simple maintenance access. Swing out door and cooling systems provide access to filters and other daily checkpoints for easy maintenance.

www.asvi.com

New Holland launches its largest, most powerful CTL to date

New Holland Construction has expanded its compact track loader offering with the new C362. Offering rugged construction, power and performance, the C362 has an 85kW engine, a rated operating capacity of 2,81kg, and a breakout force of 57.4kN, and has been designed to tackle any project. The C362's new frame design has a heavy duty steel rear door and rear hood. Bucket cylinders are mounted on the front of the boom arms to increase ingress clearance and add to bucket breakout force.





FAST CUT NO FUSS

Diamond saws for excavators and robots

Concrete | Wood | Rock | Fibreglass | Steel

**Faster and safer than road saws,
wall saws & handheld tools.**

Saves you time and money with

**Low setup time
Low vibration
High productivity**

Australia: +612 9980 7779

Europe: +420 604 381 910

www.echidna.com.au

sales@echidna.com.au



The patented New Holland 'Super Boom' vertical lift has been designed to optimise the C362 for lift and carry operations. With greater dump reach and height, customers can easily load high sided truck boxes or hoppers. Full 360° visibility comes with the C362's low profile Super Boom arm and shoulder design, an integrated rear camera and new LED front work lights. Increased visibility is provided with the C362's large glass door, lower front door threshold and transparent area on the cab roof.

The low-profile undercarriage design eases cleanout, reduces noise, and increase durability. It also provides an extended track life and smoother ride due to the steel-embedded tracks rolling on the rubber instead of steel. An in cab 203.2mm LCD display provides operators with engine settings and performance information, whilst 'EZ EH' custom screen settings allow for easy navigation and quick operation adjustments. The display also provides visibility to the rear of the loader for an efficient, safer operation.

The C362 is also built with electro hydraulic controls featuring multiple speed and sensitivity settings, including 'creep mode' and automatic straight line tracking. Creep mode is a slow speed option that gives the operator greater control for slow speed operations such as trenching and cold planing with speed thresholds of one to 100 increments. Automatic straight line tracking improves productivity and precision as it keeps a straight working and traveling path in uneven terrain.

For regular service or maintenance, the C362 allows for easy access to the engine. The rear door and hood provide quick service entry for daily and periodic maintenance. All major service points can be accessed by tilting the cab forward.

www.newholland.com

Gehl's new RT135 CTL

Gehl has introduced the RT135 track loader, a 612kg capacity machine. The Gehl RT135 delivers power in a compact fashion, at an overall width of 1,448mm and height of 1,930mm, and a lift height of up to 2,794mm. With an operating weight of 2,953 kg, the RT135 can be easily transported, making it an ideal machine for

the rental industry and construction sites. The Gehl RT135 is powered with a 34.7kW Yanmar engine that utilises automatic regeneration and zero fuel additives, providing cleaner emissions. In addition, built on an adapted R135 skid loader chassis for superior weight distribution and grading, the Gehl RT135 is designed for any jobsite.

Equipped with Level II FOPS, the RT135's cab provides a robust operator station as well as high levels of visibility on all sides of the machine for precise material placement. The 'IdealTrax' track tensioning system is designed to reduce maintenance and track replacement costs by automatically tensioning the tracks when the engine is on, eliminating the chance of over tensioning and extending the life of the tracks. Track tension is released when the engine is turned off, reducing strain on sprockets and bearings. The system also eliminates the need for manual tensioning of the tracks and daily tension checks.

The Gehl RT135 track loader is compatible with most allied attachments. An optional 'Power-A-Tach' system engages and disengages an attachment without

the operator having to leave the cab, providing an increase in efficiency and safety. Additional optional features on the RT135 include a back-up camera and a self-levelling hydraulic lift that keeps the attachment level throughout the raise/lift cycle.

www.gehl.com

New compact wheel loaders from Sany

Sany's new four model line of compact wheel loaders includes the SW105 and SW115. The SW105's 5,400kg operating weight is powered by a 53kW Yanmar 4TN-V98C engine, while the 6,270kg SW115 has a 58kW TD 2.9 L4 turbocharged Deutz engine. For smaller applications, the smaller SW075 and SW085 are equipped with the Stage III Yanmar 4TNV88 engine. Their larger sister models are fitted with Stage V-compliant engines, with bucket capacities ranging from 0.7m³ to 1.1m³. The range comes with many well-known Sany key components. The standard configuration includes a hydraulic quick coupler and safety valves whilst the corresponding preparation for road homologation, such as TÜV certification, is also available. In addition to the high specification features as standard, the wheel loaders benefit from oscillating rear axles, which are normally found only on larger machines, to increase stability.

www.sanyeurope.com

New anti-vibration undercarriage for John Deere 333G CTL

Expanding on its wide offerings of optional machine enhancements, John Deere has introduced an anti-vibration undercarriage system for the 333G compact track loader. Designed to reduce machine vibration and increase operator comfort, the anti-vibration undercarriage system was created as a solution to combat operator fatigue and enhance the user experience, helping operators to remain focused on the job at hand. Key features



of the anti-vibration undercarriage system include an isolated undercarriage, bogie rollers, updated grease points, hydrostatic hose protection shield and rubber isolators. By utilising an anti-vibration suspension at the front and rear of the track frame and absorbing shock through the rubber isolators, the machine also provides a smoother ride for the operator. These features also enable the machine to travel at higher speeds while retaining material on the job, and permit the machine to flex up and down, further creating a more comfortable operator experience, ultimately helping reduce operator fatigue.

Designed with productivity in mind, the new bogie roller system allows for oscillating movement of the rollers, promoting smoother transitions when cresting a hill, improved stability on uneven grounds, and enabling larger debris to pass between the roller and track system. This updated design also features a new oscillating bogie arm, further enhancing operator efficiency. The design includes only four new grease points which are easy to access meaning operators can spend more time being productive.

Additional operator focused enhancements include a new angled steel shield to protect the hydrostatic hoses from exposure to debris. Additionally, rubber isolators were implemented to offer longer track life and allow easier repairs compared to other competitive solutions. The anti-vibration undercarriage system is now available on zig zag bar tracks on the 333G compact track loader models.

www.johndeere.com

Wacker Neuson's versatile WL34 wheel loader

The WL34 wheel loader from Wacker Neuson is designed to be a multifaceted and manoeuvrable machine that can move a great deal of material. It combines power, reliable hydraulics and compact dimensions with mature technology. Powered by a 45kW Deutz TD 2.9 L4 Stage V engine, the WL34 features a .62m³ bucket capacity, a conically tapered load arm for view-



ing transported items, and carefully arranged service accesses in the cabin to minimise maintenance times. It also possesses a hydrostatic all-wheel drive system, and central service and parking brake in the drive train that acts on all four wheels. The operator's cab includes a fully damped comfort seat with safety belt, weight, back and height adjustment, adjustable steering column and front and rear work lights.

www.wackerneuson.com

Takeuchi launches new attachment programme

The new Takeuchi-US 'Attachment Program' offers a full line of Takeuchi branded attachments for each of the manufacturer's product lines – compact excavators, compact track loaders and compact wheel loaders. Takeuchi partnered with several market leading attachment manufacturers to provide attachments

in five categories: land and vegetation management, construction management, agriculture management, snow removal and brooms. Altogether, there are nearly 40 different attachment families available ranging from buckets to forestry mulchers to snow blades and much more in between. Many attachments come in various models and sizes for a customisable solution for nearly any machine application.

Takeuchi's full featured attachments offer standard configurations including bolt on cutting edges, connect under pressure quick couplers, heavy duty cylinders and optimised controls. Performance matched attachments have flow requirements and operating parameters that are matched to compatible machines for optimal performance. Takeuchi provides hose lengths with connect under pressure couplers on hydraulically operated attachments for fast, easy connections.

www.takeuchi-us.com/attachments



Volvo prototype LX03: the intelligent future of construction

This fully autonomous, battery electric prototype by Volvo Construction Equipment is the first real world example of a self-learning concept wheel loader with the brains to make decisions, perform tasks and interact with humans. It is also the first time ever a Lego Technic model has been turned into a real machine. While not commercially available,

engineers expect that valuable insights from the LX03 will feed into applications for today and tomorrow.

Inspired by a concept devised by Volvo CE and Lego Technic engineers and designers, the Volvo LX03 is a remarkable milestone breaking new ground in smart construction technology. It represents both the

next stage in Volvo CE's exploration into machine intelligence and its determination to decarbonise the construction industry. What started out as an exciting project between designers and engineers at the two companies to explore the potential for future construction, evolved over time with the help of a team of children into what became the successful launch of the '42081 Lego Technic Concept Wheel Loader Zeux'.

The prototype LX03 has been built by a dedicated team of engineers, programmers and workshop technicians from Volvo CE sites in Eskilstuna, Sweden and Konz, Germany, in collaboration with the design team in Gothenburg, Sweden. It is a 5t wheel loader that has been developed as a modular concept, with the capability of being made larger or smaller with just one or two changes to the manufacturing process. It also shares its driveline with the 'L25 Electric', making it a zero emission, low noise machine with a run time of up to 8h, depending on its application.

The LX03 is designed to be a smart and safe worker, equipped with a brain that has the capacity to adapt to different scenarios, to make decisions in real time, and, most importantly, collaborate with humans. It can be programmed by customers to complete heavy, repetitive, or dangerous tasks, thereby reducing the need for a human on site.

janser

Professional Flooring Technology

German Quality



Floor Scrapers to suit any application!



Ride-on ADB HS
1180 kg

Ride-on ADB
950 kg

Ride-on Electro
656 kg



Power-Stripper
14 kg



COSMO IV
39 kg



MASTER MOBIL III
105 kg



STRATO MOBIL IV
190 kg



JUNIOR Ride-on
420 kg

Your projects - our equipment - your success!

Janser GmbH

Böblinger Straße 91 Tel. +49(0)7034-1270
71139 Ehningen info@janser.com
GERMANY www.janser.com



OKADA

www.okada-aiyon.com

4-1-18, Kugan-dori, Minato-ku, Osaka 552-6522, Japan Tel: +81-(0)6-6576-1266 Fax: +81-(0)6-6576-1516 Email: okada@aiyon.co.jp

Visit
www.pdwworld.com
for more
news and information

RONDA® VACUUMS FOR LIFE



Heavy duty vacuum cleaners with filter technology second to none



DUST EXTRACTORS H-CLASS

RONDA® 200H Power



DUST EXTRACTORS H-CLASS

RONDA® 1800H Power



VACUUM CLEANERS H-CLASS

RONDA® 2800H



WATER SLUDGE RECYCLING

RONDA® 350

A large step towards a healthy work environment

V. BRØNDUM A/S

See the full range of RONDA® vacuum cleaners on www.broendum.com



MCCLOSKEY ENVIRONMENTAL FOCUSES ON RECYCLING AND ENVIRONMENTAL SOLUTIONS

McCloskey International has announced a new brand identity and business unit that will reinforce its commitment to the waste recycling sector worldwide. This business will move forward under the new brand of McCloskey Environmental (MCE).

The world is facing some major challenges. Climate change combined with the ever rising demand for energy and raw materials are all placing the environment under increasing strain. To prevent these challenges from resulting in a hopeless situation, long term solutions are required. The primary task of McCloskey is to make a positive contribution to meet these challenges. The strategy for the new division is built on partnership with companies that have the expertise to deliver solutions that maximise profit and deliver exceptional performance. Together with these companies, McCloskey Environmental will design and manufacture a full range of environmental products including shredders, trommels and stackers.

Speaking about the launch, McCloskey product line director, Ben Frettsome, said; "Our customers are always seeking modern, flexible and cost effective waste processing solutions. Our customer driven approach to product development has led us to invest significantly in the establishment of this new business unit, focused on the design and manufacture of high quality recycling equipment. The products produced by McCloskey Environmental will deliver significant advantages to customers, including lower cost of ownership, lower cost of production and ease of operation and maintenance."

Fergal Mallon, product line manager, McCloskey Environmental added: "McCloskey is leveraging their engineering experience to develop new equipment for the global recycling sector at a key time. It's time for a smarter approach to waste processing and to collaborate with customers." Global requirements are becoming more stringent and McCloskey believes it is in the perfect position to provide recycling products and solutions to assist customers in meeting these standards. Over the past twelve months a team of highly skilled and experienced

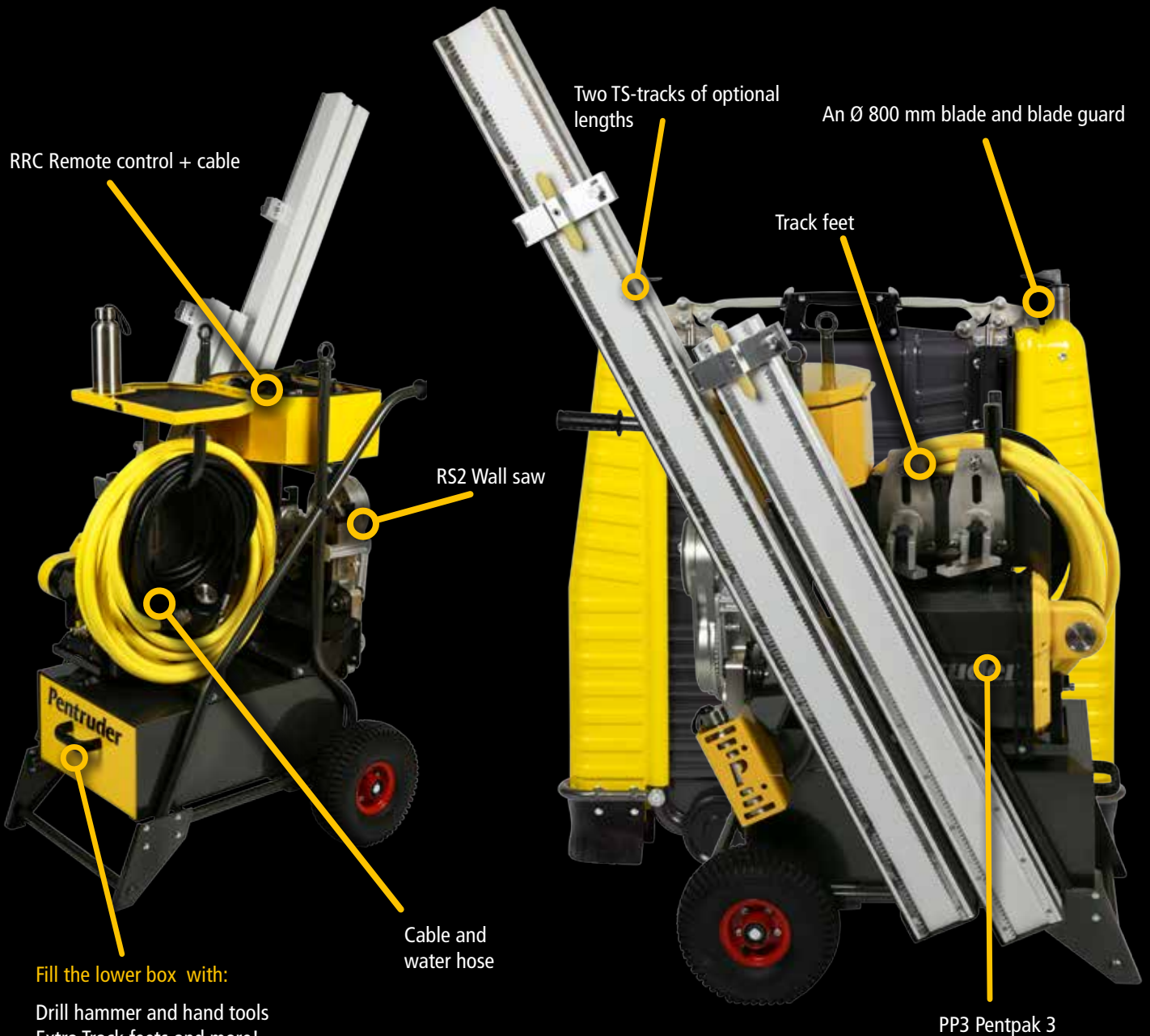
design engineers have developed an impressive range of smart solutions for the sector. Mallon added: "Looking ahead, we are very optimistic about the future of this division and the strong position we are in going into 2022. We have an exciting list of products introductions and strong partnership announcements in the coming months."

Headquartered in Northern Ireland, McCloskey Environmental aims to develop smarter solutions for partners across the globe to facilitate a sustainable future. The professional profile of the recycling division has grown and evolved from a solid legacy and the new brand and alignment reflects a commitment to the future and to customers who seek leading edge products and services to grow their business. McCloskey International now produces a complete line of equipment including crushers, screeners, stackers, and washing systems. The products are used in a wide range of industries which include aggregates, landscaping, infrastructure and road building, construction and demolition, mining, waste management and recycling.

Since 1985 McCloskey International states that it has established a worldwide reputation for high performance products that have introduced many of today's key mobile screening and crushing innovations. As of 2019, McCloskey is a part of Metso Outotec. Metso Outotec has a long focus in sustainable technologies, end to end solutions and services for the aggregates, minerals processing and metals refining and recycling industries globally. Headquartered in Helsinki, Finland, Metso Outotec employs over 15,000 people in more than 50 countries and its pro-forma sales for 2020 were about €3.9B. The company is listed on the Nasdaq Helsinki (mogroup.com, twitter.com/metsooutotec) and ranked 8th on the global 100 list of the world's most sustainable companies.

Pentruder[®]

HFI TROLLEY



Measurements:

Width:	67 cm
Depth:	98 cm
Height:	117 cm

Pentruder[®]
CONCRETE CUTTING SYSTEMS

Pentruder - designed and manufactured by:
Tractive AB | Gjutargatan 54 | 781 70 Borlänge | Sweden
www.pentruder.com | contact@pentruder.com

A large stadium in India coming down.



DEMOLITION IN INDIA

getting slowly back on track

For more than two years the Covid-19 pandemic has been a strain on the world but in most countries, life has been carrying on anyway, maybe not all at the same speed, but still showing signs of life. PDi Magazine recently talked to Mohan Ramanathan, founder and current president of the Indian Demolition Association about the situation in India.

PDi's Jan Hermansson recently spoke to Mohan Ramanathan, managing director of ACT, Advanced Construction Technologies in Chennai, and founder and current president of the Indian Demolition Association (IDA). IDA is quite a young association being inaugurated in November 2019. Parallel with the first meeting and convention the Demtech trade show was organised in Mumbai on 13 November of the same year. We asked Ramanathan to describe the Indian demolition industry as it was in 2019 when the association was founded.

Striving to become an industry

"The Indian demolition business was not really an industry in 2019. It was fragmented with mostly foreign manufacturers and Indian contractors. There are no Indian manufacturers of demolition equipment at all, besides a few manufacturers of diamond tools. Practically, most of the important equipment is imported. This makes the capex high. Also, most contractors have learnt the techniques on the jobsite. Very few contractors have undergone formal training. Demtech 2019

brought some visibility and respect to the business and the convention and tradeshow in itself was the starting point of the Indian demolition industry, how I see it.



Mohan Ramanathan, founder and president of India Demolition Association and managing director of the company Advanced Construction Technologies (P) Ltd.

But unfortunately, Covid-19 set us back and we lost the advantage of the event and the traction it could have given," comments Ramanathan.

However, even if IDA lost the advantage gained from the event due to the pandemic, the response from the Demtech convention and tradeshow was very upbeat and positive. "I am very sorry that we couldn't capitalise it as India went for shut down more or less immediately after the event. During the pandemic more or less everything has been kept on hold which has resulted in that we have not managed to increase the member numbers significantly in the association," says Ramanathan.

High death toll

Ramanathan thinks that the Indian Government has handled the pandemic very well. He explains that it all started with a panic among the Indians, an overload of information and then pure fear. A large number of deaths followed, and people shut themselves inside their homes. Offices and factories in India were initially closed for three months. "This was really the worst time

The best
is yet to
come!

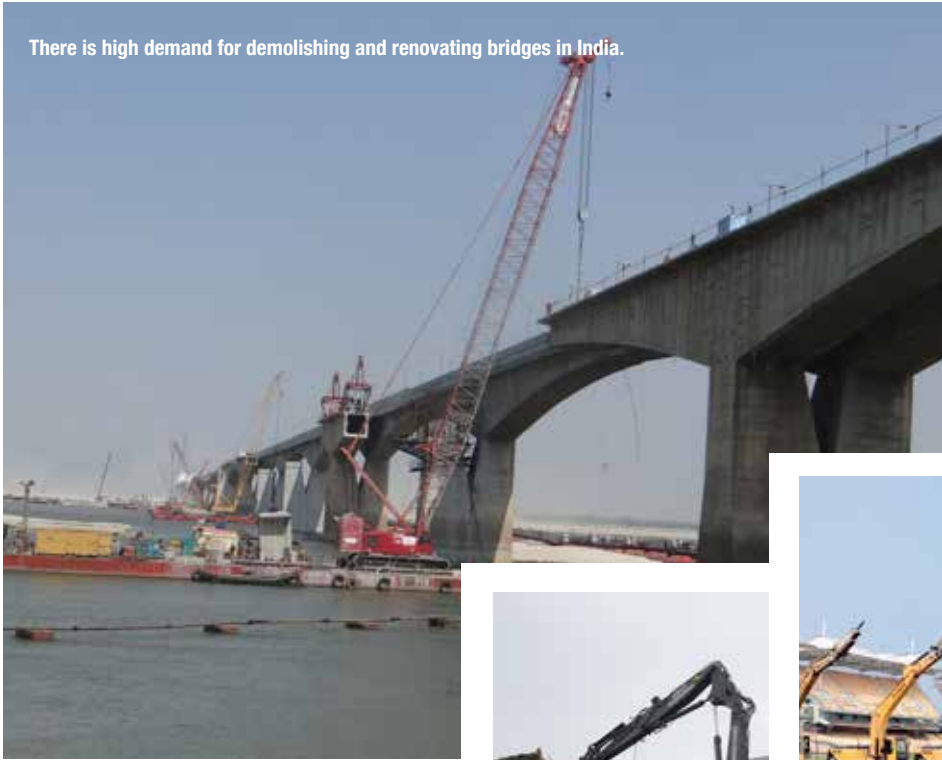


Scan the QR code to learn more about our history.

The covered path is quiet long by now, but the most beautiful step to do is always the same: the next one.

*Trevi Benne: **with you towards future, for 30 years.***

There is high demand for demolishing and renovating bridges in India.



Deconstruction of a petroleum refinery in India.

India has experienced in modern times. Then the second wave came and now we are in the third wave with the Omicron mutation. WFH or 'Working From Home' became a way of life. Double vaccination targets were met rapidly and now in February 2022, we are actually looking up to the future," says Ramanathan. Currently the numbers of people infected are clearly going down, but official government figures says that over 511,000 Indians have died so far during the pandemic. These consist mainly of old people and people with low immunity, with the southern parts of India being less severely affected than other areas.

Despite the difficult situation, the last two years in India have seen a lot of demolition projects carried out according to Ramanathan. Not as many as during normal circumstances, but still quite a good number of projects with a number of old bridges and structures being demolished. A 150 year old bridge over rail tracks was demolished using a diamond cutting system. An old bridge from the British era near Pune was blasted during pandemic as well as five multi story buildings in Kochi. There has also been a number of demolition projects of jetties and port structures, with similar projects carried out across India.

Ramanathan states that there is a trend in India that has seen many industrial plants and thermal power plants closing down, with Ramanathan having identified at least 40 plants that are set to be demolished. "I think that the demolition industry has been quite busy during the pandemic compared to manufacturing. Of course, several smaller contractors have been affected quite hard and even bankruptcies have occurred due to that they had to let people off. This has happened to all types of business in India," says Ramanathan.

Sales of construction machinery and equipment is picking up

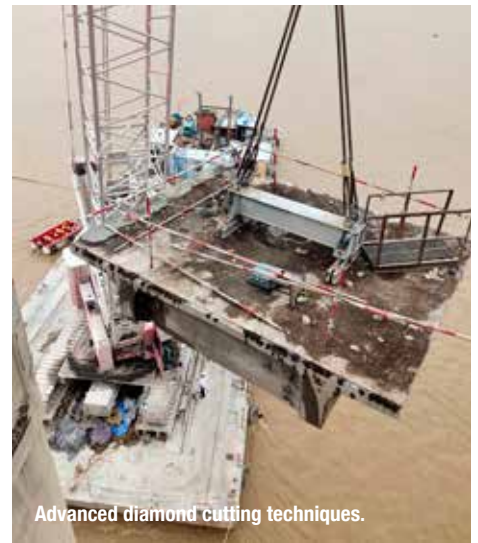
In terms of sales of construction equipment, and sales in general, the market was very much down in 2019



Various demolition techniques are used.



A nice line up of demolition equipped excavators used in a cricket stadium demolition.



Advanced diamond cutting techniques.

and early 2020. But strangely in Q3 and Q4 2020, and the whole 2021, sales of machinery started to pick up again and the sales of spare parts were also good. "The Indian government also announced huge spending on infrastructure, and this gave a boost to machine sales. In 2021 this has improved sales and we are very optimistic about sales in 2022. The main drivers are new highways, high speed railways, ports and airports. There is also an increase of new production facilities all over as many investors are looking at moving out of China to India," says Ramanathan.

Mohan Ramanathan is actually very optimistic about the future for the Indian demolition industry. "It actually looks very bright and with IDA we have something very good going. There are tons of infrastructural projects in the loop thanks to the governmental spending on infrastructure in the country. There are also a number of modernisation projects on production plants that also will generate a lot of jobs," says Ramanathan. In terms of contractors working in demolition and advanced concrete cutting, the numbers have not changed that much during the last two years. According to Ramanathan, there are around 10 really big demolition contractors and maybe 200 medium to large contractors in the

country as well as 500 or so smaller companies spread across the country.

And what are the plans for second IDA convention and Demtech exhibition?

"Hopefully the next meeting in IDA can be held later in 2022 or in 2023. Everything depends of the development of the pandemic and when all restrictions will be lifted. It is hard to say when we can organise the next edition of Demtech. Before the pandemic broke out the plan was to hold it in Bangalore. We need to wait and see how things turn out," ends Ramanathan. Mohan Ramanathan can be reached at mohanact@gmail.com.

www.indiandemolition.org

**POWER TO
ACHIEVE**

**Exceed The Limits,
Cut Further,
Cut Faster.**



The **AGP® family of high frequency saws:
The only saws using PMSM technology for maximum performance.
6200 W input with 90% efficiency for 5600 W output!**



CS18



C18



R16



P8K

16 A with 3~ 380-480 V &
up to 32 A with 1~ 220-240 V



C406

AGP®

AGP Europe
+32 53 21 62 22
info@agp-powertools.eu
www.agp-powertools.com

AGP Taiwan
+886-5-5518689
info@agp-powertools.com
www.agp-powertools.com

Scan For More
Information



A BUCKETLOAD OF VALUE

Crusher and screening buckets are the kind of tools that quite literally turn waste into profit. Powerful and versatile attachments, they can be fitted on a carrier of any kind - excavator, loader or even telehandler - to process a wide variety of materials from construction and demolition waste to topsoil, turf, roots and compost. PDi's Andrei Bushmarin presents the latest news from this fast developing sector.

LET'S CRUSH & SCREEN IN THE ROCK.ZONE!

Germany-based manufacturer formerly known as Rokla, which last year got rebranded as Rock.Zone, keeps upgrading its portfolio of crushing and screening attachments. The crusher bucket range brand named 'Rockcrusher' currently includes four models that fit 12t to 35t carriers. Thanks to the in house 'Quattro Movement' crushing technology, the buckets produce a consistent cube shaped end product, which is immediately ready for re-use as aggregate. Other benefits include reduced wear on the jaw plates and the possibility to crush round shaped materials such as river rocks and pebbles. The reverse function allows the jammed material to be ejected at the flick of a switch. The bucket's side plates are replaceable to avoid wear on the crusher's frame. The new options include cover protection, a set of hand tools, bucket nose extension and longer hoses (2.5m instead of the regular 2m). The 'Rockscreener' series of screening buckets includes five models suitable for 9t to 39t machines. The Rockscreeners are said to have three major advantages over competition: the XXL hopper volume allows large quantities to be processed in one step; the XXL drum has a honeycomb structure for improved uniform screening and a maintenance free extra-large gearbox.

<https://rock.zone>



MB ATTACHMENTS AND TELEHANDLERS — A PERFECT FIT

Purpose built for material handling, telehandlers are often a machine of choice for jobs in tight urban areas. Their telescopic boom can be used as an access platform or a mini crane to lift and move around various materials. The four model 'MB-L' series of crusher buckets from Italy based MB Crusher effectively transforms a telehandler into a jaw crusher. Telehandlers can also

play the role of a screener when equipped with a new 'MB-HDS' shaft screening bucket. The biggest advantage of the MB-HDS attachment is that the rotating shafts can be changed onsite. Another winning combination is a telehandler equipped with a 'MB-LS' rotary bucket for fast and efficient screening.

www.mbcruiser.com



NO JOB IS TOO DIFFICULT FOR SIMEX SCREENERS

Italy based Simex has upgraded its 'VSE' screening buckets, available in four models for 8t to 45t excavators, with a new screening tool system called 'FIT'. It is composed of five independent parts designed to easily interlock with each other. They are easily replaceable without the need for removing the shafts, which leads to reduction in maintenance costs of up to 75%, since it is now possible to replace just one single disc or blade. The system allows multiple configurations depending on the material being screened. Simex provides users with three basic set ups, but more options are possible thanks to fully interchangeable screening elements.

A few examples of the new system in action include a VSE 30 screening bucket being used in the province of Modena, Italy, for the separation and recovery of materials following the demolition of a private home. The bucket separated the larger sized material (40mm-100mm) from the finer one (0-30mm) while sifting away debris and soil. The

VSE 30 was equipped with the FIT disaggregation tool, featuring a central blade, which also does some crushing of the concrete during the screening. In the county of Lancashire in the UK, an operator cleaned tons of topsoil from stones and gravel for landscaping purposes using a VSE 30 bucket. The final product was a fine size aggregate ready to be transported and reused. The coarse aggregates, greater than 55mm, were used directly onsite. In Bologna, a VSE 30 carried out a land remediation project around a construction site by selecting and separating soil from demolition waste. Sifting soil from stones, roots and debris made it possible to quickly restore the green area while reusing 100% of the material present onsite. Despite high soil humidity caused by intense rains in the days prior to the job, the production rate was still impressive, varying between 20m³/h and 25m³/h.

www.simex.it



ALLU LAUNCHES NEW 'DC SERIES' FOR THE CHINESE MARKET

In 2021, Finland based attachment specialist Allu opened its new manufacturing plant in China to cater for the needs of the local market. Following the commissioning of the facility, the manufacturer launched the new 'Transformer DC Series' tailored to the Chinese market. The Transformer DC Series are screening buckets for a variety of screening, crushing, mixing and aerating applications. All models come equipped with two hydraulic motors for maximised performance. The attachments have reinforced sides for work in the harshest environments. The Transformer DC Series offers two different blade options. Equipped with 'TS blades' the buckets are ideal for screening, separation and aeration applications. The TS blades rotate between the screening combs, with the resulting fragment size varying between 25mm and 50mm. The final product size can be adjusted by repositioning the screening combs. This allows users to get two fragment size options with the same bucket at no extra cost. The buckets that feature 'X-blades' are used for stabilisation, mixing, aeration and crushing. The design is clog proof, with production rates remaining high even with wet materials.

www.allu.net





Some of the Sonmak staff. Today the company employs 110 people.

SONMAK DIAMOND TOOLS

a Turkish recipe for success

As far as preconceptions go, Turkey is a country more readily associated with blistering sun, sandy beaches, sweet ‘Turkish delight’ and insanely aromatic coffee rather than manufacturing prowess. Well, Ankara based manufacturer Sonmak Diamond Tools does not care very much about such preconceptions. A world class player in the field of diamond consumables, Sonmak has been servicing professional contractors since 1975. Andrei Bushmarin reports on his visit to the Turkish toolmaker.

Unlike the compact and maritime Istanbul, Ankara is sprawled far and wide over the endless hills in the centre of the Anatolia peninsula. The Turkish capital has no sea access, which explains the lack of tourists and the occasional language barrier an international traveller might run into now and then. A home to some 5.6M inhabitants, Ankara is not about relaxation and recreation, it is a political epicentre and a vibrant business hub. If one wants to start a business in Turkey, Ankara is the place to be.

The groundbreaker

Sonmak Diamond Tools was established by Omer Isik Demiray in 1975 to supply diamond consumables to mining and quarry operators - a massive industry in Turkey. An alumnus of Metu (Middle East Technical University) with degrees in both mechanical and mining engineering, Omer Isik Demiray was the first man in the country to acquire a diamond press to produce tools for cutting granite and marble, which he designed himself.

The name ‘Sonmak’ is an anagram of the Turkish words ‘sondaj’ (drilling) and ‘makina’ (machine). Thanks to

Demiray’s vision and perseverance, Sonmak became a pioneer in diamond technologies in Turkey and has remained the number one player on the domestic market ever since.

Going international and prioritising construction

By the late 1980s Sonmak had grown mature and skilful enough to take its game to the international level. Ger-



Manufacturing process at Sonmak.

man and Dutch users were the first to sample the fruit of Sonmak's manufacturing expertise, and the experience left them duly impressed. The Middle East and Balkan countries followed suit shortly afterwards. The early 1990s saw Sonmak expanding into Eastern Europe and the former USSR republics. In 1992, in a major shift in strategy, the Turkish company began to focus on producing diamond consumables for construction applications rather than for stone processing. This has seen diamond tools for sawing, drilling and grinding of construction materials being developed which now accounts for some 70% of Sonmak's total output.

Generational shift

With the advent of the new millennium, Sonmak's management underwent a generational shift, with Omer Isik Demiray's nephews Barış Örtülü and Avşar Örtülü joining the company over the space of a few years. Both came to work for Sonmak straight after college. A holder of a diploma and a specialist in business administration, Barış has been overseeing Sonmak's sales for 22 years now. His younger brother Avşar, who has a degree in mining engineering, joined the company in 2007 in the capacity of production manager. Today he also acts as managing director for Sonmak. Together with Gül Demiray, Omer Isik Demiray's daughter, the brothers own 100% of Sonmak's shares.

Discovering America

In 2018, Sonmak exhibited at the World of Concrete trade show in Las Vegas for the first time experiencing great success. According to Avşar Örtülü, the show was an absolute game changer for the Turkish manufacturer that until then had only sold occasionally to US customers. From that year on, North America would remain one of Sonmak's most important overseas markets that just keeps on growing. On the back of the successful American campaign, Sonmak expanded its manufacturing capabilities with the addition of a Diaset volumetric cold press KPV 300 from Dr. Fritsch, a second laser welding machine and a selection of other equipment.

Diamond tools of any kind and now the machinery as well

Sonmak owns and operates a 6,000m² facility in Ankara where it manufactures a comprehensive range of diamond consumables for the construction and stone industries. Sonmak's flagship products include diamond blades, core drills, sintered and electroplated wires and grinding shoes. The Turkish manufacturer has a stringent quality control procedure in place, with every product getting tested twice: first in the laboratory and then in the field. There is a dedicated labelling station at the facility for Sonmak's own tools and for private label items, which constitute about 11% of total production.

In the past few years, Sonmak has been growing exponentially, with sales doubling on an annual basis. Today the company employs 110 people and supplies its products to every continent on the globe via a 30 strong network of dealers and agents. The USA, England, France, Germany and Australia top the list of Sonmak's biggest markets for construction tools, while Greece, Middle East and North Africa lead the way as the



(Left) Ferhat Sahin who handles Sonmak's international operations and (right) Avşar Örtülü, Sonmak's managing director and production manager.



"On the back of the successful American campaign, Sonmak expanded its manufacturing capabilities with the addition of a Diaset volumetric cold press KPV 300 from Dr. Fritsch".



Sonmak owns and operates a 6,000m² manufacturing facility in Ankara.



A diamond blade personalized for PDi magazine.



Manufacturing process at Sonmak.

largest consumers of consumables for stone processing. International operations are handled by sales manager Ferhat Sahin who joined Sonmak in late 2012. Sonmak is now looking forward to bauma 2022, which will be a first for the Turkish manufacturer. Apart from new tools featuring Sonmak's proprietary aligned diamond

technology, a range of surface preparation equipment will be on display in Munich. This €1M project, which Sonmak developed jointly with a machine manufacturer, has been underway for some time. The first trials of the machinery will take place in March.

www.sonmak.com

Optimised recycling in waste incineration plants

BHS-Sonthofen has supplied two different technologies to assist an innovative recycling process in waste incineration. Since 2021, a rubber belt filter, specifically suited to the requirements of the new process, along with a belt filter, has ensured fly ash at the Danish power plant Vestforbraending is treated efficiently. They have brought two specific benefits: recyclable materials can now be recovered from the ash and the ash previously declared as hazardous waste can be disposed of as normal waste. Extensive preliminary filtration tests on a laboratory scale were performed before the order was placed to obtain an optimum process result immediately upon commissioning.

The EU requires that at least 50% of household waste has to be recycled and the rest has to be used as a

source of energy in waste incineration plants. However, the operators of these plants face a number of challenges along the way. Waste incineration produces ash contaminated with salts and heavy metals, which are considered hazardous waste and must be disposed of in special landfills. This involves long transport routes and high costs. Danish company Vestforbraending developed a new type of fly ash treatment process under the name 'Halosep' in cooperation with the Swedish recycling company Srena Recycling. The project, officially called 'Life Halosep', is supported by the EU through the 'Life' financial instrument – a funding programme for environmental protection measures.

Heavy metals and salts can now be recovered from the fly ash. This makes it possible to store the ash residue in

normal landfills for non-hazardous waste, unlike the input material. The new process therefore offers benefits in two respects: it makes it possible to market recovered recyclables and reduces disposal costs. The pilot plant in Copenhagen, equipped with technology from BHS-Sonthofen Process Technology, started operation in 2021. Samuel Moore, project manager at Vestforbraending, commented: "BHS-Sonthofen sets itself apart with its special expertise in the field of filtration. Having such a strong process engineering partner is essential for pilot plants in particular."

Process efficiency

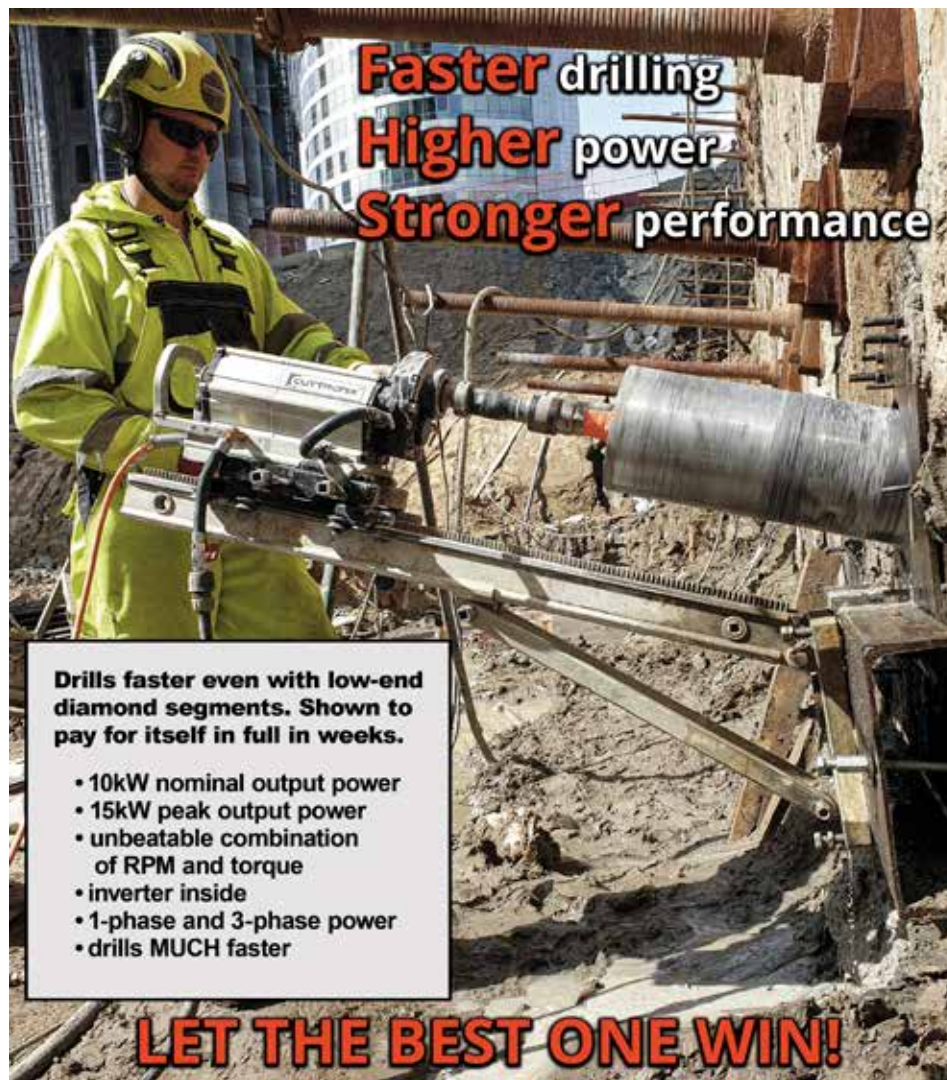
Treating fly ash produced during waste incineration is a multi-step process. First, it is mixed with the flue gas cleaning washing water, which leads to metals and salts being released from the ash. A BHS belt filter is used to filter the resulting suspension. After a further wash, the solid that remains is purified ash. The process water used in the first step is treated further to recover both salts and metals. After the salt water has been separated, a BHS rubber belt filter with continuous vacuum filtration filters the suspension with the metals being left behind as solids. The process water can now be returned to the process.

"Salts and heavy metals are highly corrosive. That is why a robust and corrosion resistant design was crucial for this project," says Simone Ahlert, technical sales manager at BHS-Sonthofen Process Technology, summarising the customer's main requirements. "BHS-Sonthofen has extensive experience with problematic input materials. All of the machines can also be tested in advance with the respective material."

Preliminary tests

Each process is unique. For that reason, all of the process parameters and design principles used to select the appropriate filter size must be determined on a case by case basis. BHS therefore carried out on site tests on a laboratory scale directly at the customer's site, using the exact material that will be used in the final process. "A constant throughput is crucial in a continuous process; thanks to the laboratory tests, we were able to determine the best way to adapt the rubber belt filter used as well as the belt filter to the process in advance. This means it can be integrated into the overall plant much more efficiently, even with completely new processes such as Halosep, or related processes such as Fluwa," says Ahlert, explaining the proven procedure.

15,000t of fly ash will be treated at the plant annually. Moore is confident that he will be able to further optimise the process with the help of strong partners such as BHS-Sonthofen. "Up until now, fly ash could only be deposited as hazardous waste in a mine or mountain, which involves long transportation routes. The aim of the Halosep process is to reduce the load on the ash so that it can be deposited locally. If we're successful, we'll look at the possibility of using the ash as a building material."



**Faster drilling
Higher power
Stronger performance**

Drills faster even with low-end diamond segments. Shown to pay for itself in full in weeks.

- 10kW nominal output power
- 15kW peak output power
- unbeatable combination of RPM and torque
- inverter inside
- 1-phase and 3-phase power
- drills MUCH faster

LET THE BEST ONE WIN!

CUTTRONIX®
BY PROFESSIONALS. FOR PROFESSIONALS.

CUTTRONIX®
is the trademark of
KASKOD
www.cuttronix.com





MATERIAL HANDLER INSTEAD OF EXCAVATOR FOR METAL RECYCLING

When Iwamoto Metal Co Ltd.'s excavator, which had been converted for material handling, needed to be replaced, it was clear that the new machine had to be more powerful and at the same time incur lower operating costs. Its new Sennebogen material handler is custom built and perfectly adapted to the material handling conditions on the company's site.

Iwamoto Metal Co Ltd. is a major player in Japan in terms of metal recycling. More than 90,000t of scrap metal are processed each month at 11 scrap yards spread throughout the country, with an increasing influx of scrap coming particularly from the automotive industry. The larger amounts of scrap means that the machines are subjected to higher loads and have to process more material in the same time, and the space on site has to be used more effectively. The company's latest addition loads the metal scrap delivered into a 7m high shredder. This made the decision to replace the previously used converted earthmoving excavator with a machine that is specially designed for material handling in recycling.

Modern material handler

"Earthmoving excavators often reach their limits in recycling and scrap handling in terms of load capacity, engine power and cooling," explains Takeshi Iwanami, product specialist at Sennebogen's Japanese sales and service partner Sun Earth Co. Ltd.. Conditions in earthmoving differ from those in material handling as earthmoving excavators are designed to exert their force downwards, directly into the soil. Material handlers are optimised for high reach with maximum payloads. In these areas, earthmoving excavators lack the necessary power. The material handled also has a crucial difference as soil etc. has a much lower density than metal. Additionally, since less load capacity is required, the engines

of earthmoving excavators are generally smaller in size. This means that there is a lack of power and appropriate engine cooling to be able to work reliably and sustainably when material handling.

Increased performance through customised configuration

In addition to the advantages outlined, Iwamoto's material handler has been adapted to the need for greater efficiency. In order to contribute to environmental protection and reduce operating costs, the material handler was selected with 132kW electric drive and its 4.5m pylon elevation provides the best possible view of the scrap piles up to the 7m high shredder. Thanks to a liftable cab, the operator, Hisao Sugino, can see over even the most remote corners with a maximum eye level of 10m. This increases efficiency and, above all, reduces the risk of accidents.

A much better view, noticeably more power and precise control means that Hisao Sugino is more than satisfied with the new machine. For years, his employer has relied on the German made Sennebogen green machines at all its sites in cooperation with Sennebogen's sales and service partner Sun Earth Co. Ltd.. "We are glad that we decided for the electric material handler. The machine performs much better than its predecessor and the operating costs are much lower," states Hiroshi Iwamoto, managing director of Iwamoto Metal Co Ltd.

airtec VISTAFLOOR®

THE SMART TECHNOLOGY FOR SURFACE PREPARATION

MILLING / PLANING



- RM-400-EL
400mm working width
- Built for high production on concrete and asphalt
- Hydrostatic-drive



GRINDING/REMOVING



- RM-320-EL
320mm working width
- Successful grinding/planing of concrete and asphalt
- Large variety of cutters
- Self-propelled



POLISHING



- BS-825-EL
825mm working width
- Concrete surfaces
- Terrazzo, marble
- Unique patented planetary system



Option:
with Remote
Control



SAFETY GROOVING/ SURFACE CORRECTION



- SM-320-EL
320mm working width
- Where cars, people, airplanes and animals go
- The diamond-drum concrete shaver



AIRTEC Ltd. - CH-4455 Zunzgen / Switzerland



RECOVERY MODE

Optimism and Omicron underscore slimmed down World of Concrete.



The MB Crusher team at WOC.

Rain in Las Vegas isn't totally unusual. Though one of the driest cities in the U.S., it still receives just over 100mm of precipitation each year. But the fact that some of those precious drops fell on the morning of World of Concrete's opening day might have been a harbinger of a show that would be different from normal, yet appropriate to the different times we're living in.

Omicron fear impacted

Following a scaled back, but nevertheless upbeat 'mini-WOC' just six months earlier, the weeks leading up to the 2022's event's restored wintertime schedule were fraught with uncertainty due to the rapid worldwide spread of the Covid-19 Omicron variant. Though generally less deadly than its pandemic predecessors, Omicron nevertheless took a toll on WOC's manufac-

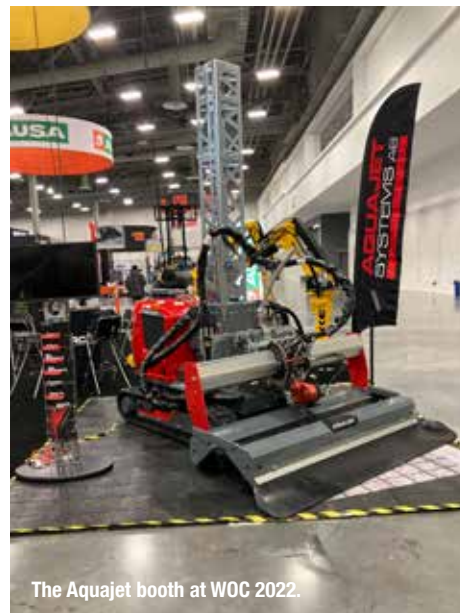
turer participation, particularly those from overseas. "We were set to have seven people come over from Sweden," said Conjer's national account manager Rick Larrson. "One by one, they tested positive, shrinking our nine person booth team to two."

Omicron seemed poised to shrink attendance as well, though busy work schedules in the rather robust U.S. construction market may have played as big a role for some contractors' decisions to stay home as travel concerns or the prospect of another down year. So when the last visitors filed out of the Las Vegas Convention Center on the final afternoon, it turned out that WOC 2022 was...well, not the best, but not so disappointing either. Organisers report that the show attracted nearly 37,000 attendees and more than 1,100 equipment, tool, and materials vendors - a far cry from 'before times' numbers, to be sure, but hardly a ghost town.

What's more, there were plenty of new products to see and try out. As usual, one of the biggest outdoor exhibits belonged to Hilti which showed off its new 'Nuron' 22V battery platform for handheld tools. Visitors didn't have to wait to try out a Nuron model for themselves, as the company's rollout spans 70 tools - circular saws, metal cutting tools, breakers, drivers, impact wrenches, and others - with more on the way. Along with simplifying a contractor's jobsite battery needs, Hilti claims Nuron tools provides performance usually limited to the realm of high voltage of gas powered models. "It opens the door to a lot of new tool innovations and enhancements to existing models, such



Picture from one of the WOC outdoor lots.



The Aquajet booth at WOC 2022.



as adding our 'Automatic Torque Control' technology to smaller drills," said Hilti product manager Artie Reams. "Owners can also collect data from the batteries as they charge, and use that information to help their people be more productive."

The prospect of a smaller WOC didn't keep hydrodemolition specialist Aquajet from introducing its new 'Aqua Cutter 750', which features a new 'Infinity' oscillation that moves the water jet in a 'figure-8', or infinity pattern. Aquajet business development manager Keith Armishaw explained that the varying speeds of conventional sine-wave lance patterns frequently produce inconsistent results and 'shadows' beneath rebar. Along

with tracking up to two times faster, the infinity pattern movement removes more material in a single pass, eliminating the need to follow up with hand lancing. "The machine is remarkably simple, yet so efficient,"

Armishaw says of the Aqua Cutter 750. Aquajet has also incorporated controls that automatically calculate optimal settings for speed, start/stop, and other functions to minimise the risk of operator error - another source of



Alex Berg (L) from Cratos, US Twinca distributor

Hydraulic demolition and sorting grabs

Once a Dehaco hydraulic grab has its claws in something, it is not very likely to drop it again. The weight of the grabs is relatively low and the volume is large, and yet they are very powerful, reliable and user friendly. They are the result of the experience that Dehaco has gained in more than 30 years.

DEHACO. THE BEST EQUIPMENT FOR A NEW BEGINNING...



Tera Dust Control Unit



Watch video



Hydraulic magnets

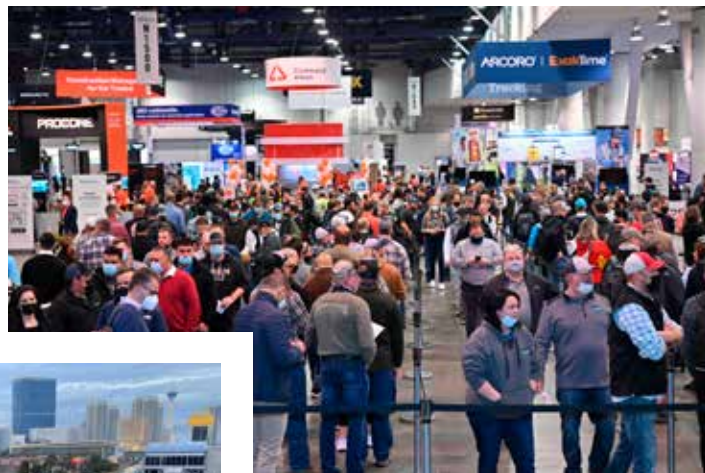
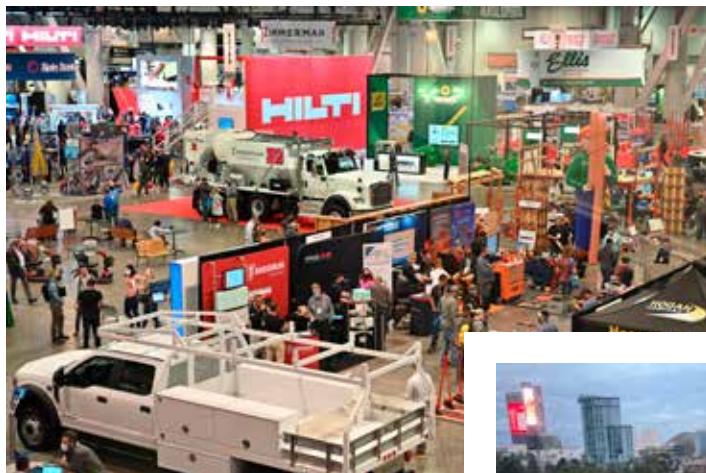


Floor strippers

Kruisbaak 25
2165 AJ Lisserbroek
The Netherlands

+31 (0)88 - 20 20 600
info@dehaco.nl
www.dehaco.nl





Diamond Vantage-Gorilla Tool cutter.

inconsistent results. "If you have five different operators, you can get five different results," Armishaw adds. "This helps even out quality, productivity, and consistency."

Another show floor debut was Kubota's new U10-5 1t mini excavator. Product manager Patrick Baker explained that the new model is an updated version of its rental market focused K008-5, with a 7.5kW engine that produces nearly 1,088kg of breakout force and able to travel up to 4kph. "It gets across the site quick," Baker says. As for its minimal zero tail swing classification, Baker explained that a mere 15mm overhang prevents the machine from being a zero tail swing unit. "It's still able to work in even the tightest spaces," he adds. Track width can be adjusted from 762mm to 990mm.

Notes from all over

WOC always showcases concrete grinding and polishing equipment. This year, Superabrasive featured its new propane model L30GE that includes a 17.9kW Kohler propane engine that the company says provides more uptime, better fuel efficiency and higher performance. Two new propane powered power trowel models for larger scale jobs were also on display: the 1,549mm LP30E that can fit through standard doors, and the 2,032mm LP36GE 'Elite' model, which comes with 203mm x 33mm head and the 17.9kW Kohler engine.

Sase Company showed its new 635mm 6KP propane grinder, which is now in full production according to technical director Cliff Rawlings. At 317.5kg, the machine provides up to 242.6kg of down pressure. "The drum is hub driven, so the bearing system will last from 1,800h to 2,500h," Rawlings added. "The carburettor and regulator are mounted together, making it almost fuel injected." What's more, the machine's emissions are under 20 ppm - well below the US EPA minimum of 50.

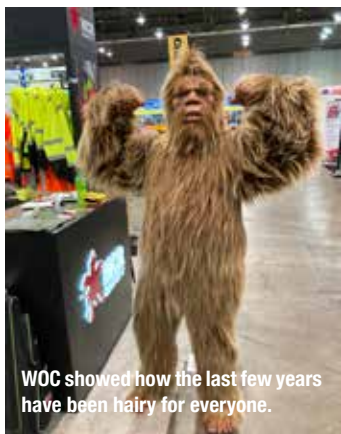


The new grinder SASE 6KP.

There was also a lot to see at Diamond Vantage's booth, with the main attraction being the company's 'Zenesis V' series of blades. A tweak to the blades' diamond pattern promises both a longer life and faster cutting, as well as the opportunity to develop 101mm to 609mm blades for grinders. Also on display was a new small cutter developed in collaboration with Gorilla Concrete Tools of Ohio. "We offered some feedback from our customers that they incorporated to add durability and make maintenance easier," said sales specialist Jason Mohr of the machine, which has a 51mm cut depth. "For example, the bearings are simple to change, and no special types are needed. You just go to the hardware store and pick up what you need."

Other WOC highlights included Makita's new XGT 80V cutter with 355.6mm blade, part of a new line of 40V/80V cordless equipment introduced last year. US Saws displayed its hydraulic walk behind saw with 508mm blade for compact applications, while Blastpro displayed a prototype of its BPS-11 portable scarifier that can provide 3.175mm cut depth per pass. That model is undergoing design revisions to accommodate a new motor, but should be available later this year.

And there was some business news, with the Reno, Nevada based MB Crusher America announcing the opening of a new branch in Kernersville, N.C.. CEO



Regan Whitfield said that along with providing sales, equipment support, and a product demonstration area, the new location is also closer to East Coast ports where MB Crusher products arrive from Italy. Whitfield, who has led MB Crusher America since January of last year, noted that the US market is still evolving when it comes to attention to concrete recycling and process. “We see that changing, and by introducing equipment that makes that work easier and more efficient, we hope to change the mentality of recycling as well,” Whitfield said.

In some ways, the protracted pandemic heightened awareness of the construction industry’s already pervasive problems with labour availability, enhancing the importance of equipment that helps maximise productivity and ease of use. Milwaukee Tools’ Nick Hanns noted that telematics technology, like his company’s ‘One-Key’ system can help with more than inventory management.

“A user can dial in certain settings, activate kickback protection, and increase repeatability of performance, regardless of who’s using the tool,” he says. “That helps workers of all skill levels do things more efficiently and be more productive.”

B&W Equipment general manager Darrell Miller cautioned that such features can go only so far for some types of equipment however. Using a ‘fleet approach’ risks having workers treat the tools with less care than they should. “Sometimes it’s better to have a dedicated user,” he explained.

The verdict

While WOC 2022 may have lacked the size and some of the glitz of its pre-pandemic predecessors, discouraging words about the show were rather scarce. Many exhibitors noted that as in years when an impending Conexpo curbs WOC numbers, this year’s show attracted contractors

committed to investing in their businesses. “Even though we’re in a different location in Silver Lot, this was busiest first day of the show ever,” Whitfield said. Alex Berg, CEO of Cratos Equipment, the new US distributor for Danish micro equipment manufacturer Twinca added, “We had low expectations but the show has been pretty good, and the equipment was well received.”

The availability of indoor space also worked out well for smaller exhibitors. “We had more traffic today than in all the years we were outside,” observed Tim Kavka-Coogan, general manager for Clear Blast, a West Chester, Pa.-based maker of wet abrasive blasting tools. And for those exhibitors who braved Omicron, potential travel shutdowns, and any number of other hurdles to get to Las Vegas, the effort was well worth it. “We didn’t know what to expect,” said Thomas Baier of Germany’s Otto Bailer Tools, “But we were very pleased. It was a good, quality experience.”



SYNTECTM
DIAMOND TOOLS

Leaders in Diamond Tool Technology
BLADES | CORE BITS | SURFACE PREP



HIGH-PERFORMANCE DIAMOND TOOLS



WEBSITE



WHETHER CUTTING, DRILLING OR GRINDING - WE'VE GOT YOU COVERED!

Worldwide Distribution Network | pdisales@syntecdiamond.com | +61 8 8102 0115

TOPTEC

SPEZIALMASCHINEN GMBH

TopTEC Spezialmaschinen GmbH

REMOTE CONTROLLED DEMOLITION ROBOTS

Breithornstraße 10 · D-81825 München

E-mail: info@toptec-germany.de

Tel.: +49 (0) 89 - 4272 05 50



TOPTEC

www.toptec-germany.de

A RE-TIPPING POINT

As measures against spreading the coronavirus are reduced or removed, there is a hope that a tipping point is on the horizon and the two year Covid-19 nightmare will soon be over. Once this becomes a reality, players in the concrete sawing and drilling industry will have to 're-tip' their operations and get themselves back on track. In anticipation of that moment, some have started to do just that. PDi's Andrei Bushmarin looks at the latest innovations in core drilling.



ing costs and downtime are lower.” The DM 540i is part of Husqvarna’s i-series ‘battery eco system’. This means that the battery can be used on multiple Husqvarna products. Håkan Pinzani concludes: “Ergonomics, user friendliness and a versatile battery system are not the only highlights of the DM 540i. Built in connectivity also means that location, runtime and service intervals can be easily monitored and wireless updates received.” www.husqvarnacp.com

Lissmac features ‘Drill Jet’ line-up

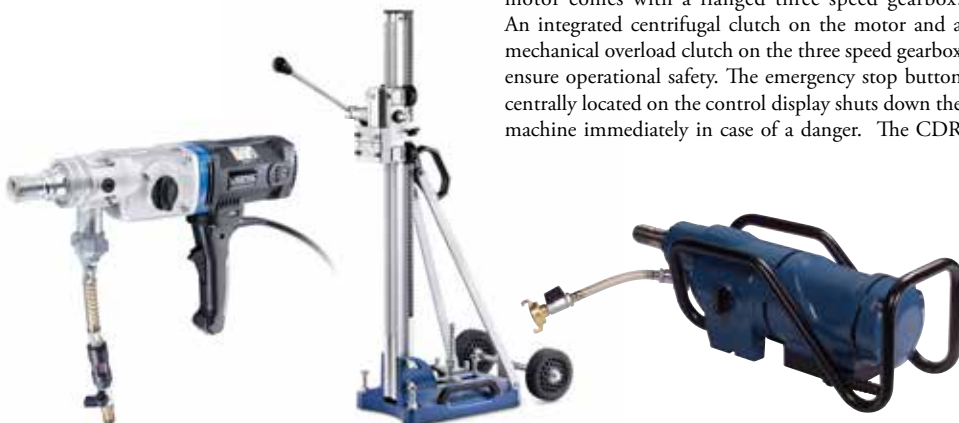
The Drill Jet series from German based manufacturer Lissmac currently includes four drill motors, five stand options, a special system for pipe drilling and a comprehensive range of accessories. The two smaller drill motors - the CDM 20 P and CDM 20 S – boast a rated power of 2,000W. Fitted with an ergonomic pistol (P) or spade (S) grip, these compact models are designed for the hand held drilling of holes of up to 200mm in diameter

in masonry and 150mm in concrete. The rig mounted CDM 33 W with a power rate of 3,300W is designed for up to 350mm wet coring jobs. At the top of the Drill Jet range is the powerful 6,300W CDM 63 W model for up to 500mm tasks. The enclosed housing of the water cooled motor permits overhead drilling without additional sealing equipment. All models feature Lissmac’s ‘Multi-Safe-Tronic’ safety system, which protects the drive from electronic and mechanical overload and safeguards the motor from overheating. The LED signals on both sides provide additional safety by indicating the current drilling load. Visual service indicators signal the maintenance requirements for such vital components as shaft sealing rings and carbon brushes. The modular construction of the Drill Jet rigs ensures operational flexibility on site.

Lissmac’s in house system for pipe drilling consists of the CDM 23 WP motor and the specially designed CDR 350 stand. With a rated power of 2,000W, the motor comes with a flanged three speed gearbox. An integrated centrifugal clutch on the motor and a mechanical overload clutch on the three speed gearbox ensure operational safety. The emergency stop button centrally located on the control display shuts down the machine immediately in case of a danger. The CDR

Husqvarna extends its ‘i-series’

Sweden based heavyweight Husqvarna has extended its i-series with the addition of the DM 540i drill motor. Designed for 15mm-75mm drilling in hand held mode and up to 100mm drilling on a drill stand, it allows for easier handling and higher productivity while reducing physical strain on the user. The specially developed thin walled drill bits ensure better utilisation of the machine’s power and are available for drilling holes of 25mm-100mm in diameter at a maximum depth of 350mm. Håkan Pinzani, global product manager at Husqvarna, speaks of the new model: “The DM 540i can be used both outdoors and indoors for wet and dry drilling. The machine’s ergonomic design and light weight make it a good choice for work in confined spaces or in tight corners or passages, and, with fewer parts to service, operat-



TRANSFORMING YOUR WASTE.



ALLU CRUSHER & ALLU TRANSFORMER FOR DEMOLITION WASTE .

Screen and separate fine materials from the demolition waste with ALLU Transformer screening bucket, and crush hard materials with ALLU Crusher.

Transform all your demolition waste; bricks, asphalt, wood etc. into recycable form. Less material to be transported to the landfill, more efficient utilization of waste materials!

ALLU TRANSFORMER – faster processes with 'one step operation' in screening, separating and loading.

ALLU CRUSHER – reliable crusher with no jamming, and quick adjustment to the required output specification.





350 stand can be easily mounted on to exposed sewer pipes by using a tensioning set or ratchet. If a sewer pipe is not completely exposed, the stand can be fixed to the ground with spikes. The hand crank cross is positioned to enable effortless drilling in both vertical and horizontal directions. The galvanised steel posts and Teflon bushings of the support guide ensure precision even at high loads. Another useful feature for everyday work on site is a crane hook, which facilitates quick lifting and lowering of the entire drilling system.

www.lissmac.com

Tyrolit expands dry range

Austria based Tyrolit has expanded its range of drill motors for dry applications with the addition of the DME17 model. Designed for up to 200mm jobs, the machine has a power rate of 2.0kW and the switchable soft impact function ensures excellent performance when drilling in reinforced concrete and other hard materials. The DME17 can be used in either hand held



or drill based mode. The compact design, low weight and an integrated dust extraction system allow for comfortable operation. The new model is available in three speed configurations (standard, slow and quick) and suitable for a wide range of coring applications.

www.tyrolit.com

Baier Tools shines at WOC 2022

Based in Stuttgart, Germany, Baier Tools has been manufacturing high quality power tools for over eight decades. In the recent years, its focus has been on dry drilling and cutting systems, which Baier believes will be dominant in the future. The highlight of the German manufacturer's booth at World of Concrete trade show this year was a hand held cordless dry coring motor with a cordless backpack vacuum cleaner. Baier also presented the BDB825, an all-rounder for dry drilling applications with the OSHA approved vacuum cleaner BSS606, ensuring 99.8% dust free operation. According to the manufacturer, no amount of rebar poses any problem with these dry coring systems.

www.baier-tools.com



Hilti creates a 'drilling eco system'

Lichtenstein based trendsetter Hilti has a comprehensive product portfolio to offer to both professional concrete drillers and specialists from other trades. The range's true standouts are the compact, multifunctional DD 150-U and the powerful heavy duty DD 250-CA drill motors, both available as of May 2021. The machines feature Hilti's popular 'Cut-Assist' functions: base material search, electric start aid, automatic water on/off and break through detection. Both models are equipped with digital displays for the user to control and operate the autofeed. The system recognises the start and completion of every hole by displaying actual drilling depth and collecting total depth in the user statistics. The DD 150-U and DD 250-CA motor are connected to autofeed units DD AF-CA L and DD AF-CA H and the water management system DD-WMS 100 via Bluetooth into a single network. The user can monitor drilling progress while carrying out other tasks. A special app on a mobile device helps customers register the operational history of the tools.

www.hilti.com

Hand held coring solutions from Hycon

Hycon, a Denmark based specialist in hand held hydraulic cutting, drilling and demolition tools, has two core drills in its range. The HCD 25-100 model is a 1,500rpm drill for up to 100mm coring jobs. The machine is suitable for a variety of applications ranging from vibration free drilling of anchoring holes in reinforced concrete to installation holes for water pipes, cables and fibre optic ducts. The HCD 50-200 is a 500rpm high torque drill for up to 350mm applications. This model is recommended for drilling holes for road cables, ventilation holes and sewer lines.

www.hycon.dk





FIND OUT MORE ON
www.arden-equipment.com

ARDEN
EQUIPMENT



AIO ↔ **x ARDENJET**



COMPREHENSIVE EQUIPMENT FOR ADVANCED

CORE DRILLING

Hilti offers one of the most comprehensive product portfolios for core drilling. A well-balanced program attracts not only professional diamond contractors making their living from sawing and coring applications but also professionals in other trades meeting the challenge of core drilling regularly or every once in a while.

Next to drill motors, stands and a broad core bit program Hilti also offers a wide range of accessories including the DD VP-U vacuum pump, the DD WMS 100 water management system and the DD-AF CA autofeed unit for the high-frequency motors DD 350-CA and DD 500-CA.

In the center of the product program stand the compact, multifunctional DD 150-U and the powerful heavy-duty DD 250-CA systems – both of them attracting attention with an overwhelmingly impressive package of new functionalities.

New autofeed units DD AF-CA L for DD 150-U and DD AF-CA H for DD 250-CA

Hilti is determined to spread its Cut-Assist technology. The new units not only transfer the popular DD-AF CA functions – base material search, electric starting aid, automatic water on/off and break through detection – to the new units but go beyond and bring impressive, exceptional features to the market.

Depth detection

Both drill motors are equipped with digital displays as user interface. The autofeed units are controlled and

operated over these. The systems recognize the start and completion of every hole displaying actual drilling depth during drilling and collecting total depth in their user statistics. Detecting, tracking and registering drilling depth isn't a vision anymore – it's here.

Bluetooth connected, self-optimizing network of tools

Hilti not only offers drilling motors but also all electric devices needed while coring. There's an immense potential of productivity in assisting the user by letting

these tools to exchange information and optimize each others behavior.

The water management system DD-WMS 100, diamond drilling systems DD 150-U and DD 250-CA and autofeed units DD AF-CA L and DD AF-CA H are connected via Bluetooth into self-optimizing local equipment networks – with the entire system controlled over the digital displays of the drilling tools. You can monitor progress while carrying out other tasks. You will be instantly notified about any change in the status of your tools while the system is automatically taking measures to avoid downtime for instance through loss of cooling water or stuck core bits. Depleting water levels, missing filter bags and damaged segments will not lead to any headache anymore.

Creating a new level of tool user interaction

Hilti used LEDs on its tools for a long time to help users while working. The DD 150-U and DD 250-CA offer now digital displays so that users can do even better and more.

A flow of functions and screens escort the user through the application steps from set-up to drilling and the tracking of the work that has been done. A gear selection aid, digital spirit level, electric starting aid, real time contact force controls and easy to understand service messages make the work easier and increase productivity.

In combination with a mobile device the ON!Track app helps you to better understand and register the usage history of the tools.



www.hilti.com



POWERFUL SMART CONNECTED

The new DD 250-CA
diamond drilling system



Extremely wide drilling range: 12–500 mm

Cut-Assist functionality with the new DD AF-CA H autofeed unit

Detect, track and register drilling depth

Find out more: www.hilti.group





Komatsu selected for development of innovative technologies for outer space construction

Komatsu has applied for the request for proposal concerning the 'Project for Promoting the Development of Innovative Technologies for Outer Space Autonomous Construction' (lead managed by Japan's Ministry of Land, Infrastructure, Transport and Tourism (MLIT) in collaboration with Japan's Ministry of Education, Culture, Sports, Science and Technology. The project was decided on by MLIT in July this year as part of the strategic programme, 'Accelerating Research, Development and Utilisation of Space Technology' ('Stardust'). Komatsu's proposal for the development of digital twin technology for lunar construction equipment has been selected as an eligible target of technology related to autonomous construction.

Under the leadership of the Council of Promoting the Development of Innovative Technologies for Autonomous Construction, an inter ministry collaboration body, all selected companies and organisations will diligently conduct research and development of their individual technologies. In this way, in the near future Komatsu will contribute to Japan's achievement of advanced construction and research and development of outer space construction activities, such as on the moon.

In the ongoing three year, mid-term management plan, to be completed in the fiscal year ending 31 March, 2022, Komatsu is working to achieve safe, highly productive, smart, and clean workplaces of the future by advancing products (automation and autonomy of machines) and processes (optimisation of construction operations). Concerning the selected 'Development of Digital Twin Technology for Lunar Construction Equipment', Komatsu will utilise accumulated technologies in both products and processes.

Due to its complicated to approach actual objects on the moon's surface, Komatsu believes that digital twin technology is essential, precisely recreating site conditions and machines. To develop this technology, Komatsu will conduct a feasibility study to verify the possibility of developing high precision digital twin technology, the basic technology of lunar construction equipment. Specifically, Komatsu will create and operate a hydraulic excavator in cyberspace and compare its movements with actual equipment on Earth to verify the simulator's precision. Komatsu will also set the surface conditions of the moon as cyberspace and check the movements of the excavator in the simulator in order to identify the issues facing lunar equipment.

The achievement of safe, highly productive, smart and clean workplaces of the future by advancing products (automation and autonomy of machines) and processes (optimisation of construction operations) during the next 100 years, will see Komatsu continue to create value through manufacturing and technology innovation to empower a sustainable future where businesses, people, and planet thrive together.

CAT UPDATES 'NEXT GEN' WHEEL LOADERS

Cat has updated its Next Gen 966, 966 XE, 972 and 972 ZEE wheel loaders with the design extending fluid and filter change intervals to lower maintenance costs by up to 20% when compared to previous models.

Cat states that its continuous variable transmission (CVT) on the Next Gen Cat 966 XE and 972 XE loaders improve fuel efficiencies up to 35% compared to the previous 'powershift' models. Cat also states that prolonged service intervals plus efficiencies gained through the CVT powertrain result in reduced maintenance costs. All updated models feature Cat 'Payload' with 'Assist', whilst the new Cat 'Autodig' with 'Auto Set Tires' delivers consistently high bucket fill factors for the updated medium wheel loaders and new application profiles sets multiple machine parameters with the press of one button.

Cat 'Advanced Payload' with 'Assist' offers 'Tip Off Assist' to adjust the final bucket load to match hauling unit target, enhanced lists management, site integration and more. Cat 'Productivity' subscription provides information for the site off board to a smartphone, tablet or computer. Deep system integration of the CVT powertrain, engine, hydraulic and cooling systems come as part of the Next Gen Cat 966 XE and 972 XE design which Cat says results in increased performance and fuel efficiency. Without the torque converter of mechanical drive systems, these loaders independently control engine rpm and machine speed to provide digging, fine control and operation. Cat also states that the design extends maintenance intervals to 1,000h and eliminates the 500h service intervals.

The 'Cat App' provides alerts for required maintenance and assists requesting service from the local Cat dealer. 'Remote Troubleshoot' connects the machine

to the dealer's service department to diagnose fault codes without on-machine cable connection. 'Remote Flash' ensures the wheel loaders operate with the most up to date software without impacting the production schedule. The cab includes sound suppression, seals and viscous mounts. A wide door that unlocks remotely from the ground plus inclined steps improves cab ingress/egress, whilst the 'HMMU' steering wheel is available as an option for the 966 and 972 powershift models. The updated models are also equipped with standard monitored seatbelts, a standard rear vision camera, large mirrors with integrated spot mirrors, a Cat 'Detect' radar and a multi view 360° vision system.

Available in capacities ranging from 2.8m to 14.0m for the new 966 and 972 loader series, Cat 'Performance Series' buckets balance shape against the machine's linkage. 'Fusion Quick Coupler' buckets permit rapid work tool changes without leaving the cab. Purpose built options includes an aggregate handler configuration that offers higher payload capability for loose aggregate handling applications. Industrial and waste models feature the guarding and reinforcement required for working on demolition sites, transfer stations, recycling facilities and so forth. The loaders can be ordered in the steel mill configuration that incorporates additional levels of safety.





CONEXPO-CON/AGG 2023 OPENS CALL FOR

education session ideas

What should we be talking about to ensure a strong, prosperous future for the construction industry? That's the question AEM's Conexpo-Con/Agg 2023 team has tasked itself with trying to answer, and now request input from prospective attendees.

The opportunity to hear and talk with peers at the largest construction show in North America is just over a year away and efforts are underway to plan the education programme to ensure show attendees have ready access to best practices, key industry updates and relevant case studies.

Conexpo-Con/Agg 2023 plans to feature more than 150 education sessions, with an emphasis on peer to peer learning. "We are grateful to our attendees whose unique perspectives are shaping the future of the construction industry," said Graham Brent, Conexpo-Con/Agg 2023 education committee chair and chief executive officer at NCCCO Foundation. "Your ideas are needed to continue Conexpo-Con/Agg's comprehensive education programme. This show is for the industry, by the industry and we need your input to create the cutting edge information for today's challenging economy and business model."

What knowledge or concepts can you share?

Conexpo-Con/Agg is looking for ideas that include topics that need to be covered, people from the industry speaking or a session title, description or volunteering to act as a speaker. Topics of interest for 2023 should include a focus that fits within the following areas:

Business Best Practices; Workforce Development; Aggregates; Asphalt; Concrete; Technology Solutions; Equipment Management & Maintenance; Earthmoving & Site Development; Cranes, Rigging & Aerial Lifts or Safety & Health.

The deadline to submit ideas was 31 January, 2022. Session submissions has been evaluated by the Conexpo-Con/Agg 2023 education committee. Notification of ac-



ceptance will take place by mid-April. For any inquiries regarding the programme, please contact AEM's Brooke Konopacki at: bkonopacki@aem.org or 414-298-4745. The next Conexpo-Con/Agg and co-located IFPE takes place at the Las Vegas Convention Center from 14-18 March 2023.

About the Show and the AEM

Conexpo-Con/Agg is the largest construction trade show in North that connects professionals from every major construction sector. Held every three years, Conexpo-Con/Agg helps construction professionals elevate their industry expertise, experience the newest equipment and products through demonstrations and industry leading education, make new professional connections and grow their own marketability within the industry.

AEM is the North America based international trade group representing off road equipment manufacturers and suppliers with more than 1,000 companies and more than 200 product lines in the agriculture and construction related industry sectors worldwide. The equipment manufacturing industry in the United States supports 2.8M jobs and contributes roughly €252B to the economy every year. AEM is a co-owner and operator of Conexpo-Con/Agg.



NEW RELEASES FROM

Aquajet Systems

Aquajet Systems introduced a number of new developments at the recent World of Concrete show in Las Vegas, including a completely new robot.

The new robot, the 'Aqua Cutter 750V', includes Aquajet's patented 'Infinity' oscillation that moves the water jet in a figure of eight (or infinity) pattern, removing more concrete in a single pass while reducing shadowing, eliminating the risk of pipe holes and providing an ideal bonding surface. The 750V also features the next generation 'Evolution 3.0' control system that includes new functions, including the ability to automatically calculate optimal settings for lance motion for greater precision and efficiency. Like all Aqua Cutter Robots, the 750V cleans and descales rebar without causing micro fracturing. It also maintains horizontal, vertical and overhead reach, making it suitable for a wide variety of concrete removal tasks, such as renovation and bridge and road repair.

"Aquajet has always been at the forefront of hydrodemolition innovation," said Roger Simonsson, Aquajet managing director. "Infinity oscillation is the next technological evolution, and it is changing how hydrodemolition contractors think about productivity. In the coming years, we will see it replacing rotating lances and similar tools to become the new industry standard. With the productivity gains realised during customer testing, the Aqua Cutter 750V is a significant advancement for hydrodemolition."

The constant lance motion in an infinity pattern, rather than the standard wave pattern that has natural

fluctuations in speed, enables the 750V to remove more material in a single pass, significantly reducing shadowing and making it unnecessary to follow up with hand lancing. The consistent motion also increases the digging effect and virtually eliminates pipe holes, resulting in a superior bonding surface and increased productivity. Another benefit is the constant, low noise that is less disruptive in urban areas and other noise sensitive environments. Alessandro Campa, managing director of Atümat, Aquajet's distributor in Switzerland,

commented on the 750V: "It's the biggest revolution in the history of hydrodemolition."

The 750V also shares several similarities with Aquajet's innovative 'Ergo System'. The infinity power head has Ergo style spring tensioned rollers and quick connection to the roller beam. It also uses absolute sensors, which means it automatically adjusts at the touch of a button. With a larger roller width and a new triangulated base frame for improved stability, the infinity power head contributes to precision while improving the result.

As part of its design, the 750V also includes an upgraded version of the 'Evolution Control System'. First released in 2004, Aquajet's patented 'Equal Distance System' (EDS), provides the ability to cut shapes and remove concrete at different depths in the same pass. The new version ratchets up its performance even more with an oscillation menu that automatically calculates optimal settings for the operator. This not only maximises production from the machine, but also prevents miscalculations from manual adjustments. It also uses a colour based visual status light to show the state of the machine which allows operators to easily see when the machine is working correctly, when it needs attention and when automatic functions or the engine have stopped.

Another key feature is remote start and stop of the diesel engine through radio remote control, making



it possible for the operator to stop or start the robot from a safe distance thereby eliminating the need for the machine to run all day. In addition, the machine will automatically shut down if there's no activity for a certain amount of time thus saving battery power. The 750V comes with the performance focused Aquajet precision drive. This provides highly accurate hydraulic movements, eliminating the inconsistencies that compromise the result. In automatic mode, the robot's lance is highly controlled and always keeps the water jet in the ideal position, which is key to achieving a perfect hydrodemolition result.

With an all-new tracked system, the 750V is said to have the same smooth driving as a car. This motion increases service life by eliminating bounces that can compromise components and improves the accuracy of nozzle distance to surface, further improving precision. The 750V is compatible with Aquajet's line of accessories, including the rotolance, circular power head and 'Aqua spine'. It is also compatible with Aquajet's 'Ecosilence' high pressure pump that supplies the water to run the machine and provides a cost effective option for transport and storage. The purpose built insulated container includes the pump, large capacity diesel engine and control system, with a convenient storage area for the robot and accessories.

Aquajet 'EcoClear'

Aquajet also showed the EcoClear water treatment system which works with Aquajet's full line of hydrodemolition robots to treat the wastewater generated by the process by neutralizing water pH and greatly reducing its turbidity. This means that it can be safely released back into the environment or recirculated in the equipment. The EcoClear system enables the hydrodemolition contractor to treat wastewater in real time and maintain an environmentally sound jobsite. Powered is provided by Siltbuster Ltd., the manufacturer of water treatment systems, it moves as much as 20m³/h through a series of treatment chambers that neutralises alkaline water to a pH of six to nine and reduces turbidity to just 20-25mg particles/l. The entire process can be monitored and controlled online with the 'Reco' control system.

The machine works by pumping water expelled from an Aqua Cutter into an inlet chamber, where a flocculating agent is automatically added to help clump the particles in the water. The water then flows into a second chamber that introduces carbon dioxide to neutralize the pH. In the next chamber, the floc, or solid particles, settles into a storage hopper and is removed by the integrated pump. The water continues to another chamber for a second pH adjustment. A final monitoring tank confirms the water pH has returned to a neutral seven before it's pumped out. Optical turbidity sensors and pH probes continuously monitor and record the water quality to ensure only clean water is discharged. If the water does not meet set limits, the feed pump automatically shuts down to prevent dirty water from escaping. The water then starts to recirculate until it meets the preset values of pH and turbidity.

'Ecosilence'

Aquajet also highlighted the Ecosilence 3.0 that reduces noise and allows for a more compact jobsite, while enhancing environmental stewardship and lowering overall operating costs. The Ecosilence features integrated auto start/stop technology that improves fuel consumption, which saves as much as 25l/day of fuel for a smaller carbon footprint. The Ecosilence is compact, with the entire self-contained system fitting in a standard shipping container. It also produces less noise while in



operation, making it ideal for use in urban areas with limited space and strict noise restrictions. The unit also has dramatically improved pumping pressure, operating as high as 3,000bar and provides ample power for hydrodemolition applications such as concrete renovation and road and bridge repair.

"The original Ecosilence achieved the low noise levels our customers needed but could not match the power of our standard power pack, which was necessary for certain applications," said Roger Simonsson, Aquajet managing director. "We knew we could do better, so our engineers went back to the drawing board to provide the best of both worlds - power and quiet operation. Along the way, we were able to incorporate the latest automatic technology and take 3ft off the overall length."

The Ecosilence 3.0 features an environmentally friendly, low emission engine and high pressure pump to power Aquajet's range of Aqua Cutter hydrodemolition robots. The skid mounted unit employs auto start/stop technology, which temporarily shuts down the engine when not in operation to reduce idling time by up to 50%. The engine automatically starts up when operation resumes. In this way, the Ecosilence saves money and

significantly reduces emissions. The integrated engine and high pressure pump unit pairs with a liquid to air heat exchanger to provide quiet, efficient operation for all hydrodemolition applications.

Aquajet 'Ergo Line' system

Aquajet also displayed its Ergo system at World of Concrete. This incorporates the controller unit, which powers and controls the hydraulics, the 'Ergo Power Head', which manipulates the high pressure lance, and either the 'spine' or the 'climber', unique systems used to support and manoeuvre the power head, based on project needs. The climber attaches to any standard scaffolding pipes and robotically moves along it to deliver powerful hydrodemolition forces for vertical concrete removal and repair, such as high rise construction. The system exerts an impressive 1,000N of reaction force, which is about half of the force employed by Aquajet's Aqua Cutter 710V. The robot can handle higher volumes of water, as much as four times greater reaction force than a human operator with a hand lance. This means the machine can remove concrete faster and easier.

www.aquajet.se

SEBA

CRUSHERS

PROGETTAZIONE, COSTRUZIONE E VENDITA
DI MACCHINE FISSE E MOBILI
PER LA FRANTUMAZIONE E VAGLIATURA PER IL
RICICLAGGIO DI MATERIALI NON METALLICI

DESIGN, CONSTRUCTION AND SALE
OF STATIONARY AND MOBILE MACHINES
FOR CRUSHING AND SCREENING FOR
THE RECYCLING OF NON-METALLIC MATERIALS

Seba Crushers è stata fondata in Italia da un team di specialisti esperti in ingegneria meccanica.

I macchinari SEBA sono progettati per salvaguardare l'ambiente, grazie alle conoscenze e competenze acquisite e alla continua innovazione tecnologica.

Seba Crushers was founded in Italy by a team of experts specializing in mechanical engineering. SEBA machines are designed to protect the environment, thanks to the knowledge and skills acquired in accordance with technological innovations.



SEBA

CRUSHERS

DESIGN, CONSTRUCTION AND SALE
OF STATIONARY AND MOBILE MACHINES
FOR CRUSHING AND SCREENING FOR
THE RECYCLING OF NON-METALLIC MATERIALS

Seba Crushers srl

Via Modigliani, 10 - 60019 Senigallia (AN) - Italy

Tel. +39 345 7109695 - Tel. +39 071 7136739

Per visionare tutti i nostri prodotti: www.sebacrushers.com



SEBA
CRUSHERS



Crushing and screening river rock with just one machine

High throughput with a small machine, transportable on any low loader, ready for use any time and able to handle a wide range of applications: these are some of the criteria that encourage many customers to choose the original Rubble Master compact crusher. One of these customers is the Chilean company Quilín, which often has to access remote construction sites and process a wide variety of materials. River rock in particular would normally have to be processed using several crushers. However, the 'RM 100GO!' manages this task in a just one pass, saving time and money.

Transporting machines several hundred kilometres between construction sites is quite common for the Chilean company Quilín. Based in Santiago de Chile, the company has started several projects in remote areas throughout Chile as part of its growth plan. Each job site places very different demands on the company and its crusher because of the terrain, varying feed materials and the various final aggregates to be produced. As part of growth plans, Quilín decided to invest in the RM 100GO! mobile crusher.

The first challenge facing the new machine was the journey from Santiago de Chile to Puerto Aisén in Patagonia to crush river rock. Until now, this demanding material required several crushing stages and consequently several machines to produce a cubic aggregate from the abrasive gravel. The RM crusher can do this with its built in mesh screen in just a single pass. The result is cost savings in transport because only one truck is needed to transport the crusher, the post screen and wear parts such as replacement hammers. RM sales partner Raico in Santiago provided training for the Quilín team with the crusher being brought to Puerto Montt on a low loader. Following the 9h ferry trip to Puerto

Chacabuco, the crusher drove off the ferry onto another low loader and headed for Puerto Aisén.

Crushing and screening river rock

Crushing river rock, river gravel and even bank gravel to form material with well-defined edges is one of the great challenges in mobile processing. The first task for the RM 100GO! was to crush 300mm river rock to under 40mm. The final product is used as a substructure for the airfield at the job site. This means that perfectly

cuboid final aggregate was required. The RM 100GO!'s crushing technology has proved up to the task, achieving a high crushing ratio of 10 to 1 and output of a high quality, perfectly cubed product. This degree of crushing can theoretically also be achieved with the combination of a jaw and cone crusher. However, purchasing only one crusher saves money on investment costs, as well as for transport and maintenance. In addition, the RM 100GO! requires much less space on the construction site and is easier and faster to manoeuvre than a line of machines.

Cubic final aggregate

River rock cannot normally be assigned to one particular type of rock and is often extremely hard and abrasive. In addition, other crushing technologies often leave smaller grain sizes uncrushed in the final aggregate. Thanks to its unique three stage impact arm and the many adjustment options of the crushing box, RM offers the optimum settings for every material. As a result, river gravel stays in the crushing box for longer until it reaches the specified size and cubic shape. This may sound complicated, but it is not. A spokesperson for Quilín confirmed that, 'The RM 100GO! is a very simple machine to operate. It is easy to maintain and configure, so we always manage to deliver a final aggregate with well-defined edges that meets requirements.'

The RM 100GO! can also be easily and quickly adjusted for other feed materials. That is why the RM crusher meets all the requirements of the Chilean customer, which has resulted in a satisfied customer. The spokesperson for Quilín concluded: 'The RM 100GO! is a highly versatile and flexible diesel electric crusher that is ideal for our applications in the recycling, construction, aggregate and asphalt industries.'



NEW POWERFUL HANDHELD MACHINES AND TOOLS

FROM OUR MANUFACTURERS

New handheld equipment for concrete cutting and demolition include a new line of high frequency electric concrete saws from AGP, as well as new angle grinders and a dry cutting tool range from Tyrolit.



AGP launches new line of high frequency electric concrete saws

AGP is launching a new complete line of high frequency concrete saws, including two sizes of hand saw, a ring saw and a chainsaw. The tools all share the same high frequency power converter, so an operator equipped with the full set of saws will be ready to handle different types of cutting tasks. The motors are all based on AGP's permanent magnet synchronous motor technology (PMSM). AGP states that it is the only manufacturer in the concrete saw industry employing this technology. The company also says it has higher operational efficiency, higher torque density and better dynamic performance under load than high cycle induction motor designs, achieving 90% efficiency at full load.

The AGP model P8K power converter is water cooled and is designed to support tools up to 8,000W. It can run on both three phase 380-480V and on single phase 200-240 V input, using its 16A adaptor cable. One special characteristic of the P8K is that it is actually designed for 32A on single phase. This means that in situations without access to three phase supply, it can still operate at 5,500W power levels with single phase input if it is directly wired to a 30A or larger breaker, rather than using the single phase adaptor cable.

The C406 hand saw provides 150mm depth of cut. Like all of the tools in this product line, it features a 6,200W water cooled motor. It is said to be the most economical of the line to operate, since it is optimised for using 406mm diamond blades, which are said to be easy to find at a reasonable cost. It features conversion to flush cutting, guide rollers for perpendicular cuts, and an LED load indicator. The C18 hand saw is the big brother to the C406, sharing the same features, but having an enhanced 175mm depth of cut. This is achieved using a lower gear ratio and larger guard for running a 457mm blade.

The R16 ring saw provides 300mm depth of cut and features AGP's patented ring saw drive mechanism. The AGP design has been developed to enable more accurate drive tension adjustment, minimising parasitic drag and allowing the maximum power to the blade. AGP believes that its design allows fast blade changes without disassembling the tool. The CS18 chainsaw achieves 470mm depth of cut and has close to flush cutting capability as well. The chainsaw has the ability to make small rectangular cut-outs with no overcuts and is of use when finishing corners with no overcut.



Tyrolit angle grinders for universal applications

In addition to a comprehensively redeveloped and contemporary dry cutting range, Tyrolit is now also launching two new angle grinder models for construction materials and metals for the first time. The universal angle grinders, AGE125 and AGE230, are compact and ergonomically designed and feature strong motors with high efficiency, soft-start as well as a restart and overload protection. The anti-kickback function switches off the motor if the disc jams. Thanks to the optimised cooling and the elaborate dust seal, the service life of the two angle grinder models in the available diameters of 125mm and 230mm is increased.

Adapted to current market requirements, Tyrolit states that its new dry cutting tool range scores with an increased performance by up to 30%, high user friendliness and a new design. The 'Premium line', which is already available made the start. From the end of 2021, users can also look forward to the new 'Standard' and 'Basic' products. The new dry cutting discs of all quality lines are OSA certified and conform to the EN13236 regulations. Tyrolit states that the advantages of the new dry cutting range are up to 30% more performance due to new steel cores, segment shapes and setting patterns; compact assortment with solutions for every construction material; adaptation to current market requirements; product safety as well as EN13236 conformity, OSA certification and a new appearance.

MEET THE NEW **AQUA CUTTER 750V**



Improvements

- » No pipe holes
- » Higher performance
- » Auto calculation for optimal settings
- » Aquajet precision drive
- » Extreme lance control
- » Patented Infinity oscillation system
- » No calibration needed
- » Remote start and stop
- » Boosted track speed
- » Auto distance recognition
- » Evolution 3.0 control system
- » Aquajet online



Julie White selected for the UK Prime Minister's Business Council

The Prime Minister and the Chancellor of the UK have convened a new cohort of business leaders to work in partnership with the Government, to help to drive a high productivity, high growth economy over the next 12 months and level up local economies around the country. Julie White, managing director of Coventry based D-Drill has been selected by Prime Minister Boris Johnson to be part of a Business Council to help assert the UK as the best place in the world to do business.

The new council will support the UK's recovery from Covid-19 and prioritise delivering the green industrial revolution, creating new jobs and developing a skilled workforce and unlocking global investment.

Building on the successes of last year's Build Back Better Business Council, the Prime Minister's Business Council will retain and implement the three core pillars of the Plan for Growth framework – infrastructure, innovation, and skills – against which Council members will continue to translate goals into measurable action. Prime Minister Boris Johnson said: "We've got one of Europe's most open economies thanks to our vaccine rollout programme, and with Plan B restrictions firmly behind us we can now go further to turbocharge the economy and unleash the benefits of Brexit. Harnessing the extraordinary powers of our new Business Council, together we will knuckle down on creating new high skilled, high wage jobs, driving innovation in science

and tech, and mobilising investment to deliver the green industrial revolution – all while levelling up and securing the UK as the best place to do business."

Meeting at least quarterly, the Prime Minister's Business Council will be comprised of 28 members from a range of industries and sectors, including manufacturing, financial services, energy, and world-renowned science and technology sectors. The line-up also consists of 13 women, which sees an increase in the proportion

of female members from last year's Build Back Better Business Council.

The Business Secretary and Trade Secretary will be standing members, with the addition of the Education Secretary to focus on skills. Other Cabinet Ministers will attend meetings as required.

The first Prime Minister's Business Council is scheduled for the coming weeks, and will be co-chaired by the Prime Minister and the Chancellor. "The Business Council offers a great opportunity for the Prime Minister and his fellow Ministers to hear directly from businesses who are best placed to inform and advise on the benefits and implications of decisions made by Government," said Julie White. "The construction sector has a significant role to play in building back better, levelling up and growing the UK economy and I am confident that businesses of all shapes and sizes in the construction supply chain want to play their part," she added.

"As a specialist sub-contracting business with nationwide depots, I experience the day to day challenges of running a business, offering local employment and investing in future generations through our apprentices. My involvement in the Drilling and Sawing Association and Build UK provides me with a greater understanding of the challenges faced by my peers running large and small businesses and I look forward to contributing my knowledge and experience," White concludes.



Julie White.

EDGE INNOVATE'S

NEXT GENERATION

WASTE SHREDDER

EDGE INNOVATION AT WORK

VS420 SLOW SPEED SHREDDER

ROBUST. DURABLE. VERSATILE.

The EDGE VS420 is a high capacity, high torque twin shaft shredder that is ideal for the processing of a large array of materials including: green waste, MSW, C&D waste, biomass and end of life tyres.

INTELLIGENT SELF-PROTECTING CONTROL SYSTEM

1.

TWIN SHAFT DESIGN PROVIDES EXCEPTIONAL INTAKE

2.

LOW FUEL CONSUMPTION OF 25-30 LTR/HR

3.

www.edgeinnovate.com
info@edgeinnovate.com
[+44\(0\)2887 740525](tel:+44(0)2887740525)

#SHREDDINGEVOLUTION



DISCOVER
THE
PD SERIES



born to be
STRONG



A DIFFERENT WAY

vtneurope.com

Yanmar new 'Premium Red' machines pave the way to a new era

Yanmar Compact Equipment has adopted a red colour scheme for all its machines. The new Premium Red paint colour brings Yanmar's compact equipment in line with Yanmar Group's image. "Our dealers and our customers really like the new colour," stated Jeff Pate, sales director, Yanmar Compact Equipment North America. "Everyone feels that Premium Red attracts attention on the jobsite, and just as the quality and reliability of our products stand out from the competition, in a sea of yellow competitive machines in North America, our Premium Red colour stands out too."

In product transformation, Yanmar CE is currently evaluating several alternative fuel and powertrain technologies and recently unveiled its first electric mini excavator prototype, the new SV17e. Proudly featuring the new Premium Red colour, the SV17e is aimed at customers in the European market in the 1.5t to 2t segment. "Our prototype is significant because it demonstrates our capability to bring the quality and reliability of our highly respected conventional engine technology into the arena of electrification," explained director of product management EMEA, Cedric Durand.

In business transformation, Yanmar Compact Equipment is continuing to invest in manufacturing infrastructure and in expanding its global dealer network to increase the proximity to customers, reduce lead times and improve service. Closely linked to these investments is the focus on creating an amazing customer experience. "Our move to Premium Red across our machines certainly signals a change and we are confident that our customers will start to see other changes too," explained Elsie De Nys, global director of channel and brand development. "We have the ambition to be a leader, not only in machines but in the customer experience too and are working hard to get closer to our customers to identify new and innovative ways in which we can add value to them."

The change to the new Premium Red also heralds a new confidence in the Yanmar CE brand and coincides with the launch of its new tagline, 'Together We Build'. "Our aim, together with our dealer partners, is to build stronger relationships and create even greater customer value. 'Together We Build' really underlines our commitment to transforming Yanmar CE and with the help of our dealers, to focus on creating a new and exciting experience for our customers." Concludes CEO, Giuliano Parodi.



New releases from Husqvarna

During World of Concrete, Husqvarna Construction showcased upcoming battery powered light construction equipment that will help contractors work without fuel, cords and direct emissions.

'PACE' battery system

The PACE (Powerful, Agile, Cordless, Electric) battery system was unveiled with the K1 PACE high power battery cutter during 2021. With K1 PACE, contractors can expect power and performance equivalent to gas powered cutters with all the additional benefits battery powered equipment brings to both operators and the environment. The K1 PACE can be paired with specially developed, battery specific diamond blades which will both be available during Q2 2022. The system can be utilised for more machines as the battery powered family expands in the future.

'i-Series'

This is a family of 36V battery powered products for a variety of different construction applications and is compatible with a broad range of Husqvarna's forest and garden products. Several of the newest construction products were demonstrated at World of Concrete 2022. These included the WT 15i battery powered water tank, which comprises of a compact and easy to use 15l water tank and an electric pump. It has an integrated hose, with a connector applicable for Husqvarna cutting or drilling equipment. The hose is 3m long to give contractors a comfortable distance to the cutting area. Also shown was the BV 30i which is a cordless and lightweight battery powered screed that operates with low vibrations and does not emit direct exhaust fumes.

Additionally, the exhibited DM 540i low weight battery powered drill motor fits in narrow corners, is optimally balanced and easy to use. It is optimised for handheld drilling most materials, but especially reinforced concrete with diameters up to 75mm. It can be mounted on the Husqvarna DS 150 stand to drill up to 100mm diameter holes, whilst the DM 540i can also be paired with Husqvarna's specially developed, battery

specific diamond bits, 'TW drill bits'. The DE 110i battery powered dust extractor is also compact and easy to transport, yet powerful, with the HEPA dust extractor being an excellent match for the DM 540i drill motor as well as other handheld equipment within the i-series 36V platform.

A new range of remote controlled demolition robots

First mentioned in PDi 6-2021, Husqvarna also showed its new range of 'DXR' demolition robots. The new range consists of: DXR 14, DXR 275, DXR 305 and DXR 315. The DXR models offer, on average, a power increase above 20% when compared to previous models. This results in more effective and powerful machines that allow the user to get more demolition work done, faster. Complementing this, the new machines have functionality that optimises available power in a way that allows work to continue at high power levels, even if the task gets tougher due to circumstances, such as hot environments.

With an all-new remote control unit, precise operation is easier than ever. The new unit enables an improved overview of machine status, which is said to contribute to increased uptime and productivity. The long distance remote connection keeps the user safer and clear of any potential risks, enabling work in challenging areas with a remote control range of up to 300 m. Fredrik Linnell, global demolition director at Husqvarna Construction stated: "With various multi tools and factory installed packages available, productivity and areas of application can be quickly enhanced. The new range has also been engineered to facilitate easier trouble shooting, reducing downtime even further."

Husqvarna also took the chance at WOC to talk about its 'Orange Evolution' where Blastrac and Diamatic have been integrated into the Husqvarna Construction brand (already mentioned in PDi during 2021). The new products displayed at World of Concrete will be shown at other tradeshows around the world, including bauma in Germany and Demcon in Sweden.

www.husqvarnacp.com

The ideal combination of performance and functionality

Small and restricted jobsites, such as residential areas and inside buildings, require machinery that delivers high performance as well as a small working footprint. The new Kobelco SK19 mini excavator combines a compact body with a high output engine for high power and efficient operation, excellent stability with superior weight distribution, and a well-designed, comfortable cab.

The new Kobelco SK19, which replaces the previous SK18-1E, delivers superior performance to its predecessor thanks to its bigger engine, new hydraulic system and newly designed working equipment. The company says that its Yanmar Stage V compliant engine delivers a 38% increase in power output (13.1kW versus 9.5kW), 10% increase in bucket digging force (16.7kN versus 15.2kN) and 26% increase in arm digging force (long arm/short arm at 9.3/11.4kN versus 7.4kN). Lifting capacity has also been increased by 24% (based on 2.5m reach, -0.5m from ground level over the front), while travel speed, digging reach and digging depth are also significantly improved.

For jobsites that require close working against walls, ditches and roads, the SK19 benefits from a number of important features. The width of the crawler is 980mm when retracted to enable access to tight passageways, which increases to just 1,320mm when extended. The compact tail swing provides operating efficiency in limited spaces, while the boom swing angle is 12% wider than the previous SK18-1E. Durability and reliable construction is assured through the reinforcement of the SK19's key machine parts. The boom, arm and swing bracket all have large cross section segments for



added attachment strength and spring steel cylinder rod guards are standard for the bucket and arm cylinders. The dozer cylinder rod guard also protects the dozer cylinder from damage.

Like with all Kobelco machines, the safety of the operator and other workers on the jobsite is of paramount importance. Both the SK19's cabin and canopy meet ROPS, TOPS and FOPS safety standards and the LED boom light, optional LED front/rear lights and optional LED pluggable orange beacon provide excellent illumination on site. The rear view mirrors (left and right) and optional rain visor also enhance visibility of

the jobsite. All models are also available with long and short digging arms.

Commenting on the launch of the all-new Kobelco SK19, product manager, Wesley Elverding, said: "Mini excavators are vital to our overall product line up, and the introduction of the SK19 demonstrates how we are developing our mini excavator technology and machine concepts. Tailored for productivity, the new SK19 offers increased arm digging forces and shorter overall cycle times, best in class hydraulic auxiliary lines, versatility and improved stability."

www.kobelco-europe.com

Construction equipment industry stands on solid ground

The high order intake in the construction equipment industry is allowing manufacturers with production sites in Germany to look forward to 2022. When companies will be able to turn orders into turnover, on the other hand, is an open question, as materials continue to be in short supply and supply chain problems are delaying the production of construction equipment. The statistics clearly showing a gap between incoming orders and turnover.

In 2021, the construction machinery and building material plant sector achieved a 22% increase in turnover to €16.7B compared to the same period the previous year. The construction equipment sector achieved a nominal increase of 18% to €124B. Incoming orders were up 53%, with export turnover being €8.1B whilst domestic turnover was €4.3B. It is gratifying to know that building construction, earthmoving and road construction machinery show a homogeneous distribution with road construction machinery achieving the highest increase in turnover with 22%. This development catapults the industry back to the record level of 2018/19. Nevertheless, expectations for industry turnover are cautious this year.

The biggest risk, in the experience of many manufacturers, lies in the ongoing disruptions to supplies. "We are pushing a wave of orders ahead of us that we will probably have to carry into 2023 if the situation remains like this," fears Joachim Strobel, chairman of the VDMA's construction equipment division. "Despite full order books, the industry can only expect a maximum increase in turnover of 7% for the current year. Profit will also fall short of our expectations because we have to contend with enormously increased costs."

Economic stimulus programmes

The USA, Europe and China remain the most important market regions and together account for 75% of the global market. Construction equipment sales in 2021 increased by 30% in the US and 28% in Europe compared to the same period last year. China weakened with a 7% decline. Globally, sales rose 18% overall (32% excluding China although the country remains the largest single market). The US market looks promising for the next few years thanks to extensive economic stimulus programmes, with it envisaged that 'good times' are ahead for the construction sector in the United States. In

Europe, too, economic stimulus programmes launched in the pandemic will have a supporting effect for the next two to three years. In China development is uncertain with a risk of a real estate crisis still being present there.

In Germany, sales of construction equipment rose by almost 10% last year, and demand from customer industries remains high for the current year. This boom will even be able to defy the shortage of skilled workers and material bottlenecks.

Return to personal meetings at trade fairs

At the top of the agenda for construction equipment manufacturers are the tasks of reducing CO2 and advancing digitalisation. These are also key topics at the leading trade fairs for the construction equipment and building materials plant sector this year. ceramitec in June, glasstec in September and bauma in October will showcase trend setting developments. "We are all looking forward to our presence at trade fairs. At last, we can again show on a large scale what technical progress we have already worked out so that we can achieve the climate policy goals," emphasises Franz-Josef Paus, chairman of the VDMA Construction.

Exclusive Diamond Sponsor



www.sdca.se

DEMCON 2022[®]

24-25 November, 2022
8th Edition of the Show at Infra City,
Stockholm, Sweden

**Demolition • Concrete Cutting • Diamond Tools • Concrete Floor
Grinding & Polishing • Concrete Dust & Slurry Extraction •
Hydrodemolition • Remediation • Recycling... and a lot more.**

Exclusive Ruby Sponsor

Pentrunder[®]
CONCRETE CUTTING SYSTEMS

Exclusive Platinum Sponsor

Husqvarna[®]

Gold Sponsors



Silver Sponsors



Demcon is supported by

Official Show Magazines

Organiser





NEW EDGE TRM831

wheeled mounted trommel

Edge Innovate has revealed its largest mobile trommel to date with the launch of the new TRM831 at America's leading compost conference organised by the US Compost Council.

Edge's latest offering will be one of the largest wheel mounted trommels on the market and has been designed to provide operators with unrivalled production rates. With extensive stockpiling capabilities thanks to its end discharge conveyor design, the TRM831 design prevents product cross contamination and reduces the double handling of material. This is complimented by a remote operated, 180° radial fines conveyor which has the capacity to stockpile up to 1,030m³.

The Edge TRM831 portable trommel has been designed for the high capacity screening of various applications including topsoil, compost, sand, household waste and construction and demolition waste. With a wide range of different drum types and screening media available, the TRM831 can be customised to suit the customers exact application requirements.

Design features

The TRM831 incorporates a host of design features such as a remote 180° radial fines conveyor as standard, an eco-power saving functionality which reduces unnecessary running costs, and a user friendly control panel for the easy adjustment of machine parameters. With a screening area of 57m², the TRM831 is fitted with a variable speed 2.3m x 9.3m long screening drum, powered via an efficient hydrostatic drive system. Screening efficiency is ensured thanks to a 9.3m long drum with hydraulically adjustable drum cleaning brushes.

High production rates, said by Edge to be provided by the TRM831, are maintained thanks to Edge's intel-

ligent load management system which prevents drum overload ensuring that the trommel screen is always operating at optimum performance even with minimal supervision. Enhanced trommel screening results are achieved thanks to a variable drum screening angle. The TRM831 encompasses a 1,500mm wide, variable speed feed conveyor complete with load sensing and automatic feeder shut down to ensure maximised uptime. Additional hopper options include a reject grid and a two deck vibrating screen for the pre-treatment of the feed material. Edge's HMI control panel with an intuitive operating system allows for sequential start up and the customisation of operating parameters which ensures the TRM831 runs at optimised capacity across all applications.

Operational features

Utilising the latest engine technology, the TRM831 is powered via a 140kW Caterpillar C4.4 Tier 4 Final / STAGE V engine providing extremely low engine



and noise emissions. Further fuel savings are said to be made possible thanks to Edge's unique 'Eco-Power Saving Mode' which automatically reduces engine speed to idle when not processing material for a set period. For enhanced savings and zero emissions, the TRM831 is also available with a direct electric power source configuration.

The TRM831 discharges fines material via a radial fines conveyor with a discharge height of up to 6m. With 180° radial functionality as standard, the radial fines conveyor facilitates the creation of stockpiles and is designed to reduce the double handling of material by up to 75%. A wireless remote with an operating distance of up to 100m gives the operator control over engine and feeder speed, screening angle, tipping grid cycles and full control of the radial fines conveyor including radial functionality and discharge height adjustment.

The TRM831 has also been designed to provide operational ease and quick maintenance access. Thanks to a large canopy and uplifting drum bin doors, easy access is provided to the power unit and trommel drum for essential maintenance. A quick drum exchange is facilitated via a hydraulic sliding feeder and hydraulic raising drum cleaning brushes. This allows operators to simply lift out the existing drum to be replaced with the various drum types available. Edge's largest wheel mounted trommel is also fitted with a tri axle bogie complete with fifth wheel hook up and air brakes. This makes transportation between sites easy with redeployment taking a matter of minutes thanks to hydraulic folding discharge conveyors and chassis jacks.



A GLANCE AT THE COMING BAUMA

show in October 2022

It is looking good for bauma this year with close to 100% of exhibition space now booked. There are only two worries; that there will not be enough beer in October due to that Oktoberfest taking place at the same time in Munich and that a new dangerous coronavirus mutation will appear.

The whole world is slowly coming out of a pandemic storm that for more than two years has paralysed the exhibition sector in particular. Thousands of regional and international exhibitions have been cancelled or postponed since the end of 2019. During this period, a few shows have taken place but under strict restrictions. It is only this year, 2022, that our industry feels safe enough to consider going ahead with full participation trade shows.

Lifted restrictions

One of the shows set to be held, and also the biggest and most important show for the global building and construction industry, is bauma. For precautionary reasons, the organisers decided to push the show back from April to October 2022, which has proved to be wise decision. At this stage, more and more countries in Europe are lifting restrictions due to Covid-19 no longer being considered as dangerous to society as it once was. With the new Omicron mutation, people infected are not getting as sick or even dying to the extent that happened earlier in the pandemic. However, there is no guarantee that a new type of mutation will appear, possibly even deadlier than Omicron, although scientists

believe that the more the virus mutates the weaker it gets. We all hope that everything is on the right track and that bauma will take place as planned in Munich from 24-30 October, 2022.

Crowded in hall A1

PDi Magazine will as usual exhibit in booth A136 in hall A, and we welcome all any readers or advertisers

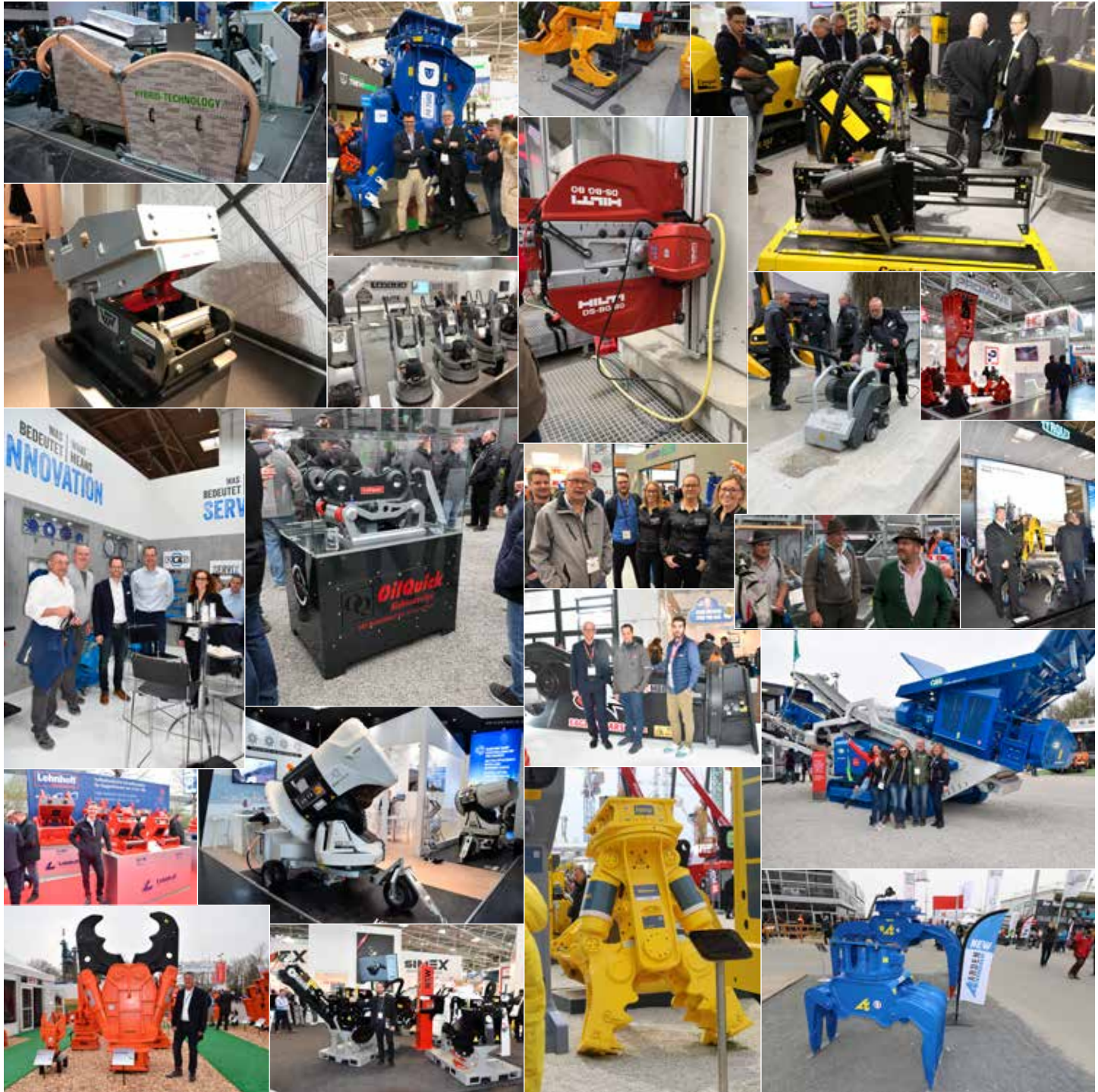


attending bauma to come and see us there. In this article we will give you an idea of companies exhibiting at the show in the concrete sawing and drilling, concrete floor grinding and polishing, demolition, recycling, hydrodemolition, remediation, etc. industries.

In general, the booking situation for this year's bauma looks very good. 97% of the space is booked and confirmed at the time of writing this article. The booking numbers have given Klaus Dittrich, chairman and CEO of Messe München, a reason to be very optimistic about the upcoming fair: "This feedback is a clear signal of our customers' intention to take part in bauma. In the personal conversations we have with exhibitors and visitors, we hear one thing over and over again: they are really looking forward to having face to face discussions and, of course, to experience the special atmosphere that only bauma can create. I am really confident that the situation will soon have improved to the point that we will be able to put on an exciting bauma that will attract a large number of international companies and visitors."

The mining sector will also at this bauma be broadly represented and the organisers will offer the first of its series of webinars. The show will focus this year on five key topics that will be covered by exhibitors, the sup-





porting programme and the trade fair's very first series of webinars. These comprise of 'Zero emissions'; 'The digital construction site'; 'Tomorrow's construction techniques and materials'; 'The way to autonomous machines' and, 'Mining – sustainable, efficient, reliable'. The webinar series will begin in March and will be conducted in English where industry experts will use the new format to explore bauma's key topics in depth.

PDi Magazine's strong focus is of course on the industries and sectors covered in the magazine. When having a look at the exhibitors in hall A1, the hall very much looks like the show held in 2019. The majority of the players are there. Some have changed the position of

their booth, but most of them are in the same spot. Some have extended their booth and some have made their booths smaller. In hall A1 the global concrete cutting, diamond tool, concrete floor grinding and polishing, as well as hydrodemolition industries are gathered, including demolition robot manufacturers including Brokk and Husqvarna. Heavy demolition and recycling attachment manufacturers exhibiting can be located in halls B4, B5 and B6 and in the outdoor area near B6 and C6. Also the large demolition carrier manufacturers and mobile recycling unit manufacturers can be found in these areas, or nearby.

At this point PDi Magazine cannot think of any

manufacturer related to the sectors PDi covers that has announced that they will not exhibit at bauma this year. The prospects at this point in time look very good so that October in Munich will be a great month not only for the beer consumption, because of the Oktoberfest, but also for the world's biggest construction machinery show, bauma. Let's hope that the main worry will be that if there will be enough beer to satisfy both the bauma and Oktoberfest visitors.

If you would like to study the line of exhibitors at Bauma 2022 please check out this link:
<https://bauma.de/en/trade-fair/exhibitor-directory/>
www.bauma.de



Aligned diamond
Now available



ASO 1.Organize Sanayi Bolgesi Gokturk Caddesi No:4
P.O.Box : 06935 Sincan / ANKARA / TURKEY
www.sonmak.com sonmak@sonmak.com



A1, EWE
Baugeräte und Werkzeuge
Construction equipment and tools



A2
bauma Digital /
Sensorik und Diagnose
*bauma Digital /
Sensor technology and diagnostics*



A3, A4
Antriebstechnik und Hydraulik (A3);
Motoren und Hydraulik (A4)
*Transmission engineering and hydraulics (A3);
Motors and hydraulics (A4)*



A2, A5, A6, EOE
Zubehör, Ersatz- und Verschleißteile
Accessories, spare and wear parts



B0
Innovationshalle LAB0: bauma Forum, Science Hub, Start-Ups, MIC 4.0 und VR Experience
Innovationshalle LAB0: bauma Forum, Science Hub, Start-Ups, MIC 4.0 und VR Experience



ICM
THINK BIG! Beruf und Karriere
THINK BIG! Work & Careers



C2
 **MINING INSIDE**



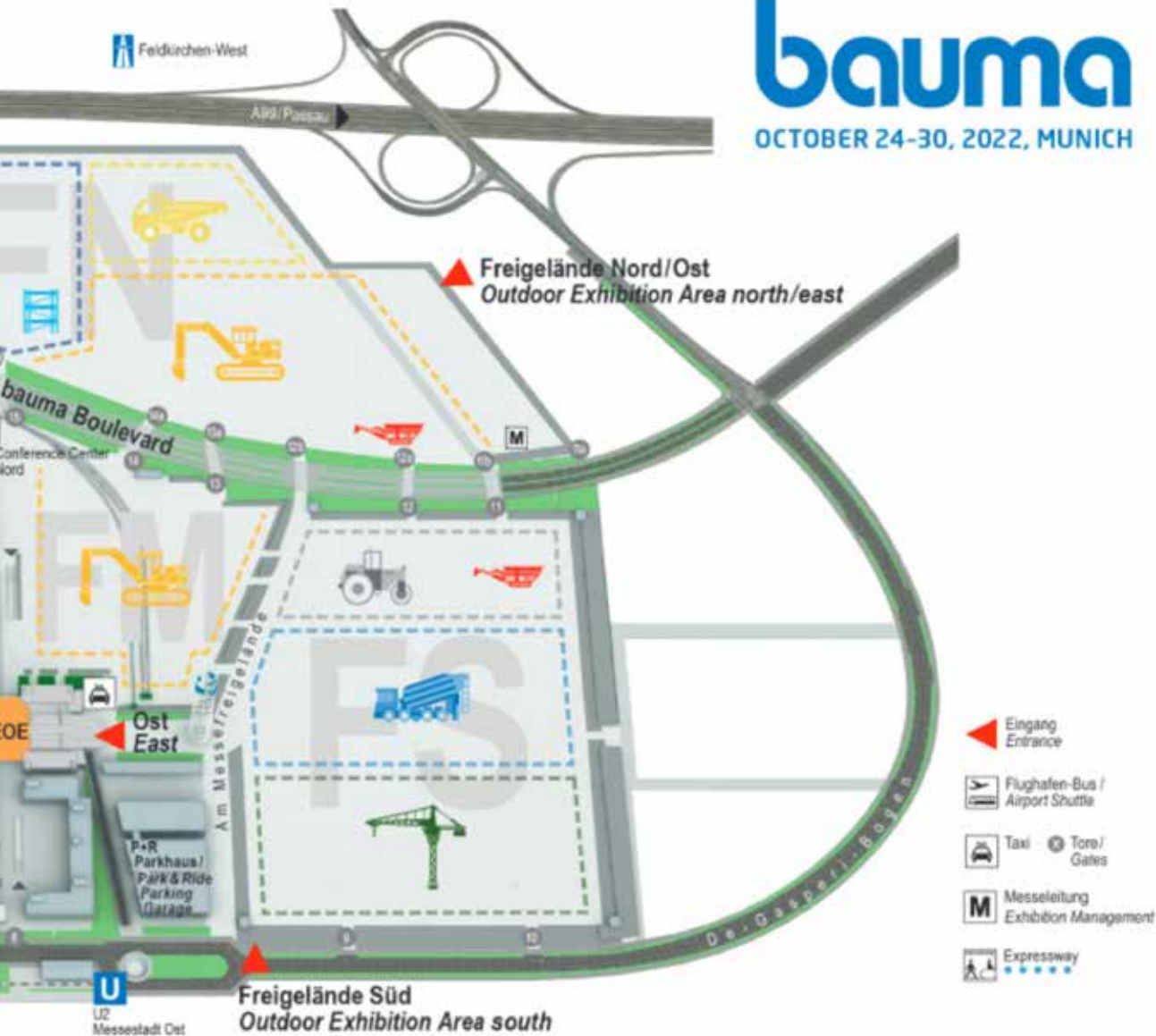
C3
Betonstahlbearbeitung
Reinforcing steel processing



C3
Tunnelbau
Tunnel construction

bauma

OCTOBER 24-30, 2022, MUNICH



- Eingang Entrance
- Flughafen-Bus / Airport Shuttle
- Taxi Tore / Gates
- Messeleitung Exhibition Management
- Expressway

- B1, C1 FS** Herstellung zement-, kalk- und gipsgebundener Bauelemente; Betonaufbereitung
Production of cement, lime and gypsum-bound building materials; concrete production
- B5, B6 C4-C6 FN+FM** Baumaschinen und Anbaugeräte
Construction machinery and attachments
- B3 FN** Schalungen und Gerüste
Formworks and scaffolds
- B2 FN+FS** Aufbereitungstechnik und Rohstoffhandling
Mineral processing and handling of raw materials

- B4 FN** Bau- und Nutzfahrzeuge
Trucks and construction vehicles
- C4 FS** Hebezeuge
Lifting appliances
- FS** Straßenbau
Road construction
- FN** Drilling

DOOSAN LAUNCHES NEW DX50Z-7 AND DX55R-7 MINI EXCAVATORS

The first of the company's next generation mini excavator range with a new shared global styling, the DX50Z-7 5.4t and DX55R-7 5.7t Stage V compliant models have been launched by Doosan Infracore Europe.

Both models are powered by the Doosan D18 Stage V compliant diesel engine providing 36.4kW of power at 2,200rpm. As a result, the company claims that the DX50Z-7 and DX55R-7 offer the highest power and torque in their class and cover a wide range of applications including heavy duty work. A novel platform design featuring new upper structures has increased durability/robustness and this is complemented in both new mini excavators by a larger working range, coupled with higher lifting capacities and digging forces. The machines also offer a high auxiliary flow of 80l/min to enhance work with attachments.

Newly designed cast counterweights ensure machine balance and stability when working. An additional 200kg bolt mounted counterweight option is available for the DX55R-7. As well as offering performance, versatility, durability and ease of maintenance in the 5t to 6t range, the DX50Z-7 and DX55R-7 mini excavators feature a new larger, roomier cab, providing excellent operator comfort and controllability.

New high comfort cab

The new DX50Z-7 and DX55R-7 are packed with a host of innovative features. Nowhere is this more evident than in the new high comfort cab, which has a full glass entry door to maximise operator visibility on this side of the machine from inside the cab. The high luminance LED work lamps on the cab further enhance visibility and additional LED lamps are also available as an option. The enhanced HVAC system provides more nozzles to direct warming and cooling air, including both front and rear pillar nozzles that together help to improve system performance. Larger nozzles are also used to ensure direct and sufficient airflow for operators and manual adjustment of the opening/closing of the nozzles is also possible. The HVAC system and the DAB

audio can be controlled through the touch screen and the feed from the optional rear view camera can also be displayed on the latter. The monitor also shows the flow rate setting, which can be controlled in 10 steps with the thumbwheel joystick.

New dozer blade and control

The DX50Z-7 and DX55R-7 incorporate a new dozer blade providing, according to the company, both a higher dozer lifting height and dozer digging depth than other machines on the market. The machines also have a new dozer blade control lever. Using the dozer lever, the operator can select between low and high speed for the levelling blade hydraulics. Travel speed can also be selected by using the travel selector button on the dozer lever. When hydraulic oil pressure rises due to going up a slope while driving in the high speed mode, the travel speed auto shift valve automatically resets the travel speed to low in order to enhance the operator's driving convenience and to reduce machine stress.

The dozer control also provides a new blade floating function - pushing the dozer lever all the way forward puts the lever into the detent position and leaves the dozer blade in a 'float' position. Customers can also choose the optional 'Dozer lock function', which prevents dozer blade creep. If the machine has the optional blade lock valve installed, the floating function will not work when the lever is in the detent position.

Visibility and workability are improved by increasing the bucket protrusion distance beyond the tracks. Placing the boom swing cylinder on the left hand side of cab allows the operator to work right up against walls and other structures on the right hand side of the machines. The fuel tank and boom swing cylinder have been positioned at the base of the cab, with the MCV now on the right side of the machine, improving visibility for maintaining and working on the MCV. Furthermore, the DX50Z-7 and DX55R-7 mini excavators both have Doosan's latest 'DoosanConnect' system installed as standard, which provides a telematics management system for the excavators, by collecting data from sensors on the machines.



Allu China launches the new DC Series

Allu has introduced its new Allu 'Transformer DC Series' for the Chinese market following on from the opening of its Chinese manufacturing plant in 2021 tailored to the specific requirements of Chinese customers.

The Transformer DC Series are screening attachments for a variety of screening, crushing, mixing, and aerating applications. All models are equipped with two hydraulic motors for maximised processing power. The attachments have reinforced sides, making the bucket robust and durable even in demanding environments and for dealing with demanding materials. Operations director for China, Pierre Bujes says: "Allu has heavily invested in China and listened to our customers in China. Introducing the new DC Series, which Allu has tailored just for the Chinese market, will strengthen our support to our customers and operational presence, to help grow the region whilst being competitive in the local market."

The DC Series offers two different blade options and can be equipped with 'TS blades', making it ideal for applications that require screening, separation, and aeration. The TS blades rotate between the screening combs, and the final fragment size is 25mm-50mm. This structure is unique in that the fragment size of the final product can be changed by repositioning the screening combs. This allows two fragment size variations to be produced with the same attachment.

When equipped with 'X-blades', the attachments are ideal for applications requiring stabilisation, mixing, aeration and crushing. The structure is clog proof and the capacity remains high even with wet materials. Thanks to the design, the Allu Transformer DC Series with X- blades are well suited for even the most demanding mixing and pulverising tasks including waste material handling and processing, compost mixing and aerating, pipeline backfilling/padding, stabilising clay, cable backfill, environmental remediation and soil and gravel screening

CM-10AF CORE DRILL MOTOR

WITH CHANGEABLE
GEARBOXES
SG30 & SG60



- » High performance, efficiency & reliability
- » Two mechanical gears, 17 electronic gears and a reverse gear
- » Quick release motor mount
- » Versatile 3 phase motor with a drilling range of 40mm to 1000mm
- » Built-in autofeed system & external radio remote control system (coming soon)
- » Extendable column lengths, 1100mm and 1980mm sections
- » No external inverter box needed, just plug directly into the power supply
- » Four adjustable guide carriages with eight rollers for precise & low vibration drilling
- » Reliable slip clutch for gearbox damage protection

01582 599 933

sales@dymatecuk.com

www.dymatecuk.com



Komatsu breakers

Komatsu hydraulic breakers provide superior impact energy in a variety of rock and concrete demolition applications: you can count on exceptional performance and efficiency whether you're scaling a tunnel, running a pedestal-boom on a quarry, or tearing out reinforced concrete masonry.



B-series

H-series

V-series