

**News**

**NEW BOOM  
MOUNTED DEMOLITION  
CRUSHER FROM ALLU**

Page: 22

**Business**

**ROTOTILT AND STEELWRIST  
ANNOUNCE ALLIANCE**

Page: 6

**Special Feature**

**NEW DEMOLITION  
EXCAVATOR MODELS**

Pages: 12-16

**Special Feature**

**NEW MOBILE CRUSHING,  
SCREENING AND SH-  
REDDING EQUIPMENT**

Pages: 26-30

**Reports**

**BUSINESS IN  
BERLIN AT  
FACHTAGUNG  
ABBRUCH 2020**

Pages: 33-36

**BUILDER FINDS ROBOTIC SOLUTION FOR HISTORIC**

# DEMOLITION PROJECT

Pages: 74-75

**Special Feature**

**BREAKING GOOD!**

Pages: 41-45

**News**

**BROKKOLOGY  
PODCAST WITH  
MIKE MARTIN**

Page: 18

**Special Feature**

**A DRUM ROLL  
FOR DRUM  
CUTTERS!**

Pages: 50-52





new





# EXCELLENCE LINE HITS SMARTER

Make your fleet management easier and processes more efficient with the renewed Rammer Excellence Line. All of the Excellence Line products are now integrated with RD3 technology – the first ever monitoring system for hydraulic hammers. You can access operating hours and location tracking easily in the My Fleet platform. In addition, the hammers are improved with maintenance features to increase operating costs and reflective stickers to enhance safety and visibility.

**Go to [rammer.com/excellence](https://rammer.com/excellence)  
for more information and contact your local dealer.**

Sandvik Mining and Construction Oy / Lahti, Finland / [rammer@sandvik.com](mailto:rammer@sandvik.com) / [www.rammer.com](https://www.rammer.com)

Find us on  [@rammerhammer](https://www.facebook.com/rammerhammer)  [YouTube @rammerhammer](https://www.youtube.com/rammerhammer)

**Ram  
mer®**





ONLY WIRE

**WIDECUT**

18:19



**BEYOND EXPECTATION  
ONLY WIRE!**



**Groove**



Ø15.0\*40 bpm

**Steel**



Ø10.2\*48 bpm

**Concrete**



Ø10.5\*40 bpm

**Finish**



Ø9.0\*48 bpm

[www.widecut.com](http://www.widecut.com)





Professional Demolition International Magazine

**Address:** P.O. Box 786,  
SE-191 27 Sollentuna, SWEDEN

**Visitors address:**  
Skillingevägen 14A, SE-192 71 Sollentuna, SWEDEN

**Phone:** +46 8 631 90 70  
**E-mail:** info@pdworld.com  
**Website:** www.pdworld.com  
**ISSN Registration:** ISSN 1650-979X

## EDITORIAL STAFF

### Editor-in-Chief

Jan Hermansson, Jan.Hermansson@pdworld.com

### Assisting Editor-in-Chief

Anita do Rocio Hermansson,  
Anita.Hermansson@pdworld.com

**Editor:** Vitor Hermansson, vitor@pdworld.com

**Editor Europe:** Mikael Karlsson,  
mikael.karlsson@pdworld.com

**Editor North & Central America**  
Jim Parsons, jim.parsons@pdworld.com

**Editor South America**  
Luiz Carlos Beraldo,  
luizcarlosberaldo@gmail.com

**Editor Russia & Eastern Europe**  
Andrei Bushmarin,  
andrei.bushmarin@pdworld.com

**Editor Africa**  
Kevin Mayhew,  
designmp@iafrica.com

## SALES OFFICES

### International Sales Director

**Germany/Austria/Switzerland/UK & Ireland  
/BeneLux/Finland/France/Spain/Portugal and Italy**  
Andrei Bushmarin  
Phone: +7 921 949 27 81  
E-mail: andrei.bushmarin@pdworld.com

**Sweden/Norway/Denmark/Liechtenstein/North  
America/South America**  
André Hermansson  
Phone: +46 (0)8 631 90 70, Mobile +46 (0)70 979 04 03  
E-mail: andre@pdworld.com

**Australia/New Zealand/Asia Pacific/Korea/Japan  
and rest of the world:**  
Contact PD*i* editorial office in Sweden  
Phone: +46 (0)8 631 90 70, Mobile +46 (0)70 979 04 03  
E-mail: info@pdworld.com

**Publisher**  
Jan Hermansson

The magazine PD*i*, Professional Demolition International is published five times per year with a worldwide circulation of 10000 copies. The annual airmail subscription rate is US\$ 45. All subscription correspondence should be directed to: The subscription department, SCOP AB, P.O. Box 786, SE-191 27 Sollentuna, Sweden. PD*i* is mailed by second class postage. ©Copyright SCOP AB 2000-2020

Cover picture:

PD*i* Magazine is a member of the following associations:



# CONTENTS

PD*i* • issue no. 2 March - April 2020 • Volume 20

## REGULARS

### Editorials

- 6 The crises has brought us closer to each other
- New Dates for EDA Annual Convention 2020
- 8 A surreal world
- 10 To all my dear friends, let's look ahead

### Business

- 6 Genesis Attachments promotes David Palvere to general manager
- Rototilt and Steelwrist announce alliance
- Steelwrist's Peter Lam appointed APAC vice president
- 8 The European Demolition Association welcomes Doosan as its latest member
- Leah Glucoft expands role
- 10 Samich announces expansion and acquisition by Mikea Engineering
- EDA welcomes PEDMEDE
- Facemasks from Ashine Diamond Tools
- Incorrect information

### Jobsite Report

- 49 Tyrolit segments impress in Russia
- Demolishing foundations with a Kemroc cutter wheel
- 53 German premiere of the PC4504CE 'bump grinder' exceeds all expectations
- 74-75 Builder finds robotic solution for historic demolition project

### News

- 18 Swing loaders, site dumpers and more from Mecalc
- Brokkology Podcast
- 19 The only heavy duty rail cutter on the market
- 20 Husqvarna introduces the DM 400 / DM 430 drill motors
- Bobcat shows innovations at Conexpo/Conagg 2020
- Doosan DX800LC-7 crawler excavator
- 22 Premiere of new demolition and quarrying Allu Crusher in Las Vegas
- Introducing the new Tyrolit WCE18 wire saw
- 24 GSSI showcases its leading GPR systems at Conexpo/Conagg
- Built for high reach demolition tasks
- 31 Solutions for spreading disinfectant fluids
- The European Decontamination Institute welcomes Astillo as its latest member
- Pentrunder's new HFI technology platform



- 38 New 'Super Compact' Dynaset hydraulic generator models
- Doosan launches hybrid wheel loader
- Ausa exhibits at two of US biggest trade shows
- 66 erkat 'Pro' bracket
- Two new CB 'Concrete Busters'
- North American customers to benefit from new Conjet appointment
- 67 Sennebogen becomes member of EDA
- Rammer new member of EDA
- Lavina power trowel
- 69 A new level
- Atomised water mist dust suppression system
- Epiroc introduces 'HATCON'
- 76 The solution on bridge, tunnel and road sites
- New breakers and new pulverisers
- 78 Alternative drainage from Ditch Doctor
- WLP offers a solution to contain coronavirus
- Reports**
- 33-36 Business in Berlin at Fachtagung Abbruch 2020
- 54-58 NDA's annual show is a true hit in the capital of the Lone Star State
- 71-72 'Wind of Change' blows through the Russian demolition industry
- Shows**
- 46 Covid-19 paralyses the exhibition industry
- 60-64 Conexpo/Conagg ends one day earlier

## Special Features

- 12-16 A battlefield report on heavy hitters
- 26-30 New mobile crushing, screening and shredding equipment
- 41-45 Breaking Good
- 50-52 A drum roll for drum cutters!







## Words from the IACDS President

### The crises has brought us closer to each other

Recently in Germany we have had the successful BeBoSa trade fair and two successful annual conventions, but then, as often happens, things turned out differently to what was expected. A virus now has a firm grip on the world and everything we planned two months ago has long since been overtaken by the sad reality of day to day events.

Different and varying measures have been put in place in most countries to slow the spread of the coronavirus pandemic, with borders being closed and most travel now impossible. Most countries have brought back their citizens from all over world, with air traffic coming to a practical standstill. Schools are also closed and children are taught at home, with unessential shops, bars, restaurants and all leisure facilities forced to close for the foreseeable future. Most countries have been badly affected, but what unites us all is the fact that we are experiencing a certain 'deceleration' of our everyday lives, due to quarantine and home working.

Our industry however is still allowed to work in most countries, although with certain restrictions. As a result, this crisis is not yet hitting us with full force and we can hopefully get through it successfully. Maybe we will learn to appreciate some of the changes forced upon us and learn some lessons about what is truly important.

When all of this is over I am looking forward to meeting you again at one or other of the many postponed events. Its seems as if the world has grown up a little during the crisis and that we have moved a little closer, with everyone being more considerate of others than before. Let's hope it stays that way. Stay safe and at home.

**Michael Findeis,**  
**President of IACDS**

## New Dates for EDA Annual Convention 2020

Due to the critical situation caused by the Covid-19 across Europe, the EDA Board has decided to postpone the annual convention that was to be held from 4th to 6th June 2020, in Belgrade. In order to ensure the safety and the enjoyment of the attendees of this annual meeting, EDA has set new dates and destination: Paris, from 15th to 16th September 2020. A preliminary program has been set.

**Tuesday 15 September** (Exclusively for direct EDA members)

09:00 - Arrival of participants, accreditation and welcome coffee

Workshop 1: Power companies and asset manager of power plants Lunch (for participant in the workshops)

Workshop 2: Circular economy in construction  
17:00 - EDA General Assembly (for EDA members only)

For all participants:

19:00 - Welcome cocktail

**Wednesday 16 September**

Professional program:  
Multilingual conference with simultaneous interpretation.

09:00 - Official Opening

09:30 - Conference session 1

The EU Green Deal. What does it mean and how it will be developed? The economical part of Circular Economy. How to make sense in a competitive World?

Case story: The daily challenges of demolition contractor in the UK and how to overcome them

Coffee break, networking and exhibition  
Conference session 2

Demolition of power plants in Europe: Understanding the dimensions and drivers of the market. Demolition and recycling in other markets: How companies are evolving and working together

Case story: Demolition of the Morandi bridge

Lunch break, networking and exhibition  
Conference session 3

Digitalization in the construction industry. How the working environment for the companies, users and equipment is changing now  
Biggest changes in the small tools. Trends and challenges in power tools for demolition  
Case story: Developing demolition and recycling business models in Serbia

Coffee break, networking and exhibition  
Conference session 4

Lessons learned from the Japanese Demolition Industry

Topa 5 hazardous substances in demolition projects and the risk of not doing decontamination

Case story: cooperation in demolition, bringing down a train station in Lyon

17:30 - End of the professional program

For all participants.

19:00 - Departure for the Special Dinner with live show in the Lido de Paris Cabaret. Registration for the event can be done through EDA's website: [www.europeandemolition.org](http://www.europeandemolition.org)

## Genesis Attachments promotes David Palvere to general manager

Genesis Attachments has announced that David Palvere has been promoted to the



position of general manager. In this role, David will oversee the operation of Genesis' Superior, Wisconsin location, being responsible for the sales, operations, finance, engineering and administrative functions. He will also collaborate with NPK leadership on strategy and direction for Genesis' continued growth. Most recently director of business development, David has been with Genesis for 20 years and held various leadership and sales positions.

## ROTOTILT AND STEELWRIST ANNOUNCE ALLIANCE

As fully automatic quick couplers continue to grow in popularity with more manufacturers releasing solutions, interchangeability between different manufacturers has become an increasingly important topic. Recently Steelwrist and Rototilt have announced their goal to achieve global interchangeability between work tools with integrated oil couplings.

The aim of the alliance is based on 'Symmetrical Quick Couplers' (S-type), the well-known open industry standard which is the world's fastest growing type of excavator quick coupler. The main aim of the symmetrical standard has been to safeguard interchangeability between manufacturers of quick couplers, tiltrotators, buckets and work tools. One reason for its success is that it is open and not controlled by one specific manufacturer.

"When we now launch and extend our 'QuickChange' range of full automatic quick couplers, it was only natural to build on the symmetrical standard, which we have followed since 20 years, that was already compact, relatively light weight and robust.

With the addition of oil couplings and an electrical interface, it will be unrivalled on the international market," says Anders Jonsson, CEO of Rototilt Group AB.

The underlying reasons of forming the Alliance was to increase safety, flexibility and efficiency for excavator owners, excavator operators and ground personnel, as work tool interchangeability is ensured between different manufacturers products. It will also strive for a competitive and open industry standard that is not controlled by a single producer and to make it cost efficient to retrofit adaptor brackets to be used as well as new buckets and work tools.

The bold ambition of the alliance is that it should be open to join for other manufacturers who have developed compatible solutions. "We clearly see that there is a need for the alliance as our SQ range has been booming since we launched almost three years ago. The main reason why we have been working to create the alliance is that we do not believe in locking customers into proprietary solutions that they must live with forever," says Stefan Stockhaus, CEO of Steelwrist AB.

## Steelwrist's Peter Lam appointed APAC vice president

Effective as of 1 May, Peter Lam has been appointed to the position of vice president of the Asia Pacific region where he will be responsible for further accelerating the commercialisation and sales of Steelwrist products and solutions. Peter has a strong understanding of the construction equipment industry, with experience gained from leading roles within product management, business development and special application sales at Volvo Construction Equipment. This makes Peter an important addition to the company and its efforts to grow internationally. "We are very pleased to welcome Peter as vice president APAC at Steelwrist. Peter will take on the important role of leading the expansion of the business together with the local teams. Peter will also work closely with our demolition segment customers as part of his new role," says Stefan Stockhaus, CEO of Steelwrist AB. Peter will be based in Germany and report to Stefan Stockhaus.





# LAVINA

by  **SUPERABRASIVE**

## NEW GRINDER MODELS

# ELITE

S E R I E S

The new L16EU and L14EU are compact, lightweight and versatile machines for floor grinding and polishing. Great for both residential and commercial projects. Easy to use and transport.

- 1 phase, 200-240V, 12A (max)
- Variable speed
- Foldable frame
- Can be divided in two pieces for easy transportation



## L16EU

406 mm

## L14EU

335 mm





# A surreal world

I had the pleasure of attending the US National Demolition Association's annual event at the end of February, this time in Austin, Texas. About that time the dreadful Corona virus had started to spread all over the world, but fortunately I made it home. The last show to take place, before the world 'closed', was Conexpo/Conagg held in Las Vegas. Held about a week after the NDA event, the organisers, AEM, 'made it happen', but had to close the show one day early due as all flights to and from the USA about to be stopped. Some people attending the show in Vegas had quite some problems getting home. Some did not make it at all and are still stranded in various locations around the world; a tragedy they share with millions of people throughout the world.

I am soon 60 years old and I have never experienced anything like this before, not even close and I find it scary. This virus can either kill you or you hardly feel it. That's what is scary when we don't know how we will react to it. It is interesting to see how different countries are dealing with safety precautions. Sweden, where I live, has always been a country that prioritises safety, to an extreme in many instances I would say. But with the Corona virus it is different. The Swedish Health Authorities make daily broadcast instructions so all people in Sweden know how to react to the virus. Wash you hands carefully, social meetings with more than 50 people are forbidden, keep a 2m distance to other people, don't visit or get in close contact with people over 70 years and so on. However, this has been balanced with the authorities encouraging people to go outdoors as much as they can while other countries have more or less ordered their citizens to stay indoors.

When I go shopping at the local grocery store, it is crowded with people. It is impossible to keep a 2m distance. Now that spring has arrived in Sweden a lot of people here in Stockholm are enjoying a coffee or a beer in the sun and they sit rather close to each other. In Sweden there is no requirement for shops or restaurants to close. Everything is open, but of course many shops are almost empty unless it is a grocery store or the government owned liquor store chain Systembolaget. The latter has a total of 480 stores in the country and that is the only place you can buy alcohol over 3.5% other than in restaurants. Systembolaget is really boosting sales these days, as when many people put themselves in self-isolation, they tend to drink more alcohol. It is a crazy world indeed.

Even though many different service businesses such as hotels, restaurants, entertainers, theatres, concerts, cinemas and so forth are suffering from the effects of the Corona virus, the construction industry seems to carry on, which is the case here in Sweden. I have been talking to quite a number of suppliers of equipment and contractors and the work carries on. There are not many personal sales meeting with clients though, instead the use of virtual meetings have increased dramatically. Diamond tools and machinery are getting delivered in time to the different projects and the contractors keep on doing their job.

However, I feel it is just a question of time before this changes, with it all depending on for how long will this sort of 'limbo' go on. I don't know how much financial endurance there is. The hospitality industry has already exhausted its finances with very few companies having a buffer. In Sweden, many companies from this sector have already gone into bankruptcy and many more will follow if the current situation continues.

2020 has certainly not begun that well, but we must believe in the future and carry on, as there is no other way than forward. The Corona virus has slowed down our pace a bit that's for sure, but maybe that is something for the good as well. Despite all the terrible things that are happening to people around the world, maybe we can use the situation to stop and think about how we can do things differently when everything starts to move again.

I wish all of you the best and hope you take all the necessary precautions to avoid the Corona virus.

**Jan Hermansson**  
Editor-in-Chief  
[jan.hermansson@pdworld.com](mailto:jan.hermansson@pdworld.com)



## The European Demolition Association welcomes Doosan as its latest member

Doosan Infracore Europe the latest member of the EDA and is one of the world's leading demolition, construction, quarry and mining equipment manufacturers, being part of the Infrastructure Support Business (ISB) of the worldwide Doosan Group. Equipped with a broad business portfolio and a clear vision, the Doosan Group seeks constant innovation and change while enhancing the value of life with its focus on ISB, which is essential for the construction business and operation of major social infrastructures.

The Doosan product range offers a broad selection of products including crawler and wheeled excavators (with operating weights from 1t to 80t), wheel loaders (covering capacities from 1.9m³ to 6.4m³) and articulated dump trucks (with maximum payloads up to 41t). Its comprehensive selection of crawler excavators includes mini, midi, mid-size and heavy models covering operating weights from 1t to 80t, which includes a new range of specialist demolition machines. As well as

the smaller wheeled model, the DX57W-5, Doosan offers a choice of six mid-size wheeled excavators in the weight range from 14t to 21t, complemented by specialist material handling machines.

The Doosan range of articulated wheel loaders includes 13 models with bucket capacities from 1.9m³ to 6.4m³. Key features offered by Doosan wheel loaders include more productivity at lower cost, reliability, comfort and ease of maintenance. The Doosan range of articulated dump trucks provides a line of advanced, reliable and cost effective vehicles, offering significant competitive advantages.

The strength of Doosan lies in its capability to provide diverse products and services in multiple businesses ranging from power generation, desalination, construction equipment and engines to consumer and service businesses. Doosan is continuing its growth and transformation with the advancement of technology as its basis.

## Leah Glucoft expands role

Exodus Machines is pleased to announce that Leah Glucoft has been promoted to regional business manager for Western US and Canada. Leah will be responsible for direct revenue generation for both the ShearCore and BladeCore product lines. BladeCore provides long lasting replacement blades for mobile and stationary shears, while ShearCore designs and manufactures industry leading mobile shears and concrete processors.

Leah has been a part of the BladeCore team for the past three years serving as the territory manager for the western states and provinces. With a background in the industry, she knows the business exceptionally well. Rich Currie, vice president of sales for Exodus, states: "We are thrilled for Leah to step into the regional business manager role for both ShearCore and BladeCore. She has done an amazing job growing our replacement blade business in the Western US and Canada. Her passion for this business and dedication to her customers are second to none." Leah said of her new role: "I am delighted for the opportunity to not only continue providing my customers with the best replacement shear blades in the world, but also industry leading shears and demolition processors." With Leah joining the team, the sales territories team has also been updated. This includes ShearCore

regional business manager, Ian Lewandowski taking on additional states in the Midwest.

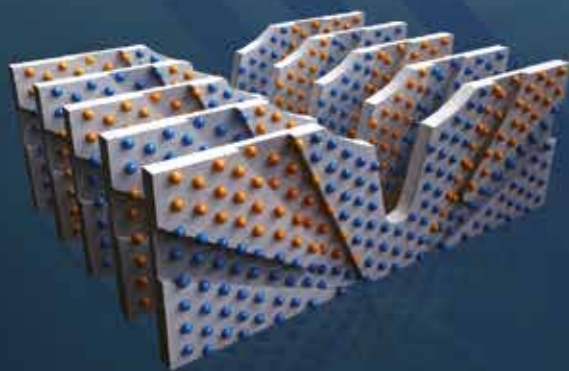
ShearCore is a division of Exodus Machines; it offers a full product line for the recycling and demolition industries that include the Fortress mobile shears and concrete processors, manufactured in Superior, Wisconsin. ShearCore operates under the simple belief: hire great people, deliver the best product, and focus on customer satisfaction. Additionally, ShearCore is the North American distributor for Copex portable and stationary shears.



edition **R+**

# ZENESIS

WORLD'S MOST ADVANCED  
PATTERNED DIAMOND TECHNOLOGY



## NEW **R+** PLATFORM

The edition **R+** is the optimized platform of edition **R** combining with alternating diamond layers. It reflects customers' demands and leads to the extreme performance and stability.



WALL SAW BLADE



FLOOR SAW BLADE



CORE BIT



EHWA DIAMOND IND.CO.LTD. [www.ehwadia.com](http://www.ehwadia.com) | [salesinfo@ehwadia.co.kr](mailto:salesinfo@ehwadia.co.kr) | Tel: 82 31 370 9300 | Fax: 82 31 370 9191





## Words from the EDA President

### TO ALL MY DEAR FRIENDS, LET'S LOOK AHEAD

First of all, I hope that you and your families are all well, far from the reach of the Corona virus which is doing so much damage. Without a doubt we are at one of those moments that can lead to a change in our behaviour and the ways in which we do things. However, I think that we should not miss the opportunity to learn lessons from this terrible ordeal.

For me, the first thing that has become obvious is that we all need each other. We are all elements of a mechanism in which each and every one of us is essential, because the failure of one can lead to the collapse of the entire system. The so called 'butterfly effect' of chaos theory has exploded in our faces: someone eats a wild animal, it does not matter where in the world and the whole of humanity is under threat from the effects of a pandemic. The final consequences of which we still do not know, although what we do know is that they are already tremendously painful and, for many, irreparable.

As a result, when we restart our activities normally, we will most likely have to address how to make our work centres not become new sources of contagion by adopting appropriate safety and protection measures for workers and the job site itself. Recently, with a few weeks between one thing and another, I had the opportunity to be present as president of EDA at meetings of the associations of demolition companies of Russia and of the United States. I have found that both countries, which for my generation represented two contrasting and antagonistic confronting worlds, are in fact, in terms of the people who live in each country, much more alike, if not the same, than we usually think.

In both cases I have met with noble and hard-working people, interested in improving their activities, sharing experiences, learning from both their own and others' successes and mistakes and, ultimately, to make their world a better place to live and work. They think not only of themselves, but also of those who are affected by their activities.

That is essentially what I want to share with you right now. We are all one people and it is our duty to do everything in our power so that each day is better and more hopeful than the previous one. I trust that we will all see each other again as soon as we have the chance.

#### About EDA

The EDA was founded in 1978 and is the leading platform for national demolition associations, demolition contractors and suppliers. The EDA has a strong focus on developments in Europe, which are of interest to the demolition industry.

info@europeandemolition.org  
www.europeandemolition.org



**Francisco Cobo, President of EDA, European Demolition Association**



### Samich announces expansion and acquisition by Mikea Engineering

Samich has since 1981 been considered to be one of the largest Italian manufactures of diamond tools and pads. Its offering now consists of diamond tools such as metal bonded, trapezoid, resin bonded, transitional as well as pads and ceramics for grinding, polishing, honing, surface preparation and

restoration of all kinds of flooring, with its tool being suitable for any kind of flooring machines on the market. Now Mikea Engineering from Rosciano, Italy, has acquired Samich and aims to develop and produce its own high quality floor grinding machines and systems for flooring treatments.

## EDA WELCOMES PEDMEDE

The European Demolition Association has welcomed PEDMEDE as its latest member.

The Panhellenic Association of Engineers Contractors of Public Works (PEDMEDE) was established in 1935 representing the construction sector in Greece, specifically companies dealing with public works construction. Its members consist of individuals from public works contractors as well as technical companies from grade A1 up to grade 7 (the upper grade), according to the Greek Ministry of Infrastructure & Transport classification.

PEDMEDE is located in Athens and operates 15 regional departments covering all Greek regions, as well as a separate section of construction companies. It is the sole Greek contractors association representing the country at a European level. In particular, it is a statutory member of FIEC (European Construction Industry Federation) and EIC

(European International Contractors), holding seats in steering committees of both entities.

At the core of its scope, PEDMEDE aims to ensure and promote its members' interests and welfare at all levels. Within this scope, it operates in close cooperation with public authorities, government representatives and key stakeholders representing the construction sector. To this end, it helps shape the national legislative framework, helping to form construction policies and initiatives and having a leading role in social dialogue. Additionally, PEDMEDE has enhanced its managerial capacity and is actively involved in EU funded projects (namely in the framework of Erasmus+, Horizon etc.) related to its specific areas of specialisation.

One of its endeavours, is to create a 'National Producer Responsibility Scheme' for the collection and treatment of construction and demolition waste.

## Facemasks from Ashine Diamond Tools

Almost all countries are running out of hygienic and medical supplies due to the outbreak of Covid-19, with regular washing of hands being recommended as a way of helping to stop the spreading of the virus. The wearing of facemasks is also recommended but these are in short supply, with Sweden having sold out of these products some weeks ago, especially affecting hospitals and emergency

rooms. PDi Magazine's dear advertiser, Ashine Diamond Tools from Xiamen, China, contacted the magazine offering to send a package with over 200 facemasks. This life saving gesture from Ashine is very much appreciated. By supporting and helping each other, we are sure to beat the Corona virus. Thank you from the bottom of our hearts, Ashine.

**www.pdworld.com**

## Incorrect information

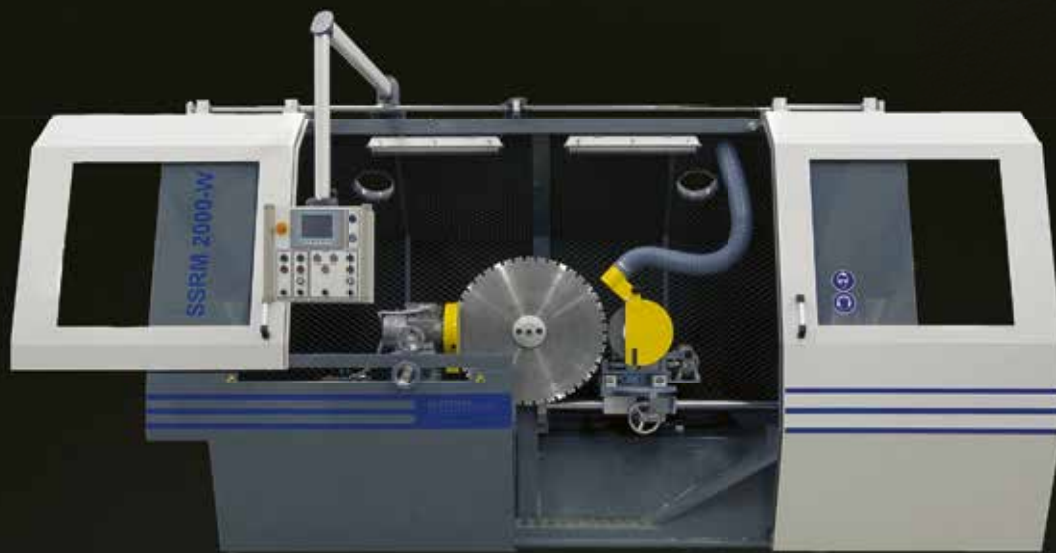
In PDi issue 1-2020, an article was published about the use of Brokk machines for demolition work at the Mumbai Metro. The article was published on pages 61-62. Unfortunately some incorrect figures were used. PDi wrote that the diameter of the metro tube is 8.5m; the correct figure should be 5.8m. Additionally PDi wrote

that the massive drill, cutting through the bedrock, is 8m in diameter. The correct diameter should be 6.5m. The contractor working in the metro was named as ITD Cementation in the article but the correct name of the contractor should be CEC-ITD Cem-TPL Joint Venture. We apologise for the mistakes which are now duly rectified.

# THE STAY SHARP SOLUTION



FOR YOUR  
HEAVY DIAMONDS



You want to do circular-grinding and side-dressing of saw blades and, if required, also angle-dressing of specific diamond tools in a most efficient way? By convenient semi-automatic and dry grinding operation? Suitable for diameters from 200 to 2000 mm and side-dressing up to 120 mm the **SSRM 2000** is the machine you need!

**PLATTNER**  
stands for high quality products in diamond business.  
We are producing wire saw equipment as well as machinery  
for working on diamond tools. Innovation, precision  
and flexibility always keep us one step ahead  
- since 1994!

WATCH THE VIDEO





# A battlefield report

***With the Covid-19 pandemic rewriting the rules of everyday life almost on a daily basis, news gets old very quickly. The world as we knew it seems to have ended, and we all have to deal with a new reality now. Demolition projects get suspended while construction equipment manufacturers convert their production lines to make ventilators for hospitals. That's a global war all over again, although this time every nation is fighting a common invisible enemy. Fortunately, even a war cannot stop human progress. PDi's Andrei Bushmarin reports on the latest developments in the excavator industry.***

## **The 352 UHD: a nimble "Cat burglar"**

The Cat 352 UHD ultra high demolition excavator is specifically designed for the demolition of tall structures. The UHD front can be switched for a straight or bent (retrofit) boom position for regular demolition and earthmoving applications. The conversion can be



performed by two personnel within 15 minutes, with no special tools required. The 352 UHD features a variable-gauge undercarriage and the Cat Active Stability Monitoring system, which continuously informs the operator of the tool's position. In the UHD configuration, the excavator has a vertical reach of 28m and a horizontal one of 15.8m when operating a 3.7t attachment. These parameters allow for efficient demolition of eight-/nine-storey buildings. Equipped with a longer stick and a 3.08m<sup>3</sup> bucket, the 352 UHD has a digging depth of 6,670mm and a maximum reach at ground level of 11,880mm. The machine is powered by a 408hp (304 kW) Cat C13 engine that meets the EU Stage V/U.S. EPA Tier 4 Final emissions standards. The C13 is also capable of operating on biodiesel up to B20. Three power modes permit the driver to match the excavator's performance to the task at hand. When using the retrofit boom, the 352 UHD can benefit from the Cat GRADE with 2D grade control system, swing e-fencing and the Cat Payload on-board weighing system. The payload system can be used with VisionLink (online telematics interface) to remotely manage production targets via the machine's Product Link (telematics system). The cab features a falling objects guard structure (FOGS) and includes front and roof laminated glass with a P5A impact rating. The cab can tilt up 30 degrees for optimum visibility. The windshield and roof glass come with one-piece parallel wipers with three intermittent settings with washer spray.

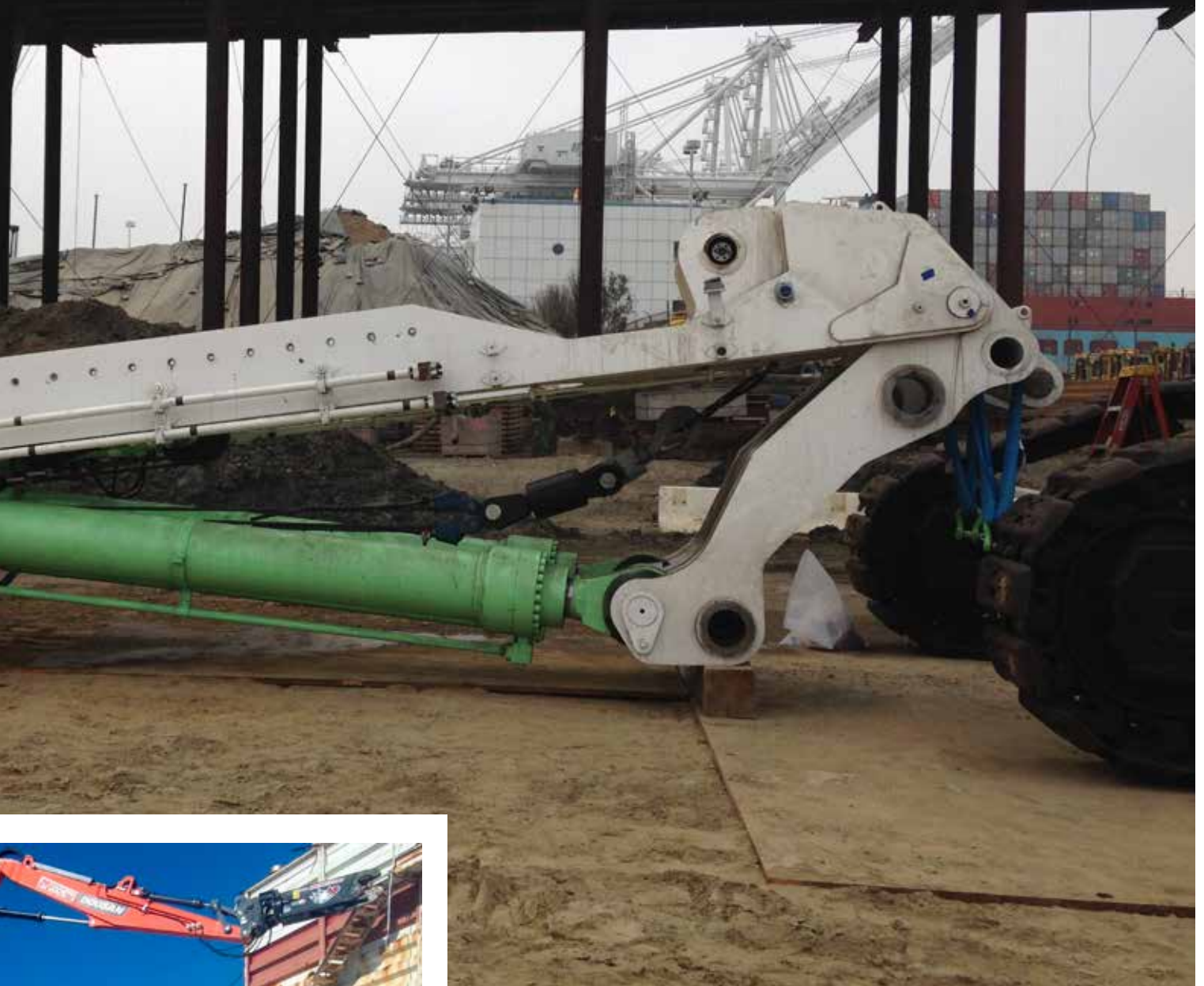
**[www.cat.com](http://www.cat.com)**

## **Doosan launches a new high flyer**

Doosan has launched the DX235DM - a precursor of the company's new range of high-reach demolition excavators (two more models will follow later this year). Offering a 30-degree tilting angle and excellent



# ON HEAVY HITTERS



visibility, the new machine is particularly suited to high-reach demolition tasks. The excavator's highlights are a modular boom design and hydraulic lock mechanism on the machine. This allows operators to use the machine for other applications as well as demolition. Thanks to the innovative design, switching between a demolition boom and an earthmoving boom is fast and simple. A special stand is provided to facilitate the boom changing operation. A cylinder-based system helps push the locking pins into place. The multi-boom design also allows the earthmoving boom to be mounted in two different ways. Equipped with a 18m demolition boom, the DX235DM reaches a maximum height of 16m whereas with the digging boom in the straight configuration the

DX235DM can work to a maximum height of 9m. The machine has a hydraulically adjustable undercarriage, which extends to a maximum width of 3.74m for excellent stability on demolition sites.

[www.eu.doosanequipment.com](http://www.eu.doosanequipment.com)

## Hyundai announces a 'game changer'

Hyundai Construction Equipment Europe (HCEE) is introducing the HX220AL - a new 22t Stage V-compliant crawler excavator. Described as a 'game changer', the HX220AL comes packed with cutting-edge functions and technologies. The Electric Positive Flow Control (EPFC) results in improved fuel efficiency and controllability. Auto Safety Lock prevents accidental start of the





excavator, which improves safety. Eco guidance indicates 'inefficient operation' status to prevent unnecessary fuel consumption. Machine Guidance/Machine Control (MG/MC) indicates the work status and controls the attachment. The MG displays the position of the bucket tip. The MC that controls the grading with the bucket tip features an automatic stop function. Engine Connected Diagnostics (ECD) aids after-sales technicians and dealers by generating diagnostic reports on the engine's performances. Machine Connected Diagnostics (MCD) enables the user to gather and analyse data on the machine's overall performance. Peter Sebold, Product Specialist at HCEE, comments on the new model: "The HX220AL kicks off the introduction of our new A-series – a range of excavators with intelligent features that cater to the current demand for smart and environmentally-friendly yet robust and productive machines."

[www.hyundai.eu](http://www.hyundai.eu)

#### Rusch is back with a bang!

Rusch – a Netherlands-based expert in crane boom repair and renowned excavator modifier – is back in the demolition game with its bespoke solutions. Rusch's lat-

est innovation was the RS 7500 'Quatro' machine built around a Hitachi 1900 excavator a few years ago. Ferma Corporation – a US-based specialist demolition contractor – supplied the base machine whose track lengths had been pre-modified according to Rusch's specifications. Following that the Rusch engineers designed the complete 'Quatro' boom with retrofit boom and subframe to fit the base machine. Originally intended for underwater

operation, the RS 7500 had a reach of 28m with a 15t tool and 20m with a 25t one. In the high-reach mode, this giant reached 42m and 32m with 15t and 25t attachment respectively. All boom sections fitted on a flat rack for easy and inexpensive transportation. The excavator's control system was also developed and installed by the Dutch company at the contractor's headquarters near San Francisco. The control system was interlocked with Rusch's in-house safety system that safeguarded the excavator against overturning. The customized machine's 'maiden project' involved the demolition of a bridge foundation in Los Angeles.

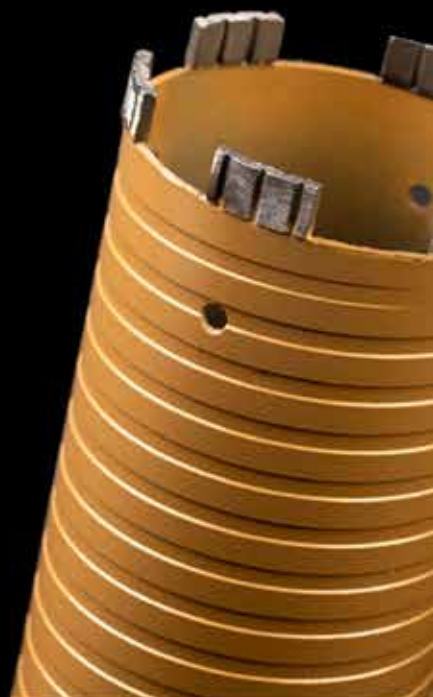
[www.ruschcranes.com](http://www.ruschcranes.com)





# HSD

*Diamond tool that matters*



HSD Europe GmbH Mergenthalerallee 77, 65760 Eschborn, Germany  
[www.hsdeu.com](http://www.hsdeu.com) [info@hsdeu.com](mailto:info@hsdeu.com) +49 (0) 6196 96790 0







### ATLAS sets a new standard in safety with its 1604ZWblue model

Germany-based ATLAS GmbH, a manufacturer of cranes and excavators with a century-long track record, has launched a new railroad excavator, which is said to set a new standard in the operator's safety and comfort. The new 1604ZWblue model boasts a redesigned rigid axle with automatic switchable axle locks (RADL) – a special feature that results in improved safety and operational flexibility. The excavator's rear axle can be fully locked utilizing an automatic differential lock system in the rail operation mode. When the rear axle is automatically locked by the switchable differential system, it is directly relieved of its load – which in turn means that the load distribution is balanced on both sides of the machine. The operational benefit is particularly evident when working "on transverse" tracks, because traction under load can be handled much more accurately and therefore with a much greater level of safety. In addition,

the new ATLAS railroad excavators can drive over larger track twists in friction drive operation without the excavator losing traction.

[www.atlasgmbh.com](http://www.atlasgmbh.com)

### German specialist contractor chooses SENNEBOGEN

When specialist demolition and recycling contractor Sauer Bau und Projektentwicklung GmbH, based in Starnberg, Germany, took delivery of a SENNEBOGEN 870 E excavator they based their choice on four main criteria. First off, the 117t machine has a reach of 20 to 33m when operating a demolition and sorting grapple. At the same time it is easy to control, which is essential when working in confined spaces. And, as of 2019, a version of the 870 E that reaches up to 36m is also available. Secondly, this model is a real multitasker when it comes to controlled demolition. It can dismantle sections of a building with a grapple, crush the removed material on the ground with a shear or a hammer, pre-sort it for the subsequent removal off the site. This is made possible thanks to the SENNEBOGEN optional quick-change system. Fuel efficiency and ease of assembly and transportation were Sauer Bau's third consideration. The 870 E offers up to 20% in fuel savings due to the automatic stop and idle functions and the seamless match of the engine and hydraulic system. A sophisticated self-assembly system, which enables the installation of the counterbalance and the boom without using an extra crane, enables transportation of the machine in only three parts. Thanks to the compact telescopic undercarriage, the excavator's main body easily



fits on a flat rack. Last but definitely not least is the occupational safety factor. "The safety of my employees is my top priority," says Sauer Bau's CEO Florian Trinkl. "We can confirm that the higher weight of the 870 E has a positive effect on its stability." In addition to stability, the excavator has other features that contribute to increased safety: a bulletproof windshield, the front and roof guards to protect from falling material, additional stick-mounted cameras for monitoring the work area and the 30° tiltable elevating cab. The machine comes with a pre-installed electronic monitoring system that prevents overturning.

[www.sennebogen.com](http://www.sennebogen.com)

# janser

Professional Flooring Technology

German Quality



Floor Scrapers to suit any application!



Ride-on ADB HS  
1180 kg

Ride-on ADB  
950 kg

Ride-on Electro  
656 kg



Power-Stripper  
14 kg



COSMO IV  
39 kg



MASTER MOBIL III  
105 kg



STRATO MOBIL IV  
190 kg



JUNIOR Ride-on  
420 kg

**Your projects - our equipment - your success!**

**Janser GmbH**

Böblinger Straße 91  
71139 Ehningen  
GERMANY

Tel. +49(0)7034-1270  
info@janser.com  
[www.janser.com](http://www.janser.com)



# A MASTERPIECE

# BEYOND TECHNOLOGY



**OPTIMIZED DIAMOND ARRAY WHERE WE WANT IT!**

ARIX technology allows optimized diamond particle array for the fastest speed and longest life



**SHINHAN  
DIAMOND**

Masterpiece  
beyond Technology

[cs.en@shinhandia.co.kr](mailto:cs.en@shinhandia.co.kr)

**HEAD OFFICE [Republic Of Korea]**  
 21635, 13AE-10, Namdong Industrial Park 375  
 Namdong-dong-ro, Namdong-gu, Incheon, Republic of Korea  
 T. +82-1600-4804 | F. +82-32-3614

**GERMANY**  
 Mengenthalerallee 79-81, 65760,  
 Eschborn, Germany  
 T. +49-6196-761-0777 | F. +49-6196-775-874

**USA**  
 SHINHAN DIAMOND AMERICA, INC.,  
 900 S. Ajax Ave. City of Industry, CA 91748 U.S.A  
 T. +1-626-363-9258 | F. +1-626-363-9259





## SWING LOADERS, SITE DUMPERS AND MORE FROM MECALAC

At this year's Conexpo/Conagg in Las Vegas, Mecalac presented its new AS swing loaders, TA site dumpers and excavators.

Urban construction sites are often congested; workspace is limited and ground conditions are often compromised. The Mecalac AS swing loaders introduced at the Las Vegas show are suitable for a variety of jobsites and feature an ability to simultaneously drive, operate and rotate. These loaders are designed around a one piece frame with three steering modes as standard (two wheel steering, four wheel steering and crab). With four wheel steering, combined with the 180° swivel arm, the swing can perform a complete rotation on a footprint that is 20% smaller than that of a conventional loader, according to Mecalac. Whatever is lifted by the bucket at the front, once the rear axle is locked, can be turned through 180°. Whether moving on site, between locations or during active loading operations, it maintains its mobility.

Also introduced at Conexpo/Conagg was the TA dumper series which has been specifically designed to meet the tough demands of new construction sites. To ensure safety, Mecalac has developed technology for the safety of the operator and those working around the machine. The so called 'Shield' technology is fitted as standard on all dumpers from 6t to 9t (Stage V), with the option to upgrade to 'Shield Pro'. Standard Shield includes start and drive interlock to

ensure the operator is wearing the seatbelt before driving. Stop-start and idle shut off features make sure the machine is not left running for longer than required. Shield Pro includes features such as skip operation interlocks, safe working angle monitoring and adjustable speed limiting.

Entering and exiting the machine is safe due to the stair like access with full length grab rails. All site dumpers feature service access from ground level to ensure routine equipment maintenance. The chassis and engine canopies are designed to give access to all service areas, while engine panels are mounted on heavy duty, lockable hinges for added safety. A hazard detection system is designed to detect objects in front of the working machine which the operator may have missed.

Mecalac 'Power Swivel' site dumpers allow any load to be rotated before being tipped, with the Power Swivel technology enables the operator to work within a confined site area, with payload options ranging between 2t to 9t. Mecalac 'High Discharge' site dumpers are designed to deliver versatility and performance dealing with payloads from 1t to 2t. Each model has been developed for use in smaller sites, such as housing developments and landscaping projects, with all models delivering a height clearance of over 1.5m. An articulated and oscillating chassis ensures excellent manoeuvrability and off road capability.

Mecalac's R&D department has developed its 6t and 9t dumpers by imagining a cab that 'changes everything'. The redesigned access system for the MDX site dumpers features large self-clearing steps set like a staircase. The solid back plate significantly reduces the risk of material build up on the steps. With a full length hand rail located on the 'A-pillar' and a door mounted hand rail, three points of contact can be easily maintained when accessing the cab. The new 6MDX and 9MDX combines aesthetics with operator functionality. Integration of the cab within the ground up design enhances visibility, safety, simplicity and ease of operation. Other new developments include their new MCR and MWR excavator series.

From just one dealer in 2016, Mecalac North America now has 15 dealers and is still growing. With direct lines of communication back to the factories in Europe, this wholly owned subsidiary of the Mecalac Group has a singular focus: bringing the company's thinking and products to new markets across North America. "From Florida to Washington State, and Montreal and Missouri, we have partnered with a variety of well-established equipment houses who recognise the unique attributes of our machines and see opportunity in helping us bring the Mecalac message to the market," says Peter Bigwood, general manager, Mecalac North America.

The series, "Brokkology," features Brokk owners and operators from across North America sharing their challenges and triumphs in various remote-controlled demolition applications. "Brokkology is the study of Brokk — the machines, the company, the culture that has arisen around this unique product, told not by our team, but by the men and women in the field who are using our equipment to revolutionize demolition applications," said Mike Martin, VP at Brokk Inc. "These operators have defined the use of Brokk machines in North America, and through

this series are able to share their insight, innovations and ideas with others, like how to approach and manage projects or ways to break into a new applications and markets using robotic demolition."

The hour-long podcasts are available twice a month and feature a one-on-one conversation between "Brokkologists" and Martin. Each delves into the guest's experience in the demolition industry and what it was that attracted them to Brokk. The interviews also cover how robotic demolition has revolutionized each guest's operation, either on a particular job or overall by integrating the equipment

into their everyday process. The "Brokkologists" outline challenges they've encountered and the innovative solutions that allowed them to find success time and again. The resulting interviews provide guidance, encouragement and entertainment for other Brokk operators looking to capitalize on their equipment investment.

"During my 29 years with Brokk, I've come into contact with a number of contractors who have taken our machines above and beyond anything I could have imagined, truly revolutionizing their applications," Martin said. "These are the true leaders of our industry, innovators and entrepreneurs and they are a valuable resource for other Brokk operators looking to improve performance or equipment utilization. I believe sharing their experiences will help the next generation of Brokk owners and operators better integrate this innovative technology into their operation to expand markets, increase safety and maximize profitability."

For more information on Brokkology, visit the podcast website, [www.brokkology.com](http://www.brokkology.com) and any questions can be emailed to [brokkology@gmail.com](mailto:brokkology@gmail.com)

## TOP OF THE LINE DEMOLITION EQUIPMENT



**Green Attachments Oy**  
Heinolan Vanhatie 25  
15170 Lahti, Finland  
Phone: +358 45 697 1644  
bp@greenattachments.com

[www.greenattachments.com](http://www.greenattachments.com)



Developed by Italmek in Lombardy, Northern Italy, the iRC35 rail cutter has been designed for professional use heavy duty use. It is built to last and tough enough to master the breaking of large rails on a daily basis. "Six years ago, we decided to put our 60 years of steel shear design and manufacturing at use for the need of our best customers. The time had come to finally develop our first rail cutter. Our goal was build it to last longer than any other rail cutter and build it to perform like no other product on the market," says Marco Bodei, managing director of Italmek.

"It was time to innovate a product, which has long been offered by competitors far from satisfactory to the needs of users. We put into practice a different concept that leads to 'effective strength' which makes our cutter far superior to the other products available in the market. Its toughness is due to the combination of a structure wholly made out of Hardox and Strenx," adds Marco.

All steel types used in the manufacture of the rail cutter are applied in impressive thicknesses, together with some technical solutions that allow the significant reduction of any shock the attachment undergoes during the rail cutting/breaking process. "When an experienced user sees the iRC35 for the first time, the first impression gained is that of a solid and massive appearance; that is what is heard from the rail cutter users. As soon as he (the operator) sees it in action, he is impressed by the ease the iRC35 is breaking the rails," says Marco.

Additionally, upon breaking, the fragments simply fall onto the ground. This means that they are not dangerously 'blown away' in all directions. At the same time the typical 'deafening' noise of a metallic explosion is replaced by a dull noise that can be heard only from close range. "It becomes

immediately evident that this new cutter has a great and long working life ahead of it. It seems credible, also for the intensive use requested by industrial work. The feed-back from eye witnesses at various testing yards confirms the overall outstanding performance. This rail cutter positively surprised high skilled and experienced operators around Europe," said Marco. "The great working speed is accompanied by a high effectiveness in breaking, even when dealing with larger rails; each time you close its mouth, it makes a cut and does not transmit any noise or vibration in the cabin."

The latter feature is very important for those who care about the well-being of their operators, but also care about the proper functioning of their excavator, which was another important design feature from the outset. This was achieved thanks to a combination of factors, not least the development of a special regenerative valve with a much higher multiplication factor than standard being equipped with devices that absorb hydraulic kickbacks.

Italmek reports that the entire project and the resulting iRC35 have been very successfully received. There are now several iRC35 rail cutters that have been working for at least three years (real working time, cumulative, recorded) without reporting any structural issues, and have been subject to scheduled maintenance only. The equipment is duly surveyed and the data collection is continuously updated. On average, the iRC35's have been cutting 60-65kg/m rails (60E, 136RE, R65, AS68), in pieces of 1.5m in length, working nine to ten hours each day, five days per week, which means that the iRC35 can cut from 2,300t to 2,600t in a month. The Italmek iRC35 rail cutter can cut railway train rails of all dimensions, and weighs approximately 3.4t without an adapter plate.

[www.italmek.com](http://www.italmek.com)



## Husqvarna introduces the DM 400 / DM 430 drill motors

For contractors looking for a durable drill motor that doesn't compromise on performance, Husqvarna has introduced the new DM 400 and DM 430 single phase 3.2kW electric drill motors. They combine typical Husqvarna usability features with a new level of sturdiness and are also the first Husqvarna drill motors to be equipped with 'Embedded Connectivity'.

"The new DM 400/DM 430 are designed for rough handling and heavy drilling jobs," says Håkan Pinzani, global product manager for core drilling systems at Husqvarna. "But, they're also very easy to handle in any drilling conditions you can think of. Truly dependable workhorses built to make the operator proud."

The drills come with typical Husqvarna features such as a LED load indicator and the 'SmartStart' (half speed) button, as well as a quick connection to the new Husqvarna DS 500 stand, which is designed to fit perfectly with the DM 400/DM 430. The three speed gearbox makes it easy to adjust rpm for core bit diameters ranging from 55mm to 350mm for the DM 400, and 100mm to 450mm for the DM 430.

Inside the casing, the air cooled heavy duty electric motor is built to a tried and tested design, proven to withstand high loads without overheating. The long life carbon brushes are easy to inspect and replace. To

protect the motor and gearbox in case the drill bit gets stuck, the Husqvarna DM 400/DM 430 are equipped with two independent systems: a mechanical friction clutch and the Husqvarna 'Elgard' electronic motor overload protection.

Husqvarna DM 400/DM 430 are also equipped with 'Embedded Connectivity', which is an enhanced

version of Husqvarna 'Fleet Services'. It harvests and presents data analytics and insights into the health of the Husqvarna equipment, including key performance alerts. This technology allows continuous wireless updates of the machine's software to keep it as smart and modern as possible. The DM 400/DM 430 will be available to order from February 2020.



## Bobcat shows innovations at Conexpo/Conagg 2020

On the Bobcat booth in the Las Vegas Convention Center, a specially designed stage spotlighted the latest news and insights about Bobcat's new products, innovations and vision for the future. One of the highlights was a trio of electric concept machines: the E17e, an electric/hydraulic excavator; the S70e, an electric/hydraulic loader and the T76e, an all-electric loader.

Bobcat electric prototype machines are aimed at the indoor demolition market. With zero emissions and a durable lithium ion battery, they will work just as hard as diesel models with fewer maintenance needs. The fully electric concept machines have the potential to completely revolutionise the compact equipment industry, with Bobcat planning to be the first to engineer an all-electric loader. Alongside the concept machines, new products shown included the R-series loaders which are set to be launched in Europe

later this year. All R-Series loaders feature new cast steel loader arms and a redesigned cooling package in response to demand for higher capacity cooling.

Another Bobcat development at Conexpo/Conagg was the Bobcat 'MaxControl' system, which provides a new IOS (Apple) based plug and play remote control solution that uses a smartphone to control Bobcat loaders. With its similarity to gaming joysticks or an Xbox controller, MaxControl ensures operators have a tactile feel when remotely operating Bobcat loaders.

The Bobcat stand provided a demonstration of the company's ambition with a wide range of new products and pioneering technologies. These are currently only available for the USA market, but might be coming to the EMEA market in the near future. Amongst those shown at the Las Vegas show were small articulated loaders, R series 4t -6t mini excavators, E145 and E165 excavators and IQ wireless communications.



## DOOSAN DX800LC-7 CRAWLER EXCAVATOR

The new Tier 4-compliant Doosan DX800LC-7 crawler excavator was shown for the first time in North America at Conexpo/Conagg. It is the biggest model in the company's excavator line up, and is scheduled to be available in North America in late 2020.

The DX800LC-7 excavator is the largest Doosan model ever available in the United States and Canada. It is primarily intended to serve customers in mining applications, removing overburden and loading large amounts of material into articulated dump trucks or rigid frame trucks. The DX800LC-7 may also be operated on very large construction projects, such as infrastructure jobsites, where a massive amount of material needs to be excavated and stockpiled or loaded onto trucks to be moved. A removable counterweight is available as an option and is ideal when the machine needs to be transported between sites.

With this extension of its excavator line, Doosan offers machines from 3.5t to 80t to serve a wide spectrum of customer needs and applications in construction, mining, landscaping, recycling and forestry.

Additional information will be distributed when the machine is available in North America.

# CONTROL DUST

WITH THE FIRST PATENTED  
WATER SPRAYING INTEGRATED  
TECHNOLOGY

# NO WATER WASTE

SPRAY JUST RIGHT  
WHERE YOU NEED IT  
WHEN YOU NEED IT!

# ARDEN **JET**

5 TIMES  
INTERNATIONALLY  
AWARDED



Visit [www.arden-equipment.com](http://www.arden-equipment.com)





## PREMIERE OF NEW DEMOLITION AND QUARRYING ALLU CRUSHER IN LAS VEGAS

Allu, the manufacturer of the Transformer and Processor ranges of material handling attachments, has introduced its latest development: the new Allu Crusher, which received its global launch at Conexpo/Conagg in Las Vegas. This new heavy duty range of Allu crushing attachments is purpose designed to meet the requirements of the demolition, recycling and quarrying industries.

The global launch of the new Allu Crusher series will initially see three models be introduced for excavators in the 10t to 33t range. All have purpose developed features that ease their use and optimise performance,

whilst providing easy maintenance in the field. Jeroen Hinnen, vice president of sales for Allu Group says of Allu's latest development: "By bringing this new product line to market we will be able to provide customers with what they have been looking for. The Allu Transformer range offers unique productivity and efficiency benefits on soft rock and other materials, whilst the Allu Crusher range enables hard rock, and often troublesome demolition materials, to be effectively reduced. We look forward to seeing this truly customer focused solution reach the market which will further help quarrying and

demolition professionals transform their business. The product will complement the Allu offering and expand the customer base for the company."

### Transforming the way you work

As well as giving the new Allu Crusher its premiere at Conexpo/Conagg, Allu also showed the latest developments from its Transformer and Processor series, which provide a business focus based on 'Transforming the way you work'. This essentially translates into efficiency through the solution being a one stop shop process enabling the screening, crushing, aerating, mixing and loading all in a one-step operation. This also enables the transforming of profitability as less material goes to landfill resulting in less expenditure in haulage costs and landfill fees. Available in sizes to suit excavators and loaders from 8t to 160t, the Transformers facilitate the re-use of material on site, meaning that there is no need to purchase virgin material due to the recycling and utilisation of left over materials and the generation of an income from it.

Also exhibited was the Allu Processor which is a power mixer attachment which converts any excavator into a powerful and versatile mixing tool capable of penetrating and effectively mixing a variety of difficult materials. Materials suited for the attachment range from clay, silt, peat, sludge and sediment, to dredged material and contaminated soil. Fitted to, and powered by the excavator's hydraulic system, and benefitting from its ability to reach difficult or soft areas, the Processor (also available in various sizes and capacities to meet customer requirements) is able to mix materials everywhere the excavator goes. This means that binders or chemical agents can be delivered to the area of the highest mixing shear by an attached 80mm diameter pipe and injected via a nozzle located between the mixing drums.

### TS blade structure

All the Allu Transformer's exhibited were equipped with the patented and unique TS blade structure which has been developed by Allu. The TS blades are a modern development for the screener / crusher market, aimed at delivering new levels of efficiency and productivity with the new blade variations. This new blade structure also will further enable customers to utilise their Allu Transformer in more than one way. The TS drums are available with two different blade types: standard blades for screening applications and axe blades when a crushing or shredding effect is required. Blade sizes available include 16-32mm, 25-50mm and 35mm.

## Introducing the new Tyrolit WCE18 wire saw

The WCE18 sees the introduction of the newest member of the Tyrolit wire saw family. The electric saw comes with extra-large wire storage of 15m and a powerful 18kW high frequency drive. It is perfectly suited for demanding jobs and the controlled demolition of larger structures, such as bridges, chimneys, or foundations.

The saw comes with such features as infinitely variable cutting speeds from 0-25m/s, smoothly adjustable wire tension, wire storage of 15m and an overall wire length of 19m. It has a high initial torque and an

almost slip free power transmission thanks to its large drive wheel (Ø 445mm). There is less wear of the main components due to reduced load of the wire storage, a clear, user friendly control board and a water cooled high frequency motor (18kW). The WCE18 measures 1,170mm x 1,810mm x 760 mm and weighs 354kg.






# The Best Grinders for Hazardous Materials!

The BG5 and BG125 high frequency concrete grinders are uniquely qualified equipment for the most demanding contaminated surface removal operations such as nuclear power plants. With IP55 protection, the machine can be thoroughly cleaned, meaning easier post-job cleanup, making more effective and organized decontamination operation.



Grinder	BG125	BG5
Power input	3~2000W	3~2200W
Wheel Diameter	125 mm ( 5" )	125 mm ( 5" )
Weight	4.6 kg ( 10.1 Lbs )	5.1 kg ( 11.3 Lbs )
Converter	P4K	
Voltage	100V~240V ~50-60Hz	
Max. Power Input	1~4500W	
Max. Power Output	3~4000W	
Weight	3.1 kg ( 6.9 Lbs )	
Protection	IP 55	



## Advantages

- ✓ Close to 90% Motor Efficiency
- ✓ 7 Variable Speeds
- ✓ Perfect Dust Extraction
- ✓ Multi-feature Converter



## IP55 Protection

Hazardous substance stuck on the machine can be thoroughly cleaned away.



## GSSI showcases its leading GPR systems at Conexpo/Conagg

GSSI, the leading manufacturer of ground penetrating radar (GPR) equipment, exhibited its latest developments for the transportation market and systems for the utility and concrete markets at the Las Vegas show in March. These included 'PaveScan RDM 2.0', 'StructureScan Mini XT' and 'UtilityScan'.

GSSI's PaveScan RDM 2.0, an asphalt density assessment tool, provides accurate real time measurements to ensure pavement life and quality. PaveScan 2.0 incorporates a new sensor design built specifically for the extremes of the asphalt paving environment, foldable deployment arms with high visibility for work site safety and has a warm up time of under one minute. PaveScan RDM is ideal for uncovering problems that occur during the paving process, including poor uniformity and significant variations in density. By avoiding these problems, PaveScan RDM helps avoid such premature failures as road raveling, cracking, and deterioration along joints.

Visitors to the GSSI booth at Conexpo/Conagg were also able to see the StructureScan Mini XT 'all in one' concrete inspection GPR system. This is ideal for locating rebar, conduits, post tension cables and voids. It can help identify structural elements, including pan decking and concrete cover whilst also providing real time determination of concrete slab thickness. Along with the Mini XT, the 'Palm XT Antenna' was at the show. This is a miniaturised GPR antenna that is designed to greatly enhance the capabilities of the StructureScan Mini XT. The handheld Palm XT antenna turns a basic Mini XT into an advanced system by giving users unparalleled access in tightly spaced areas and enabling overhead scanning.

For the utility market, GSSI displayed the UtilityScan. This GPR system is compact in size making it extremely portable and easy to manoeuvre in tight survey areas. With a robust new wireless antenna that can handle required data rates, UtilityScan is ruggedly built to withstand challenging field conditions. The electrical design uses GSSI's patented 'HyperStacking' technology, which has proven to increase depth penetration in challenging soils, whilst also providing high near surface data resolution. UtilityScan has a backup Ethernet connection if Wi-Fi is not allowed or desired on site.



## Built for high reach demolition tasks

The Cat 352 UHD ultra high demolition excavator is designed to handle the difficult demolition of tall structures using a range of Cat demolition attachments, including multi processors, grapples, shears and hydraulic hammers with the retrofit boom. The UHD front can be switched for a straight or bent (retrofit) boom position for lower level demolition and earthmoving applications. This switch typically is done in about 15min with two people with no special tool required. The 352 UHD features a variable gauge undercarriage (hydraulically activated), as well as the Cat 'Active Stability Monitoring system', which continuously informs the operator of work tool position within a safe working range and warns when approaching stability limits.

### Working parameters

In the UHD configuration, the 352 UHD provides 28m of vertical height to the work tool attachment pin, and 15.8m of horizontal reach when working with a 3.7t tool. These ample specifications allow the 352 UHD to demolish structures eight or nine stories high fast, with precision and control thanks to the electro hydraulic control system. The undercarriage gauge is 4m for optimum stability when working, and 3m for transport with 600mm track shoes.

The 352 models use the Cat C13 engine, rated at 304kW, which meets EU Stage V/U.S. EPA Tier 4 Final emissions standards. The C13 also is capable of operating on biodiesel up to B20. Three power modes in the machine allow the operator to match machine performance to the task at hand and a new high efficiency, hydraulic, reversing fan cools the engine on demand to help reduce fuel consumption. When using a retrofit boom, the machine can use the Cat 'Grade' with 2D grade control system, swing e.fencing and the Cat 'Payload' on board weighing system. The latter can be used with 'VisionLink' (online telematics interface) to remotely manage production targets via the machine's 'Product Link' (telematics system).

The Cat demolition cab features a falling objects guard structure (FOGS) and includes front and roof

laminated glass with a P5A impact rating. The cabs tilt up 300° providing optimum line of sight to the work tool and a more productive, more comfortable working position for the operator. The windshield and roof glass feature one piece, parallel wipers with three intermittent settings with washer spray. A premium seat, heated and cooled, is standard. Rear view and right hand side view standard cameras provide clear images on the monitor.

The left console tilts up for easy cab entry and exit; advanced viscous mounts reduce cab vibration up to 50% when compared with previous excavator models, with controls being easily accessed. UHD models are equipped to accept a work tool camera, which can be installed by the Cat dealer with a kit. Standard radio has USB ports and Bluetooth technology to connect personal devices and to make hands free calls.

In the cab, each joystick button can be programmed, including power mode, response and pattern with these settings being recalled using appropriate operator identification. An automatic hydraulic oil warmup feature quickly brings the system to operating temperature and helps prolong component life. A high resolution 254mm touchscreen monitor allows fast navigation, including operating and maintenance tutorials.

### Maintenance simplified

Extended service intervals help reduce maintenance costs, whilst ground level hydraulic oil checks and fuel system water drains speed routine service. Filter life and maintenance intervals can be tracked via the in cab monitor. All fuel filters can be changed at a synchronized 1,000h and oil and fuel filters are grouped on the right hand side of the machine for easy access. The engine air intake filter with pre cleaner has double the dust holding capacity of the previous filter, and the hydraulic oil filter provides improved filtration performance, and anti-drain valves to keep oil clean when the filter is replaced at a 3,000h interval. Oil sampling ports further simplify maintenance and allow for easy extraction of fluid samples.

# Pentruder

## RS2



### A SMALL WALL SAW WITH LARGE CAPACITY

#### Quick disconnect coupling for blade

Easy fitting of blade

#### Only one connector

Simple to connect and disconnect

#### Light weight, easy to fit blade guard

Best protection and handling

#### Revolutionary one-of-a-kind integrated motor

Very high system efficiency means more power to the saw blade

#### Pentpak 3 drives a range of HFi products

Modular system with significantly lower machine weight

#### Same track system as all other Pentruder machines

Highest stability and best handling

#### Designed with the customer in mind

Less components

Very easy oil change

Efficient slip clutches for all motors

Brushless feed motors





NEW MOBILE CRUSHING, SCREENING

# and shredding equipment

***New slow speed shredders, jaw and cone crushers, are some of the latest additions in the world of mobile material processing units for recycling .PDi takes a look at the latest machines on the market as well as highlighting some case stories of their use.***

**D**oppstadt has launched two new slow speed shredders, the 'Inventhor Type 6' and 'Methor'. The Inventhor has been optimised for economic efficiency, ease of use, accessibility and minimal downtime. Its 'VarioDirect Drive' forms the core technology that combines high throughput, low fuel consumption and optimum start up performance even with difficult shredding jobs. The shredder is able to handle a range of pre shredding applications thanks to its configurable shredding system. It can be used combined with other machines enabling the inline generation of a finished product.

The Methor has been redesigned and offers flexibility when handling smaller volume flows being based on a new approach for Doppstadt, as it leverages for the first time the advantages of Doppstadt technology for smaller volume flows, mono batches or special materials and is geared to maximum flexibility. The shredding system can be switched over within 60min, thus, it is designed for jobs with smaller volumes of materials or frequently changing tasks. It can be combined as part of more complex systems with other 'Smart Solutions' from Doppstadt. The drive system also reacts to blockages so that the machine protects itself. The internal components are cooled thanks to large ventilation openings. The machine is powered using diesel engine technology, but the line will be expanded to include an electric drive option. Based on the range of applications, the Methor is available as a stationary version as well as a mobile version for use with hook lift or on a track mounted chassis. The Methor can be configured and monitored via Wi-Fi to a smartphone, laptop or tablet that is internet enabled and has a browser installed, regardless of operating system.

## Hybrid technology from Rubble Master

RM has introduced a new fully electric hybrid screen, RM MSC8500e, which was developed on the basis of

the tried and tested RM MSC8500M screen unit. All the hydraulic drives have been replaced with electric ones, with only the crawler gear remaining hydraulic. One customer that has used the hybrid technology is Manfred Schrefler, founder and director of the company Manfred Schrefler GmbH. Since the spring of 2019, he has owned a RM 100GO! with hybrid drive. The crusher can be used for processing material both with diesel operation and electrically. Depending on the application, he combines the mobile impact crusher with the RM HS5000M pre-screen or uses the crusher on its own. With system, Schrefler can process concrete, asphalt and C&D waste as well as natural stone, gravel and excavated material. "When we crush using electric power, we manage even lower noise levels, which gives us a great advantage on inner city construction sites," says Schrefler. "With regard to emission regulations, with the RM 100GO! Hybrid and its Tier 4f/ Stage IV engine we are among the best. Also, even though the new RM crusher is really great with its low fuel consumption, when I think about how diesel prices are developing

compared to electricity, I can recycle more cheaply with an electric powered hybrid crusher."

## Low speed single shaft shredder 'Terminator' from Komptech

With the Terminator, Komptech offers a machine for defined pre shredding of waste for recycling or thermal reclamation. With this new addition to the Terminator family, the Type V, Komptech have aspired to create a tough, stoppage free and well-designed shredder. The 'V' stands for 'versatile' in terms of material and range of applications. The focus during development was on users who need to process many different materials, such as household or commercial waste, biomass, or used wood. The Terminator Type V is a line extension, i.e. a new version of the existing U, F, and XXF shredders. The modular idea played a major role in the development and the ability to replace all major components was designed in from the beginning. Komptech integrated all future variants in the basic layout, which is meant to ensure flexibility since by putting together the right components they can set up a machine for the customer's requirements. For the first time an optional re-shredding unit under the drum is available, expanding the range of grain sizes.

The Terminator is suitable for waste wood, mixed construction waste, household or bulky waste, commercial waste, tyres or special applications like white goods or electronics waste, to name but a few. It generates the grain size range suited for subsequent processing. With three different shredding units (U, F and XXF) it can do everything from coarse pre shredding to reducing materials to a defined particle size. The grain size is set by adjusting the cutting gap between the counter comb and the drum. This cutting gap remains constant during shredding for consistent output. The large drum diameter prevents wraparounds from tapes, belts and wires. The drum also has an automatic reversing function that acts as an overload protection, as well as performing





**The new shredder can deal with a range of materials like household and commercial waste, green cuttings and waste wood. Photo: Komptech**

self-cleaning. With the wide, high output channel and its conveyor system, shredded material is discharged without blockages.

#### **Jaw crusher from EvoQuip, cone module from Terex**

EvoQuip has introduced a new hybrid hook lift jaw crusher, the EvoQuip 'Bison 160'. Suited to hard rock as well as construction and demolition recycling applications, the Bison 160 Hybrid is the fourth model in the Bison series and the first to utilise hybrid diesel electric drive technology to reduce running costs in addition to cutting noise and fuel emissions, making it ideal for urban areas. The dual powered Bison 160 is equipped with a 700mm x 500mm single toggle hydraulically adjustable jaw crusher. The electric drive allows customers to reverse the crusher to clear a blockage or run in reverse for asphalt recycling. An optional deflector plate is fitted on the moving jaw providing belt protection by

allowing uncrushable objects to pass through the crushing chamber and onto the discharge belt.

The jaw crusher is suited for working in space restricted sites. EvoQuip has aimed at creating a compact crusher that is easy to transport and operate, and quick to set up. It is ideal for recycling with under crusher clearance, minimal snag points and a short distance between the crusher discharge conveyor and magnet. The over band magnet removes rebar which can be discharged to the right or left of the machine depending on site configuration. Additionally, it includes a heavy duty vibrating grizzly feeder. The intelligent control system is based on power draw and feed level to ensure material flow in the jaw and throughput. The aim of the design is to make a machine small enough to fit inside a standard high cube container, but tough enough to withstand challenging applications.

Following the recent launch of the new Terex MPS TG/TGS Series bushing cone crushers, Terex has



introduced the MC320 cone module. The MC320 features the TG320 or optional TGS320 cone on the same universal base structure as the MC and MV series modular lines. The all electric, pre-engineered solution can be transported in standard containers and can be bolted together onsite quickly with basic tools and minimal wiring enabling installation with or without full concrete foundations. The TG320 is a 225kW bushing cone with large feed opening, adjustable eccentric throw and multiple liners, with the 1800/1500rpm motor and crusher being mounted on a rubber isolated frame. The galvanised/painted steel structure includes oversize walkways, repositionable stairs and guard rails. Four plant emergency stops are placed around the platform. The MC320 comes with standard AIC crusher controls. Additional options include an overflow chute and off plant conveyor starter kit.

## **Haas waste wood plant in operation since 2004**

The recycling company Van Vliet, part of Renewi, has been active in waste processing in the Central Netherlands region for more than 100 years, with the company also processing waste into semi-finished products and green waste into compost. In 2003, Renewi (then named the Van Vliet Groep) hired Haas to design a new waste wood plant, the largest project for Haas at the time. Over a period of several

weeks, numerous planning discussions were held. The challenge was to design a plant that would be able to process 70t to 80t of waste wood (unsorted waste and demolition wood) per hour, as well as separate ferrous and non-ferrous metals and carry out exact screening of individual chip sizes according to customer specifications. The end product would be wood chips for biomass plants and high quality chips for the chipboard industry.

The solution delivered was a Haas waste wood processing plant with primary and secondary shredders with a capacity of up to 80t of waste wood per hour. The plant contains five round silos for intermediate storage of the recycling chips until loading by truck or ship loading system. The total size of the plant is approximately 2,000m<sup>2</sup>. In 2003, the originally installed horizontal hammermill, type HSZ 2000, was replaced after thousands of operating hours by a new vertical fed hammermill, type 'Arthos 2000' and is still running. In 2018, more than 170,000t per year had been processed. "We are very satisfied that we have chosen Haas," says Johan Peter

Post, operations manager at Renewi. "We are convinced of the good consultancy and the entire management and service team of Haas, supporting us at any time, solving any problems and assisting us in any possible way. Maintenance intervals and regular service visits are planned well in advance and the spare and wear parts are manufactured in time, and stored at Haas or at our warehouse. There are no downtimes for longer periods of time and the entire plant still has a very high availability until this day. We have maintained a good partnership with Haas right from the start, which means that communication has never been a problem and mutual trust has built up. I would again implement a new plant project with Volker Haas and his team today."





# Durable Performance

Increase the capabilities of your concrete cutting and demolition toolbox. Operate a full range of Pentruder High Frequency equipment simply by connecting the same Pentpak, remote control, motor, and cables to a wall saw, a wire saw or a heavy duty core drill.

All Pentruder equipment is Made in Sweden. We produce precision parts in-house, from the best materials, in state of the art production machines. With over 35 years of experience from designing concrete cutting equipment, we know how to build high performance, durable systems.

Visit our website for more information & contact details to our distributors:  
[www.pentruder.com](http://www.pentruder.com)

Or check out our facebook page: [www.facebook.com/pentruder](https://www.facebook.com/pentruder)  
or Instagram: [pentruder\\_official](https://www.instagram.com/pentruder_official)

**Pentruder®**  
**CONCRETE CUTTING SYSTEMS**

Designed and manufactured by:  
Tractive AB | Gjutargatan 54 | 78170 Borlänge | Sweden  
Tel: +46 (0)243 221155 | E-mail: [contact@pentruder.com](mailto:contact@pentruder.com)  
[www.pentruder.com](http://www.pentruder.com)







### New RC150 RubbleCrusher from CMB International

UK-based manufacturer CMB International releases their updated RC150 RubbleCrusher. It can efficiently work from a trailer or placed on a stationary skid. The typical capacity is 180-300t per day, based on an eight-hour day, and 20-40t/h depending on feed grading and output setting. In their own words, it is easily towable by 4x4 as it weighs under 3,500kg and can be set up in less than 5 minutes. It is loaded with a 5-8t excavator

or backhoe loader. The jaw crusher is 650mm x 350mm with a maximum recommended feed size of up to 520mm x 280mm. The adjustable output size is 0-25 to 0-200mm. It can crush concrete, brick and stone up to 210kN. The updated version will feature hydraulic drive with a reverse function and a Tier 5 Yanmar engine for applicable markets. The overall dimensions of the skid are 1200mm width x 4570mm length, while the trailer's dimensions are 1550mm width x 4900mm length x 270mm height, with conveyor folded for transport.



### Rockster's hydrostatic drive a key factor for recycling specialist

Forster Recycling has developed into an industry specialist with 27 employees. The German recycling company has been focused on processing contaminated soil, gravel, stone, litter, construction rubble and waste from sewer cleaning. The company has three landfills and a thermal processing plant, which transforms contaminated rock or debris into recyclable material. Forster's customers include road construction companies, municipalities, district and water management offices and the German National Railways.

Richard Forster and his company have been using mobile crushers for quite some time; however they have always been rented. This led him to look for a mobile crusher of his own in the 35t range and tested a few, including the Rockster impact crusher R1100DS with screening system and Cat C9 Stage V engine. "The large openings and good access to the engine compartment make service and maintenance easier," says Forster. "We also have much better experiences with hydraulic drives, as is the case with Rockster's fully hydraulic drive, in comparison with diesel electric drives, where you have to expect cable breaks and which are usually more sensitive to dust or vibrations." Since the crusher is used on multiple locations, i.e. the recycling site and at the company's own gravel quarry or landfills, transport was an important issue. "I like the fact that we don't have to disassemble anything on the R1100DS to transport it, just fold in the screening system and drive it onto the flat-bed trailer," explains Forster.

Forster often produces 0-60mm material for underground stabilisation from broken concrete or mixed rubble. The granite gravel from railroads is processed to a 0-16mm or 0-32mm end product, suited for road construction as an underfill or for land consolidation. "Performance and material quality are really excellent, the composition of fine and coarse fraction is exactly right for our customer requirements," says Forster. "The attached air blower also works perfectly. It has the optimal suction to blow away non aggregate materials such as polystyrene, textiles, wood parts or plastic. This light material is collected directly in a container, which is surrounded by a net, and can then be disposed of. So, everything is done in one step."



**CK Abbruch & Erdbau has been using a MR 130 Z EVO2 impact crushing plant to crush rubble from a demolished department store. Additionally, a Mobirex MR 110 Z EVO2 is being used by Leeds, UK, based Mone Brothers.**

Established in 2003, CK Abbruch & Erdbau engages primarily in demolition and earthworks. The company processes some 250,000t of recycled feed material annually. Recently, it was hired to take down a shopping centre in central Göppingen, Germany, and process the material on site. In applications of this kind, the company uses the mobile Mobirex MR 130 Z EVO2 impact crushing plant. The company fleet also includes a Mobiscreen MS 13 Z screening plant, mostly used to screen rubble and soil. Markus Christadler, managing director of CK Abbruch & Erdbau, explains his thoughts on choosing Mobirex.

"Quality is the deciding factor in processing the material. It is very important to deliver a perfect product to customers, because we compete with natural products like crushed stone and gravel. In other words, our final product has to be processed to be as cubic and as accurately classified by grain size as possible. We also attach great importance to efficiency. Every drop of fuel and every kilowatt of electricity counts in our work, because these savings add up over every hour of operation. My team and I also see safety as a top priority. Systems such as the 'Lock & Turn', with its key transfer system, are a real improvement in safety."

Markus further explains how he uses Kleemann plants for different jobs. "We always adapt the rotor ledges on our MR 130 Z EVO2 impact crusher. We have a rotor ledge set for hard material like concrete rubble and natural stone, and another for soft material

like asphalt. But since we usually feed the plant with hard stone, we actually don't have to change sets very often. Together with our contact at the Wirtgen Group sales and service company in Augsburg, we have set up a schedule for the provision of wearing parts, so we are automatically supplied every three months with new rotor ledges for our Mobirex impact crushing plant. If we occasionally see more extensive wear, they get the corresponding spare part to us right away. In addition, our employee who operates the plant always keeps a set of rotor ledges and the most important wearing parts on hand at every construction site."

The crusher is well thought of by Markus' staff. "What my guys are truly thrilled about is the 'Spective' control system. It is very intuitive and simple to operate. It's also incredibly practical that operating statuses like fuel level are so easy to check. From the standpoint of cost efficiency, I like the high productivity combined with low fuel consumption and the short set up times associated with Spective. There is one more technical detail that workers always praise: the air classifier. We used to do the final sorting of crushed material by hand. Now the air classifier handles most of that job by separating oversized grain from lightweight foreign material with a blower. That increases quality and saves time."

Mone Brothers based in Leeds, UK, is another company that relies on the Mobirex. At the company's fireclay recycling centre to the west of Leeds, a MR 110 Z EVO2 recycles mixed rubble. The impact crusher



changes between brick and concrete rubble. Dumper trucks drive into the centre bringing mixed rubble from demolition work and construction sites and takes back crushed and cleaned material. While broken bricks are recycled into hardcore according to British Standard 6F2 and used primarily as a capping layer in road construction, the concrete is used as a Type 1 layer for sub base purposes. Mone Brothers works with the local utility industry and supports the expansion of the electricity, water and gas network with its material. The companies deliver their mixed rubble and drive away again with recycled Type 1.

Thanks to a higher permissible oversize grain content, it is possible to dispense with a closed circuit for 6F2 and increase feed capacity. The MR 110 Z EVO2 then has a capacity of 280t/h. For the recycled Type 1 material, the system changes its location and the secondary screening unit is mounted in approximately 15min. With the integrated oversize grain return conveyor, the capacity is still 250t/h while meeting the necessary standards for road construction. These products are typically produced in the United Kingdom with jaw crushers, of which Mone Brothers also having one from Kleemann based in a quarry.

According to Michael Coleman, managing director of Mone Brothers, the impact crusher achieves a grain



shape in one crushing stage that a jaw crusher could not come close to without a second crushing stage. The slightly higher fine content helps to bind the material during later use and equates to the required quantity. The higher performance of the Mobirex is also a highlight. While jaw crushers offer a recommended crushing ratio of 7:1 in recycling, impact crushers can achieve a ratio of 15:1 and a greater feed size. Mone Brothers therefore

replaced two of its jaw crushers with one impact crusher. Thanks to the diesel direct electric drive concept of the Kleemann Evo crusher, this reduces operating costs by another 15%. "We did try other machines but actually they could not produce enough of the product at the right speed and they were much more expensive to operate," says Coleman. "The output is truly mesmerising and it has been a real benefit to the business."



## WE ARE BACK

NEW LOGO  
NEW COLOUR  
NEW LOCATION  
NEW E-MAIL

## SAME QUALITY

### EXTREME DEMOLITION MACHINES



WWW.RUSCHCRANES.COM

Contact Ruud Schreijer: [rsc@ruschcranes.com](mailto:rsc@ruschcranes.com) +31 6 51598433



## Dynaset offers solutions for spreading disinfectant fluids

Dirtier surfaces are often a danger to health and well-being due to bacteria. High pressure washing often provides a solution to this problem but even though high pressured water has deep cleaning attributes, there are often washing tasks that require a tougher solution. Dynaset HPW pumps can be used for spreading the most common disinfectant fluids which means that they can be spread rapidly and efficiently to such areas as staircases. The Dynaset KPL High Pressure Street Washing Unit can also protect the operator. For example, a compact loader equipped with a KPL unit enables the driver to stay in the cabin while disinfection takes place. In addition to this, large areas can be treated faster and more efficiently than by hand. On top of that, the consumption of the disinfectant fluid is easily adjustable with a mixture ratio, providing more accuracy resulting in disinfection tasks being done with a washing pistol and hose reel, which are included in the unit. The washing pistol can be equipped with a jet nozzle, which allows the fluid to travel up to 20m, enabling the washing of railings and benches for example.

## The European Decontamination Institute welcomes Astillo as its latest member

Astillo is a company that has been involved in asbestos removal and related fields for over 20 years, expanding its offering to supply specialist machinery and tools to meet growing demand. Astillo's machinery is designed by field engineers in close collaboration with site operators, in fact, the company's offering is the result of two decades of experience in removing surface contaminants such as asbestos, lead, polychlorinated biphenyls (PCB) and ionizing radiation. Thanks to their design and efficiency, Astillo's offering provide customers with leading solutions for the treatment of these contaminated surfaces. They have features to maximise productivity whilst complying with industry standards in such areas as in minimising dust emissions that are captured at source. Astillo's 'chip' machines for example are equipped with tools designed to meet most surface carrier/contaminant components on construction sites, paint on concrete, glue on pavement, bitumen on cement, glue on steel and so forth. Furthermore, the company's design office works with customers to respond to specific requests and providing the best solution to solve problems.



From the right: Kristoffer Johnsen, Production Director and Martin Persson, Technical Engineer and Product Developer.



Marketing Director Marie Peil.

## Pentruder's new HFi technology platform near completion

A complex and very comprehensive work on the new technology platform for Pentruder concrete cutting equipment is nearing its end. Tractive AB has with its new HFi technology taken a big step into the future.

Kristoffer Johnsen, Manufacturing Director at Tractive, summarises the project: "It has taken longer than we planned for but we have reached our high goals regarding weight, performance and safety. We have invested a lot in operational reliability both for mechanics and electronics, which the users will notice. One challenge, however entirely necessary, has been to achieve the highest EMC rating. This will increase reliability, especially when a generator is used.

Kristoffer continues: "Everything is developed from the ground up, and is based on a groundbreaking engine with extremely high power / weight ratio and advanced motor control. The efficiency is as much as 93%, which enables high power in a compact saw. All components and manufacturing methods are selected to provide a durable product, such as the highest quality of magnets and innovative manufacturing technology to keep them in place.

The fact that Tractive as a relatively small company has been able to take this technological leap is only thanks to cooperation with a few important partners

with cutting-edge knowledge. Marie Peil, marketing director, says: "To be completely honest we were on the wrong path for a while but we took the time to stop that, and start all over with a new concept with a separate power pack instead of integrated electronics on the saw head, and with a new partner for motor control. We are certain this was the right decision, although it has delayed the market introduction substantially."

Concrete cutting is a tough job, and Pentruder always has the concrete cutters in focus. Priority was therefore given to weight and ease of use. One of the most important goals when Pentruder RS2 was developed was to bring out a wall saw weighing less than 25 kg. Furthermore, EU directives state that 25 kg is the highest weight for a single person to handle. The target was achieved and the RS2 weighs under 25 kg including an integrated 18 kW motor.

Both power pack and radio remote control are developed by Tractive and partners and are adapted to the tough conditions in the concrete cutting business. The radio remote control is sturdy, water proof, has a long battery life, clear display and very secure radio transmission. The Pentpak 3 which drives the RS2 wall saw is also water proof and very robust.

[www.pentruder.com](http://www.pentruder.com)







# ARMS YOUR FLEET FOR THE TOUGHEST MISSIONS



Mantovanibenne s.r.l.  
[www.mantovanibenne.com](http://www.mantovanibenne.com)  
[sales@mantovanibenne.com](mailto:sales@mantovanibenne.com)







**BUSINESS IN BERLIN AT**

# Fachtagung Abbruch 2020

***This year, Europe's largest industry event boasted a record attendance of more than 1,100 participants, 127 exhibitors and over 1,000m<sup>2</sup> of exhibition space. PDi Magazine reports from Fachtagung Abbruch in Berlin.***

**T**he German Demolition Association's annual conference provides German manufacturers and equipment dealers with a chance to network with fellow industry members and participate in topical lectures whilst enjoying an industry focused exhibition. The conference, with its familiar feel and tightly knit layout, provides attendees with the chance to come together, discuss potential deals and present new products.

"This event is very good, it's very well organised," said Martin Müller, production manager at Janser, when PDi went to Janser's booth at the exhibition. Right behind him stood the company's new 'IonBox' 1000, a 55kg 240W air ioniser which can handle volumes of up to 1,000m<sup>3</sup>. Martin stressed that the conference and exhibition provides companies such as Janser with an opportunity to highlight new products to the whole German demolition industry. "All the professionals of the industry are here, the major players. It's a good mixture of manufacturers and demolition companies."

Similar views were shared by other attendees, such as Jeroen Van Voorden, international account manager at Dehaco, who described it as, "A really good opportunity to meet the dealers." A couple of metres away at Hydraram's booth, export director Peter Wassenaar called the event 'one of the best' and praised its relaxed atmosphere. Hydraram certainly added to the relaxation with their massage chairs. For the more adventurous visitor, Hydraram also offered a virtual reality ride. With

a smile on his face, Wassenaar remarked: "You have to try something unique."

## **New products from Blastrac, ICS and Allu**

Nearby, Blastrac was highlighting the BS-75, a self-propelled floor stripper. "It can be easily demounted into three parts: the motor, the middle part and the

handle," said Alexander Saalman, product and marketing manager at Blastrac. Its small size and electrical drive makes it suitable for indoor and outdoor medium sized renovation jobs. Other new developments from the company included the BMC 335Elite grinder, which is a heavy duty electric shaver with increased weight for more efficient sawing action. It is also available in a







**Oliver Struth from ICS Blount Europe SA with the gas driven cutter 695XL.**



**Peter Wassenaar, export director at Hydraram.**



**Martin Müller, product manager at Janser, by the new IonBox 1000.**



**Stefan Sparwel, head of business development at Kinshofer, with the new D37HPX demolition and sorting grab.**



**Tim Hasekamp, sales manager at Dustcontrol, with the DC Tromb Twin.**



**Jeroen Van Voorden, international account manager at Dehaco.**



**Christian Krolle, managing director at Deconta.**



**Alexander Saalman and Kai Walden from Blastrac with the new BS-75.**

remote controlled version and features a special operating handle with depth indicator and integrated control panel, one lifting eye and three swivel front wheels.

Over at ICS, one of the latest releases was its most powerful gas driven cutter, the 695XL, which features an easy to start engine with a higher energy ignition system, as well as a new muffler, carburettor, piston and cylinder. Based on the 695 saw platform, the 695XL is the highest horsepower ICS gas power cutter for frequent use for general construction, utility contractors and concrete professionals.

Allu was also present at the conference and highlighted its new Allu Crusher, which was launched in March at Conexpo/Conagg in Las Vegas, USA. The Allu Crusher features reversible crushing, feed plate design built into the jaw and simple mechanical pin adjustment for output size regulation.

#### **New dust protection equipment from Deconta and Dustcontrol**

Deconta, which manufactures safety and environmental technology, presented its new dust protection door, 'Smart-Door', which covers door openings and ionises the entire room. "It is foldable and simple to carry around," said Christian Krolle, managing director of Deconta, as he demonstrated it together with the new negative pressure unit S200. The S200 is connected

to the internet and, thanks to the new SRE 'Connect' feature, can be controlled via a smartphone.

Another new development in dust protection side was Dustcontrol's DC 'Tromb Twin', a portable dust extractor with integrated pre separator for large amounts of dust. It is particularly suitable for concrete grinding as 80-90% of all coarse material is separated in the pre separator, with the remaining dust entering the filter cyclone. "You can use it together or disconnected, separately," explained Tim Hasekamp, sales manager at Dustcontrol, who added, "The reception has been very good for this product."

#### **Maintenance free concept from Kinshofer**

At the Kinshofer booth the new D37HPX demolition and sorting grab equipped with Kinshofer's cylinder-less 'HPXdrive' technology was displayed. "The user can change shells and still use the same module," said Stefan Sparwel, head of business development at Kinshofer. The HPXdrive has been used on grabs for excavators with an operating weight of up to 4t, 6t and 9t respectively and is now available for excavators up to 37t. The shells are driven by the compact HPXdrive, providing a constant closing force for the complete opening and closing process. The torque is generated by two pistons, which run opposed and have four helix threads, with the force being delivered to two shafts on which the shells are mounted.

The range offers large re-handling clamshell buckets as well as timber and universal grabs for excavators with an operating weight of up to 40t. There are no greasing points, as the interior parts of the HPXdrive run with the oil of the hydraulic circuit. The integrated rotation features sealed swivel and bevel, directly accessible rotary feedthrough and motor, plus an integrated non return valve. The perforated shells of the demolition grabs let fine dust and gravel through.

The 'D-HPX' series is suitable for both daily work and more difficult tasks, with the HPXdrive and its integrated rotation forming a compact unit with no protruding components, such as cylinders. The large D-HPX series comprises the D27HPX for excavators with up to 27t operating weight, D32HPX up to 32t and the largest, D37HPX, up to 37t operating weight. The D37HPX presented at Kinshofer's booth also featured an integrated OilQuick adapter.

#### **Expanded range of concrete cutters from Rotar**

At Rotar's booth, commercial director Louis Broekhuizen shared the news of the company's expanded range of RCC concrete crushers which has been increased from one to three, now comprising of the RCC 20, the RCC 25 and the RCC 30 for carriers of 18-25t, 20-30t and 25-35t respectively. The RCC series is characterised by 'Ramplifier' technology, which is installed inside the





# ENHANCE YOUR PRODUCTIVITY

High Frequency Electric  
Wall Saw DST 20-CA



**CUT**ASSIST

## Enhance your productivity.

Hilti has set a new standard with its latest generation of DST 20-CA wall saws. The new saws provide a 30 percent increase in power compared to the previous generation, while having three times the starting torque. The DST 20-CA high frequency electric wall saw is the first saw in its power class without a power box. The integrated electronics in the saw head simplify transport of the saw and make also lengthy set-up times a thing of the past. A cordless remote control displays the cutting depth in real time. Thanks to the integrated CutAssist system the saw operates on a hands-free basis.





cylinder rods. The Ramplifier amplifies the forces and is activated based on resistance. Once the resistance rises above 250bar, the Ramplifier is activated. Once the resistance drops, it turns back to normal speed modes. Once the machine pressure rises to 350bar, the output of the RCC with the Ramplifier technology creates up to 700 output pressure on each cylinder. The outside of the cylinder looks like a standard cylinder, with the technology being protected in the rod of the cylinder.

Rotar states that the Ramplifier is the most silent booster available in the demolition industry. "The cutters have a very light sound because of the cylinder oil," explained Broekhuizen. The RCC also has a system for interchangeable wear parts which avoids welding on the jaws making it easy to maintain the wear parts in a short period of time on the job site. Broekhuizen concluded: "Avoiding welding extends the lifetime of a pair of jaws and reduces downtime of the tools."

**Interesting lectures on a wide variety of topics**  
Adjacent to the exhibition area was the lecture room, where a total of 15 presentations covered a wide range of industry related topics. Alix Reichenacker from the Dutch cooperative PolyStyreneLoop, for example, presented how EPS and XPS insulation materials can be recycled using a novel process. Lectures on the latest developments in TRGS 519 and the 'Industrial Safety Regulation' brought the audience up to date on the latest developments in these areas. Examples from construction site practice were made clear including the difficult conditions faced when dismantling often has to be carried out in such areas as inner city sites, high rise buildings, as well as the selective partial deconstruction



Oliver Viehwig, area sales manager at Allu.



Louis Broekhuizen, commercial director at Rotar.

of an active chemistry park. Members of the Blasting Technology Committee of the DA also showed the precision with which buildings can be blown up under the most difficult conditions.

In view of the challenges faced when recycling construction materials, Andreas Pocha, managing director of the German Demolition Association (DA), stated that members should, "Have courage to rethink and courage to innovate," Ranga Yogeshwar, physicist and science journalist, also asked for collective industry courage to 'rethink' in his keynote speech.

Awards were also presented, with the much sought after DA Innovation Prize being awarded to Daniel Rank from the Technical University of Munich. This was for his research about the possible uses for minerals

emanating from the recycling of construction materials, for which he used the example of the former Bavarian barracks in Munich. In cooperation with the company Ettengruber, he showed that it was possible to construct a model building with 100% recycled aggregates from the demolition material from the barracks. Since such aggregates are not permitted by law, building inspection approval was necessary, as Michael Weiß, managing director of Ettengruber, explained in his lecture.

The conference ended with a dialogue evening and get together in the bar area. Despite the conference's already relaxed atmosphere, this provided a chance for the attendees to mingle in a less formal manner after an active and successful conference. The next Fachtagung Abbruch will be held on 5 March 2021.

## THE NEW ANNA FAMILY HIGH PERFORMANCE CUTTING FOR PROFESSIONALS

**TS40 ANNA**  
Disc Saw

**TR40 ANNA**  
Ring Saw

**TK40 ANNA**  
Chain Saw

**FU6U**  
Frequency  
Converter

For more information about our products and contact details of WEKA sales distributors, please visit our website.

[www.weka-elektrowerkzeuge.de](http://www.weka-elektrowerkzeuge.de)

# » GAINING GROUND WITH US!



» LET YOUR GRINDER DO THE JOB!  
REMOTE CONTROLLED FLOOR GRINDERS

» Suitable for large areas **DSM 800RC**  
or for agile and versatile use **DSM 650RC**  
offering considerably enhanced operator  
comfort and a high level of productivity



WATCH OUR VIDEO ABOUT  
THE RC PRODUCT FAMILY ONLINE

[www.schwamborn.com](http://www.schwamborn.com)

 **schwamborn**

...gaining ground with us!





## New 'Super Compact' Dynaset hydraulic generator models

Dynaset's new hydraulic generators are lighter and smaller than ever. They can be up to 95% smaller than diesel generators with equivalent power, with the new 'Super Compact' models being introduced at Conexpo/Conagg Las Vegas, USA.

Dynaset's HG hydraulic generators convert the hydraulic power of machines, vehicles and vessels into electricity providing a power range of 3.5kVA-350kVA with high levels of reliability and a compact size alongside backed by worldwide support. The latest release includes a completely new set of standard HG models with 60kHz frequency operating in the 3.7kW-38kW power range. The generators are light weight and are of a compact in size, enabling the easy installation on any vehicle and possess a robust design with UL certification pending.

Also new is a 3.5kVA hydraulic generator which is smaller than the previous model and is 2kg lighter. The 3.5kVA 50kHz model uses a new type of hydraulic motor which is also included in a 3.7kW 60kHz model. The key improvement of the new model is its much improved hydraulic requirements. The hydraulic generator requires only 18l/min of hydraulic oil flow instead of 23l/min as in the previous model. The new model can be installed on machinery with a limited hydraulic output, for example, small platform lifts.

In addition to the above, Dynaset has introduced a new 19kVA model that is 35% smaller than the equivalent older model. The completely new 26kVA model is 90% smaller than the typical equivalent diesel generator, with the size difference being highly significant, as one equivalent older diesel generator takes as much space as ten HG 26kVA hydraulic generators. This is even more significant when the HG 35 kVA hydraulic generator is compared to a diesel generator, with the Dynaset hydraulic generator being 95% smaller.



## DOOSAN LAUNCHES HYBRID WHEEL LOADER

A prototype hybrid iteration of the Doosan DL200-5 wheel loader, the DL Hybrid, was shown for the first time in North America during Conexpo/Conagg 2020, with the hybrid model configurations aimed at being available in North America as early as 2023.

Doosan has been developing the hybrid powertrain to offer the same size wheel loader with additional fuel savings by combining diesel and electric power sources. The electric motor and diesel engine work in tandem to provide the same level of torque and output that a larger diesel engine does. Doosan designed the hybrid iteration with a smaller diesel engine than is used in the standard model today. However, there is no noticeable difference in the wheel loader's performance, with the smaller diesel engine helping lower the wheel loader's fuel consumption.

In addition to offering fuel savings from its hybrid design, the powertrain could be used as an option for customers working in sensitive areas where environmental concerns are greater than normal. Doosan has stated that it may apply similar hybrid technology to additional wheel loader models in the future, thereby continuing efforts to offer solutions for reduced emission power systems.

Doosan Infracore North America, LLC, is headquartered in Suwanee, Georgia, and markets the Doosan brand of products that includes crawler excavators, wheel excavators, mini excavators, wheel loaders, articulated dump trucks, material handlers, log loaders and attachments. With more than 150 heavy equipment dealer locations in North America, Doosan is known for its dedication to service and customer uptime, supplying durable, reliable products.

## Ausa exhibits at two of US biggest trade shows

Ausa, a leading company involved in the design, manufacture and sale of compact all terrain industrial vehicles has continued to consolidate its position in the US market. It has recently exhibited at World of Concrete in Las Vegas and the ARA show in Orlando, which focuses on the rental market. At both trade shows, Ausa exhibited its ranges of dumpers and all terrain forklifts, with different specifications tailored to each sector.

### World of Concrete

Visitors to Las Vegas showed interest in Ausa's compact dumpers, which are ideal for the sector thanks to their small size and ability to handle any terrain. One of the models exhibited, the D100AHA Compact, can fit through the doors of houses as it is only 1m wide. Additionally, an optional accessory for dumpers, the concrete chute, was shown, which enables highly accurate concrete pouring. As all terrain forklifts also play an important role in the concrete industry, Ausa also exhibited a 4,000kg model that can be

used to quickly move bulky loads on construction sites through its exclusive 4x4 drive, being designed to be able to handle virtually any terrain.

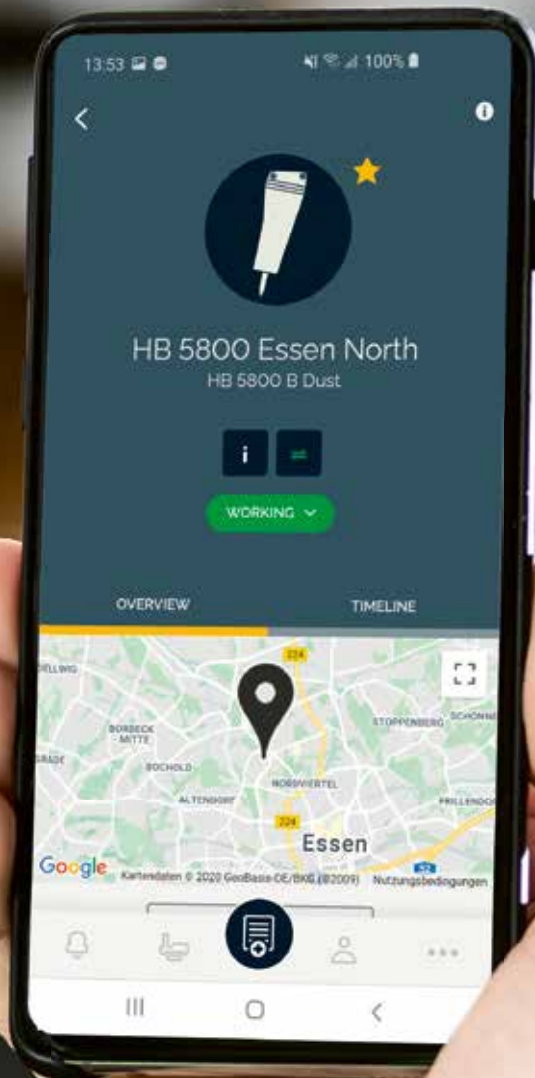
### The ARA Show

During the ARA rental industry trade show held in Orlando, Ausa sealed some important agreements regarding the company's future business. It also exhibited its 6,000kg model which features transmission with a torque converter, called the D601AP. As with all of Ausa's new models, it features telematic systems which allow the monitoring of the machine's activities in real time from any location in the world. This includes everything from the machine's position on the map to the pressure percentage of the accelerator pedal, thus allowing the identification of any errors or vehicle misuse. It also features a digital screen on the dashboard from which the operator can view all of the information in real time and access the vehicle's error menu. This answers a major concern of the rental industry, namely control of the rental fleet.



# HATCON

## A new level of control.



**United. Inspired.**

**HATCON** (Hydraulic Attachment Tools Connectivity) enables next level fleet management by monitoring operating hours, location and service intervals of your tools. By logging in to My Epiroc, on either your computer or phone, you'll have access to all your data and get notifications when it's time for service. HATCON is available factory mounted or as a retrofit kit for premium range breakers and drum cutters.



**Your tools. Connected.**

[epiroc.com/hatcon](https://epiroc.com/hatcon)



# W-technology

A REVOLUTION TO METAL DIAMOND GRINDING TOOLS

- \* GRINDING FASTER: 30% FASTER THAN TRADITIONAL METAL TECH;
- \* ANTI-BURNING: 2 HOURS CONTINUOUS GRINDING WITHOUT BURNING;
- \* HIGH CONSISTENCY: QUALITY CONSISTENCY GUARANTEED;
- \* COST-EFFECTIVE: SAVE TIME, LABOR, AND MONEY.



[www.ashinediamondtools.com](http://www.ashinediamondtools.com)  
[www.linkedin.com/in/ashinediamondtools](https://www.linkedin.com/in/ashinediamondtools)

# **TOPTEC**

---

## **SPEZIALMASCHINEN GMBH**

**TOPTEC** Spezialmaschinen GmbH  
**REMOTE CONTROLLED DEMOLITION ROBOTS**  
Breithornstraße 10 · D-81825 München  
E-mail: [info@toptec-germany.de](mailto:info@toptec-germany.de)  
Tel.: +49 (0) 89 - 42 72 05 50



[www.toptec-germany.de](http://www.toptec-germany.de)





*Whether there is a need break up some concrete or reduce some boulders, there's a hydraulic hammer attachment to fit every carrier and budget.*

**A**long with packing a powerful punch many times a minute, they're also filled with features to enhance efficiency, minimise maintenance and optimise operations. Here we take a look at the latest developments in the breaker industry.

#### Rammer to hit smarter with new releases

The Rammer 'Excellence Line' continues the company's 40 year tradition of delivering innovative hammers designed to improve profitability, safety and performance. Officially launched at Conexpo/Conagg, the Excellence Line comprises of state of the art hydraulic hammers that are ready for all breaking requirements, with the largest member being the 9033E for carriers in the 65t to 120t range. The Excellence Line has been designed to make it easier to adjust idle blow protection (IBP) in the field, decreasing both operating and maintenance costs. IBP ensures that the hammer cannot be operated until pressure is placed on the tool, also protecting the tool from failure and tie rod stress, reduces oil overheating and protects against premature failures. In addition, all large Rammer hammers have another 'easy in the field' adjustable feature, 'Stroke Selector', which allows the operator to optimise hammer operation according to material and application.

Other Excellence Line features include separate greasing channels from the valve body to the upper and lower tool bushing to increase tool/tool bushing lifetime; new, robust plastic wear resistant plates for optimum hammer protection and noise reduction; and easy to use pins to expedite field replacement of the lower tool bushing. However, perhaps the biggest development within

the Excellence Line is Rammer's purpose developed RD3 remote monitoring device, which is a standard feature on all Excellence Line models (RD3 is also available as an option for Rammer 'Performance Line' hammers and as retrofit-kit for older Rammer hammers). Using the latest GPS and Telematics technology, RD3 uses the Rammer 'MyFleet' Telematics service to track and monitor fleet

equipment usage via Google maps. It also comes with a new hammer feature, the 'hour meter', which is linked to the unit's serial number to measure the exact number of hours it has worked. The system further enables owners and managers of fleets to know exactly where their equipment is and how it is being used.

**[www.rammer.com](http://www.rammer.com)**







### Epiroc's 'HATCON': Hydraulic Attachment Tools Connectivity

Also entering the remote monitoring arena is Epiroc, whose HATCON device is designed for breakers and drum cutters that keeps track of location and operating hours to improve efficiency and safety. The cloud based 'My Epiroc' platform gives user notifications about service, creates task lists and provides an overview of the entire fleet. All data is presented in a straightforward way to simplify both everyday duties and long term decisions. HATCON is available factory mounted or as a retrofit kit for Epiroc premium range breakers and drum cutters. Once connected, the system monitors every individual tool and keeps customers updated via My Epiroc. Notifications about service and wear part alerts are just a few of the features that will help increase efficiency.

### Komatsu and Montabert team up for a new breaker line

To meet North American customer demand for rock breakers, Komatsu is launching a full range of hydraulic breakers specifically for that market. Manufactured by Montabert, these hydraulic breakers are designed and tested to fit Komatsu excavators from the PCMR30-5 up to the PC800LC-8, without modification. The product line is among the first product rollouts since Komatsu acquired Montabert earlier this year. The new breaker range will offer the French company's longstanding tradition of exacting quality, performance and durability in a Komatsu themed package. The breakers' high percussion efficiency and unique variable energy technology provide high production in multiple applications. To protect customer investment in the

equipment, they feature an anti-blank firing system and automatic greasing.

Backing up product quality is an enhanced service and support network for North American customers, including a new 4,645m<sup>2</sup> distribution and customer care centre in Nashville Ill., and breaker remanufacturing facility in Chattanooga, Tenn. Montabert is also planning to open a new remanufacturing facility in Elko, Nev.

### Red Line membrane type breakers from Green Attachments

The 'Red Line' hydraulically operated membrane type breakers from Green Attachments have been designed for mining, demolition, tunnel construction, underwater applications and boulder breaking. Movement is achieved by the hydraulic oil pressure on the piston head and accelerated by the oil and gas load of the accumulator on the top of the piston. This accumulator maintains a constant pressure at the top of the piston, with gas being added only during service. The membrane type Red Line breakers are fully hydraulically operated which provides reliable operation. They can operate in all positions due to a long and light piston and a large number of seals. Other features include constant blow energy, low wear, and good hydraulic shock absorption thanks to a unique buffer system which keeps the oil's thermal heat low for energy savings, while side rods are covered with polyurethane. The hydraulic rock breaker range consists of 19 models for 0.75t to 100t excavators.

Also from the company is its gas assisted economy 'Piikki' hydraulic breakers for customers who have only an occasional need for a breaker. This range is ideal for demolition and excavation assistance, frozen ground breaking etc. Piikki breakers accept higher back pressure and generally larger scale of hydraulic circumstances than fully hydraulically operated ones. Composed of relatively few parts, they also keep operational costs low. Piikki breakers offer many of the same features as the larger Red Line models, including a system of side, top, and bottom buffers that provide special impact and vibration absorbing properties. Tool and piston diameters are matched for maximum energy transfer.

### News from Indeco

The smallest hammer in the Indeco range, the HP 100 FS, is being introduced to the US market as the HP 150



FS due to customer demand for equipment or mini-excavators from .75t upwards for working in restricted work areas. Capable of 'top' performance even with reduced hydraulic flow, they provide excellent productivity through a high impact energy per blow. Two lightweight members of the Indeco small hammer range - HP 550 FS and HP 400 FS - have been updated to now deliver improved performance with new powerful features. Both have higher energy classes, higher tool diameters and deliver more blows per minute. This upgrading has not changed the hammer size and design of either model, being ideal for 2.5t excavators for the HP 550 FS and 3.5t-6.5t for the HP 400 FS respectively. Finally, Indeco's new HP 6000 FS takes up a position midway between the HP 5000 and the HP 7000 as a response to a specific trend in the excavator world, as 30t carriers are increasingly being replaced with slightly larger models weighing up to 36t. The new hammer is designed for excavators in the 35t to 45t range, with what is said to be an excellent power to weight ratio.

### Prodem's family of workhorse breakers

The Prodem PRB series is a comprehensive range specially designed to be cost effective without compromising power or durability. From the small but dynamic PRB008 right through to the mighty PRB1000, they are all workhorses. A unique valve design and high pressure accumulator in the PRB170 and higher models work to eliminate pressure fluctuations and increase impact power, all the while minimising damage on the excavator pump. The hydraulic hammers also have a specially hardened and heat treated piston that gives long piston strokes which minimises recoil and eliminates mechanical springs. All models in the PRB series features an optimal damping system made of high quality elastomer, which minimises impact induced recoil shock, vibration and noise.

Prodem hammers from the PRB150 upwards feature anti-blank firing to significantly reduce blank blow induced failures and downtime, therefore increasing productivity. The models' dual speed control adjusts the blow frequency of the hammer to the density of material to maximise productivity: low power/high speed for concrete breaking, soft rock and reducing boulders; high power/low speed for quarrying and trenching. All



**Designed  
to your  
specifications**



It's by getting to know your job down to a T that we can do our best job. That's why we'll be by your side throughout - in order to listen to your advice, understand your needs and provide you with a range of tools that will satisfy your every requirement in terms of productivity, efficiency, reliability, versatility and durability.

[www.indeco.it](http://www.indeco.it)

 **INDECO**  
A TOOL FOR EVERY JOB





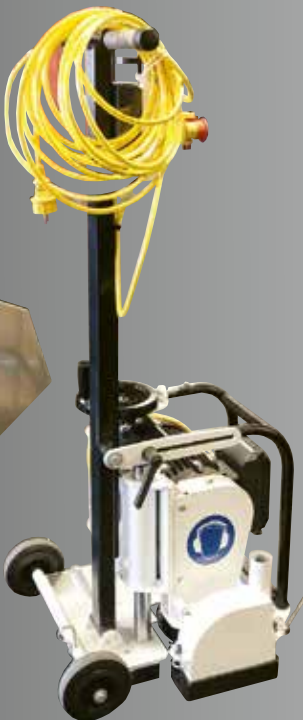
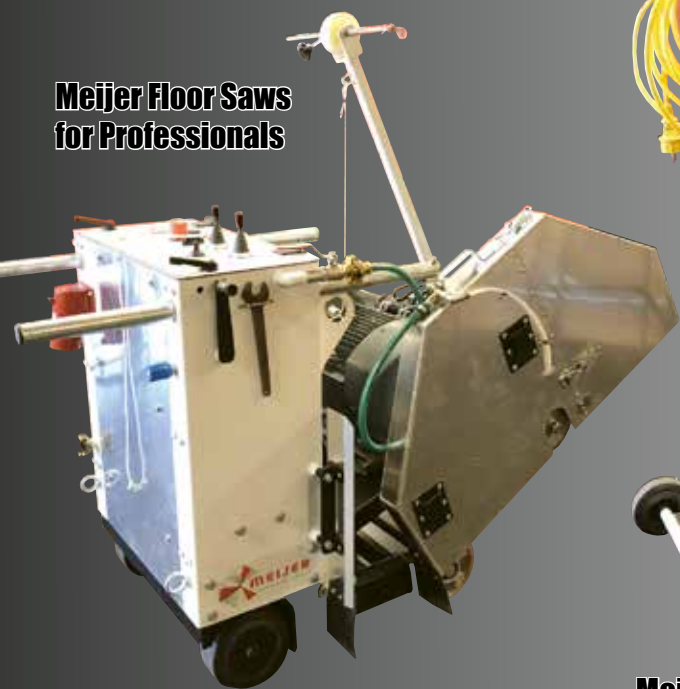


**MANUFACTURER OF DIAMOND TOOLS AND MACHINES**

***The Professionals Choice***

**Made in Holland**

**Meijer Floor Saws  
for Professionals**



**Meijer Floor Heating  
Loops Cutter**



**Modular Drill Stands for  
Professionals • CNC Precision**

**Specialized in Hollow  
Core Glass  
Pre-Stressed Concrete**



**Meijer Hopper for  
Efficient Dust Extraction**



**New Tech Drilling,  
Extremely Fast in Iron**



**DRILLING**

**SAWING**

**FACTORY**



**Meijer Diamond Tools • [www.meijertools.nl](http://www.meijertools.nl) • tel: +31 313 659555 • email: [info@meijertools.nl](mailto:info@meijertools.nl)**



models feature a hardened rock claw that resists wear and abrasion, with a through bolt which reduces internal torsion stress and increases fastener life. They also have an extremely durable welded full box enclosure with no rigid side bolts to protect components and reduce noise. All come with two tools optimised with high grade steel and heat-treated to maximise durability and efficiency. The hammers are also designed to be easy to maintain as there are fewer moving components and feature a centralised lubricating system, with the option of installing an auto greasing kit.

[www.prodem-attachments.com](http://www.prodem-attachments.com)

#### Hammer builds breakers for every need

Thanks to an over than 40 years' experience, Hammer offers customers a wide range of quality breakers, supported by high level after sales service. The dedication to the customer and the great skills of Hammer's technical staff (constantly updated) result in full availability for any kind of customization request by its customers.

Hammer's 8 models of SB series is designed for excavators from 5t to 11t, while the 14 models of the FX series are suitable for excavators with operating weight from 10t to 200t.

Hammer's SB and FX breakers can tolerate 25bar back pressure and they are designed for easy installation on site. Besides the power, Hammer FX series breakers are provided with a special hole for the compressed air passage, located in the front of the breaker, designed for underwater demolition works. All Hammer's breakers have a closed casing design integrated with one upper and one lower shock absorber made of polyurethane,

which decrease vibrations and noises, while respecting the environment, thus reducing ordinary maintenance costs. Hydraulic connections are located inside the casing and they are protected by an elastic rubber cover, giving the breaker the opportunity to work in narrow spaces. A specially developed lip seal prevents the loss of nitrogen from the chamber, thus ensuring efficiency and reducing downtimes.

Hammer attended to Conexpo 2020 in Las Vegas, through the sister company Kinshofer America, by introducing the SB and FX series and having a huge success thanks to their innovative performances. Today, thanks to the locations based in Burlington - North America and in Sanbor, in New York state - US, it is possible to buy Hammer's products in cooperation with KinshoferGmbH in the American continent.

Furthermore, Hammer can claim the production of the biggest breaker in the world, i.e. FX 15000 model, which has been sold in the 2018 in Chicago, Illinois and that is still fully operational, with excellent performances and complete customer's satisfaction.

[www.hammereurope.com](http://www.hammereurope.com)

#### Two new breakers from Promove

Promove's new 600kg XP600 and 200kg XP200 complete the company's XP series of high performance hydraulic breakers. The XP series boasts energy recovery and anti-blank firing systems, a power/ frequency automatic regulation system, and innovative smart valve with a 'plug and play' feature that allows users to install the breaker without having to adjust any settings on the excavator. In addition to significant time/cost sav-

ings, this eliminates future problems such as premature breakages due to extra flow. This system also allows the breaker to be moved to various machines, making it easier to rent out equipment.

For use with a mini excavator, Promove's five model light range, which weigh 60kg to 430kg, have been designed to provide a combination of strength and performance, with the 60kg model being ideal for use in even the smallest demolitions site. The larger XP 101 and XP 150 are designed specifically for jobs that require greater delicacy and collateral damage control, offering versatility thanks to their constitutive technology. Shock protection absorbers, mounted above and below the hammer body, avoid vibrations and damage to the excavator arm. The nitrogen valve is easily accessible for faster and more efficient gas control or for refill operations, whilst a low pressure chamber improves the energy at each blow and, together with the increased diameter impact mass, produces a more powerful blow.

#### Idromeccanica returns to Conexpo/Conagg

After a 20 year absence, Idromeccanica Italiana, once again took its place on the international marketing stage with an impressive display at Conexpo/Conagg which included the IMI 88HP, equipped for skidsteer loaders, and the versatile IMI 121M for machines in the 15t to 24t range. 'Breakers and beyond' was the theme for the company serving as a reminder that Idromeccanica manufactures more than a full range of breakers to suit any machine from 1t to 50t. The company also makes other attachments for demolition, mining, recycling and road works.

During the exhibition, Idromeccanica's staff identified different trends and needs in the US market regarding hydraulic hammers. The most requested among these are for machines from 40t to 50t and for machines from 4t to 10t. Idromeccanica hopes that the expectations before the exhibition will not be significantly cut back due to the severe global emergency, especially since exhibition attendees were able to explore new products, technologies and services. The company's staff found this Conexpo/Conagg quite successful, optimistically believing that the show 'must go on'.



# COVID-19

## PARALYSES THE EXHIBITION INDUSTRY

***Never have the first six months of a year been so empty of demolition, concrete cutting, construction and recycling exhibitions and conferences. Instead September and October are now set to be packed with shows and conferences all over the world, with organisers hoping they don't need to change dates again.***

**L**ike all other industries, the global construction and civil engineering industry is highly dependent on different types of meeting places to be able to develop and exchange ideas, products and services. The curtailment of these trade fairs and conferences has hit the global market and economy hard, with the Corona crisis directly leading to the postponement of such events. However, the year started off well with World of Concrete in Las Vegas proceeding as planned.

### Three successful US shows

A week after WOC, the United States Demolition Association, NDA, organised its annual conference and trade show, this time in Austin, Texas. PDi and PDa were represented with a booth. However, people had returned home before the effects of the real outbreak of the virus in China were felt. A couple of weeks later, it was time for this year's largest global show, Conexpo/Conagg, again in Las Vegas.

Rumours were heard that the show would be cancelled or postponed, but many exhibitors were in place and ready to exhibit. By now the infection had arrived in Europe and many exhibitors and visitors chose to go home earlier than planned. However, not everyone succeeded and we have heard many stories of people who had to rebook their tickets through other countries at a significantly increased cost, both for the ticket price and extra nights in hotels.

PDi Magazine's editor, Andrei Bushmarin, who lives in Saint Petersburg, Russia, managed to return

home early via Helsinki. Russia had closed its airspace and was about to close its borders. However, Andrei managed to catch the high speed train from Helsinki to Saint Petersburg at the 11th hour, just before the border closed. After Conexpo/Conagg had finished, virtually all trade fairs and conferences had been cancelled or postponed. The reason: Covid-19, of course. Here follows a short review of changes related to the construction and civil engineering industry.

### Cancellations and changed dates

The German diamond tool and concrete cutting show was to be held in Willingen in Germany at the end of March. The International Trade Association IACDS would have held its annual meeting in conjunction

with the Bebosa fair as well as celebrating its 25th anniversary. Both are now cancelled. IACDS now plans to hold its annual meeting and anniversary celebration in conjunction with the DEMCON show in Stockholm, 24-25 September 2020.

Several trade shows are changing their dates, with the Italian fair SaMoTer, now set to be held 21-25 October 2020. IFAT in Munich, Germany, has been moved to 7-11 September, 2020 and Hillhead in UK will take place 22-24 June, 2021. The APEX show in Maastricht has been postponed from June to September and the Concrete Show in the UK has been put back to 6-7 October, 2020. The European Demolition Association is now set to hold its annual convention 4-6 June 2020 in Belgrade, Serbia, but this is dependent on the Corona virus.

These are just a few examples of how devastating the spread of a pandemic can be for everyone's business. What we can now hope for is that the outbreak starts to ease off. Some researchers and experts predict that we may have passed the worst sometime by the end of May and that most things will start up again during the summer. However, some experts warn that the virus may come back again in the autumn, perhaps not to the same extent as now though. The industry can only but hope that this will not happen, as more fairs are a risk of being moved to 2021.

The question, however, is whether small businesses, such as bars, restaurants and hotels that depend on visitors, will still be in business. In order to slow down the spread of infection, most people in the world have had to curtail social activities, with the hospitality industry being the most affected.

But life must go on. It is dangerous for the entire business community if everyone pulls the emergency brake and the sales of goods and services are wiped out because of fear. Unless the trade in goods and services starts as soon as possible, and are also maintained, a business cycle that was relatively good just a month ago may fall back to levels not experienced since the depression in the 1920s. Today things are different, as it is not an economic crisis but the result of the spread of Covid-19, but if this continues, we will have an economic crisis that we may take many years to come out of.



This is no copy, this is:  
**THE ORIGINAL!**



Scan for info

**OilQuick – The original world leading fully automatic quick coupler system, with more than 30,000 systems sold worldwide!**

For 27 years we have been doing what our competition now call new product development.

Back in 1993 we had an idea, we materialized it and out came OQ – The first fully automatic quick coupler system. Now world leading with more than 30.000 systems sold worldwide!

Lately copies have been surfacing calling themselves revolutionary new products. Some of these copies also claim to be compatible with the Oilquick original, but that's all wrong!

This is our original idea and our technology. Thru years of innovation and research we have established a quality process that will guarantee compatibility between every generation of OilQuick quick couplers. And as you all know – experience matters!

Reliability, high quality, safety and service is what we offer better than anyone else. When you choose OilQuick you can look forward to a problem-free relationship for many years to come.





# ATOMIZED WATER MIST FOR SAFER WORK

Safety has always been our number one focus and the new Brokk Atomized Water Mist is no exception! It's a unique and integrated system that tackles the most hazardous silica dust particles. For safer and cleaner worksites around the world.

Read more at:  
[www.brokk.com/atomized-water-mist/](http://www.brokk.com/atomized-water-mist/)

**BROKK®**



## Tyrolit segments impress in Russia

In a brick factory in the region of Tula, Russia, the steel shaft of a clay mixer was broken. It was quickly determined that the stuck shaft had to be removed in order to continue with the production of the bricks. For this job, Diamond Tech Construction from Moscow was assigned, with the company not hesitating to take on the demanding task. After 11h of work and seven

re-grindings, the pure steel shaft was loose and the stuck shaft, with a length of 600mm, was removed successfully.

For the completion of the job Diamond Tech equipped a core drill bit with a diameter of 132mm, with 14 Tyrolit Premium 840 U-Cut segments with a Pentruder NTGRA drill motor also being used. The sharpening of the Tyrolit segments was not necessary,

even with the powerful Pentruder drill motor operating at 750-760 rpm, and was able to undertake the work satisfactorily.

Tyrolit Premium 840 U-Cut segments have been developed for general usage, but specifically for working on reinforced concrete. They have a segment height of 11.3mm for a longer operational lifetime. They are designed to be used with Tyrolit's CD840 wet drill bits, providing quality tools for the most demanding of applications with maximum cost efficiency. The laser welded segments are up to Ø 300mm for maximum safety and segment geometry for a high stock removal rate.

## DEMOLISHING FOUNDATIONS WITH A KEMROC CUTTER WHEEL

Demolition experts from CK Abbruch & Erdbau were confronted with an unusual task at a job site in Konstanz, on the shores of Lake Constance. To demolish an old hospital, they had to remove a 1,100mm thick concrete foundation. After weighing up all options and calculating expected costs, the team chose to use a Kemroc cutter wheel mounted on a 40t excavator. This proved to be the most economical and the most environmentally friendly solution.

The site of the old Vincentius Hospital in the southern German city of Konstanz had to be cleared before construction could start on the development of a modern residential area complete with retail units and restaurants. The contract for the first phase, which involved the careful demolition of the 40,000m<sup>3</sup> existing building, was given to demolition specialists CK Abbruch & Erdbau GmbH based in Eislingen. They quickly discovered that there was an unexpected challenge; the hospital, constructed in the 1970's, was built on a 2,000 m<sup>2</sup> concrete slab which was over 1m thick.

According to an independent report, the use of an excavator with hydraulic breaker was ruled out because of the unacceptably high noise levels that would be generated. An additional complication was that the vibration from the hydraulic breaker transmitted through soils saturated with water, due to the proximity to the lake, could damage a neighbouring listed building which had to be preserved. Demolition using drill and blast was also ruled out on the grounds of noise and cost. Using a concrete saw was also considered but it wasn't economically viable. After an amicable exchange of experiences with another local demolition contractor, managing director Markus Christadler decided to try a Kemroc cutter, wheel mounted on a 40t excavator.



There are four different size models in the Kemroc DMW range of cutter wheel attachments suitable for excavators from 15t to 60t. Two high torque hydraulic motors, one each side of the cutter wheel, provide high productivity with maximum cutting force. Even in hard rock or heavily re-enforced concrete, there is enough power to achieve high production rates. The availability of several variations of cutter wheel, for depths to 1,000mm and widths up to 400mm, enables use on a large number of applications for the cutter wheel attachment. For this project, Markus Christadler rented a DMW 220\_1000 cutter wheel with 1,000mm cutting depth for a test. After one week of trials on a 40t excavator, results were so positive that the demolition company purchased an identical attachment for the completion of the crucial phase of the project.

### Profitable and environmentally friendly

At the demolition project in Konstanz, the excavator operator cut out 15m<sup>2</sup> blocks which were subsequently lifted and stood on edge using an 80t excavator before being broken up using a shearer. Some of the broken material was processed through a mobile crusher on site

and the rest was transported to a recycling facility. "It would have been quicker with a larger excavator and hydraulic breaker, but under these conditions, it was not possible. Even so, we achieved average rates of 10m to 15m cutting length per hour which gave us a production rate equivalent to using drill and blast but at a much lower cost. The noise monitors didn't record any high values. Drilling 800 to 1,000 bore holes would have been much noisier and uncomfortable for the people living nearby. At surface levels, the cutter wheel was working under a small depth of water so there was very little dust generated," said Markus Christadler when commenting on his first project with his new Kemroc cutter wheel.

Since the project in Konstanz, CK Abbruch & Erdbau have had several applications where they have been able to use the Kemroc cutter wheel, one of which involved the excavation of trenches to tight dimensional tolerances in compact rock for foundations. Markus Christadler summed up his comments on the cutter wheel by saying, "All in all, the cutter wheel attachment is a tool well suited for the demolition of concrete and excavating in urban environments where there are major constraints on pollution."



# A drum roll for drum cutters!

***A relative newcomer on the demolition scene, rotary drum cutter is probably the most versatile excavator attachment there is. Demolition, quarrying, tunnelling, landscaping, underwater cutting, and pipeline construction – that’s an incomplete list of tasks that rotary drum cutters are capable of handling. Embracing this trend, many attachment suppliers have enhanced their arsenals with this spiky multitasker. Andrei Bushmarin reports.***

## **Epiroc cutters receive new monitoring device and ‘Pro’ bracket**

The Epiroc Group entered the drum cutter market in 2017 by acquiring erkat, one of the companies that pioneered drum cutting technology back in the late 1990s. In March, Epiroc introduced ‘HATCON’, a remote monitoring device for hydraulic breakers and drum cutters that keeps track of the attachments’ location and operating hours. It is connected to the cloud based platform ‘My Epiroc’, which gives notifications on maintenance, creates task lists and provides an overview of the entire fleet. HATCON is available as both factory mounted and as a retrofit kit for Epiroc and erkat drum cutters.

Maintenance notifications and wear part alerts are not the only features that will help increase tool uptime and efficiency. “HATCON provides a new level of control. You’ll always know where your tools are, what they do, when they need service or if any tool is operating longer than the other. And with ‘My Epiroc’, everything from scheduling services to identifying faults and find new solutions will be much faster and easier,” says Torsten Ahr, vice president marketing Hydraulic

Attachment Tools Epiroc. Additionally, knowing the location of each tool is also an effective anti-theft measure.

Also new from Epiroc this year is the ‘Pro’ bracket for transverse drum cutters. This fixed bracket improves the protection level of the hoses when working in confined and limited visibility areas without compromising

quality and performance. The bracket ensures better hose guidance, which results in less mechanical strain and enhanced protection on sites with reduced visibility (tunnels, underwater etc.). The rugged closed box design prevents any demolished material from falling on to the engine cover. The ‘Pro’ bracket comes with an optional water spraying system for dust control during demolition, tunnel and canal construction. Depending on the application at hand, the customer now has the option to choose between a rotating or static support bracket.

**[www.epiroc.com](http://www.epiroc.com)**



## **MB machines shine on infrastructure projects in Europe**

Drum cutters from Italy based MB Crusher have been recently used to great success on a few infrastructure projects in Europe. When the historic Augustusbrücke bridge over the Elbe river in Dresden was due for renovation, the contractor sought an attachment that that would not cause any damage to the 18th century structure and would fit the machine already onsite, a Liebherr 918 excavator. To this end, MB Crusher specialists recommended an MB-R800 drum cutter,



## THE ART OF SURFACE PREPARATION

BLASTRAC IS THE LEADING INTERNATIONAL DEVELOPER AND MANUFACTURER OF SURFACE PREPARATION EQUIPMENT



**SHOT BLASTING**  
TO CLEAN AND RETEXTURE  
CONCRETE OR ASPHALT



**STEEL BLASTING**  
TO REMOVE COATINGS, RUST & PAINT  
FROM STEEL SURFACES



**GRINDING**  
FOR GRINDING AND POLISHING  
LARGE FLOORS AND OTHER SURFACES



**SCARIFIERS**  
TO LEVEL LARGE SURFACES OR  
REMOVE THICK COATINGS



**FLOOR STRIPPERS**  
FOR THE REMOVAL OF FLOOR  
COVERINGS



**DUST COLLECTORS**  
TO WORK IN A SAFE & DUST FREE  
ENVIRONMENT





tantly, added a new 7,500m<sup>2</sup> building to its flagship manufacturing facility near Bologna. A warehouse with high storage capacity, it allows the Italian company to improve delivery times and to respond to market requirements in a more efficient manner.

Simex had scheduled for release at SaMoTer (which has since been rescheduled to later this year) the new TFC 400 and TFC 600 double drum cutters. Designed for 6t to 10t and 9t to 12t excavators respectively, the TFC 400 and TFC 600 are of the continuous rotation type, which ensures smooth and even milling. With a cutting force of 18.5kN, the TFC 400 is ideal for small sized excavation

tasks, profiling of concrete surfaces and landscaping. The more powerful TFC 600 (boasting a cutting force of 24.5kN) is designed for heavier duty applications such as milling off deteriorated concrete structures in walls and tunnel roofs, profiling of cut off walls, trenching and laying of aqueduct and sewer pipes. The TFC 400 has already been recognised with the SaMoTer2020 'International Innovation Award' in the attachments category.

[www.simex.it](http://www.simex.it)

#### Rockwheel focuses on optimal pick layout

Germany based Rokla – one of the pioneers and trend-setters in the drum cutter industry – markets its products under the brand name 'Rockwheel', has recently focused on pick layout to achieve rapid, precise and smooth cutting. According to the German manufacturer, an optimal layout of picks on the drums results in less stalling of the cutter head, more continuous cutting and ultimately higher performance. For cutting exceptionally hard materials, a special demolition drum is recommended. It features a helical depth limiter to prevent over cutting and reduce vibrations. Another trademark feature of Rockwheel drum cutters is that they only need two hydraulic connections, with no drain



line required. The special valve construction serves to protect the hydraulic motor. The attachments' compact design reduces stress on the excavator boom and ensures operational stability.

[www.rockwheel.com](http://www.rockwheel.com)

#### Kinshofer rebrands its drum cutter range

Kinshofer Group, a German based heavy hitter in crane and excavator attachments, is currently in the process of rebranding its range of drum cutters. Formerly known as the 'WS' series, from now on, every cutter in the nine model range will be prefixed by the name 'KDC' with the model number at the end denoting the maximum operating weight of the carrier it fits. Driven by high torque motors, the KDC cutters feature modular construction and robust spur gearing with a gear reduction to increase cutting force. The attachments are also suited for underwater operation of up to 25m deep thanks to the heavy duty sealing system. The hydraulic motor can be adjusted to the excavator's hydraulic circuit capacity. Quick and easy exchange of wear parts reduces downtime. The optional 360° rotation function allows exact positioning in corners, on walls and other vertical surfaces for more accurate contouring. The optimised arrangement of picks ensures a high loosening performance and low wear. Three drum versions are available: the excavating version for cutting soft to medium hard rock, the profiling version for shaping and levelling soft to medium hard rock, and the demolition version for cutting medium-hard to hard rocks and concrete. Four pick variants allow users to achieve optimum performance on different materials: standard pick is recommended for soft to medium hard rocks such as argillite and asphalt and heavy-duty pick for medium-hard to very hard rocks. The wear protected pick is recommended for very abrasive rocks like sandstone and furnace gravel, and wood pick for stumping and landscaping applications.

[www.kinshofer.com](http://www.kinshofer.com)

Another case study, this time in Corsica, involved the construction of a 450m suspended footbridge, 5m above sea level. Located on a narrow cliff between the sea and the land with very little room for manoeuvre, the construction site itself represented the biggest challenge. MB Crusher solved it by advising the customer to use a combination of a Bobcat E85 midi excavator with a MB-R500 drum cutter with a rotation kit. Additionally, in Witzeeze, Germany, a contractor was tasked to remove concrete walls of a bridge and some boulders at the bottom of a river, 1.5m deep, to widen the riverbed. A MB-R700 unit passed the test with flying colours.

[www.mbcruiser.com](http://www.mbcruiser.com)

#### Simex expands production facility and receives innovation award for the TFC 400 drum cutter

2019 turned out to be a very successful year for Italy based Simex. The manufacturer strengthened its sales network, developed new attachments and, most impor-





# TOUGHEST RAIL CUTTER ON THE MARKET



## German premiere of the PC4504CE 'bump grinder' exceeds all expectations

In autumn 2019, a total of 52,000 m<sup>2</sup> of concrete pavement was ground off the A8 motorway between the Dasing and Dachau/Fürstenfeldbruck junctions in order to improve the grip of the surface. The work was carried out by Silco Tec Umweltschutzsysteme GmbH, which was able to complete the entire grinding work within the specified construction time of just six weeks. For this job, the PC4504CE bump grinder was used for the very first time in Germany. This is a self-propelled machine for the surface treatment of asphalt and concrete, originally produced by the American Tyrolit subsidiary Diamond Products Ltd. In order to meet the legal requirements and directives of the European market, the American original was adapted in advance to the local conditions in close cooperation between Tyrolit and Lissmac Maschinenbau GmbH.

All grinding work was carried out at night while the roadway was in operation during the day, with some lanes being temporarily closed. During the cutting, the CE certified PC4504CE then went to work. The 9m long machine has a 1.27m wide blade shaft, which was specially equipped for the project with a total of 245 BGX-C3 'Premium' diamond saw blades featuring TGD technology with a diameter of 485mm. This resulted in the delivery of an optimal grinding pattern with clean cut edges. The slurry extraction system also worked flawlessly, which meant that the usual and time

consuming cleaning of the road surface using a sweeper was not necessary.

The special highlight, however, was the traverse speed, which achieved up to 14m/min when the blade shaft was fully loaded and thus exceeded all expectations, despite the strength of the concrete surface. As a result, Silco Tec Umweltschutzsysteme GmbH not only made extremely rapid progress, but the project was actually completed even faster than originally planned.







**NDA'S ANNUAL SHOW IS A TRUE HIT IN THE**

# capital of the Lone Star State

***The National Demolition Association rolled out a true Texas welcome to nearly 1,000 members, vendors, and guests at Demolition Austin, the 2020 edition of its annual Expo and conference.***

**T**he good turnout for the event, held just two weeks before Conexpo/Conagg, reflected both an outstanding line up of activities and presentations, as well as the overall good health of the demolition industry. “There’s good energy here,” observed NDA president Christopher Godek, who is also the owner of New England Yankee Construction LLC of Wallingford, Conn. “The economy is good, and contractors are busy.”

Demolition Austin started with a bang on Sunday with its ‘Live DEMOLition’ event, an outdoor exhibition of demolition and construction machinery held at Texas Disposal System’s expansive waste processing facility and landfill in nearby Creedmoor. The TDS site also encompasses a privately owned exotic wildlife ranch, but the giraffes, emus and elands paid their visitors little mind, leaving the spotlight to the big equipment. Manufacturers on hand in the demonstration area included Arden Equipment, Brokk, Caterpillar, Kobelco, Komatsu, Liebherr, LiuGong and Volvo CE, as well as attachment providers such as Company Wrench, Epiroc, Genesis,

LaBounty, Husqvarna, Okada America, Steelwrist, and OilQuick/ShearCore.

The official opening of Demolition Austin was held later on the evening of the first day, with a ribbon

cutting ceremony and Expo opening reception at the Austin Convention Center. This would be the hub of activity for the next few days, with 84 exhibitors on hand to share their latest products and, perhaps more importantly, gain insights from current and prospective customers. “Our relationship with manufacturers is one of the strengths of our industry,” said Godek. “They do a great job of listening to members about what they need out of machines. We thank them for being here, and for their ongoing collaboration.”

Compared with Conexpo/Conagg and other larger shows with multiple manufacturers competing for attendees’ attention, Demolition Austin provided a more intimate environment for discussions, particularly for those companies looking to raise their profile in the North American market. “We’re glad we’re here,” said Mani Iyer, president of LiuGong North America, which had some of its larger pieces of equipment operating at the Live DEMOLition event. Iyer observed that members who took advantage of the opportunity to take the machines’ controls were impressed with the



**NEW**

- ▶ Construction Material
- ▶ Reinforced Concrete
- ▶ Granite

**+ CAST IRON  
METAL IRON**



# **INCISOR**

**Carbodium INCISOR.02**

***Gets even better  
with INCISOR.02***

- ▶ 10 mm Full Diamond Height
- ▶ Tear drop segments for less friction
- ▶ Notoriously Successful Incisor Design
- ▶ Extremely Safe and Reliable
- ▶ The Global Solution in Dry Cutting



**Your global solution manufacturer**





US National Demolition Association's President Christopher Godek.



ease of operation and ruggedness. He believes these and other features will help LiuGong compete in what is already a crowded equipment market. "We plan to open a manufacturing plant in Wisconsin, and already have many research and development centers and joint venture relationships with component manufactures." Iyer added that even with uncertainties such as the US election and other factors that could alter the construction market the company has planned well for the future.

#### Lessons to learn

Demolition Austin was also about learning, with educational offerings ranging from a 'boot camp' for aspiring superintendents and foremen. These included navigating the tricky, often contentious challenges of succession planning for family owned businesses; an increasingly widespread challenge in the construction industry as first and second generation company leaders contemplate retirement. NDA's famed 'quick hit' speed learning presentations covered topics such as the foundations of demolition management, regulatory and market updates, use of NDA's safety app, and several

others. Safety was a pervasive topic on the education side, with presentations from representatives of OSHA and Texas Mutual Insurance Company.

One of Demolition Austin's many highlights was Monday's keynote address by workforce strategist and management trend spotter Seth Mattison. Although



# Hydrodemolition **advantages**

with Aqua Cutter<sup>®</sup> robots

**25X FASTER**

THAN HAND HELD  
JACKHAMMERS AND

**3X QUIETER**

**VERSATILE  
APPLICATIONS**

**UP TO  
1,5 M<sup>3</sup>**  
PER HOUR

**APPROVED FOR  
EN 1504**  
EUROPEAN STANDARDS

**LESS INTERFERENCE OF  
INFRASTRUCTURE**

ELIMINATES  
**MICRO  
FRACTURES**

**VIRTUALLY  
ELIMINATES**

SILICA DUST EXPOSURE

**UP TO 3X  
EXTENDED LIFE**  
CONCRETE REPAIRS

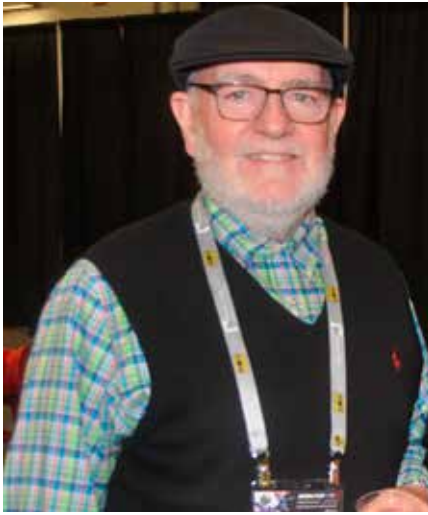
**30%  
LABOUR  
SAVINGS**

**TOTAL CONTROL  
UP TO 3000 BAR**  
FOR ANY DEPTH

**REBAR  
CLEANED**  
WITHOUT DAMAGE

**SUPERIOR  
SURFACE BONDING**  
CLEANS AND DESCALES  
REBARS IN ONE PASS





his career as an advisor on key shifts in talent, leadership, and the future of work, has taken him around the world, Mattison is no stranger to physical work having grown up on a fourth generation family farm in southern Minnesota. During his address, Mattison emphasised that while many of the industry's older members literally and figuratively grew up in organisations dominated by hierarchical models, today's workforce is more attuned to networks with multiple ongoing and ad hoc relationships and lines of communication.

While neither model is inherently right or wrong, businesses need to undertake 'shifts' in order to strike the optimum balance between the two so that they can create a more engaged culture better aligned with the needs of the current and future economy. Technology is often a convenient starting point for many firms, but the most important shift may be in the customer and

employee experience, which Mattison stated mirror each other. That means showing employees that they are truly valued and cared about, not simply names on a pay slip. "That was one of the biggest takeaways for me," Godek said. "We get to go out and do amazing things in our industry. It's nice to hear that it's ok to tell your workers you care about them."

The busy day at Demolition Austin wrapped up appropriately with a 'Toast to Texas' reception at the nearby Bangers Sausage House and Beer Garden. The event was a mixer in every sense of the word, with lots of networking, dozens of craft beers on tap, tasty Texas food, and a local band that attracted no shortage of dancers. As the good times echoed into the night and into the next day's final activities (NDA's annual awards banquet and Demolition Hall of Fame induction) thoughts were already turning back to the working world and what the remainder of 2020

holds for the industry. "History would tell us it has to slow down," Godek said of the current decade long construction industry boom. "Aside from low scrap prices, which are usually up in big economy, our members seem to be in good shape. We'll just have to see what happens."

In the near future, Godek says NDA will continue to promote industry manufacturer collaboration, finalise a formal alliance with OSHA, and encourage certification and professional development among its members. Harkening back to Mattison's keynote, he noted that providing employees with opportunities to learn and grow is a key element in building stronger, more resilient company cultures. "One of most important things is to feel like you belong. And the inherent nature of family owned businesses sometimes makes that difficult to convey. We hope the ideas we provide can help change that."





HPW-DUST HIGH PRESSURE DUST SUPPRESSION

POWERED BY HYDRAULICS



**DYNASET HPW-DUST**  
**HIGH PRESSURE DUST SUPPRESSION**

#### HYDRAULIC EQUIPMENT FOR MOBILE MACHINERY

GENERATORS  
VARIABLE GENERATORS  
WELDING GENERATORS  
MAGNET GENERATORS  
MAGNETS  
INSTALLATION VALVES

POWER WASHERS  
STREET WASHING UNITS  
PIPE CLEANING UNITS  
DUST SUPPRESSION  
DRILLING FLUID PUMPS  
FIRE FIGHTING SYSTEM

AIR COMPRESSORS  
BIN WASHING SYSTEM  
POWER BOOSTERS  
POWER TAKE-OFF  
VIBRAS  
ETC.



DYNASET.COM



# CONEXPO/CONAGG ENDS ONE DAY EARLIER

***The Las Vegas exhibition was probably the last trade show that managed to take place before Covid-19 brought the world to a halt. It was however still forced to end one day earlier due to US border closures. Despite a tough challenge due to the Corona virus, the show turned out to be rather good, with many new developments and a lot of business taking place.***

**T**he majority of exhibitor staff was already on the show grounds of the Las Vegas Convention Centre when the outbreak of the Corona virus took hold in China and also started to increase in Europe and USA. Some exhibitors cancelled their participation, such as Volvo CE, but most of carried on.

## Escaping the US

However, in the last couple of days of the show, many visitors decided to take an earlier plane home due to rumours that several countries would be closing their airspace and airline companies started to cancel flights. The last day of the show was also cancelled due to Don-

ald Trump's speech about closing the borders. Besides the global health concerns, the show turned out a rather strong showing. Registrations for the show totalled 130,000 attendees who visited the 2,300+ exhibitors who showed their wares on more than 250,000m<sup>2</sup> of exhibition space. There was a lot of new equipment





**LISSMAC**  
CONSTRUCTION TECHNOLOGY

## PROFESSIONAL FLOOR SAWS

LISSMAC Maschinenbau GmbH  
Lanzstraße 4  
88410 Bad Wurzach, Germany  
Phone +49 7564 307-0  
lissmac@lissmac.com  
www.lissmac.com



**ANTRAQUIP<sup>®</sup>** CORP  
Experienced, Innovative & Reliable  
**HIGH PERFORMANCE, DELIVERED**

ROCK CUTTING

CONCRETE REMOVAL

Proudly Made in the USA

FOR MORE INFORMATION CALL +1 (301) 665-1165 or visit [www.antraquip.net](http://www.antraquip.net)

Follow us and Stay Updated  
[facebook.com/Antraquip](https://facebook.com/Antraquip)

## THE ULTIMATE DEMOLITION CONTRACTOR'S ATTACHMENT

CONTROLLED DEMOLITION • REINFORCED CONCRETE CUTTING • MAKING THE AQ DEMOLITION SERIES THE ULTIMATE ATTACHMENT





[www.npke.eu](http://www.npke.eu)

# NPK®

The **NPK** trademark  
has become a symbol for  
quality products worldwide.

Read more news and reports at:

# [www.pdworld.com](http://www.pdworld.com)

## DUST SUPPRESSION SYSTEMS

website: [www.wlpdust.com](http://www.wlpdust.com) e-mail: [info@wlpdust.com](mailto:info@wlpdust.com)



# WLP

ET  
The New  
Paradigm for  
Internal  
Disinfection





and tools launched during the show and here are some examples of these developments related to the demolition, recycling and concrete cutting industries.

#### The cream of manufacturers

Several of the large excavator manufacturers showed their latest developments in high reach and heavy duty

demolition excavators, including Caterpillar, Doosan, Komatsu, Sennebogen, Liebherr, Kobelco and Hitachi. Brokk showed its latest robots and attachments from Darda as well as the brand new dust suppression system. At the same booth, Aquajet Systems showed the latest hydrodemolition robots and attachments. Bobcat launched a number of products including small

articulated loaders, electric excavators and compact track loaders and skid steers, with Kubota also launching new skid steers.

Allu premiered its new demolition and quarrying range of crushers, Antraquip showed its latest hydraulic rotating cutters, road headers and concrete saw attachments. Avant Tecno showcased new machines

**MB**<sup>®</sup>

THE CRUSHING EVOLUTION

BORN TO

**SAVE MONEY AND TIME**

DDMBRANDING.COM

▶ SCAN & PLAY

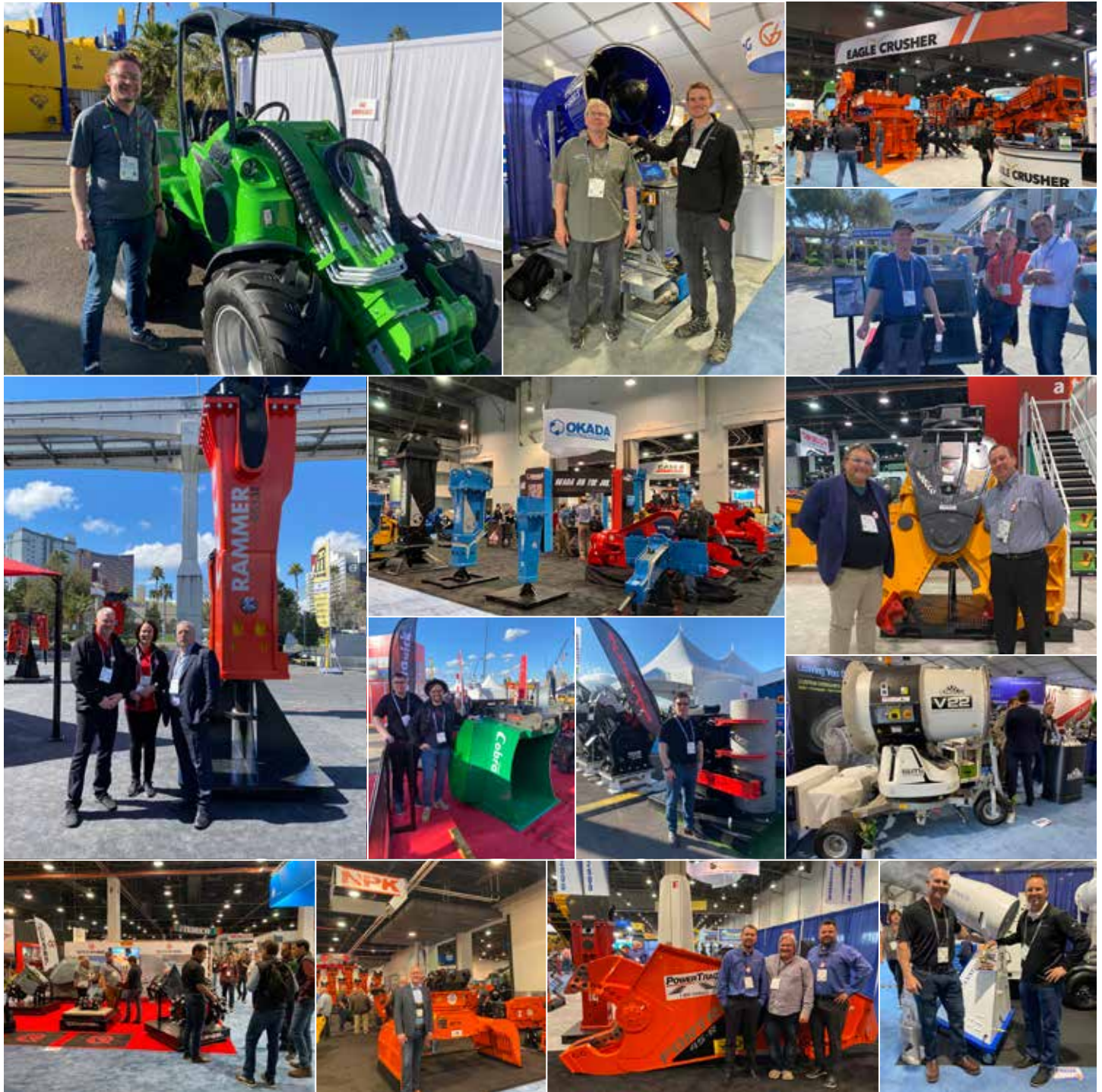
info@mbcrusher.com

**MBCRUSHER.COM**

**CRUSHER BUCKET**

**SHAFTS SCREENER**





and attachments including the new electric Avant e6, new Avant 423, 523, 530 and the new stump grinder attachment. Cams, the mobile crusher manufacturer from Italy, showed the new UTM 1500-3 in a North American version. Other crusher and screener brands at the show were Rubble Master, Eagle Crusher, McCloskey and Nakayama Iron Works to mention but a few.

OilQuick, Steelwrist, Rototilt and Engcon showed their latest products in terms of fully automatic quick couplers and quick hitches. Hidromek launched, among other products, its new wheel loaders. Husqvarna exhibited at Conexpo together with HTC following on from it exhibiting at World of Concrete. Quite a number of demolition and recycling attachment manufacturers

exhibited in Las Vegas, with Epiroc showing two new hydraulic concrete crushers from the CB line. Other players included Trevi Benne, VTN Europe, Everdigm, Genesis, Indeco, Cangini Benne, NPK, Cat Work Tools, Kinshofer, Magnum Attachments, Montabert, National Attachments, Okada and Rammer. In addition to Allu, MB Crusher and Remu showed their latest bucket crusher/screening developments.

Conexpo/Conagg is normally not a show for concrete cutting and concrete floor grinding equipment, with manufacturers from the industry mainly gathering at World of Concrete. However, there were quite a number of diamond tool suppliers exhibiting including Diamond Blade Warehouse, Diamond Chain

Company and Diamond Speed Products. ICS Blount also exhibited its latest developments in power cutters and chain saws, including the Pentruder range. As well as Husqvarna and HTC, Hilti also exhibited, as did concrete floor grinding machinery and tool manufacturer Superabrasive. The latter showed its Lavina series and its other latest developments including new grinders, vacuums and ride on power trowels.

All of this meant that despite all the issues involved with the Covid-19 virus, Conexpo/Conagg 2020 turned out 'ok' with a fair amount of business being conducted on the show grounds. The next show will take place 14-18 March 2023.

**[www.conexpoconagg.com](http://www.conexpoconagg.com)**





## RRC-SERIES

**FAST **CYCLE** TIMES**  
**AND INCREDIBLE CUTTING POWER**  
**GUARANTEE HIGH PRODUCTIVITY**



### **Power**

The RRC will process tonnes of rail in the blink of an eye



### **Convenience**

Unique jaw design, easily to manoeuvre



### **Material**

Heavy duty construction built of high performance structural steel



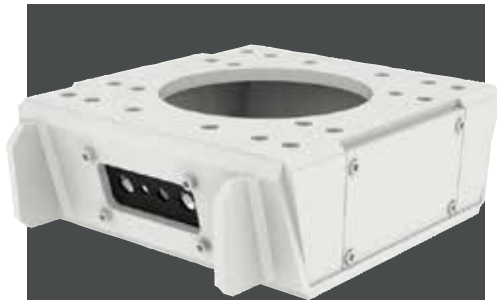
### **Modern**

Oversized pivot, guarantees maximum stability



**Curious about our full range?** Discover our products on [www.rotar.com](http://www.rotar.com)





## ERKAT 'PRO' BRACKET

erkat is known for its robust special cutting units for excavators and skid steer loaders, which are manufactured to what are said to be the highest quality standards in Germany. Now as part of Epiroc, the company's mission is still to offer its customers high quality products and services, thereby contributing to high efficiency and sustainable growth. Additionally, the company is more than fulfilling its commitment to innovative development with the launch of its new immediate bracket for consistent efficiency with increased investment protection.

erkat previously impressed its customers with its supporting console that can be rotated 360°. This enables the optimal positioning of the drum cutter in the area of use providing extremely precise yet flexible handling. The company's new rigid 'Pro' bracket further offers optimised protection of the hoses during work in confined areas and areas with limited visibility combined with consistent quality and performance. "erkat can offer both dynamic and rigid," explains Christoph Goebel, drum cutter product and business development manager. "We are thus remaining true to our concept of constant further development which has been in place for over twenty years."

With the development of the new Pro bracket, erkat has shown both its versatility and customer focus. While the tried and tested 360° rotating bracket continues to impress with its flexibility and broad range, the static bracket primarily offers additional protection of the customer's investment. For optimised hose guidance the hydraulic hoses run directly along the excavator arm and are fed out to the back, in the centre of the extension arm protection. This means that they are subjected to significantly less mechanical strain, do not cross each other and are better protected especially during work with minimal visual contact with the drum cutter (e.g. during trenching, close to walls, in tunnels or in water). The robust design, in the form of a closed box, prevents the demolition material from falling onto the engine cover from above.

Thanks to its extremely flexible usage options, the Pro bracket underlines the flexible use of the ER drum cutter range. Compatible with the models ER 650 to ER 2000, the rigid bracket provides an option for every application. The Pro bracket is offered with an optional water spraying system to meet the ever increasing requirements for combating particulate matter during demolition work, tunnel and channel construction. The installation of an optional additional valve enables the overflow oil line to be combined so that the drum cutter can be connected to the hammer circuit of the excavator with just two hoses. The customer is able to select whether to use a rotating or static support bracket.



## TWO NEW CB 'CONCRETE BUSTERS'

Epiroc is adding two new models for heavier carriers to its popular CB 'Concrete Buster' range. The CB 5500 and CB 7500 are designed for carriers in the 50t to 85t weight class. Due to their comparatively light weight, CB Concrete Busters are effective choices for use with high reach or long front carriers for applications with highly abrasive material and low level of visibility in operation. They are also suitable where noise is an issue and they can be used in residential areas where hydraulic breakers are not permitted.

As many construction and demolition contractors worldwide have discovered, CB Concrete Busters, with their wide jaw openings and high cracking forces, are ideal for demolishing thick foundation walls, making light work of cracking girders and heavy concrete at extreme heights. They are equipped with two powerful hydraulic cylinders which deliver virtually continuous closing force for maximum productivity. The hydraulic cylinders are fully protected by piston rod guards, with an integrated speed valve providing faster working cycles.

Offering impressive cracking forces of up to 190t depending on the model, CB Concrete Busters are equipped with two independently moving jaws that eliminate displacement force, thus lowering stress levels, with cutting blades being both replaceable and reversible. A productive feature on all CB Concrete Busters is 360° endless hydraulic rotation, which allows precise handling and optimal positioning. If the cutter grips the material at an oblique angle a built in pressure relief valve allows a 'self-acting movement' that brings the cutter jaw into the ideal position. This valve effectively protects both the carrier and the cutter from potentially damaging reaction forces.

The new CB 5500 and CB 7500 models offer cracking forces of 150t and 190t respectively with jaw openings for the two models being 1,600mm and 1,800mm respectively. The complete CB range now comprises of six models with service weights from 320kg to 7,400kg, for carriers weighing from 2t to 85t.

## North American customers to benefit from new Conjet appointment

As the first step in Conjet AB's establishment in the United States and Canada, the company announces Tim Best as customer success manager. Tim Best has a long history of working in hydrodemolition, starting his career at Jet-Blast Hydrodemolition. Since then, he has held many positions within the industry, both as an operator and a supervisor. Tim also has experience with mechanical and electrical repairs of hydrodemolition robots and equipment, as well as application engineering involving some of the most complex, challenging hydrodemolition projects. Tim's most recent employment was as the hydrodemolition manager for the Canadian company, CanMar Contracting.

Robert Kreicberg, Conjet's CEO, stated: "Conjet sold the first hydrodemolition robot in North America in 1985, and today we have a vast installed base of robots and equipment in use. With Tim joining the company,

our focus is to further increase our service and support capability, including training, education and technical consulting for complex hydrodemolition projects. Our next step is to increase the availability of spare parts and accessories, all with the intention to make our customers even more successful and efficient in their daily use of Conjet's equipment. Tim's first day with Conjet was 6 April, 2020 and we are pleased to welcome him to the Conjet Team!"



# Sennebogen becomes member of EDA

Sennebogen has been synonymous with customer-specific mechanical engineering since 1952 and has successfully established itself as a leading global manufacturer in many areas of crane technology and demanding materials handling. The company combines tradition and innovation in a stable company structure with a history of organic growth. Its machines are developed and produced at three locations in Bavaria, as well as steel parts being manufactured in Hungary.

High quality and customer specific solutions have been the aspiration of the company from the very beginning.

In addition, the models it offers covers a wide range of different configurations and type of variants. Sennebogen offering now comprises of everything from small telescopic handlers and telehandlers to giant harbour cranes, crawler cranes, duty cycle cranes and draglines. This enables customers to choose from material handlers, for examples, with operating weights ranging from 17t to 420t.

Sennebogen now employs 1,600 people throughout its group of companies and has its own subsidiaries in the USA and Singapore. Thanks to its worldwide network of distributors, it can supply customers on all continents.



# Lavina power trowel

At World of Concrete 2020 Superabrasive, the manufacturer of Lavina, showcased its first Lavina power trowel - LP36, a 2,032mm ride on model, which is propane driven with a Kawasaki FX1000V engine, mechanical steering, yet weighs only 630 kg. The trowel is equipped with two 915mm pans and total of eight trowel shine tool holders, ready to take a variety of tools for grinding and polishing. The pan system with rotary tool holders and flexible foam offers a good balance providing even tool wear. The trowel also features continuously variable transmission providing optimum torque and speed during all phases of the finishing process. It also has a heavy duty shroud to protect walls from slurry, integrated wheel set for easy tool changes and LED lights and is set to be available for sale later this year.

[www.superabrasive.com](http://www.superabrasive.com)

# Rammer new member of EDA

Rammer is one of the most respected manufacturers of hydraulic hammers in the world, offering a wide range of powerful, productive and durable hydraulic attachments that are suitable for carriers in the 0.6t to 120t operating weight class. Today, their offering consists of hydraulic hammers, booms, pulverisers, cutter crushers, scrap shears and multiprocessors.

Divided into two lines, Rammer 'Excellence Line' and Rammer 'Performance Line' hydraulic hammers, Rammer's product offering is known for its innovation and reliability, offering leading power to weight features. The Rammer product selection is supported by a global network of dedicated distributors with immediate access to genuine Rammer parts and tools as well as

a wealth of operational knowledge and experience. This ensures that any Rammer customer's product continues to contribute to profitability throughout its lifetime.

Rammer's products are manufactured using state of the art ISO standard technology that consumes minimal electricity and recycles cutting fluids and metal chips. In addition, when breakers reach the end of their working life, more than 95% of the metal components can be recycled. Moreover, the protection of people and the environment is the first priority of Rammer. For this reason, the company ensures that it has a safe and secure workplace, with its operations, products and services having a minimal negative impact on the environment.

POWER

OKADA AIYON CORPORATION supplies a variety of attachments mounted on excavators and has been an innovator in the field for many years all over the world.

JAPAN

[www.okada-aiyon.com](http://www.okada-aiyon.com)

#1-18, Kaigan-dori, Minato-ku, Osaka 552-0022, Japan Tel +81-656-6576-1268 Fax +81-656-6576-1516 Email [sales@aiyon.co.jp](mailto:sales@aiyon.co.jp)



# COMMITMENT TO EFFICIENCY

SQ Auto Connection System

## Change tools in seconds

- Front Pin Lock - additional safety
- Improved flow characteristics
- Steel casted couplers and tiltrotators



**STEELWRIST**  
EARTHMOVING EFFICIENCY

[www.steelwrist.com](http://www.steelwrist.com)



INNOVATION | CREATION | MADE IN FRANCE

Concrete machines  
with a french touch!

✉ [contact@autourdubeton.com](mailto:contact@autourdubeton.com)

🌐 [www.autourdubeton.com](http://www.autourdubeton.com)



Bush-hammering Scoot





Steel dust shrouds (Ø90, 120, 155, 180)



Rubber dust shrouds (Ø125, 180)

FOLLOW US ON:

 **AU TOUR DU BÉTON**  **AU TOUR DU BÉTON**  **AU TOUR DU BÉTON**  **ATDB**



All of Epiroc's heavy hydraulic breakers feature the patented 'Intelligent Protection System' (IPS). Seamlessly combining Epiroc's 'AutoControl' and 'StartSelect' functions, this fully automated system provides simpler, more efficient and more economical operation than ever before.

AutoControl and StartSelect have been popular features on Epiroc hydraulic breakers for some years. AutoControl optimises breaker performance by automatically adjusting the piston stroke length whilst StartSelect system offers manual switching between two modes. 'AutoStart' mode enables easy positioning at the beginning of the breaking cycle, whilst in 'AutoStop' mode the breaker stops automatically to avoid blank firing at the end of the breaking cycle.

Now these functions are combined in Epiroc's Intelligent Protection System (IPS). IPS ensures that the hydraulic breaker always starts in the AutoStart mode. When the contact pressure between chisel and material increases, and AutoControl switches from a short piston stroke to a long piston stroke, IPS switches automatically to the AutoStop mode. When the chisel breaks through the material, the breaker automatically shuts off and prevents blank firing.

IPS makes the breaking process even simpler for the operator by automatically adapting the breaker's operating behaviour to any working condition. Uptime is higher since, with its fully automated functionality, IPS requires no operator intervention or reaction and thus there is no interruption of the working process. The system permits more accurate and significantly faster positioning of the breaker, thanks to the centring effect, and avoids blank firing that often results in tool damage. This also eliminates mechanical strain on the carrier and the life of all wear components is extended. The physical load on the operator is minimised as well.

The entire heavy breaker product range from HB 2000 to HB 10000, 'Dust' and 'ECO' version, are equipped with Intelligent Protection System (IPS).

## Atomised water mist dust suppression system

Brokk unveiled the Brokk 'Atomized Water Mist System' during Conexpo/Conagg 2020 which it has developed to help combat harmful silica dust and other airborne particles created by the demolition process.

Brokk's new dust suppression system produces atomised fog that effectively binds dust particles in the air while also providing ground level dust suppression. Additionally, the mist dissipates, rather than forming puddles, for a safer, cleaner jobsite. Available for all Brokk remote controlled demolition robots, the Atomized Water Mist System offers an ideal solution to mitigate hazardous dust in demolition applications such as concrete cutting.

"Safety has always been paramount for Brokk, which is why, for more than 40 years, our engineers have constantly produced machines, attachments and technologies that allow operators to step away from the most dangerous and backbreaking operations," said Martin Krupicka, president and CEO of the Brokk Group. "However, silica dust remained a concern because it is difficult to contain. Previous dust suppression methods helped, but we wanted to find a more efficient solution that optimised safety without the mess."

Health and safety organisations have identified silica dust as a significant hazard and have enacted regulations that limit the permissible exposure for workers in the

construction and demolition industry. Meeting these regulations has taken several forms on the jobsite. Some contractors choose to use spray systems, hoses, sprinklers, and water trucks to combat silica dust. However, these interventions are often inefficient and, in some cases, ineffective against crystallized silica dust. The problem stems from the size of the water droplets, which are much larger than the silica dust they are meant to trap. Silica particles range from 0.1 to 1,000 microns, while traditional methods produce water droplets that are 200 to 1,000 microns in size. The size and velocity of these larger droplets cause air and silica particles to flow around them in a phenomenon known as the 'slipstream effect'. Hose and water truck spray methods are the most inefficient since they produce the largest droplets, but even smaller on board systems produce large droplets that can deflect silica particles, which can then be breathed in.

Since silica particles are more likely to bond with water droplets of similar size, Brokk engineered its dust suppression system to produce 10 micron mist droplets. This creates a fog of atomised water that captures dust particles in the air and spreads along the ground for optimal dust suppression. The system is incorporated into the tool mounting instead of the tool itself as found in other systems, allowing operators to provide silica dust protection with any Brokk attachment, including

breakers, concrete crushers and drum cutters. A hydraulic water pump is attached to the machine and can be fed with a freshwater hose or water tank.

In addition to providing superior dust suppression, the Atomized Water Mist System requires less water than other methods (0.2l/min) making it significantly more economical and environmentally friendly than most other spray methods. This conservative use of water also eliminates the puddles and slurry left behind by alternative methods, reducing the need for cleaning at the end of the day and reducing slips and falls, ultimately resulting in a safer, more efficient jobsite.



## EPIROC INTRODUCES 'HATCON'

Hatcon is a remote monitoring device for breakers and drum cutters that keeps track of location and operating hours to improve efficiency and safety. It works with the cloud based platform 'My Epiroc' which provides customers with notifications about service, creates task lists and provides an overview of the entire fleet. All the data is presented in a straightforward way to simplify both everyday duties and long term decisions.

Hatcon is available factory mounted or as a retrofit kit for Epiroc premium range breakers and drum cutters. Once connected, the system monitors every individual tool and keeps customers updated via My Epiroc. Notifications about service and wear part alerts are just a few of the features that will help increase efficiency. "Hatcon provides a new level of control. You'll always know where your tools are, what they do, when they need service or if any tool is running more than the other: it basically keeps you ahead. And with My Epiroc, everything from

scheduling services to identifying faults and find new solutions will be much faster and easier. This information will not only help creating a smoother workflow with less downtime, it can also be vital in reaching overall business goals," says Torsten Ahr, vice president marketing, Hydraulic Attachment Tools.

With data available regardless of device even offline, everyone from operators to fleet managers will have a more comprehensive view and be able to take smarter decisions. Since the data is also shared with Epiroc, the company says that it will enable it to provide better service, for instance when shipping wear parts just in time for a scheduled maintenance stop. For larger fleets with complex logistics, the GPS function is a major asset as through knowing the location of every tool it

provides a benefit to customers as an anti-theft system. "We have been longing to provide this service and I'm confident it will be very valuable for our customers and for us. By adding HATCON to our offer we want to strengthen your (customer) business and help you protect your investment," concludes Torsten Ahr.







Let's design  
a better world.

From new development models of the circular economy to technological solutions for the management and protection of resources: an international platform to foster the growth of an innovative entrepreneurial ecosystem and help territories to create a more sustainable future.

**ECOMONDO**  
THE GREEN TECHNOLOGY EXPO

**3 - 6  
NOV.  
2020**

RIMINI  
EXHIBITION  
CENTRE, ITALY

Organised by

**ITALIAN  
EXHIBITION  
GROUP**  
Providing the future



In collaboration with



Simultaneous with

**KEY ENERGY**  
THE RENEWABLE ENERGY EXPO



[ecomondo.com](http://ecomondo.com)

For info and request for complimentary tickets please contact: [helpdeskrn@iegexpo.it](mailto:helpdeskrn@iegexpo.it)

Artem Kondratyev, the general manager and creative force behind the Russian Demolition Forum.



'WIND OF CHANGE' BLOWS THROUGH THE

# Russian demolition industry

***Otto von Bismarck, the first chancellor of a united Germany and an eloquent speaker famous for his witty laconic remarks, once said of the Russian cavalry, "they saddle up slow, but ride fast". That sums up the Russian character in a nutshell. We do tend to take our time in making a decision, but once our mind is made up there is no stopping us. I have been hearing people talking about the necessity of creating a demolition association in Russia since 2006 when I first joined the industry. For years, however, it remained little more than a palaver until a man came along who jumpstarted real change and organised the first ever Russian Demolition Forum. PDi's Andrei Bushmarin reports.***

**R**ussia is not only rich in natural resources; its main asset, wealth and treasure are its people - something that the Russian powers that be are yet to fully comprehend. Russians are intelligent, well-educated and hard-working and they always accomplish whatever task they set their mind to.

In this sense, Artem Kondratyev, the general manager and creative force behind the Russian Demolition Forum, is as Russian as it gets, the quintessential Russian.

## Russian go getter

Artem Kondratyev hails from Rostov-on-Don, the biggest port city located in the south of Russia. An alumnus of the Southern Federal University with degrees in economics and law, he moved to Saint Petersburg in 2016 where he became involved in the demolition business working for a major demolition company. Winning contracts is not easy anywhere, but in the Russian construction and demolition game it requires extra effort. A born go getter, Artem became a valuable member of the team and was soon appointed head of the Moscow divi-

sion. He represented the Russian demolition industry at the 10th World Demolition Summit in Dublin in 2018. It was in Dublin that he comprehended the benefits of working within the framework of a trade association and how sorely the Russian demolition community was lacking. From that moment on he decided to put his considerable energy into creating a unified platform for demolition professionals in Russia. A year and a half later, his vision materialised into the first ever Russian Demolition Forum.

## Exceeding expectations

The one day event, where PDi was the main media partner, took place on 5 February 2020 at the Korston Club Hotel in Moscow. The choice of venue was



The award-giving ceremony hosted by Elena Kelep - Mrs. Russia and Mrs. Universal Grand Prix 2019.





somewhat symbolic, given that the hotel is earmarked for demolition in the coming months. The turnout exceeded the organisers' wildest expectations, with some 110 delegates representing 60 companies attending the forum. As important as numbers are, it is the quality and status of the speakers and attendees that make all the difference in the end. And there was no shortage of top notch industry figures at the forum.

Francisco Cobo, the president of the European Demolition Association, kicked off the event with a speech extolling the virtues of being part of the association and presented Artem Kondratyev with an appreciation certificate for a job well done. He was followed by Jose Blanco, the EDA's secretary general, who delivered a

presentation dedicated to the latest trends in demolition, recycling and decontamination. Then seven speakers from Italy, the UK, Australia, the Netherlands, Finland and Serbia, all well-known and respected names in the global demolition community, presented selected case studies to the audience.

#### **Mission accomplished: association is shaping out**

The event's grand finale was the award ceremony for the best demolition projects. For over a year, Russian contractors were submitting entries for the Forum committee to evaluate. In the category 'Collaborative Demolition', the winners were 'Stroiexporesurs', 'Viva-Trans' and 'Crushmash Group'. 'Tehkno Digger' won the

'Residential Demolition' category. 'Ecosnos Group' was presented with the 'Industrial Demolition' award. In the category 'Best Environmental Practices', the winner was 'JBS Engineering'. 'AlexanderGRAD' took 'The Implosion Demolition' award, and 'Sfera Rezki' received the 'Non-destructive Demolition' trophy. The awards were presented to the winners by Elena Kelep, a model and singer/songwriter, and herself the holder of the Mrs. Russia and Mrs. Universal Grand Prix 2019 titles. However, the most important outcome of the Russian Demolition Forum was that on 6 February 2020, 25 demolition companies signed a 'Memorandum of Intent' aimed at creating Russia's Professional Demolition Association.

**[www.rusdemolition.ru](http://www.rusdemolition.ru)**



# TRANSFORMING YOUR WASTE.



## ALLU CRUSHER & ALLU TRANSFORMER FOR DEMOLITION WASTE .

Screen and separate fine materials from the demolition waste with ALLU Transformer screening bucket, and crush hard materials with ALLU Crusher.

Transform all your demolition waste; bricks, asphalt, wood etc. into recycable form. Less material to be transported to the landfill, more efficient utilization of waste materials!

**ALLU TRANSFORMER** – faster processes with ‘one step operation’ in screening, separating and loading.

**ALLU CRUSHER** – reliable crusher with no jamming, and quick adjustment to the required output specification.





Jamba Construction was tasked with demolishing the Belvedere Lava House.

**BUILDER FINDS ROBOTIC SOLUTION FOR HISTORIC**

# DEMOLITION PROJECT

**D**emolishing the abandoned structures and stabilising the landslide prone cliff face would require a creative contractor, with steep terrain and a narrow site ruling out the use of large excavators. Jamba Construction, a company with a reputation for unique and complicated projects, was tasked with finding a safe, efficient solution. Jamba chose to use robotic demolition from Brokk, which provided the hitting power needed with a much smaller footprint than traditional excavators, with its remote operation keeping workers out of harm's way.

## Up for the challenge

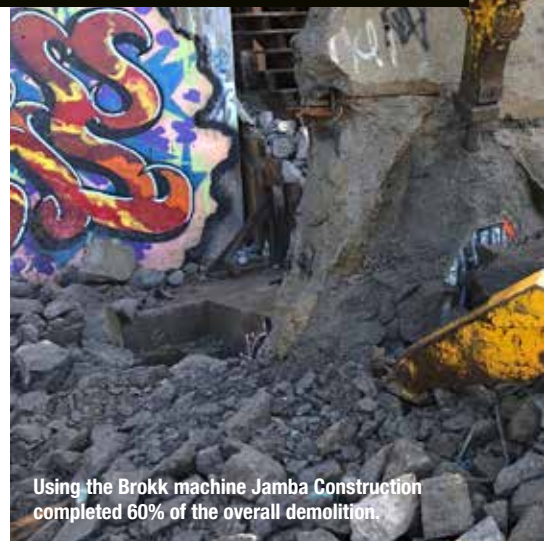
Jamba Construction arrived to begin demolition in early 2019. The award winning local company has 14 years of experience in high end home construction. "We gravitate toward projects that require us to be innovative and to try new things," said Mark Swanson, owner and president of Jamba Construction. "Over the years, that has resulted in a team of creative problem solvers and a whole host of service offerings I never would have expected. Small scale demolition has been part of the initial phase of several projects, but the Lava House presented us with something we'd never done before - a complex, large scale demolition on inhospitable terrain with practically no access. It required a brand new approach."

Jamba's first challenge was finding equipment that had the power to demolish reinforced concrete and lava

*Located near San Francisco Bay and the iconic Golden Gate Bridge, Belvedere's Lava House has proved iconic, but deterioration of the concrete and lava structures have led to increased concerns for public safety in recent years. This led in 2018 to the property's trustees deciding to work with Belvedere officials to remove the crumbling construction.*

but was small enough to manoeuvre on the site's steep terrain. "Access to the site was our biggest hurdle," Swanson said. "The property makes for an amazing view, but a bit of a logistical nightmare when you need to arrange for equipment. We had two choices: by land or by sea, and neither one of them would be easy. Everything was just too steep to bring in any type of heavy equipment."

To remove the large amount of debris Jamba contracted a landing craft to deliver a tracked loader with a grapple attachment and a ten wheel dump truck to the beach area of the site. Materials and debris were then removed over the water and across San Francisco Bay. The actual demolition would be bit more difficult, though. The landing craft was not large enough for the cranes or bigger excavators Jamba needed. Even if the company could land larger equipment, there was no way to traverse the steep terrain and gain access to the



Using the Brokk machine Jamba Construction completed 60% of the overall demolition.





Working in tandem with a 25t tow truck parked on the road, Jamba maneuvered the Brokk machine down the hillside.



The Brokk 160 machine provided the hitting power required using a SB202 breaker.

demolition site. The narrow waterfront and difficult currents would make it nearly impossible to moor a barge or platform.

Getting equipment to the site from land presented Jamba with another set of challenges that limited its equipment choices. Due to landslides and deterioration, there was no driveway or clear path to access the site preventing Jamba from simply driving in equipment. In the end, Jamba could only identify one section with the access and tie off points necessary to safely lower equipment. Everything else, including personal vehicles, had to be parked at the top of the cliff.

As to what type of equipment, Swanson comments, "We knew there had to be a solution out there. We were looking at mini excavators in late 2018 when we came

across Brokk on the World of Concrete website. It was perfect. Almost too good to be true." When he contacted Brokk's regional sales team, Swanson was happy to find the Brokk 160 remote controlled demolition machine could provide as much hitting power as a 4.5t excavator but only weighed 1.6t. The demolition robot's compact design was perfect for tackling the Lava House's narrow passages and complex architecture.

#### Over the Edge

Working in tandem with a 25t tow truck parked on the road, it took about two hours to manoeuvre the Brokk machine down the hillside. The remote controlled demolition machine was attached to the truck's powerful winch to keep it from tumbling down the steep incline. Standing safely on the road, the Brokk operator used the remote control to clear the machine's path as it descended. "The manoeuvrability of the Brokk machine really made the descent easier," Swanson said. "The articulation in the arm allowed the operator to put the breaker tip down and stabilise the machine if it was getting a little off balance on the slope. He was also able to break up any obstacles like roots, stumps or rocks that could cause it to tip. As we watched it move down the hill, we realised even if we had found a mini excavator with enough power, the Brokk gave us more flexibility."

With the path cleared, Jamba was able to lower additional equipment down to the jobsite including a Kubota SVL-75 high flow tracked loader with MB-L140 crusher bucket and Kubota KX040 9000lb mini excavator with demolition hammer. While Jamba's crew worked to clear paths and backfill areas of the landslide prone site to stabilise it, the Brokk operator hammered away at the main structures using a SB202 breaker. "For the most part, we let the Brokk machine handle the buildings while crews used mini excavators and handheld pneumatic tools to clear away smaller debris," Swanson said. "It worked out perfectly; it kept the crew and equipment away from the more dangerous demolition areas and we were able to get more done while the Brokk operator handled the heavy hitting."

In a month, the Brokk machine demolished 400m<sup>3</sup> of concrete and lava, completing 60% of the overall demolition. Using the Kubota loader and MB-L140 crusher bucket, Jamba crushed 300m<sup>3</sup> of concrete and lava for backfill to stabilise the site. With the completion of phase one, the Brokk 160 was demobilised from the site and winched back up the slope. In less than a year, Jamba Construction demolished over 500m<sup>3</sup> of concrete, lava, steel, wood and debris, with most material being recycled. "This project presented us with some exciting challenges," Swanson said. "It also gave us a chance try out new technologies. We're looking forward to more opportunities like this one."



Getting equipment to the site presented Jamba with a number of challenges.



# The solution on bridge, tunnel and road sites

Construction projects on bridges and major roads often have a big impact on motorists who are often faced with road closures and an increase in traffic congestion. While the work is carried out, city centres and major roads also suffer from congestion. The companies carrying out road works, road maintenance, excavation, renovation and trenching operations are well aware of the challenges they are faced with, including pressure to complete the work quickly and reopen the roads.

An example of the kind of work and problems experienced by construction companies was the renovation work required on the Augustusbrücke bridge over the Elbe river in Dresden. This involved the removal of the concrete which filled the arches and had caused structural damage. The contractor was seeking a solution that would be suitable for the machine already in use at the site - a Liebherr 918 excavator - and that would not cause any damage to the 18th century structure. MB Crusher provided the solution by recommending the use of an MB-R800 drum cutter (suitable for excavators between 10t and 22t).

Firstly, the MB drum cutter was used on the diagonal cement lines on the bridge to free up the expansion joints. This was the most challenging phase. However, the MB drum cutter was used without causing too many



vibrations or any damage to the structure. Following this phase, the drum cutter was used to remove some of the concrete that filled the arches of the bridge, grinding as far as 3m deep.

Also in Germany, but this time in Berlin, an old bridge over the busy Avus motorway needed to be completely demolished. One of the contractor's objectives was to allow the traffic to continue moving on the carriageways across the bridge. During the first phase large machines were used, after which two MB drum cutters were chosen: the MB-R800 drum cutter and the MB-R900 drum cutter (suitable for excavators between

19t and 35t) to remove the various layers of cement and tarmac and to complete the project.

Another German project, located in Witzeze, saw a company contracted to remove some of the concrete walls of a bridge and some of the rock found at a depth of between 1m - 1.5m at the bottom of the river to widen the river bed and increase water capacity. For this challenging operation, which is becoming increasingly frequent to prevent flood damage, the MB-R700 drum cutter was used. This tool is capable of operating underwater without damaging its hydraulic and mechanical systems (as with all the other MB drum cutters).



## NEW BREAKERS AND NEW PULVERISERS

Italian based company Promove now offers a complete range of demolition equipment which it aims to further expand in order to offer its customers more high performance and innovative solutions.

Promove has introduced new products and services designed to offer even more value to its customers. Amongst these are two new breakers: XP600 600kg and XP200 200kg for its hydraulic breakers series. The XP series boasts an energy recovery system, an anti-blank firing system, a power/ frequency automatic regulation system and an innovative smart valve with 'plug and play' that allows the breaker to be installed without having to adjust any settings on the excavator. The latter feature provides significant time and cost savings as well as eliminating future problems such as premature breakages due to extra flow. This system also allows the breaker to be moved to various machines, making it easier to rent equipment.

In recent years, Promove has focused on creating its products based on high quality construction using high quality materials to ensure longevity and to

significantly reduce maintenance costs. With this in mind, a three year extended warranty for small hammers has been introduced without limitations on hours and maintenance obligations. The company has also focused on developing what it says is one of the best and fastest sales and after sales services on the global market. This service is said to deliver commercial and technical responses within 8h and the sending of spare parts within 24h-48h.

### New range of pulverisers and crushers

Promove's new pulverisers are made entirely of Hardox 400, providing tough and marked resistance to abrasion, come as a single block between body and fixed claw, with large cylinders for greater power. They are equipped with a speed valve to maximise the work cycle, interchangeable teeth and plates and are said to provide an excellent quality / price ratio. The lower plate on the body has been designed to provide the pulveriser with a secure and stable grip on the work ground to more easily move debris and

non-crushable material. Furthermore, a new range of sorting crushers from 90kg up to 13t has been developed.

Also to be introduced are first of a new range CR800 rotating pulverisers. A complete range will soon be available boasting the following technical features such as being entirely made of Hardox 400; single block construction between the body and the fixed claw and the elimination of welds that weakens the structure. They also have a wide opening providing high breaking forces with an excellent closing / opening speed. Oversized pins have been used in order to provide longer operations in demanding working conditions. They are also protected by a system of bushings which provide minimum wear of the pins themselves.

Last but not least amongst Promove's new products are interchangeable jaws for its range of CP multiprocessors. All of these additions are part of Promove's ambition to strengthen its position in the secondary demolition and recycling market, with innovative ranges, offering high performance and lower operating costs.

# DURATIQ™

Engineered for you



8

6

5

## DURATIQ™

A floor grinding machine platform with innovations, features, solutions and details matching the clearly set requirements and expectations of professional users and specialists the world over. With the DURATIQ, HTC has set an entirely new standard for reliability, precision and control. A unique combination of intelligence and raw power. So you can focus on the floor.

[www.htc-floorsystems.com](http://www.htc-floorsystems.com)







## ALTERNATIVE DRAINAGE FROM DITCH DOCTOR

Things began to develop for Ditch Doctor many years ago when the mind set of society, especially those of the young growing up in the 1980's, started to change. People began to embrace the '3 R's', reducing, re-using and recycling materials as the new way things of getting things done.

Adam Fisher, president of Ditch Doctor, was one of those young at the time eagerly adapting the mantra of the 3 R's in a respectful and serious manner. He was lucky enough that he had a father in Gerald Fisher who made sure he was there to provide Adam with help in his dragline business. When it came to creating a drainage canal on marshland, Gerald provided guidance, embracing recycling and new methods of doing things. Adam once asked his father, "Once we dig this ditch and when it fills in, how do they clean it out?" His response was, "The same way we are doing it right now!"

This initially made little sense to Adam and it was several years later when he started in the excavation business working with his brother that he saw a need for such a machine to clean out ditches. In 2002, he started his own business specialising in drainage and dredging work. To facilitate cleaning, a prototype machine was built and tested for cleaning drainage canals: Ditch Doctor was born.

After using the machine and seeing the benefits instantly and over the following years, Adam knew he was onto something that would someday change the way things got done. With the 3 R's always in mind, he slowly developed the design into a robust machine that was highly functional and dependable. Several years later a new model was built. This time with 'fit and finished' in mind the unit was tested and soon went into production. Recently a unit was sold to Martin Drainage in Arthur, Ontario and is now operating in the area. "It's great to have other people in the industry see something new and adapt to change. Thank you John Martin," said Adam.

"Our fore fathers have created all this wonderful infrastructure for us here in Canada (and worldwide) and sometimes it seems we cannot afford to maintain it all. Ditch Doctor was built to maintain infrastructure using the 3 R's. We have two models available and models in stock now," added Adam.

Interested parties who wish to find out how Ditch Doctor can help them are advised to check out the company's website at [www.ditchdoctor.ca](http://www.ditchdoctor.ca). Adam is directly contactable in order to answer questions via email at: [info@ditchdoctor.ca](mailto:info@ditchdoctor.ca).



## WLP offers a solution to contain coronavirus

We all now live in a changed reality. This new reality reminds of a Hollywood horror movie come true. Covid-19 became the proverbial 'black swan' that effectively shut down the global economy, closed the borders and sent entire nations into lockdown. In Europe, Italy was initially the worst affected country. Despite unprecedented measures the Italian government has taken to curb the spread of coronavirus, the death toll keeps climbing, albeit now at a decreasing rate. WLP s.r.l., a dust control specialist based in Northern Italy, is doing its bit to combat the pandemic by offering a decontamination system that can considerably reduce the diffusion of the virus.

With severe lockdown measures in place, only businesses that have been classified as 'essential' are allowed to continue operating in Italy. WLP, a trendsetter in dust and odour control technology, has been granted such a status, not least thanks to its NCA (No Contaminated Area) remediation systems.

### NCA decontamination system

WLP began to design and build decontamination systems some four years ago, following a 6.2 Richter scale earthquake in central Italy on 24 August 2016. A great deal of livestock was killed by collapsing stables, causing a real threat of an epidemic. The situation was quickly resolved at the time, but it did prompt the WLP engineering team to look into decontamination issues. Two years later the Italian manufacturer came up with a solution called NCA, 'No Contaminated Area'. Designed to hinder the proliferation of dangerous bacteria

with the aid of non-toxic additives, a self-contained NCA system consists of an electric generator set, a large volume tank with decontamination solution and a spraying cannon or nebulizer. Thanks to the on board electronics and a radio controlled unit, the system can be operated in remote mode, which drastically reduces the risk of the operator being infected. Complete autonomy and the ability to treat large areas are further benefits of the WLP solution.

### Calling on 'Extra Terrestrial' force for help

Currently, the global situation is nothing short of a sci-fi disaster movie. In circumstances like these, the intervention of a higher force seems to be required. WLP has not only remained fully operational throughout the crisis, but in fact, has increased the production of decontamination systems. This has enabled the company to respond to the universal need for sanitising indoor environments such as offices, warehouses and manufacturing facilities by designing a brand new machine. Named 'ET', which stands both for 'Extreme Treatment' and 'Extra Terrestrial' (thanks to its somewhat outlandish design), this mobile system features a 70l tank with sanitising liquid, permitting an average run time of three hours. Also, the ET is equipped with a remote control unit, which allows users to operate it from a safe distance. As the coronavirus crisis worsens, demand for this machine is said to be growing exponentially worldwide. Within a space of just two weeks, WLP has supplied over 60 units to France, the UK, Malta, Egypt and Thailand.

[www.wlpdust.com](http://www.wlpdust.com)

# Cutting-edge connectivity. Done.

With the MoveSmart Technology, TYROLIT machines are connected to the Internet for the first time. More productivity, better planning and higher efficiency through construction site real-time data. For smart users.

Find out more at [www.tyrolit.com/movesmart](http://www.tyrolit.com/movesmart)



**MoveSmart**

TECHNOLOGY  
powered by ToolSense



Premium grinding tools since 1919  
[www.tyrolit.com](http://www.tyrolit.com)

**TYROLIT**





# HAMMER FX15000 THE BIGGEST HAMMER IN THE WORLD

WITH OUR  
PASSION  
ALWAYS AT  
YOUR  
SERVICE!



VIA OLEIFICI DELL'ITALIA MERIDIONALE, LOTTO G1, 70056 MOLFETTA BA, ITALY  
INFO@HAMMEREUROPE.COM  
(+39) 080.337.5317



[WWW.HAMMEREUROPE.COM](http://WWW.HAMMEREUROPE.COM)

WE SELL SOLUTIONS AND INNOVATIONS FOR DEMOLITION