



**Business**

**WALTER SUND NEW  
TYROLIT BUILDING  
PRODUCTS MANAGER  
FOR NORDIC REGION**

Page: 14

**Special Feature**  
**CORE BUSINESS  
INDEED**

Pages: 39-42

**Special Feature**

**QUICK COUPLERS  
FOR HEAVY DUTY  
APPLICATIONS**

Pages: 27-30

**Special Feature**  
**NEW HAND HELD  
EQUIPMENT**

Pages: 46-48

**Reports**

**MILWAUKEE'S  
PARADIGM SHIFT**

Pages: 50-51

# THE US MEGA SHOW CONEXPO-CON/AGG BACK AGAIN

Pages: 54-59

**Special Feature**

**NEW DRY  
CUTTING DIAMOND  
TOOLS FROM TYROLIT**

Page: 37

**Reports**

**HAMMER SET  
TO CONQUER  
THE WORLD**

Pages: 78-81





## RAMMER AT CONEXPO-CON / AGG 2020

Come and see us at  
Silver Lots 1 & 2 – S5249

# SUPERIOR FLEET MANAGEMENT

Our new Excellence Line hammers are now equipped with the first ever monitoring system for hydraulic hammers – RD3. This system gives you detailed information about the operating hours, service intervals and GPS location of your product. You can see all the data you need by logging into the My Fleet platform. RD3 improves your fleet management, makes your processes more efficient and improves your profitability.

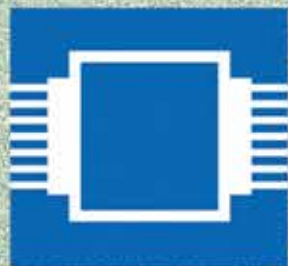
For more information visit [rammer.com/excellence](http://rammer.com/excellence)  
or contact your local Rammer dealer.

Sandvik Mining and Construction Oy / Lahti, Finland / [rammer@sandvik.com](mailto:rammer@sandvik.com) / [www.rammer.com](http://www.rammer.com)

Find us on @rammerhammer YouTube @rammerhammer

The Rammer logo, featuring the word 'Rammer' in a stylized, bold, red font with a white outline.





ONLY WIRE

**WIDECUT**

18:19



**BEYOND EXPECTATION  
ONLY WIRE!**



**Groove**



Ø15.0\*40 bpm

**Steel**



Ø10.2\*48 bpm

**Concrete**



Ø10.5\*40 bpm

**Finish**



Ø9.0\*48 bpm

[www.widecut.com](http://www.widecut.com)





Professional Demolition International Magazine

**Address:** P.O. Box 786,  
SE-191 27 Sollentuna, SWEDEN

**Visitors address:**  
Skillingevägen 14A, SE-192 71 Sollentuna, SWEDEN

**Phone:** +46 8 631 90 70

**E-mail:** info@pdworld.com

**Website:** www.pdworld.com

**ISSN Registration:** ISSN 1650-979X

## EDITORIAL STAFF

### Editor-in-Chief

Jan Hermansson, Jan.Hermansson@pdworld.com

### Assisting Editor-in-Chief

Anita do Rocio Hermansson,  
Anita.Hermansson@pdworld.com

**Editor:** Vitor Hermansson, vitor@pdworld.com

**Editor Europe:** Mikael Karlsson,

mikael.karlsson@pdworld.com

**Editor North & Central America**

Jim Parsons, jim.parsons@pdworld.com

**Editor South America**

Luiz Carlos Beraldo,  
luizcarlosberaldo@gmail.com

**Editor Russia & Eastern Europe**

Andrei Bushmarin,  
andrei.bushmarin@pdworld.com

**Editor Africa**

Kevin Mayhew,  
designmp@iafrica.com

## SALES OFFICES

### International Sales Director

Germany/Austria/Switzerland/UK & Ireland  
/BeneLux/Finland/France/Spain/Portugal and Italy

Andrei Bushmarin

Phone: +7 921 949 27 81

E-mail: andrei.bushmarin@pdworld.com

Sweden/Norway/Denmark/Liechtenstein/North

America/South America

André Hermansson

Phone: +46 (0)8 631 90 70, Mobile +46 (0)70 979 04 03

E-mail: andre@pdworld.com

Australia/New Zealand/Asia Pacific/Korea/Japan

and rest of the world:

Contact PDI editorial office in Sweden

Phone: +46 (0)8 631 90 70, Mobile +46 (0)70 979 04 03

E-mail: info@pdworld.com

### Publisher

Jan Hermansson

The magazine PDI, Professional Demolition International is published five times per year with a worldwide circulation of 10000 copies. The annual airmail subscription rate is US\$ 45. All subscription correspondence should be directed to: The subscription department, SCOP AB, P.O. Box 786, SE-191 27 Sollentuna, Sweden. PDI is mailed by second class postage. ©Copyright SCOP AB 2000-2020

Cover picture: Epiroc

PDI Magazine is a member of the following associations:



# CONTENTS

**PDI** • issue no. 1 January - February 2020 • Volume 20

## REGULARS

### Editorials

- 6 Welcome to Willingen!
- 8 The era of battery driven professional tools are here
- 10 EDA to support Serbian demolition industry with annual convention in Belgrade

### Business

- 6 Hilti achieve further sales growth
- Niklas Nillroth takes over CECE presidency
- 8 Maximus has become RM Dungannon
- Hyundai Construction Equipment names new managing director for Europe
- 10 Mecalac hires industry veteran
- New vice president of distribution and marketing for North America
- 12 EDA and EDI welcome IETS as a new member
- EDA welcomes new member
- Worldwide Distributor of the year
- Erenfred Pedersen A/S becomes new reseller for Scanmaskin in Denmark
- 14 New product management appointments
- New distributorship structure
- New Keestrack dealer for Lithuania
- Walter Sund appointed Tyrolit building products manager for the Nordic region
- New managing director

### Jobsite Report

- 18 IJ Lynn choose Epiroc kit
- Ahead of time with Doosan Excavators
- It's time for a larger Rockster impactor
- 20-22 Hydraram's HDS-718 in action in Russia
- 76 Fast and precise concrete cutting
- Russian aluminium producer relies on mobile Sennebogen material handlers
- 82 Epiroc HB 4100 hydraulic breakers
- €275M Lahti ring road landscape transformed with help from Allu

### News

- 16 Allu at Conexpo/Agg
- New wheel loader simulator training pack
- Prinroth at Conexpo/Agg 2020
- 24 Cat at Conexpo/Agg
- Hidromek at Samoter 2020
- 37 Eisenwaremesse to be held in Cologne
- New dry cutting diamond tools from Tyrolit
- 52 Cams UTM 1500-3
- Baier delivers state of the art dry core drilling
- AGP C18 brushless concrete saw and DM8P wet drilling motor



- 66 News from Husqvarna and HTC
- Cobra introduces screening bucket with OilQuick coupler for efficient working
- 70 'World Series' dust collector
- E1 technology from Hatz pioneers engine industry
- Which excavator is right for me?
- Tyrolit HRE410 ring saw
- 72 UK's first Bobcat 'Waste Expert' telescopic loader
- 85 TRS mobile metal separation for recyclers
- Hillhead announces further expansion
- 'PaveScan RDM 2.0'
- 86 Kemroc launches drum cutter attachments
- Promove XP3100
- Delete partnering the deCOmm project
- 89 Two new CB 'Concrete Busters'
- CSDA announces new executive director
- Dymatec introduces 'Cuttronic' drilling system

### Reports

- 50-51 Milwaukee's paradigm shift
- 61-62 Demolition work at the Mumbai Metro
- 64 Demolition in the outer archipelago of Norway
- 90 Russian demolition industry
- 92-94 Hammer set to conquer the world

### Shows

- 54-59 Conexpo/Conagg is back again
- 69 BeBoSa 4 and IACDS 25
- 74 SaMoTer 2020
- 78-81 Winds of wow in Vegas

## Special Features

- 27-30 Quick couplers for heavy duty applications
- 32-34 Crushing and screening attachments and buckets
- 39-42 Core business indeed
- 46-48 What's new in 'hand held'





THE RIGHT TOOL.  
FOR EVERY JOB



VISIT US AT BOOTH:  
**C20304**



# Welcome to Willingen!

Not only the best ski jumpers come once a year in Willingen, as every three years the north Hessian community becomes the venue for BeBoSa, the largest trade fair for the concrete drilling and sawing industry outside of bauma. This is where the best concrete drillers from Germany and all over the world meet; less to measure each other, rather to take a look at the latest technical developments in the industry and to maintain their personal network.

The industry meeting was initiated by the national association for concrete drilling and sawing Germany e.V. (FBS), with the fourth edition of BeBoSa being characterised by an increasing international appeal, both amongst exhibitors and visitors. This speaks for the quality of the event, which the IACDS also takes into account, with the event also being used to mark its 25th anniversary this year.

The International Association for Concrete Drilling and Sawing (IACDS) was founded 25 years ago by representatives from Germany, Austria, Switzerland, Japan and the USA. The goals from that time are still the goals of today: create a neutral forum, promote international exchange and get better together! Over the years the number of members has grown to eleven national associations and 16 manufacturers and other members. With India, the twelfth national association set to join the IACDS this year.

The 25th anniversary will be celebrated in the run up to BeBoSa on the evening of 25 March 2020 together with delegates from the professional associations from around the world at a gala dinner, where I hope to be able to greet as many of you as possible. The annual general meeting will take place on Thursday 26 March, and, for the first time, the IACDS will be represented at BeBoSa with its own stand in the foyer of the convention centre. Why not use your visit to meet

us in person as you will receive a warm welcome. With this in mind, I wish the event every success and interesting discussions among colleagues from all over the world.



**Michael Findeis, President of IACDS**



## Hilti achieve further sales growth

The Hilti Group sales grew by 4.3% during the 2019 business year to €5.5B. In local currencies growth was 6.3% against the previous year.

"2019 was another successful year for us with exclusively organic growth. The economic environment has become more volatile while global construction growth has noticeably slowed. Additionally, currencies largely displayed depreciation tendencies against the Swiss franc. Against this background we're satisfied with our growth level and are pleased that we gained additional market share," commented Hilti CEO Christoph Loos on the developments in the 2019 business year.

Hilti achieved an increase of 6.9% in local currencies in the Europe business region,

despite Brexit uncertainties and a substantial downturn of the construction economy in Scandinavia. North America continued to develop positively, advancing 7.3%. Significant growth was also achieved in Latin America (+8.5%), where the recovery in Brazil made a considerable contribution. In the Asia/Pacific region, the growth level of 4.3% was slowed by the difficult environments in both Hong Kong and South Korea. The situation in the Eastern Europe / Middle East / Africa region remained disparate (+3.7%), with Russia and the Eastern European markets driving growth while business remained difficult in the Gulf States and in Turkey due to ongoing political uncertainties.

[www.hilti.com](http://www.hilti.com)

## Niklas Nillroth takes over CECE presidency

As of 1 January 2020, Niklas Nillroth is the new president of the CECE, succeeding Enrico Prandini of UNACEA & Komatsu. The CECE presidency is a rotating position held for two consecutive years by each of the associations representing their respective member nations.

Niklas Nillroth chairs the Swedish Construction Equipment Association SACE and is vice president 'Sustainability & Public Affairs' of Volvo Construction Equipment. Within Volvo CE, Niklas has gained broad experience from management positions within several different areas, such as purchasing and supply management, product development, change and project management as well as general management.

"As the CECE president, I will devote particular attention to the issue of sustainability in construction. With a special focus on the push for emission reduction and the initiatives being put in place by authorities and the rest of the industry," said Nillroth. "What is still missing – and I want to focus on – are the pull factors making these technologies appealing and mainstream for client and users in the larger construction industry," he continued. Niklas will also continue the long term strategy of his predecessors to embrace the transition into the digital era by promoting

compatibility and inter-operability between products and processes. 'Enabling innovation' will also be the theme of this year's CECE Congress, which will be held in Stockholm from 7 to 9 October.

As president, Niklas Nillroth represents 1,200 construction equipment manufacturers in Europe. These companies generate €40B in yearly revenue and employ around 300,000 people overall and aims to facilitate the effective work of the CECE. "Several groups of dedicated CECE experts are actively collecting and sharing their knowledge to contribute to an informed decision making process at the EU level. Following on the steps of Enrico Prandini, CECE will work to further strengthen the public profile of the European construction equipment sector, describing and promoting the importance of the sector for the European economy and society at large," concluded Niklas Nillroth.





# LAVINA

by  **SUPERABRASIVE**



**L16EU**

406 mm

**L14EU**

335 mm



**BOOTH B9003,  
BRONZE LOT.**

Compact, lightweight and versatile  
**LAVINA ELITE** machines for floor  
grinding and polishing. Great for  
both residential and commercial  
projects. Easy to use and transport.

- 1 phase, 200-240V, 12A (max)
- Variable speed
- Foldable frame
- Can be divided in two pieces for easy transportation

**ELITE**

S E R I E S





## The era of battery driven professional tools are here

Releases of new products for demolition, concrete cutting, concrete floor grinding and so forth come quickly and often. We see a number of new products being released every year that makes the life for the professional contractor easier, safer and more efficient. There is of course nothing wrong with that, these industries have developed new products and solutions at an impressive rate, but it is not so common that we see real innovations or breakthroughs.

Examples of such breakthroughs are when the first hydraulic breaker was released, the first truly mobile concrete crusher, crushing bucket attachment or sorting grapples, let alone the first mobile concrete recycling machine. Other such major developments include the first high cycle concrete cutting tools, the release of the planetary concrete floor grinder where it seemed that the entire industry started to grind and polish concrete floor to a final floor product. These are some of the many excellent examples of industry developments that have changed the life for many contractors, but now however, new releases seem to be small paradigm shifts.

To my knowledge, we are looking at such a paradigm shift again, this time a major one. When high cycle concrete cutting machines were released and further developed it was a revolution for the concrete cutting industry. They are much easier to work with, light and just as powerful as the hydraulic units. In just a few years they almost wiped out the hydraulic ranges besides in a few particular applications. Even the Americans, that like their heavy-duty equipment, have adopted high cycle equipment.

In recent years, battery technology started to improve with more efficient batteries, safer and quicker to charge, which has resulted in discussions in the professional concrete cutting industry as to when battery driven heavy-duty machines and tools would be introduced. Personally, I thought that these innovations would wait at least ten years as many battery producers struggled to keep the size of the battery down when increased power was needed. I believed that battery power works impressively for small handheld machines but not for large power cutters, core drilling systems or even jackhammers. But it seems I was wrong.

About a week ago I was invited to Milwaukee's product launch event in Europe, which saw almost 3,000 employees and trade journalists being invited to learn about the latest news. There was a plethora of new equipment, mostly consisting of the lighter battery driven power tools that Milwaukee are most well known for. What really struck me was that Milwaukee now is entering a whole new client sector by releasing a battery driven core drilling system and a battery driven power cutter, both for heavy users, and a battery driven jackhammer. The battery is rather big of course, but far much smaller than I expected, with the same battery being able to be used in all three machines with a charge of only 50min.

At the Milwaukee event there were a number of demonstrations where the above were tested against competing electric or petrol powered brands, with the Milwaukee battery driven machines delivering better results. At this moment I have not dug deeper in to the technical specifications and performance but a full report will be published in PDi 2. If the new Milwaukee battery driven machinery

for heavy users in concrete cutting and demolition are as good as they appear, then a real breakthrough, a real paradigm shift is underway. Furthermore, we will have a new player in the heavy core drilling, power cutting and breaking industries, as battery driven equipment delivers many benefits in terms of safety, working environment, noise, ease of use and even efficiency.

**Jan Hermansson**  
Editor-in-Chief  
[jan.hermansson@pdworld.com](mailto:jan.hermansson@pdworld.com)



Since January 2020, mobile screener manufacturer Maximus has become RM Dungannon. Based in Northern Ireland, Maximus has been owned by the RM Group since 2018, manufacturing a range of mobile screeners which complement the existing RM product range, with collaboration having a positive impact on the sales figures which grew by 15 % in 2019.

"Rubblemaster has always promoted a company culture that brings people together - customers, suppliers and network partners. In recent years this culture has enabled us to exchange knowledge with our location in

Northern Ireland, develop and launch new products and expand our expertise in all areas," says Gerald Hanisch, founder and owner of the company. "A major focus was put on the restructuring of processes and market and product evaluation. In addition to customer benefits, many synergies have been employed over the years, such as shared suppliers and increased cooperation in innovation, product management and sales. We see the rebranding as the next logical step so that we appear on the market as a strong, full solution provider with one brand name - the RM Group," explained Hanisch.



## Hyundai Construction Equipment names Sungwoo Lee as new managing director for Europe

HCEE (Hyundai Construction Equipment Europe) has announced the appointment of Sungwoo (SW) Lee as its new managing director with effect from 1 December 2019. With over 20 years of service with the Hyundai group, SW Lee brings a longstanding international sales career to Europe. SW Lee replaces J.H. Chun who will return to Korea where he will lead the international marketing team of HCE (Hyundai Construction Equipment).

Sungwoo Lee is already very familiar with the European organisation as has previously worked as a construction equipment sales manager at Hyundai's European subsidiary from 2005 to 2009. This has provided him with a good understanding of the dealer network, European market requirements and culture. In his new role, SW Lee will focus on a proactive

sales strategy, aiming to further grow the European dealer network, setting up a key account management structure and an advanced market oriented product strategy. He also plans to lead HCEE into gaining an increased profitable market share in the coming years.

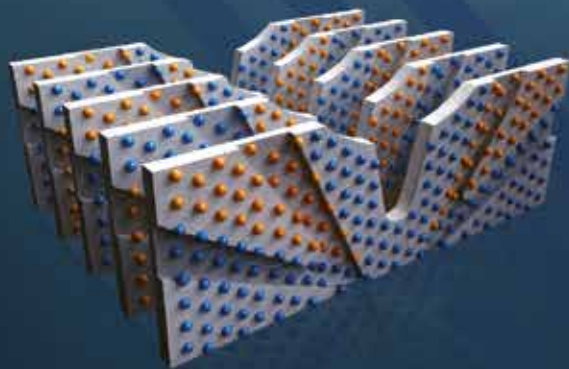
SW Lee said of his new appointment, "At HCEE we are striving to become a top player in the worldwide construction equipment business. In a stabilising European market we wish to grow our market share in a sustainable and profitable way. Growth in our market share will lead to a higher brand visibility. Growth in quality and quantity of both our organisation and dealer network will be our primary goals to achieve this. We will continue to focus on the 3 E's: embrace our dealer network, excel in what we do and engage our internal teams."



edition **R+**

# ZENESIS

WORLD'S MOST ADVANCED  
PATTERNED DIAMOND TECHNOLOGY

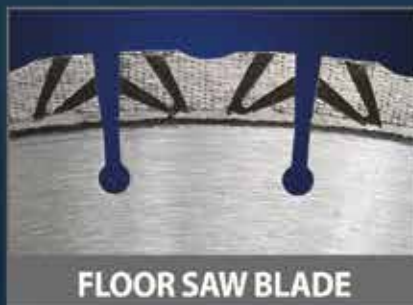


## NEW **R+** PLATFORM

The edition **R+** is the optimized platform of edition **R** combining with alternating diamond layers. It reflects customers' demands and leads to the extreme performance and stability.



WALL SAW BLADE



FLOOR SAW BLADE



CORE BIT



EHWA DIAMOND IND.CO.LTD. [www.ehwadia.com](http://www.ehwadia.com) | [salesinfo@ehwadia.co.kr](mailto:salesinfo@ehwadia.co.kr) | Tel: 82 31 370 9300 | Fax: 82 31 370 9191





## Words from the EDA President

### EDA to support Serbian demolition industry with annual convention in Belgrade

In 2019, the European Demolition Association organised a study tour to Japan on the occasion of the EDA's 40th anniversary. This year, the EDA Annual Convention is to be held in Belgrade (Serbia) from 4 to 6 June. The goal here is to support the newly formed Serbian Demolition Association, SDA. The EDA here will be organising one of the most relevant and important events of the demolition year, combining professional content, an exhibition as well as combining networking opportunities with leisure activities.

The Belgrade convention will allow attendees to learn more about the industry in the country, as the best way to learn about Serbia is by coming to the country and to the event. The Serbian Demolition Association, SDA, is now an official member of the EDA and has also applied to join the European Decontamination Institute, EDI, whose members are national associations of the most developed EU member states. Cooperation between the SDA and EDA will be reflected in the organisation of work, projects, reports, regulations, education, certification and other activities.

Serbia itself has had a major problem with construction waste, with the city of Belgrade alone, approximately, sending 73% of its construction waste to landfill (not to mention a large number of unauthorised landfill sites, of which there are about 500). There are many reasons for this, and one of the main reasons is the lack of legislation concerning the treatment and disposal of construction waste and the lack of coordination by national and local authorities.

The SDA recently passed the EU project 'Parade', which is linked to education, training and certification in the field of hazardous materials in the construction industry. Given that a lot of EU countries already recycle 70% of their demolition and construction waste, the SDA is following the new protocol and plans towards the implementation of the circular economy to become one of the most advanced associations in South Eastern Europe.

In order to strengthen its economic and scientific capacities, the SDA promotes innovative solutions to help to the industry to emerge in a totally new and innovated way to protect the environment. The SDA has to this end signed agreements with the Academy of Engineering Science of Serbia (AINS) and

the Chamber of Commerce and Industry of Serbia (PKGIS). The SDA is keen to ensure that any legislation brought in should reflect the general European strategy, which is important in the EU accession process for Serbia, as recycling is seen as essential in EU countries.

It has been recommended by partner associations that the obligation to use recycling materials be introduced gradually, starting at a modest 5% or 10% and increasing to the planned 70%, thereby mitigating any possible damage to the country's economy. The aim is for Serbia to develop a new industry as well, thereby creating new jobs and taking care of public health through the use of modern technologies. The SDA has succeeded in raising awareness amongst its members. This year members have already been involved in a project with which saw concrete cutting as part of the demolition in an urban environment, with the removal of materials to a recycling site.

The SDA's work is based on similar lines to that of the EDA. Through building a national model based on tradition and experience, the SDA is confident of meeting the targets and goals of the European Union.

#### About EDA

The EDA was founded in 1978 and is the leading platform for national demolition associations, demolition contractors and suppliers. The EDA has a strong focus on developments in Europe, which are of interest to the demolition industry.

info@europeandemolition.org  
www.europeandemolition.org



**Francisco Cobo, President of EDA, European Demolition Association**



### Mecalac hires industry veteran

Mecalac has hired Peter Bigwood as its general manager to expand the company's reach in the Americas. In his new role, Bigwood will build brand awareness for Mecalac by growing the business, developing a strong dealer network, and expanding the Mecalac North America team. In addition to focusing on dealer development, Bigwood will also launch and grow the presence of Mecalac in the rental market.

"Mecalac is a world leader in many of the product categories we have," said Alexandre Marchetta, Mecalac CEO. "Unfortunately, the North and South American markets are fairly unfamiliar with our brand and product benefits. Adding Peter to the Mecalac team is an aggressive move to change that reality." Bigwood brings more than 30 years of construction industry experience in sales and marketing to his new role. Before joining Me-

calac North America in September, he served as vice president of sales and marketing for Brokk Inc. During his eight years with Brokk, Bigwood led the growth of the sales network in the U.S. and Canada. Before that, Bigwood served as president of Atlas Copco Construction Tools for almost 20 years.

"Mecalac focuses on solving common jobsite problems and creatively developing products to improve safety, versatility and efficiency," Bigwood said. "I'm looking forward to the challenge and opportunity of helping Mecalac grow in North and South America. I'm also excited to see the benefits these highly differentiated products can provide to our customers."

Mecalac's equipment was also on display at some tradeshow, including the ARA Show, booth 1896, 10 to 12 February, and Conexpo/Agg 2020, booth F2658, 10 to 14 March.



### New vice president of distribution and marketing for North America

Allu has announced the appointment of Edison Rocha as its new vice president of distribution and marketing for the United States and Canada. Rocha's main areas of responsibility will be for increasing the development of distribution channels, as well as for marketing throughout North America.

Edison Rocha brings almost 25 years of experience in construction equipment sales, dealer development and marketing to the position of vice president of distribution and marketing. This includes 11 years with Sandvik Mining & Construction, where he held positions in aftermarket and sales management in South America and USA,

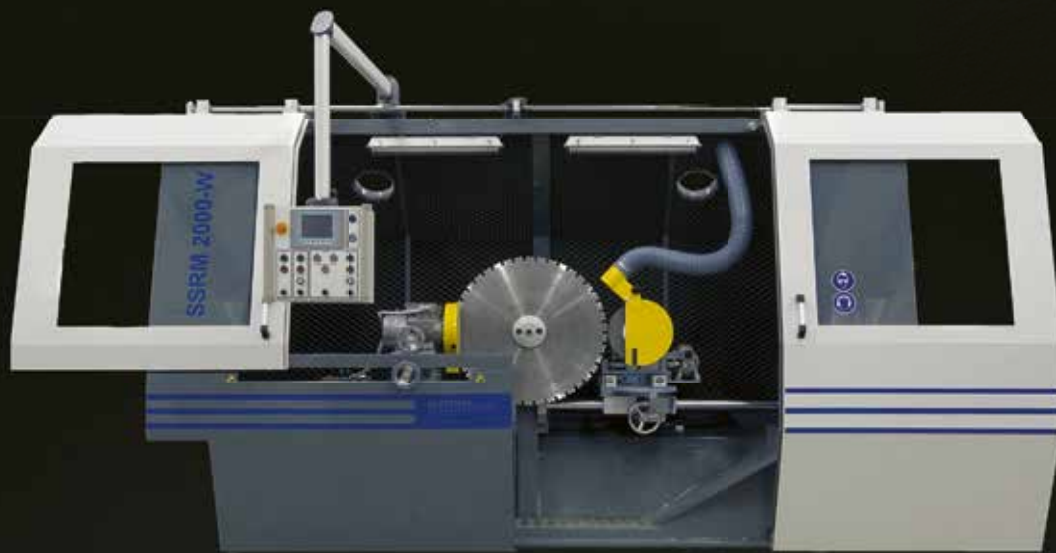
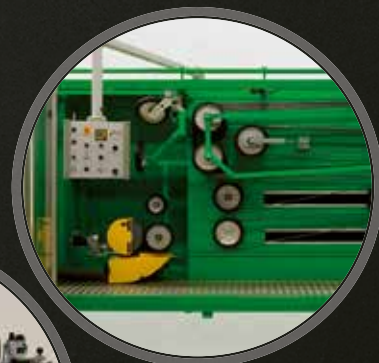
most recently as a divisional sales manager for the United States. Prior to that, Rocha worked in sales and sales management for Linck Machines and Servcorp International. He holds bachelor's and MBA degrees from leading universities and is proficient in English, Portuguese and Spanish.

"I couldn't be more pleased to have Edison join our team in North America," says Edgar J. Chavez, president North America of Allu Group Inc. "With his years of experience and knowledge, not only in sales of heavy equipment, but also in managing equipment distributor channels, we are well positioned to strengthen our position in North America."

# THE STAY SHARP SOLUTION



FOR YOUR  
HEAVY DIAMONDS



You want to do circular-grinding and side-dressing of saw blades and, if required, also angle-dressing of specific diamond tools in a most efficient way? By convenient semi-automatic and dry grinding operation? Suitable for diameters from 200 to 2000 mm and side-dressing up to 120 mm the **SSRM 2000** is the machine you need!

**PLATTNER**  
stands for high quality products in diamond business.  
We are producing wire saw equipment as well as machinery  
for working on diamond tools. Innovation, precision  
and flexibility always keep us one step ahead  
- since 1994!

WATCH THE VIDEO







## EDA and EDI welcome IETS as a new member

The European Demolition Association and European Decontamination Institute has announced a new member: IETS Innovative & Ergonomic Tools.

IETS Innovative & Ergonomic Tools is a French manufacturer of construction and civil works machinery based near Lyon, with company activities being divided into three main parts. Firstly, brushless power tools to grind, drill, groove, cut and other activities. Secondly, 'strainless' solutions (panel lifters, trolleys to grind/drill ceilings and wall gantries and other work). Thirdly, bespoke customer solutions. IETS uses unique technology that allows the company to make power tools highly durable and waterproof, which is particularly appreciated in the demolition, decontamination, remediation and nuclear decommissioning fields.

## EDA welcomes new member

The European Demolition Association has increased its presence in Europe with the addition of the Crushmash Group.

Crushmash Group is a company that was founded in 2006 specialising in Russian Federation renovation projects. The use of modern technologies and the experience gained over 13 years has allowed the company to successfully complete work at hundreds of facilities. For this reason, the company is considered to be leading member of the Russian Federation business community. It has varied and extensive experience in carrying out work on technically complex and hazardous facilities. This includes dense urban areas, often with chemical and biological hazards, or dismantling facilities affected by accidents and emergencies.

The company provides environmental support on all of its projects, including laboratory research, disposal and recycling of waste, offering its own crushing and screening capabilities. As a result, the company has preserved hundreds of hectares of natural habitat, not allowing them to be turned into new landfills for construction waste due to the processing of up to 90% of waste.



## ShearCore names Murray Plant as its 2019 Worldwide Distributor of the year

ShearCore has announced that Murray Plant, a Blue Group company, has been named the 2019 Fortress Worldwide Distributor of the year.

Murray Plant purchased a record breaking number of Fortress products in 2019, making it the number one distributor of Fortress products worldwide. Bruce Bacon, president of Exodus/ShearCore, stated: "There is no doubt that the skyrocketing success for Fortress in the United Kingdom is in large part due to the professional team at Murray Plant." Kevin Boreen, CEO of Exodus Machines, echoed Bacon's high regard of the working relationships with Murray plant, stating that, "We could not have asked for a better partner than Murray Plant/Blue Group to introduce the Fortress family of products to the UK market. We look forward to continued success for many, many years to come!"

"We at Murray Plant have been delighted with the Fortress product line. The world leading pedigree and quality of the range on both shears and concrete tools have been phenomenal. We now have customers investing in their second, third and in some cases fourth units because of their experience with the product," indicates Fergal O'Neill of Murray Plant. "Our business model has always been to focus on long-term relationships with customers and this can only be achieved if the quality of product you are supplying is right. With Fortress we are very fortunate to have what we consider is the Rolls Royce in premium shears," adds O'Neill.

The breadth of the Murray Plant and Blue Group product offering, the quality of the facilities, and its dedicated staff makes the perfect distribution partner. "Fergal, Bruce, Mick, and others at Murray Plant have been cornerstones of stability and I believe

certainly that the number of 'high profile' professional demolition contractors that own Fortress products is a direct result of their reputation for fair play and good service," states Bacon. "ShearCore prides itself on the relationships that have been built in the industry and is extremely grateful for the relationships we've built with Murray Plant and Blue Group that has helped us to grow our market share in the United Kingdom. Terry Sturgell, ShearCore regional sales manager, has been a vital team member in cultivating the relationship with Murray Plant and through his hard work this alliance has only grown stronger," he adds.

Bacon also recognises that relationships are key to continued growth and states, "I am in appreciation of the superb relationship that these companies have with Fortress and the markets, and I'd be remiss if I didn't state how amazing the personal acceptance of our team and products has been by many demolition and recycling companies in the U.K. I consider it an honour to know many of these men and women personally, and it is one of my best experiences in life to feel welcomed by them. I truly hold their trust and friendship in high regard."

ShearCore is a division of Exodus Machines, and offers a full product line for the recycling and demolition industries that include Fortress mobile shears and concrete processors, which are all made at its facility in Superior, Wisconsin. ShearCore operates under the simple belief: hire great people, deliver the best product, and focus on customer satisfaction. ShearCore has quickly become the new world standard in demolition and scrap recycling systems, with a reputation for innovative design, advanced engineering, and world class manufacturing.


## Erenfred Pedersen A/S becomes new reseller for Scanmaskin in Denmark

Erenfred Pedersen A/S, Denmark's largest supplier of grinding machines and tools for concrete grinding has from February 2020 entered into an agreement that will see the company sell and service Scanmaskin's range of floor grinders and tools in Denmark. Scanmaskin is one of the leading manufacturers of professional floor grinders and has one of the market's widest and most specialised selection of floor preparation machinery and diamond tools on the market. "We wanted a flexible supplier who thinks and works as a specialist and who will deliver the solutions our customers require," says Jørgen Jensen, product specialist for flooring solutions at Erenfred Pedersen A/S.

Scanmaskin Sverige AB has facilities located outside Gothenburg, a factor that allows Scanmaskin to quickly respond to what customers demand, offering fast deliveries and to be a flexible supplier. "For us, the closeness, the support and the fast response time Scanmaskin can offer have been extremely important when evaluating possible collaboration partners," says Martin Brinkmann-Pedersen, CEO of Erenfred Pedersen A/S. Likewise, Erenfred has sales and service located throughout with extensive knowledge of flooring and grinding. "Having a reseller who can support our end users is very important," says Paulo Bergstrand, CEO of Scanmaskin Sweden AB.



**Martin Brinkmann Pedersen, CEO Erenfred Pedersen A/S and Paulo Bergstrand, CEO Scanmaskin Sweden AB, outside the head office of Scanmaskin in Lindome, Sweden.**



**With OilQuick you  
always have the  
right attachment  
for the job!**



Come meet us at ConExpo and we will tell you all about the benefits of having an fully automatic quick coupler system. We will also demo our products and show you our new tiltrotator series.

We hope to see you in Las Vegas, March 10-14. Booth: F2876.

**OilQuick - The original world leading fully automatic quick coupler system, with more than 29,000 systems sold worldwide!**

- Lightning fast change of hydraulic and mechanical attachments from inside the cab.
- Always the right attachment for the job.
- No staff around the machine during tool changes.
- Reduce the number of machines on the site.
- Meets and exceeds safety standards globally.
- Increased productivity.
- Increased profitability.
- Reduced transport costs.
- Eliminates oil spills.
- Protected hose run.
- Improved safety.
- Less dirt in the cab.



## New product management appointments

Doosan Bobcat EMEA has announced two new product management appointments for the Europe, Middle East and Africa (EMEA) region. Jaroslav (Jarry) Fišer has been appointed product line director for the Bobcat compact loader range in EMEA and Robert Husar is now product line manager for Bobcat mini excavators.

Based in the Dobříš headquarters in the Czech Republic, Jarry Fišer is now responsible for leading the skid steer, compact track loader, backhoe loader and future loader product lines in the EMEA region. In this new role, Jarry will develop and implement long term strategies for the product lines, facilitate the development of business opportunities and collaborate globally with the various regional resources within Doosan Bobcat.

Also located in Dobříš, Robert Husar has been promoted to the position of product line manager for Bobcat mini excavators in the EMEA region. In this role, he will use his vast portfolio of skills to further enhance product strategy and business development, working globally on the long term product plan and developing the current portfolio of 17 mini excavators.



## New distributorship structure for Demarec in France

The sales structure of Demarec in France has changed as of the 1 January 2020. From that date, Arma Distribution has been the sole importer for France and the French overseas territories and will trade under the name of 'Demarec France'.

Demarec managing director Marcel Vening said of the new arrangement: "Recently an important agreement was signed between Demolition and Recycling Equipment BV (Demarec) and Arma Distribution. The reason that we have chosen a central importer for France and the French overseas territories of Guadeloupe, Martinique, French Guyana, Reunion and Mayotte, is the fact that we have a much stronger reputation with one central organisation operating under the name Demarec France can build up. Good for Demarec and all partners."

Another major advantage is that Demarec France has been keeping stock of the most common wear and parts and has also had its own stock of a number of new products. The daily management of the distributorship has been the responsibility of Mrs Chantal Billy with Mr. Fabrice Dufourneau having management responsibility for the technical department.



## New Keestrack dealer for Lithuania

From August 2019, Erco Technologies, with headquarters in Kaunas and a branch in Vilnius in Lithuania, is the new Keestrack dealer for Lithuania. The company is a new venture established by Artūras Stakauskas, a well-known figure in the business with 22 years of experience in the industry. It now sells and services Ammann, Elba, Guntert & Zimmermann, as well as the mobile Keestrack crushing and screening product range.

The number of leased machines in the European market is increasing every year. This is partly due to insufficient machine capacity at peak times, but also due to a shift from

ownership of equipment to the actual use of production capacity. For this the reason Erco Technologies has set up a rental division for Keestrack mobile crushing and screening equipment. Artūras Stakauskas the director of Erco Technologies says, "Setting up a rental division for mobile crushing and screening solutions is a great way for customers to introduce Keestrack quality products as seeing is believing! We can really show to our customers the fuel efficient and highly productive equipment."

With a qualified team of service technicians, Erco Technologies aims to provide the

best service and training to their customers. "The ease and accessibility to service Keestrack equipment has been an important factor in our decision to take Keestrack on board," says Stakauskas. "Also the lowest cost per produced ton is a convincing economical factor." To service its customer requirements the company has invested in spare and wear parts.

With an experienced, motivated team, Erco Technologies aims to deliver tailor made support by providing high quality products and services to its customers. The first Keestrack machines are already active on site in Lithuania, including a R3 mobile impact crusher.



## Walter Sund appointed Tyrolit building products manager for the Nordic region

Walter Sund has for the last 16 years been one of Tyrolit's best known and respected faces in Norway. Now the whole of the Nordic region has become his field of operation as Walter has recently been appointed Tyrolit's building products divisional manager for the entire Nordic region.

Norwegian native Walter Sund is a well-known industry figure throughout Europe, beginning working for Tyrolit in 2004 running the company's Norwegian operation on a self-employed basis. In 2008, he became a full time employee, being appointed sales manager for Norway. As of 1 November 2019, Walter is now responsible for Tyrolit's building product division throughout the Nordic region (this comprising of Denmark, Finland, Norway and Sweden).

"It feels like a fantastic challenge and I appreciate being given the responsibility to work with Tyrolit's building and construction products throughout the Nordic region. My mission is to strengthen and develop Tyrolit's position and show what fantastic products and services Tyrolit offers. I know that Tyrolit can play an even more active role in the development of the industry. In terms of products, we have a lot of exciting developments in the pipeline in the coming years," says Walter.

Walter turns 60 in October this year being born in 1960 in the city of Fredrikstad. This is located in the southernmost part of Norway where the Oslo Fjord opens into the Skagerrak Sea. Walter initially studied electronics and worked in that sector until 1998. During this period he also trained as a business and operations manager. In 1998 he moved into sales, firstly working as a product manager responsible for screw compressors and compressed air after treatment systems. He then began working in machine sales, involved mainly with machine tooling and welding, starting work in 2004 with Tyrolit in Norway. "I really love working with the construction industry. Here you meet very honest people with high skills and knowledge in their field," said Walter of his work in the industry.

PDi Magazine would like to take this opportunity to congratulate Walter on his new position within Tyrolit and his new responsibility for the Nordic countries. Anyone who visits Demcon in September this year will be able to meet Walter at the Tyrolit booth. He is also one of the key figures in the Nordic finals of the Tyrolit Cutting Pro Competition, which is also being held at Demcon.

[www.tyrolit.com](http://www.tyrolit.com)

## New managing director

On 1 January 2020 Motorenfabrik Hatz appointed Johan Joubert as the new managing director/ branch manager for Hatz South Africa. Based in Johannesburg, this is a wholly owned subsidiary of Hatz. Johan has been involved in the industry for more than 30 years with South African based distributors of for Caterpillar, Deutz, John Deere, Claas, Cummins and Massey Ferguson. Johan is passionate about creating power solutions that will add value to customer operations and has successfully delivered on various new engine installations, repower and power generation projects with two major engine manufacturers. He believes in high performance teamwork and empowering individuals to develop their full potential.

Joe Wilmer, who previously has been in charge of the South African subsidiary for seven years and jointly head of the UK operation for 15 years, hands over the day to day operation activities to Johan Joubert for South Africa. Joe will remain fully responsible for UK operations as managing director and will take on additional duties for a newly created position as head of distribution EMEA.





# HSD

*Diamond tool that matters*



HSD Europe GmbH Mergenthalerallee 77, 65760 Eschborn, Germany  
www.hsdeu.com info@hsdeu.com + 49 (0) 6196 96790 0





# ALLU SET TO 'TRANSFORM' THE WAY YOU WORK AT CONEXPO/AGG

Allu will be proudly exhibiting equipment from its Transformer, Processor and other equipment ranges at Conexpo/Agg2020.

The next Conexpo/Agg will be held from the 10 to 14 March in Las Vegas, USA. At the heart of the Allu show offering is a business focus based on 'Transforming the way you work'. This essentially translates into efficiency through providing a solution which is effectively a one stop shop process enabling the screening, crushing, aerating, mixing and loading all in a one-step operation. This also enables the transforming of profitability as less material goes to landfill resulting in less expenditure in haulage costs and landfill fees.

Additionally, Allu equipment is also focused on businesses transforming their green credentials, as less material transported to the jobsite means a reduction in fuel consumption, less material to landfill and the greater efficient utilisation of waste materials leading to the support of sustainability. In order to both show the breadth of the offering, and to show at first-hand how Allu is able to help transform the way businesses work, the following equipment will be exhibited at the show: Transformer DL 2-09 with 8mm TS blades (the thinnest blade model); Transformer DH 3-17 with 16/32 TS blades; Transformer DH 4-17 with 25/50 TS

blades; Transformer M 3-20 with 50mm TS blades and the Processor 300HD.

The Allu Processor on show is a power mixer attachment which converts any excavator into a powerful and versatile mixing tool capable of penetrating and effectively mixing a variety of difficult materials. Materials suited for the attachment range from clay, silt, peat, sludge and sediment, to dredged material and contaminated soil. Fitted to, and powered by the excavator's hydraulic system, and benefitting from its ability to reach difficult or soft areas, the Processor 300 HD is able to mix materials everywhere the excavator goes. This means that binders or chemical agents can be delivered to the area of the highest mixing shear by an

attached 80mm diameter pipe, and injected via a nozzle located between the mixing drums.

The Allu stand will be located C20326 Central Hall. The purpose designed stand will enable Allu to show visitors how Allu equipment and solutions are able to transform business operations, delivering improved productivity, efficiency and profitability. The Allu equipment at the show will demonstrate that with the widest range of attachments on the market that the Allu equipment ranges enables businesses to choose the right piece of equipment to meet their very particular requirements. Allu looks forward to showing at first-hand how its equipment and expertise can help any business transform more than just its profits.



## New wheel loader simulator training pack from CM Labs

CM Labs Simulations has announced a new wheel loader simulation training pack that includes guided learning features for faster skills acquisition. The new pack introduces guided learning in the form of real time feedback during exercises and integrates with a real time grade quality sensor (GQS) which tracks key metrics such as height, slope and standard deviation. This allows trainees to make the adjustments needed in order to advance their learning more quickly and ultimately develop positive habits that will carry over to the real equipment.

The training pack immerses trainees in a challenging environment that encourages them to change tools depending on the task they need to accomplish. This

means trainees must learn the proper usage of the wheel loader's quick coupler. This is a critical component of training, as it teaches them to avoid accidental release of the bucket during operations, which can cause life changing situations on the worksite.

The training pack incorporates CM Labs' Smart Training Technology, resulting in a training tool that delivers the most transferable skills anywhere outside of use of the real equipment. This comprises of CM Labs' proprietary and patented algorithms which ensures precision engineering of the simulated equipment inside the wheel loader training pack, including engine and transmission.



During Conexpo/Agg, Printrorh will be exhibiting numerous models including new tracked equipment. With the introduction of the Panther T14R in 2016, Printrorh has created new markets for its products whilst developing a strong dealer network, with the spring of 2019 seeing the Panther T7R being introduced as the first crawler carrier with a Stage V engine.

Both of these units will be on display in the Central Hall (booth C22231) along with attachments models from the vegetation management product line. Here the company will introduce its newest attachment, the M450h-1450 hydraulic mulcher for remote control carriers. Furthermore, the skid steer loader attachment, M450s-1900, will be shown as well as the entire excavator attachments line up, including the stump grinder S700e.

New this year is a second booth located in the Festival Grounds. The booth here will have on display the Panther T16 equipped with a dump box (the largest dump body unit by Printrorh), as well as the Panther T6 with a passenger cabin in the rear. Available on rental throughout the USA and Canada, the crawler carriers offer advantageous features while providing contractors with higher levels of productivity, fuel consumption levels and outstanding reliability.



# **A MASTERPIECE** **BEYOND TECHNOLOGY**



**OPTIMIZED DIAMOND ARRAY WHERE WE WANT IT!**

ARIX technology allows optimized diamond particle array for the fastest speed and longest life



**SHINHAN  
DIAMOND**

Masterpiece  
beyond Technology

[cs.en@shinhandia.co.kr](mailto:cs.en@shinhandia.co.kr)

**HEAD OFFICE [Republic Of Korea]**  
 21635, 13AE-10u, Namdong Industrial Park 375  
 Namdong-dong-ro, Namdong-gu, Incheon, Republic of Korea  
 T. +82-1600-4804 | F. +82-32-3614

**GERMANY**  
 Mengenthalerallee 79-81, 65760,  
 Eschborn, Germany  
 T. +49-6196-761-0777 | F. +49-6196-775-874

**USA**  
 SHINHAN DIAMOND AMERICA, INC.,  
 900 S. Ajax Ave. City of Industry, CA 91748 U.S.A  
 T. +1-626-363-9258 | F. +1-626-363-9259



## IJ Lynn choose Epiroc kit for demolition of waste water treatment plant

On the back of three years reliable service from its Epiroc breakers, drainage and earthworks contractor IJ Lynn & Sons have further invested in Epiroc breakers and grabs.

Performance combined with back up service, and support from local dealer WAC McCandless (Engineers) Ltd, were the main reasons for selecting Epiroc's MG 1500 multi grapple and MB 1650 breaker. Having bought his first Epiroc SB 152 early in 2017, owner Ivan Lynn's positive experience led him to choose Epiroc's equipment as he knew it to be more productive, requiring less down time and maintenance. "We've been using the new breaker and grapple to demolish a waste water treatment plant and then remove the waste from the site. I've been particularly impressed with the MG 1500 R – the rotation unit on the grab makes it so much faster and more flexible than our old grab," explained Ivan Lynn.

The team has also used a MB 1650 hammer to break up the water tanks, moving the large pieces of debris to an area of the site where they can be broken down quickly and easily using the company's Epiroc SB breakers before being removed from the site for recycling. Epiroc regional sales manager Donal Cunningham said, "Thanks to their particularly robust design, our versatile MG excavator grapples are perfect for demolishing light structures as well as sorting and loading demolished material. Like the grab, our SB and MB hydraulic breakers combine efficiency and performance with high durability."

The team at Epiroc's distributor, WAC McCandless, have years of industry knowledge; specifically across demolition, utilities, groundwork, remediation, quarrying and civil engineering. This has seen Michael Quinn, area sales manager from WAC McCandless, to

be on hand throughout the process, from selecting the right equipment for the job, through to commissioning and after sales service.



## Ahead of time with Doosan Excavators

FW Bau is a construction company based in Salzhemmendorf in Germany and has used a Doosan DX255LC excavator to dismantle a concrete tank at a sewage treatment plant at Malente in Schleswig-Holstein.

Since the DX255LC, the company's first Doosan excavator, went into operation in April 2018, FW Bau has purchased four more Doosan excavators from the Doosan dealer, Atlas Hannover Baumaschinen GmbH & Co. According to Felix Wessel, the owner and managing director of FW Bau, the combination of the reliable, efficient Doosan machines and a strongly customer and solution oriented dealer in Atlas Hannover Baumaschinen, has given FW Bau the security the company needs in carrying out its everyday business.

### Faster than Expected

In dismantling the tank at the Malente sewage treatment plant, the Doosan DX255LC impressively demonstrated its efficiency and strength. Originally, it was planned it would take three weeks to demolish the tank (height and diameter of 14m), including the processing of the roughly 200m<sup>3</sup> of demolished concrete and around 800m<sup>3</sup> of stone that was produced. In fact, Felix Wessel's company was able to complete

the project in just two weeks. One of the reasons was the trouble free operation of the construction machinery used. "I can fully rely on the Doosan machines, which is an important factor for me as a medium-sized contractor," Felix explained.

### Complete Package

FW Bau has had a relationship with Atlas Hannover Baumaschinen for many years and after the company hired a Doosan excavator for the first time in 2017, Wessel decided to acquire his own Doosan fleet. In addition to the DX255LC, the fleet at FW Bau now includes DX10z, DX63-3, DX140LCR-5 and, most recently, a DX190W-5 wheeled excavator.

Felix Wessel has known Atlas Hannover Baumaschinen GmbH & Co., for many years, particularly appreciating the dealer's solution oriented approach. Carsten Gröbitz, managing director of Atlas Hannover Baumaschinen, said: "If there is a problem, the most important thing for us is to first ensure that the work can continue." Felix Wessel adds: "If worst comes to worst, we can fully rely on the team from Atlas Hannover – thankfully I can say that none of the five Doosan machines has had a problem."

## After 11 years crushing with the R900, it's time for a larger Rockster impactor

Slovenian construction company AGM Nemec has purchased its second Rockster impact crusher following 11 years using a R900 impactor with the R1100S being the 'obvious choice'. Gerčer Špitalar, managing director of AGM Nemec, commented: "The R900 impactor was an important addition for the growth of our construction sector and it enabled us to take on other projects where crushing of asphalt or recycling of concrete on the spot was a must."

However, as the size of construction projects grew, the need for a larger impactor was identified, with the company choosing the Rockster R1100S impact crusher. "It was very easy for us to decide since we have had Rockster impactor for more than 11 years. With the additional screening system, it will enable us to broaden our services, which means crushing and screening on site. We will use the screen system mainly for production of 0-16mm and 0-32mm final product. Sporadically, the R1100S, will be required for recycling demolition debris such as reinforced concrete as well as asphalt," concluded Gerčer Špitalar.



FEBRUARY 22-25, 2020

**DEMOLITION  
AUSTIN**

AUSTIN CONVENTION CENTER // AUSTIN, TEXAS

TAKING DEMOLITION TO THE NEXT GENERATION

**MEET US ON BOOTH #905**



# CONTROL DUST

**WITH THE FIRST PATENTED  
WATER SPRAYING INTEGRATED  
TECHNOLOGY**

**SPRAY JUST RIGHT  
WHERE YOU NEED IT  
WHEN YOU NEED IT!**

## ARDEN **JET**

**5 TIMES  
INTERNATIONALLY  
AWARDED**



Visit [www.arden-equipment.com](http://www.arden-equipment.com)





**HYDRARAM'S**

# HDS-718 in action in Russia

***The strict dust pollution requirements in the city of Adler made the demolition company Technoservice turn to Hydraram's HDS-718, a trailer dust suppression system that can create water fog up to a distance of 80-90m.***

**H** hydraram is represented worldwide through an extensive network of partners and dealers. For the Russian market, the company Anbau is the company's representative with its headquarters in Moscow. In the summer of 2019, Krasnodar based Technoservice turned to Anbau seeking a Hydraram dust suppression system. The machine in question was the HDS-718 mounted on a wheeled trailer, making it mobile and easy to use.

Technoservice, which specialises in building demolition, has six demolition excavators, each weighing 35t, which were to be used to demolish a large facility in the city of Adler located on the Black Sea coast. Here the company faced strict requirements to minimise dust pollution, which Technoservice had to immediately take into consideration. In order to do this Anbau was able to supply a HDS-718 Trailer dust suppression system with optional accessories, including electric water pump, ergonomic multifunctional radio command and the trailer itself. This particular dust suppressor creates a water fog at a distance of 80-90m, which makes it one of the most effective and powerful systems Hydraram

can offer. The machine was supplied by the Dutch manufacturer one month later and delivered a week later to Technoservice in Adler, Russia.



The managing director of Technoservice said of the HDS-718 trailer mounted dust suppression system: "The first time I came across this machine on the internet, I was really impressed and interested in learning more about it, since it was relevant to one of our newest projects. I began to look for official Hydraram partners in Russia and discovered Anbau, the Russian distributor of Hydraram products and services. At bauma 2019 in Germany, I got a chance to view the Hydraram booth and see the HDS-718 Trailer machine. I realised that it was exactly what we needed.

"Shortly after that, I decided to make the purchase. I was already familiar with the way this machine works, but once I saw it in action, its effectiveness exceeded all of my expectations as it created a water fog of almost 100m and washed the dust away like it was never there. Our team was so pleased with the results and performance of the HDS-718 Trailer dust suppression system that we decided to further research Hydraram machines. After consulting with Hydraram, our final decision was to invest in a pair of MK-20 multiprocessors and HMG-T1300 hydraulic magnet. I would definitely recommend



## THE ART OF SURFACE PREPARATION

BLASTRAC IS THE LEADING INTERNATIONAL DEVELOPER AND MANUFACTURER OF SURFACE PREPARATION EQUIPMENT



**SHOT BLASTING**  
TO CLEAN AND RETEXTURE  
CONCRETE OR ASPHALT



**STEEL BLASTING**  
TO REMOVE COATINGS, RUST & PAINT  
FROM STEEL SURFACES



**GRINDING**  
FOR GRINDING AND POLISHING  
LARGE FLOORS AND OTHER SURFACES



**SCARIFIERS**  
TO LEVEL LARGE SURFACES OR  
REMOVE THICK COATINGS



**FLOOR STRIPPERS**  
FOR THE REMOVAL OF FLOOR  
COVERINGS



**DUST COLLECTORS**  
TO WORK IN A SAFE & DUST FREE  
ENVIRONMENT



Hydraram to anyone who is looking for long lasting, high quality and easy to maintain hydraulic excavator attachments!”

Hydraram was founded in 1993 mainly selling its products in the Netherlands. Exporting began in earnest in 2000, and since 2004 the company has developed an international dealer network. In 2005, it opened its first German branch office to provide support to German dealers and in 2018 celebrated its 25th anniversary. Over these 25 years, Hydraram has focused on a reliable global sales and a service network and invested in a rental fleet of demolition attachments, said to be the largest in the Benelux and Germany.

Hydraram describes itself as determined to provide customers with high quality tools for use in the demolition, recycling and forestry industries. The product range includes hydraulic hammers, various demolition shears and pulverisers, grabs, crushing and screening buckets, magnet systems, pile crackers and multi recycler excavator attachments, as well as dust suppression systems. The company builds attachments with high power requiring minimal maintenance, with products fitting excavators from 1t to 250t.

The company works with professional demolition contractors that require powerful, fast and environmentally friendly attachments with less downtime. Wear



parts for all attachments are replaceable, with all tools being made of Hardox 400 or ‘Hituf’ steel. As for the future, Hydraram’s vision is to focus on ‘staying the best,

not biggest’, as the company is a medium sized player in the demolition industry and focuses on quality and not quantity.

## PROFESSIONAL CORE DRILLING PRODUCTS

**LISSMAC**  
CONSTRUCTION TECHNOLOGY

**BeBoSa 2020  
Hall 2, Stand 2A01**

LISSMAC Maschinenbau GmbH  
Lanzstraße 4  
88410 Bad Wurzach, Germany  
Phone +49 7564 307-0  
lissmac@lissmac.com, www.lissmac.com



# Pentruder

## RS2

SEE IT AT BEBOSA!

### A SMALL WALL SAW WITH LARGE CAPACITY

**Quick disconnect coupling for blade**

Easy fitting of blade

**Only one connector**

Simple to connect and disconnect

**Light weight, easy to fit blade guard**

Best protection and handling

**Revolutionary one-of-a-kind integrated motor**

Very high system efficiency means more power to the saw blade

**Pentpak 3 drives a range of HFi products**

Modular system with significantly lower machine weight

**Same track system as all other Pentruder machines**

Highest stability and best handling

**Designed with the customer in mind**

Less components

Very easy oil change

Efficient slip clutches for all motors

Brushless feed motors





The Caterpillar Conexpo/Agg 2020 experience includes a mix of static displays, equipment demonstration area, and new services/technologies under the theme of 'Your Work Matters'.

More than 30 Cat machines will be on display at the Las Vegas show, including nine new product introductions from the dozer, excavator, articulated truck and backhoe loader families. These will be displayed at the outdoor Festival Grounds, stand number F4455. Also being shown is a wide range of new wheeled, small,

medium and large hydraulic excavator models including the new M318, 313 GC and 315.

#### **New Cat technology and services**

Significant safety, efficiency, accuracy and productivity gains are achieved through implementing new Cat technologies on machines. Recently introduced 'Cat Productivity' is a web based advanced productivity management tool that delivers payload, machine and site data from Cat Product Link, allowing contractors

to compare performance against productivity targets, fix inefficiencies and maximise machine utilisation to increase profits.

Show visitors will be the first to see Caterpillar's latest remote control offering, an enhanced operating station with expanded capability to operate multiple pieces of equipment. Equipped with the 'Command Vision System', from a single remote station, the 'Cat Command' remote control system also offers a portable console, designed for line of sight use, which will also be showcased. Also making its North American tradeshow debut will be 'Command for Compaction' from Cat's paving products group, which automates the compaction process to increase quality. Featuring an intuitive interface for simple operation, this eliminates skill gaps to deliver up to 60% better coverage with consistent and precise overlap, constant speed and correct pass count. The group will also showcase the latest developments to its eRoutes 3.0 asphalt delivery solution.

Also being featured will be new 'Customer Value Agreements' (CVA) that offer three levels of agreements based on customer need and offer up to five years comprehensive coverage in order to lower owning and operating costs. The newly released 'Cat Remote Services' and 'Remote Troubleshoot' diagnostic testing will be shown, as well as the launch of the new 'Cat Abrasion Undercarriage'. The latter boasts a new XL sealing system that doubles seal life in some applications and delivers up to 50% more link life than heavy duty designs.

#### **Nine to compete in Global Operator Challenge finals**

The finals for the Global Operator Challenge will take place at the Caterpillar outdoor stand. Nine Regional Champions remain standing from over 10,000 operators participating in local challenges throughout 30 countries. The champions will compete on Tuesday morning, 10 March, immediately following the shows grand opening. Caterpillar will show a live broadcast of the competition on cat.com. After completion of the skills challenges, the winners will be announced and awards will be presented for the lowest time for each individual challenge, best team performance, and the announcement of the Global Operator Challenge Champion based on overall performance.

## **Hidromek to show its product innovation at Samoter 2020**

Samoter will see Hidromek, whose construction machines work in more than 100 countries, exhibit its latest product innovations at its stand No. 5-8, area F. The Turkish company has also won two awards in Samoter's international technical innovation competition which is organised as part of the fair. The Innovation Awards' are for the HMK 230 NLC crawler excavator which belongs to the new innovative H4 Series.

Aiming to create a real difference in the design of construction machinery, Hidromek's achievements are to be recognised by the Samoter Innovation Award 2020, winning in two categories. These are the 'Technical Innovation Award' and an award in the 'Design Special Category' for its HMK 230 NLC which is part of the H4 Series. This range offers high performance, with the excavators being noted for their operating speed. H4 Series excavators are produced to be faster, more

productive and more efficient with a purpose developed hydraulic system design, producing more work with less fuel. Along with the award winning HMK230 NLC, Hidromek will also be displaying its HMK 145 LC SR, HMK 310 NLC and HMK 390 NLC crawler excavators which all belong to the H4 Series.

The HMK 635 WL wheel loader will also be exhibited at Samoter 2020. The loader is more environmentally friendly and productive being fitted with a MTU Mercedes Stage V engine which shortens cycle times and provides high load capacity. The HMK 635 WL possesses high breakout force, dump clearance and traction, and is frequently used

in mining and stone quarries, batch plant and industrial applications. Also being exhibited at the Italian show is the HMK 145 LC SR, which is an excavator designed to work in urban areas and narrow spaces.



# The expert's choice.

A streamlined range of dry cutting discs tailored to today's powerful machines. High cutting speeds and lifetimes guaranteed.

Get more information on [www.tyrolit.com](http://www.tyrolit.com)

**NEW! PREMIUM range available from spring 2020**

DCU FOR  
ALL-ROUNDERS

DCH FOR  
ROCK-STARS

DCC FOR  
CONCRETE PROS





# Durable Performance



Increase the capabilities of your concrete cutting and demolition toolbox. Operate a full range of Pentruder High Frequency equipment simply by connecting the same Pentpak, remote control, motor, and cables to a wall saw, a wire saw or a heavy duty core drill.

All Pentruder equipment is Made in Sweden. We produce precision parts in-house, from the best materials, in state of the art production machines. With over 35 years of experience from designing concrete cutting equipment, we know how to build high performance, durable systems.

Visit our website for more information & contact details to our distributors:  
[www.pentruder.com](http://www.pentruder.com)

Or check out our facebook page: [www.facebook.com/pentruder](https://www.facebook.com/pentruder)  
or Instagram: [pentruder\\_official](https://www.instagram.com/pentruder_official)

**Pentruder®**  
CONCRETE CUTTING SYSTEMS

Designed and manufactured by:  
Tractive AB | Gjutargatan 54 | 78170 Borlänge | Sweden  
Tel: +46 (0)243 221155 | E-mail: [info@tractive.se](mailto:info@tractive.se)  
[www.pentruder.com](http://www.pentruder.com)







**QUICK COUPLERS FOR**

# HEAVY DUTY APPLICATIONS

*The development and improvement of fully automatic quick coupling systems for demolition and recycling applications seems to never stop. Here is some of the latest news from the leading manufacturers of such systems.*

**S**mart, quick coupler systems continue to be a big issue among demolition and recycling contractors. However, developments appear to have stalled recently, though bauma last year and now Conexpo/Conagg in March have both produced some major news.

## Increasing number of players

The number of companies developing and manufacturing fully automatic quick coupler systems has increased, although the majority are not specifically designed for heavy duty demolition and recycling applications. The companies that do produce systems for demolition and recycling are OilQuick, Steelwrist, Lehnhoff, Cat Work Tools and VTN Europe to mention but a few. Now there is a new system from Rototilt.

## News from OilQuick

Swedish manufacturer OilQuick states that it takes safety in the workplace very seriously, with a great deal of development time going into delivering what it considers to be the safest quick coupler systems on the market. Reaffirming this, for the last five years

OilQuick has offered the 'OQ-LockSupport' (OQLS) electronic monitoring system, which, according to OilQuick, is the most advanced safety system on the market for excavators today. OilQuick has now taken the next step by launching OQ LockSupport 2.0. This new system provides new sensors, improved wiring and is equipped with completely new software. All existing safety requirement from respective authorities were already met with the first system with the latest version also meeting these requirements. OQLS is available for two quick couplers in a 'sandwich version', i.e. above and below the tiltrotator.

OilQuick has also introduced an innovative fall protection system – OQSH - which prevents attachments dropping around the machine. In the event of careless or incorrect coupling by the operator, OQSH's

safety hooks catch the attachment in all positions. OQSH can be compared to a safety belt in a car, which automatically deploys in the event of an incident or risk of personal injury. A mechanical lock indicator, MRL, has also been introduced which clearly informs the operator whether the coupler's locking plungers are in the locked or unlocked position. MRL indicates whether the attachment is correctly connected or not and locked only when the locking plungers are in the correct position under the frame pin.

The biggest news this year however from OilQuick is the launch of the new tiltrotator series, OQTR-E. Tiltrotators are not used that frequently in demolition and recycling work, but there are applications where they come in handy. We have mentioned previously in PDi that OilQuick and another Swedish company,





**DON'T MAKE ME ANGRY.**



**MARILYN SCRAP SHEAR CS SERIES.**

For modern industrial demolition sites and for professionals in the recycling and trading of scrap of ferrous and metallic materials.



**SaMoTer**

Visit us at:

**CONEXPO BOOTH F-3176  
SAMOTER HALL 12 - STAND C4**



WE ARE DEMOLITION

**TREVI BENNE®**

WWW.TREVIBENNE.IT



IL FUTURO È VERDE

# Crushing & Recycling plants



*"The right solution  
to process the material  
directly on job site!"*

## UTM/UTS 1500-2

Mobile and transportable shredders for aggregates, rubble and other materials.

Now available also in USA and Canada version, this shredder is fully automated and combine **great power and small dimension** with a productivity up to 180 t/h, ideal for heavy workloads.



**Visit us @CONEXPO-CON/AGG  
Las Vegas - 10/14 March 2020**

**STAND: GrinderGrusherScreen  
Central Hall C3-C5, Stand C31061**

**Visit us @Asphaltica (co-located with SaMoTer)  
Verona - 21/25 March 2020**

**Hall 11N, Stand G5**

EXHIBITOR AT

**SaMoTer**

91<sup>ST</sup> INTERNATIONAL CONSTRUCTION EQUIPMENT TRADE FAIR  
VERONA, ITALY | 21-25 MARCH 2020 | SAMOTER.COM

**asphaltica**

International Asphalt Industry Exhibition Equipment, Technologies and Road Safety



Via Giulio Golini, 301  
40024 Castel San Pietro Terme  
Bologna - Italy

**Tel: +39 051 69 46 611  
Fax: +39 051 69 46 650**

info@camssrl.it  
www.camssrl.it



### Rototilt enters the arena

Rototilt is well known for its tiltrotators, but is now launching 'Rototilt QuickChange' for machine couplers, tiltrotators and tools that enable operators to change hydraulic tools without even leaving the cab. 'Safer and simpler' than any other solution on the market, according to Rototilt, the system incorporates several patent pending solutions. Rototilt QuickChange offers a combination of durability, optimised excavation geometry and safety providing the handling of the machine coupler – and the other parts of the system – automatically from the cab. The risk of swinging or dropped tools is entirely eliminated thanks to the 'SecureLock' system.

QuickChange, according to Rototilt, has an unmatched service life, with the system having several unique innovations. The secret is said to lie in the conscientious product development for each function and each component of the system, as well as perfect integration between Rototilt's tiltrotators, machine couplers and tools. This has resulted in the operator being able to benefit from a fully-fledged tool carrier that lets the operator do jobs faster, smarter and with

Engcon, have begun to cooperate, with OilQuick providing fully automatic quick coupler systems expertise and Engcon tiltrotators and accessories for excavators. The two companies have named their cooperation: 'The best of both worlds'.

Another development has seen an update of the OQC model with a new and stronger rotor. This is primarily intended for use on material handling machines and loading cranes. It is said to provide faster, easier and safer swapping of hydraulic, mechanical and electrical

attachments directly from the cab, with the use of the right attachment, at the right time, making the machine a versatile tool carrier. In this way, the carrier machine can be used to its fullest, with attachments being able to rotate 360° with the aid of the rotor. Due to its design, it is also very environmentally friendly as it minimises any oil spill during the swapping of attachments. It can further be equipped with OilQuick LockSupport.

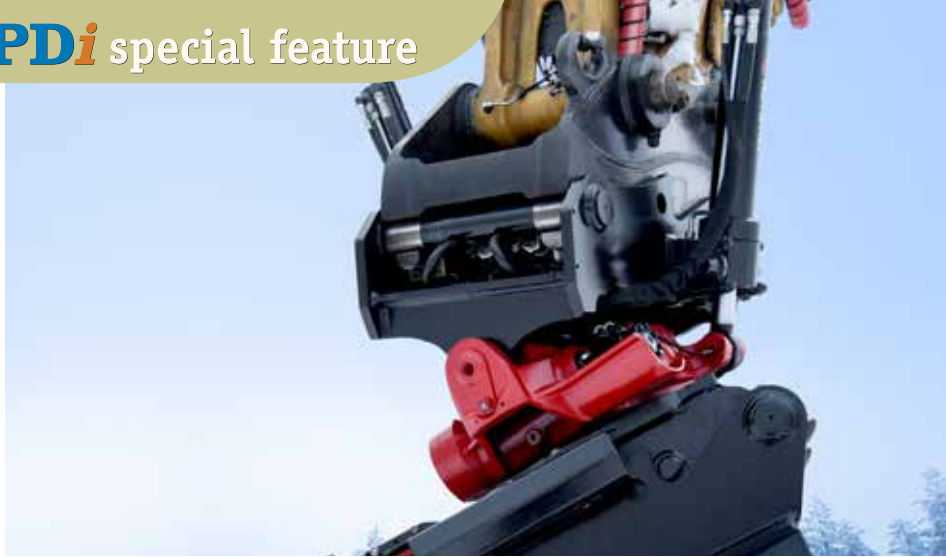
A cylinder less tiltrotator equipped with OilQuick's fully automated quick coupler system, OQTR-N, has been launched. Continuous 360° rotation and a tilt angle of 2 x 50° combined together with OilQuick's fully automatic quick coupler system OQLS, provides the operator with a complete aid to streamline and maximise working efficiency. It provides maximum visibility around the tiltrotator as there are no protruding cylinders, meaning work can be carried out more smoothly with the risk of accidents being reduced. As there are no protruding parts, excavating with narrow buckets in confined or deep shafts is made easier, while the risk of damage to protruding cylinders is eliminated. It also provides excellent stability and durability thanks to a specially cast housing with all hydraulics integrated.

All of these new products can be seen at Conexpo/Conagg in March 2020, stand F2876. OilQuick has been active in the North American market for quite a few years now, with an established sales organisation, spare parts supply and aftermarket management.

[www.oilquick.com](http://www.oilquick.com)  
[www.oilquickusa.com](http://www.oilquickusa.com)







more precision. At the same time, the operator is able to quickly disconnect the tiltrotator in tough conditions or when the job doesn't require tiltrotator functionality.

Additionally, Rototilt's QuickChange benefits from a new construction with an improved design of hydraulic couplings providing up to 50% higher hydraulic flow. This optimises the use of the machine's hydraulics, giving high levels of tool use performance, even on really tough jobs.

[www.rototilt.com](http://www.rototilt.com)

## New quick couplers from Miller UK

Miller UK is launching its next generation hydraulic quick couplers, GT Series, which is suitable for excavators from 1t to 50t. The brand new Miller GT series

range is said to be the lowest, lightest and safest quick coupler on the market, offering excavators a wide range of 'pick-ups' for any attachment all from the comfort and security of the cab. Some of the key product features include an innovative control system that guarantees the attachment is only released in a safe position, having a unique proprietary operating/locking system ISO13031 which is AS4772 compliant. This enables the operator to change attachment from the cab. It has a universal variable pin centre design, is maintenance free, with the innovative design encompassing fewer internal components. The system also facilitates quick attachment changes, maximising machine productivity with less down time. The system also eliminates having extra equipment on site as the variable pin centre design allows

pick up and swapping of what is said to be the widest range of OEM attachments, including the use of existing attachments without the need for any conversion.

[www.millergroundbreaking.com](http://www.millergroundbreaking.com)

# janser

Professional Flooring Technology

German Quality



Floor Scrapers to suit any application!



Ride-on ADB HS  
1180 kg

Ride-on ADB  
950 kg

Ride-on Electro  
656 kg



Power-Stripper  
14 kg



COSMO IV  
39 kg



MASTER MOBIL III  
105 kg



STRATO MOBIL IV  
190 kg



JUNIOR Ride-on  
420 kg

## Your projects - our equipment - your success!

Janser GmbH

Böblinger Straße 91  
71139 Ehningen  
GERMANY

Tel. +49(0)7034-1270  
info@janser.com  
[www.janser.com](http://www.janser.com)



# Karot<sup>®</sup> 180

**NEW!**

- + MORE POWER!**
- + LARGER DRILLING RANGE!**
- + SMARTER ELECTRONICS!**

**BeBoSa**

**MARCH 26-28**

**STAND 1B015**

| Use Wet or Dry, Handheld or on Drill Stand | Powerful 2400W Motor | Back- or Mid-Grip Models | LED Motor Load Management | Soft Start | Rotating Water Connection | Up to Ø180 mm in Concrete | Up to Ø202 mm in Masonry



**B+BTEC**



Munterij 8 | 4762 AH Zevenbergen | The Netherlands  
T +31 - (0)168 331 260 | E [info@bbtectoools.com](mailto:info@bbtectoools.com) | [bbtectoools.com](http://bbtectoools.com)





THE LATEST IN CRUSHING AND SCREENING

# attachments and buckets

***Every year, PDi Magazine takes a look at what's new in the crushing and screening attachment sector. This year sees new releases of vibrating screening buckets, shaft screeners and a whole lot more. Here are the latest products out this year.***

## BPH and Prodem

BPH Attachments has expanded its Prodem hydraulic attachments portfolio in the UK with the addition of a new crusher bucket. The Prodem PCB crusher bucket is designed to efficiently crush and convert waste material including brick, concrete, rock and even wood, into reusable hardcore or infill, directly on site. According to BPH Attachments, industry users have estimated that the attachment, which features a patented auto-reverse crushing drum, can increase productivity to anything between 34t to 45t/hour by reducing operator input and increasing utilisation of site machinery. It also has intuitive jaw adjustment, high displacement radial piston hydraulic motors, wear resistant teeth, and forward facing or reverse facing loading.

The PCB crusher can be utilised to reduce the volume of a variety of materials on construction or demolition sites, recycling, excavations, pipelines, road works and quarries. As the crusher bucket can be fitted to excavators already working on site, it negates the need for additional machinery and saving costs by cutting down on transport requirements, as materials can either be reused on site or the bulk will be reduced. The crusher bucket is suitable for 8t to 55t excavators including skidsteer and backhoe loaders. It crushes up to 70m<sup>3</sup>/h (PCB 400) and has a loading capacity of 0.4-1.8m<sup>3</sup> and required oil flow from 80-550l/min. Prodem Attachments are imported to the UK exclusively by BPH Attachments.

## Epiroc introduces bucket screeners

Epiroc has widened its portfolio of hydraulic attachment tools with a range of bucket screeners. The Epiroc

bucket screeners BS 1600 and BS 2200 combine modern design and sturdy construction to bring customers in the recycling and rock excavation business a complete solution. Hydraulic power is transmitted to the bucket via a timing belt that doesn't require tensioning. This reliable transmission solution delivers optimum torque and reduces maintenance time. Furthermore, the bucket features a polygonal design with 12 sides rather than a smooth rounded surface. According to Epiroc, this shape enables the material to be shaken in an effective way to speed up the screening process. The material then passes through hexagonal openings in the mesh becoming high quality aggregates straight on the job site. Depending

on needs and requirements, customers can choose from buckets with six different mesh size openings and is available in two sizes for 18t to 38t carriers.

## Updated Grey CB crusher bucket range from Green Attachments

The Grey CB is an updated range for downsizing demolition debris, which allows the user to crush material on site. The crusher buckets can be used in tough working conditions, for example soft rock quarries and pits. The buckets are produced in four models for 10t to 50t excavators with the structure being made of wear resistant steel for minimum wear. Crusher bucket applications include natural rock crushing, demolition debris handling and processing, as well as asphalt crushing, to name but a few.

The crusher works through a strong piston motor driving the rotation of a big wheel with power being transmitted to the crusher plates through a durable belt. The eccentric movements of the jaws are designed for effective crushing of the material. Furthermore, the buckets feature bolt mounted wear plates for easy maintenance, central lubrication and grain size adjustment in order to make the bucket a suitable option for a variety of applications.

## HVB Series vibrating screening buckets from Hydraram

After 27 years in the hydraulic attachment market, Hydraram has added vibrating screening buckets to its range of tools. According to Hydraram, the vibrating screening bucket HVB series is characterised by its ease of use and high productivity even on mixed soils. It is



# PRODUCT NEWS

## HOW TO MAKE A PERFECT FLOORING



**DSM 250S**



**DSM 450**



**DSM 530**

### » DSM 250S – Subsurface preparation up to polishing

The new DSM 250S with pivoting grinding head for rimless grinding. The perfect addition to professional subsurface preparation and finishing of highly polished concrete and designer floors. Equipped with a water tank and continuous speed control for optimum wet grinding.

### » DSM 450 – Powerful professional grinder for medium-sized areas

The improved DSM 450 is available in three different variants: with/without speed control, water tank and as 230 or 400 V version. New compact design, speedily dismantled for simple, unproblematic transportation.

### » DSM 530 – Powerful professional grinder for demanding applications

The classic for medium to large working surfaces, for grinding and polishing concrete, natural stone and industrial flooring. Ideal for bush hammering concrete, screed, asphalt and renovation work.

**BeBoSa**

Visit us: 1B04 March 26–28, 2020

Made in Germany

Phone: +49 (0) 7161 2005 0 » [info@schwamborn.com](mailto:info@schwamborn.com) » [www.schwamborn.com](http://www.schwamborn.com)

 **schwamborn**

...gaining ground with us!





available in four models for 13t to 58t excavators, weighing 1,620 to 4,160kg. It is suitable for sorting through large amounts of soil in recycling, construction and demolition sectors, being designed to efficiently separate anything from soil to rocks.

The screening buckets come with interchangeable grid kits which, powered by a piston motor, quickly vibrate and let through all fines, with everything that does not pass through the alternated grid motion system staying inside the bucket allowing the user to dispose of all larger pieces. The centralised greasing system makes the maintenance process easier and prolongs the lifespan of the bucket. The bucket can be easily attached as it works on the hydraulic lines of the excavator. The bucket's design is compatible with, and can be mounted on all existing excavator makes and models.

#### **New generation of shaft screeners from MB Crusher**

MB Crusher's new MB-HDS shaft screener series features an ability to adapt to different types of work and materials. The screener selects and crushes excavation and demolition materials, asphalt, coal, organic materials, wood, bark and light plastics. With the MB-HDS screening bucket the rotating shafts can be changed on site by one person whilst its patented system keeps the rotating supports in place. The rotors can be removed and repositioned, while the angular alignment is kept in place.

The screening buckets are available in four models with shafts suitable for different material selection requirements. They can be installed on excavators, diggers, mini diggers and loaders (5t to 35t) for work on, construction sites, areas containing large pipelines, etc. The rotary shafts can be changed anywhere and also feature a centralised greasing system. All maintenance tools are located in a compartment, whilst an engineered automated shock absorbing hydraulic system reduces discharge so that the engine, transmission components and the machine boom do not suffer damage.

One of the screeners was used on the Wahle-Mecklar project in Germany, which concerns alternative



technologies for underground high voltage cables. The Dutch-German electricity transmission system operator TSCNET TenneT TSO demonstrated how to bury high voltage cables using green technology with a special ram driving the empty ducts into the ground and the shaft screener covering it. The unit was chosen as it allows the user to change shafts based on material directly on site.

#### **Cutter heads and screening buckets from Simex**

Simex has launched the new TFC 400 and TFC 600 continuous cutting double drum cutter heads, which are part of the large family of Simex cutter heads including 11 models of the TF, TFC and TFV series. Continuing cutting cutter heads offer the advantage of evenly milling material that needs to be profiled or excavated without leaving breaks between the two drums, or requiring the lateral movement of the excavator boom in order to mill residual surfaces.

The TFC 400 and TFC 600 cutter heads are designed for 6t–10t and 9t–12t excavators respectively. The TFC 400, with its 18.5kN cutting force, is an attachment that can excavate small trenches for utilities installation, profile concrete surfaces and remove tree trunks in agricultural or forestry applications. Its relatively small size, combined with the use of ultra-radius excavators, provides a productive attachment even in tight spaces. The TFC 600 is the more powerful of the two and is designed to take on heavier applications and with a cutting force of 24.5kN, it can be used to mill deteriorated layers of concrete structures, such as side

walls and roofs of tunnels, etc. The TFC 600 is suitable for profiling cut off walls and (thanks to its size and that of the prime mover it is coupled with) it can be used in urban settings to perform trenching for utilities installation, such as branches of sewer systems or aqueducts.

Additionally, Simex has introduced its new VSE series, which includes four buckets (VSE 10, VSE 20, VSE 30 and VSE 40) for 8t–45t excavators with load capacities ranging from 0.40m<sup>3</sup> to 1.80m<sup>3</sup>. All screening buckets feature easy loading, simple use and high productivity, and in addition, the Simex patent allows rapid size adjustment of the material to be screened in a few seconds via a control in the operator cab.

All Simex screening buckets enable output size adjustment even when emptying material loaded into the same bucket, without long downtimes or complicated mechanical procedures. The VSE range features rhomboid shaped elements with disks in varying diameters that make up the shafts. This specific shape of the tools produces an intense 'whirling' of the material. Additional tools offered by Simex also make this attachment suitable for non-demolition related applications, such as landscaping and waste treatment.

Simex crushers have been used to reduce the volume of asphalt slabs up to 100mm thick, specifically the CB and CBE crusher buckets, which can act as an alternative to mobile crushers. The crushers are able to perform the job thanks to their power, but often reduce the asphalt to a size too large for it to undergo any recycling. With new disks developed precisely for this application, the VSE screening buckets can reduce the material to a size appropriate for reuse. The solution also makes it possible to screen asphalt that is already an ideal size but, having accumulated for a long time, has recompacted due to compression or temperature.

The VSE 20 screening bucket was used for soil screening as part of a major renovation project in Trivulzio, Italy. The contractor Ripristina was renovating a farmstead in order to turn it into a residential and commercial complex. The VSE 20 was used for the screening of topsoil containing natural aggregate and demolition waste, a necessary procedure in order to create green areas in internal spaces. Like other attachments in the range, the VSE 20 has a patented mechanism making it possible to hydraulically screen the material in seconds. This includes an electric control situated in the cabin and once the rotation movement of the screening shafts is stopped, the operator can adjust the distance of the two shafts (with maximum travel of 30mm) in order to obtain an output size of 15mm–45mm. The screening bucket also has a 0.70m<sup>3</sup> capacity and a screening area of 0.80m<sup>2</sup>. The VSE 20 is designed to be mounted on 12t–18t excavators, and weighs 1.3t.



# When the demand is high.

**United. Inspired.**

Our CB Concrete Busters are designed for primary demolition of wide reinforced concrete structures. Two powerful hydraulic cylinders deliver virtually constant closing force. Concrete Busters are ideally suited for high-reach demolition jobs.

**[epiroc.com](http://epiroc.com)**





# POWER IS IN YOUR HANDS



NEW  
2020



NO  
VIBRATIONS



NO  
NOISE



NO  
DUST



NO  
SPARKS



NO  
SPLINTERS



GREEN  
PHILOSOPHY

**WWW.TEHMA.CH**

TEHMA SA Vicolo Concordia, 1 - 6932 Lugano Breganzona - Switzerland - T. +41 (0)91 210 31 82 - E. info@tehma.ch





March 10 - 14  
Stand S63356

## Demolition without limits

  
low noise

  
low vibration

  
low dust

  
eco-friendly



www.darda.de

Demolition tools made in Germany

## EISENWARENMESSE TO BE HELD IN COLOGNE

The next Eisenwarenmesse show is said to be more comprehensive than ever before with a wide variety of exhibitors displaying a wide range of products. The International Hardware Fair will be held from 1 to 4 March in Cologne, and as well as being a trade exhibition, it will include award ceremonies, presentations and special events. The exhibition aims to act as a show case for the latest

developments in the hardware industry, with the DIY Boulevard providing exhibitors with the opportunity to present their competencies and innovations in an authentic POS environment. With 62 participating companies from the construction, home and garden industry and an extended area, the Boulevard will be located in Hall 11.1.

[www.eisenwarenmesse.de](http://www.eisenwarenmesse.de)



## New dry cutting diamond tools from Tyrolit

With new features and a new design, but with the same trusted quality, the Austrian producer of grinding tools has unveiled its completely revised Premium dry cutting assortment.

Marking the beginning of a new decade, the Tyrolit diamond dry cutting assortment has undergone a complete changeover and is being tailored to meet current market demands. The Premium product range of dry cutting blades was the first to be brought up to date and has completely been revised with regards to product characteristics such as user friendliness and design. The results are mostly universally applicable tools for all common application areas, with increased performance up by 30%. Additionally all new Premium discs are in

compliance with OSA and the EN13236 regulations.

Within the framework of the assortment's changeover, the segments in TGD technology were revised significantly. An even more efficient diamond distribution and longer segments ensure the highest performance. On the other hand, the newly designed U-cuts of the conventional Premium dry cutting saw blades improve the cooling effect and the reduced segment surface increases cutting rates.

The new Premium dry cutting blades are available as of February 2020, and in the course of the year, the Standard and Basic product lines are also gradually being reworked. The complete revised dry cutting assortment will then be available in stores by spring 2021.

# airtec VISTAFLOOR®

## THE SMART TECHNOLOGY FOR SURFACE PREPARATION

### REMOTE-CONTROLLED GRINDING AND POLISHING MACHINE



**BS-825-RC**

- 3 Tool holders
- High operator comfort
- Excellent machine performance
- With water tank & extra weights
- Unique patented planetary system

### ROTARY SURFACE PREPARATION MACHINE

**BS-270**

- Gets close to the wall
- With speed regulation
- Removal of coating, paint, adhesives
- Light weight
- Works also on wood



### SELF-PROPELLED COMPACT SCARIFIER / MILLING MACHINE



**RM-320**

#### MILLING AND PLANING ON:

- Concrete
- Asphalt
- Premium-life cutters and drums

### SELF-PROPELLED SHAVER / PLANER WITH DIAMOND DISCS

**SM-320**

**NEW:** Roughening concrete road surfaces

- Trip hazard removal
- Driveway repair
- Surface correction
- Grooving
- Milling
- Finishing



*All machines with dust collection systems!*



**FOR SURFACE PREPARATION**  
www.airtec.ch - info@airtec.ch





**Cobra** *Cernos*



Come and see us  
at Conexpo-Con/Agg  
show in Las Vegas  
in OilQuick's booth  
F2876

# COBRA SCREENING BUCKETS

Stop wasting material and money, instead process, recycle or re-use on site!

- Multifunctional processing attachment for excavators, wheel loaders and backhoes
- Screening, crushing, sorting, separating, recycling, re-use, mixing, stabilizing, padding, backfilling and/or aerating simultaneously
- Processes industrial by-products like chalk or lime, demolition waste, frozen or lumpy materials, waste soil, soil, dirt, peat, etc.

*Cernos*

Ähtärintie 41 • 63700 Ähtäri • Finland  
+358 44 358 3112 Perttu  
+358 40 823 9734 Marko  
info@cernos.fi • www.cernos.fi





# Core business indeed

***For many professional contractors, diamond drilling is a core business in every sense of the word. Vertical drilling, horizontal drilling, overhead drilling, stitch drilling is what they do - day in and day out. To stay on top of their game, they need high performing and reliable equipment. That's where suppliers come to the rescue with their 'latest and greatest' solutions. PDi's Andrei Bushmarin reports the news from the core drilling industry.***

## **Husqvarna expands electric motor range**

Sweden based market leader Husqvarna has expanded its range of electric drill motors with the addition of two single phase 3.2kW models that combine the manufacturer's trademark user friendliness with increased sturdiness. Featuring a durable aluminium casing, the new DM 400 and DM 430 are designed for heavy duty applications. Compact design makes the machines suitable for work in confined spaces and narrow corners. The carrying handle, which also functions as an impact guard, is easy to remove for extra clearance in tight areas. The machines boast such familiar Husqvarna features as a LED load indicator, 'SmartStart' (half speed) button, and quick coupling to the new Husqvarna DS 500 stand. The three speed gearbox makes it easy to adjust rpm to the core diameter, which ranges from 55mm to 350mm in the case of the DM 400, and from 100mm to 450mm in the case of the DM 430. The air cooled heavy duty electric motor is built to withstand high loads without overheating whilst the durable carbon brushes are easy to inspect and replace. To protect the motor and gearbox in case of the core bit jamming, the machines are equipped with two independent systems, namely a mechanical friction clutch and the 'Husqvarna

Elgard' electronic motor overload protection. Both models feature the 'Embedded Connectivity' system - an enhanced version of Husqvarna Fleet Services - which harvests and analyses key performance indicators when in continuous mode. The DM 400 and DM 430 are available for shipment as of February 2020.

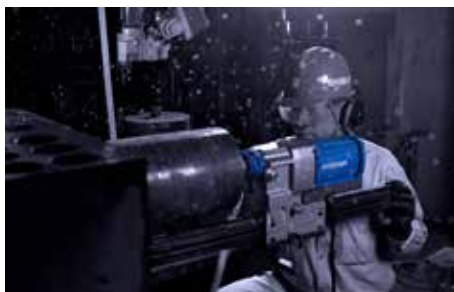
**[www.husqvarna.com](http://www.husqvarna.com)**

## **Shibuya extends the 'Blue-Drill' series**

Shibuya, a drilling and cutting machinery specialist based in Hiroshima, Japan, has added a new coring

system to its 'Blue-Drill' series launched in 2019. The system is intended for up to 250mm coring jobs and consists of the H2021 electric drill motor and the TS-255 rig. The redesigned motor has a rated output of 3,450W (220-240V), which represents a 95% increase in power on the forerunning R2021 model. Tripping has been minimised by adding a high capacity circuit protector, and the gears have been modernized without increasing the machine's overall weight. The system's other highlights include a built in on/off switch with motor overload protection, a multi position swivel water inlet and a portable residual current device (PRCD) that automatically shuts off electricity in the event of electric leakage. A water collection ring and a set of wrenches and Allen keys are included in the scope of supply. The AB52 swivel base is available as an option.

**[www.shibuya-group.co.jp](http://www.shibuya-group.co.jp)**



## **Tyrolit launches a new wet drill drilling system**

The new core drilling system DRS250 from Tyrolit-Hydrostress combines construction simplicity with a large diameter range. Designed for up to 250mm wet drilling jobs, the system features a powerful 2.5W drill





MANUFACTURER OF DIAMOND TOOLS AND MACHINES

***a professionals choice***

*made in Holland*

Modular drill stands for the professional  
**CNC PRECISION**



**NEW TECH drilling**  
*EXTREME FAST IN IRON*



**SPECIALIZED IN**  
*HOLLOW CORE SLABS*  
*PRE STRESSED CONCRETE*



\*

**DRILLING**

\*

\*

**SAWING**

\*

\*

**FACTORY**

\*



Meijer Diamond Tools

[www.meijertools.nl](http://www.meijertools.nl)

tel: +31 313 659555

email: [info@meijertools.nl](mailto:info@meijertools.nl)



motor and a two speed oil bath gearbox for efficient lubrication in every working position and optimal torque to speed ratio. The compact and lightweight construction guarantees easy handling and user friendliness. A mechanical overload clutch and integrated PRCD safety switch allow for operational safety while an optional vacuum plate simplifies machine set up.

[www.tyrolit.com](http://www.tyrolit.com)

### An ingenious drilling solution from Fast Verdini

A family owned company with a history of over 65 years, Fast Verdini from Italy specialises in manufacturing compact and lightweight equipment for demolition,

road building and general construction applications. Its latest core drilling system, the CT 300, was called a 'showstopper' at a construction exhibition in Toronto, attracting a major interest from the Canadian audience. Equipped with a 2.4kW three speed Weka drill motor (a 2.8kW two speed is also an alternative), the CT 300 boasts an innovative stand assembly, which is 360° rotatable (both vertically and horizontally) allowing drilling of walls, floors and ceilings from a single position on the floor. The drill motor features a differential circuit breaker incorporated in the power cable and a mechanical clutch to protect internal components. The drill feed is controlled via a hand wheel that can be fitted onto two different pins, which permits the operator to vary the feeding speed. The system is designed to operate with core bits ranging in diameter from 30mm to 400mm.

[www.fastverdini.it](http://www.fastverdini.it)

### Cuttronic is on a roll

Kaskod-Mtronix, the Estonia based manufacturer of high frequency drilling and sawing machines that made such a spectacular entrance at bauma last year, has kept on expanding its range with new additions. The manufacturer's next generation Cuttronic CM-10 drill motors featuring the proprietary 'ISRCdrive' technology is designed with high performance, reliability, safety and operator comfort in mind.

The new drills can operate in one or three phase mode. In the three phase mode, the motor continues to function even when one of the phases fails. The ISRCdrive technology with its advanced algorithms for motor control allows reducing the overall system cost while integrating motor, gearbox, and motor control system in one compact package. The 10kW rated output power (reaching 15kW at the peak) along with the durable changeable spindle gearboxes allow users to perform any drilling job in masonry and reinforced concrete in the 20mm to 1,000mm diameter range. Weighing in at 7.2kg/m (with 1,100mm and 1,980mm sections available), the stackable column is made of high quality materials is intended for heavy duty drilling applications. The motors feature robust extruded aluminium housing with high ingress protection rating (IP66) for use in harsh environments and wide range of working temperatures. Durable metal contactless buttons and switches are dirt and dust proof. Integrated safety elements, such as mechanical slip clutch for gearbox protection and overload protection, ensure safety and increase the motor's lifetime. More innovative core drill models with a built in auto feed system and remote control are slated for launch in the first half of 2020.

[www.kaskod.ee](http://www.kaskod.ee)







#### AGP unveils a new heavy hitter

The Taiwan based manufacturer of power tools AGP has beefed its portfolio of drilling solutions with a 2.5kW three speed drill motor designed for heavy duty tasks. Featuring an aluminium housing, the new DM8P is a versatile machine suitable for up to 202mm wet drilling in various materials. The motor maintains

constant speed even with heavy loads, thereby allowing for fast and efficient drilling, with a built in LED load indicator permitting users to run the drill at optimal efficiency. The Taiwanese manufacturer recommends using the DM8P in combination with the AS200 or S350 drill stand.

[www.agp-powertools.com](http://www.agp-powertools.com)

## **TOPTEC**

### **SPEZIALMASCHINEN GMBH**

**TOPTEC Spezialmaschinen GmbH**

**REMOTE CONTROLLED DEMOLITION ROBOTS**

Breithornstraße 10 · D-81825 München

E-mail: [info@toptec-germany.de](mailto:info@toptec-germany.de)

Tel.: +49 (0) 89 - 42 72 05 50



[www.toptec-germany.de](http://www.toptec-germany.de)



KERN-DEUDIAM Diamantwerkzeuge und Maschinen GmbH | Phone: +49 5257 507-0 | [info@kern-deudiam.de](mailto:info@kern-deudiam.de)

# ▶ ANTRAQUIP<sup>®</sup> CORP

Experienced, Innovative & Reliable

## HIGH PERFORMANCE, DELIVERED



visit us at  
BOOTH C20871

ROCK CUTTING



CONCRETE REMOVAL





FOR MORE INFORMATION CALL +1 (301) 665-1165 or visit [www.antraquip.net](http://www.antraquip.net)

 Follow us and Stay Updated  
[facebook.com/Antraquip](https://facebook.com/Antraquip)

## THE ULTIMATE DEMOLITION CONTRACTOR'S ATTACHMENT

CONTROLLED DEMOLITION • REINFORCED CONCRETE CUTTING • MAKING THE AQ DEMOLITION SERIES THE ULTIMATE ATTACHMENT



**Booth F101901**  
March 10-14

**SaMoTer**

**Hall 10, Booth R2**  
March 21-25

**BeBoSa**

**Booth 2D43**  
March 26-28

# OUR KIND OF PLAYGROUND

This is the natural habitat for Brokk's compact giants. With the perfect combination of power, operability and accessibility our demolition robots provide efficient solutions to increase profits.



# NEW FACTORY HAS ROCKSTER IMPACTOR ALREADY IN ACTION

The first Rockster impact crusher, R1000S, from its new factory in Neumarkt (Upper Austria) is already working hard in Styria. Together with a RSS410 scalping screen, the machines have proved to be an extremely efficient combination in the processing of rubble and natural stone.

Since 1994, Hopf Bagger KG from Gaal (Austria) has specialised in earthworks and forestry. Ten years ago, Martin Hopf became CEO and the main driving force behind a small yet efficient team. The existing business areas were expanded and additional segments, such as pipeline construction and the processing of building waste and natural stone were added to the company's competencies. A current project undertaken by Hopf is an area of 2.4h that is now being prepared for 23 building plots of houses. All work has been done with the company's own equipment, with the Rockster scalping screen RSS410 having already proved its worth. "Thanks to the mobile screener, we can process all the excavated material from the construction site and repurpose it again immediately," says Martin Hopf.

## Crusher and screener combined

"It has always been my philosophy to recycle the excavated or demolished material from our construction

sites and to reuse it on site. Our two Rockster machines enable us to do exactly that. So far, we've been using rental equipment, but with my own fleet, I'm a lot more flexible, which has been a concern for me for a long time," says Martin. In mid-November, he was handed the very first impact crusher from the new Rockster factory in Mühlviertel and was immediately impressed by the commissioning and excellent crushing performance of the R1000S. "Although we are crushing extremely rough gravel here, the cubic end material that we get with the crusher is perfect. We are still in the initial phase and will continue to test all setting parameters, but at the first day of operation, we were crushing 138tph to 0/32mm. This is an astounding performance."

"The R1000S is a well-designed and finely constructed machine that can optimise the crushing process with ease and great accuracy. The engine compartment is easily accessible and the components are not too complicated," says Rockster sales manager Norbert Feichtinger who adds: "During the development of each Rockster crusher, we put great effort and importance to engine accessibility. If the engine is easily accessible, maintenance will be easier. It will be done regularly and most importantly it's cost effective. All of these add to the longevity of our machines where quality is our number one priority."

The RSS410 can be either used as pre-screener or classifying screener.



## Kemroc cutter wheel in Bad Cannstatt Rapid helps with long term drainage solution

During excavation of a tunnel on the regional railway line at Bad Cannstatt, Germany, a permanent drainage system had to be installed to protect 'lenses' of gypsum located in the clay from the possible ingress of groundwater. For this purpose, seven dam rings were installed as groundwater barriers, with control drainage channels at either side of them. The slots that were required were cut into the injected shotcrete using a Kemroc DMW 130 cutter wheel.

While excavating the railway tunnel at Bad Cannstatt as part of the Stuttgart 21 project, the contractors came across some unexpectedly difficult geological conditions. For about 1,000m of the 3.8km long tunnel, both tunnel tubes had to pass through two anhydrite lenses with a compressive strength of approx. 60 to 90MPa. Anhydrite can swell in contact with groundwater and cause severe long term structural damage to the tunnel. For this reason, protecting vulnerable areas against the ingress of water became a high priority.

The plan was to install seven dam rings (groundwater barriers) and 13 drainage channels to control the flow of water immediately before and after each ring. The installation of each ring required a slot, 600mm deep by 500mm wide, to be cut into the outer tunnel wall which was made of a grade C 35/45 shotcrete with double matting reinforcement type Q257A. Additional slots, 400mm to 600mm deep, were cut on either side of the central slot using a Liebherr R924 T tunnel excavator with a Kemroc DMW 130 cutter wheel.

Using the cutter wheel enabled the work to be carried out with extreme precision and in a cost effective manner. Plant manager, Mr. Peter Göbel, stated: "If we had used a conventional drum cutter, we would have had to excavate more material than necessary. By using the cutter wheel, we have broken out precisely the amount that was required which has major economic benefits since we do not get paid for any additional, unplanned work. In addition, we made savings on the extraction and disposal of excavated material as well as the shotcreting costs. Wear costs for the cutter wheel also acceptable."





# What's new in 'hand held'

***In this year's edition of PDi Magazine's special feature on hand held equipment for concrete cutting and demolition, we take a look at the latest products of 2020. This year sees ring saws, a battery powered core drilling system and much more.***

**T**he BS-310 Amiga floor grinder from Airtec weighs only 35kg and is suitable for grinding, abrading, cleaning, levelling imperfections and removing tough accumulations (such as adhesives, tapes, old coatings, paint and mastics). The machine is easy to operate because of its low weight and features a brushless electric motor with overload protection. The machine also includes a suction pipe for a vacuum cleaner, with the suction of grinding dust and particles being a result of the design of the dust hood with two openings. Other features include a handle assembly equipped with hand levers, height adjustment and security button (on/off), an ergonomic eight-cornered body with air slots for the electric motor and water level for flatness control, as well as a protective rubber band to retain dust production. An opening for edge grinding along vertical surfaces and walls enables stand up work. The machine also features

a working angle adjustment and rubber wheels with its foldable construction facilitating the easy transport of the machine. Some of the applicable diamond discs for use include BS-310-420 (soft bond, hard surfaces), BS-310-421 (medium bond, medium surfaces), BS-310-422 (hard bond, soft surfaces), BS-310-423 (soft bond, PCD, thick coatings, difficult grindings) and BS-310-520 (hard bond, PCD split, soft surfaces).

Another development from Airtec is the surface cleaner Roto-Chipper RC-1500, which can be used for cleaning, paint stripping, coating removing, etc. The surface cleaner has a dust free operation and double insulated motor. The dust hood allows for an environmentally friendly operation, both in and outdoors. The RC-1500 features quick adjustment of cleaning depth, fast change of cutters and suppressed radio and TV interference. Applications include blasting off rust, scale and paint from hard surfaces such as metal and concrete, preparing surfaces for epoxies or new toppings and removing grime, to name but a few.

NT to withstand the requirements of the construction site. Furthermore, the machine is impact resistant and well protected. Due to its short design, this machine can be used for drilling in narrow and difficult to access areas, such as pits.

The durable 2,300W motor with optimised air cooling has ventilation in its housing and high power reserves. The three speed oil bath gearbox enables a large drilling range with optimal torque speed ratios and, thanks to a special oil pump, guarantees a permanent lubrication in different working positions. A connection for a centring rod is integrated in the drilling spindle. For stand operated drilling, the drill rig BST 182 V/S together with an adapter for collar mounting Ø 60mm is also available as a set version. Other features include soft-start, temperature control and overcurrent cut off, overload indication, ergonomic handle with a large dimensioned switch button, PUR construction site cable and integrated levels.

## **Milwaukee launches battery powered core drilling system**

At its major product launch event in Europe, Milwaukee launched a battery powered core drilling system for core drilling with diamond tools in reinforced concrete up to a diameter of 150mm, a battery operated power cutter for blades with a diameter of 350mm and a battery operated chiselling machine. The series is called the 'Milwaukee MX Fuel' and consists of zero emission machines. The series also includes a battery powered lighting mast and a battery powered drainage machine. The overall properties are no exhaust fumes, no hassle with starter cord and start up, no gasoline/oil mixture, no engine

## **Wet-dry diamond core drilling machine from Eibenstock**

In spring 2020, Elektrowerkzeuge GmbH Eibenstock will launch a new wet-dry diamond core drilling machine in its premium segment 'PowerLine'. The powerful PLD 182.1 NT allows dry drilling in sand/lime brick, brickwork, clinker and other abrasive materials as well as wet drilling in reinforced concrete, natural stone and asphalt up to a drilling diameter of 182mm (brickwork up to 202mm). A special feature of the machine is the robust and compact die cast full aluminium housing with a new ergonomic design which allows the PLD 182.1





**DCC-65-C**  
EXCHANGEABLE TIPS AND  
LONG CUTTING EDGES.

# DEMAREC DCC-SERIES 2-CYLINDER CONCRETE CRUSHERS

**DemaPower<sup>2.0</sup>**  
system

**25% MORE POWER AND FAST CYCLE TIMES  
ACHIEVES A PERFORMANCE EQUIVALENT TO  
CRUSHERS TWO SIZES LARGER.**

**In the end... It's only about the right tool**

DEMAREC. De Hork 32, 5431 NS Cuijk, the Netherlands. Tel.: +31 (0) 485 442300, [info@demarec.com](mailto:info@demarec.com)

DEMAREC Deutschland. Im Rohnweiher 14, D-53797 Lohmar, Germany. Tel.: +49 2205 92027 0, [info@demarec-deutschland.de](mailto:info@demarec-deutschland.de)

KINSHOFER UK. 4 Milton Industrial Court, Hors eld Way, Bredbury, Stockport, Cheshire, SK6 2TA. Tel.: +44 (0)161 406 7046, [sales@kinshofer.co.uk](mailto:sales@kinshofer.co.uk)

KINSHOFER USA. 6420 Inducon Drive - Suite G, Sanborn, NY, 14132. Tel. +1 (716) 731 4333, [sales-usa@kinshofer.com](mailto:sales-usa@kinshofer.com)

KINSHOFER Canada. Mainway Drive, Unit #11 - Burlington, ON L7L 7G5. Tel. +1 (905) 335 2856, [sales-northamerica@kinshofer.com](mailto:sales-northamerica@kinshofer.com)



[demarec.com](http://demarec.com)



maintenance and the same power as gasoline and cord powered construction machines, but with significantly less weight. The equipment may be used indoors in closed spaces without the risk of harmful emissions.

All machines in the MX Fuel series are powered by the 'Max Fuel RedLithium battery'. The batteries are patented with features such as protection against fall damage, vibration, water and extreme temperatures. The battery is equipped with 'RedLink' electronics that allow the battery, machine and charger to communicate with each other to create optimum performance and battery life. MX Fuel's RedLithium battery has been developed in collaboration with leading battery cell developers and tested at Milwaukee Tools' own battery laboratory. Milwaukee has two battery sizes for the MX Fuel: the MXF XC406 which has a capacity of 6.0Ah and can be fully charged in 90min. It is equipped with battery indicator, RedLink technology and is compatible with Milwaukee's 'One Key' system - a digital system facilitating tracking, handling and customisation. The MXF CP203 can be fully charged in 45min with battery capacity of 3.0Ah, with a charger also being available, the MXF C.

The MXF COS350 MX Fuel 350mm power cutter is said to be the world's first handheld battery operated power cutter for 350mm blades with power to cut reinforced concrete. The MXF DSD150 MX Fuel 150mm diamond drill is said to be the world's first battery powered diamond core drill system capable of drilling holes up to 152mm. The MXF DH2528H MX Fuel 25kg Jackhammer provides high impact energy with lower vibrations than other hammers on the market with cord, gasoline or pneumatic power. The MXF TL MX Fuel lighting mast is equipped with 'TrueView' high definition light source with 27,000lumens at mains connection (AC) and 20,000lumens at battery operation for both directional and area lighting. Other news from Milwaukee include the battery operated concrete cap M18 FCOS230-0, the battery operated cutter/gear saw M18 FMS305-121, the diving gun M18 FN18GS-202X, the drill machine M18 ONEPD2-502X, the new tiger saw M18 ONESX-0 and new plant lighting M18 ONESLS-0.

## Baier dry coring from ø30mm to ø250mm

Baier now offers the BDB 825 from up to ø160mm and the two gear dry coring machine BDB 829 with a maximum diameter of ø250mm. With a vacuum cleaner, the soft impact system and the new titanium 2.0 core bit, the Baier machines are suitable for dry cutting in concrete with rebar, granite, natural stone, nuclear power plants, etc. Stuttgart based Baier has been producing power tools for over 80 years and exports its products to over 60 countries. Baier began developing a dry coring range in the 1990s, but was then mainly targeting electricians and sanitary craftsmen. In the late 2000s, however, Baier began developing dry coring for specialised use.

## 378 concrete sprayer from Solo

Solo has updated its construction compression sprayer, the 407-CI. The '378 Concrete Sprayer' has replaced the 407-CI with new features designed to improve stability and durability. Solo has built its construction compression sprayers to withstand the harsh chemicals used in the construction industry without affecting the integrity of the tanks, pumps and seals. Tanks are translucent and easy to fill, making it easy to gauge content levels. The 378 comes fitted with a 1gpm, 110° flat fan nozzle which allows users to spray higher solid content curing compounds and stains. Jet stream, hollow cone, and



plastic adjustable nozzles are also included for general purpose spraying.

Solo makes its construction sprayers out of high density polyethylene, a hard wearing plastic that, in contrast to the metal sprayers often used in the industry, does not dent, corrode or crack. These sprayers are made to survive harsh conditions and save the end user money as it, according to Solo, curbs equipment wear and tear and is less expensive than metal sprayers.

Solo's 378 retains all the features that made its 407-CI popular. The 378 keeps features like the unbreakable wand and robust HDPE tank. Both sprayers share the same opening size that allows for easy filling and thorough cleaning and the same hose for extended reach. Both sprayers help improve productivity with a commercial grade shut off valve with a lock on/off feature designed to reduce user fatigue. End users can pressurize the 378 faster with an air inflation valve using a compressor or air source. Additionally, the concrete sprayer features a stable base for stability. Users can also attach a wheelset and pull handle accessory for greater mobility, with the sprayer including Viton seals throughout for enhanced durability.

## New ring saw from Tyrolit

Tyrolit has introduced a new ring saw, HRE410, an addition to the WSE1621 wall sawing system, for wall

and floor cuts. This electric ring saw comes with intelligent ergonomics and enables work without overcuts. With cutting depths of up to 300mm, this new ring saw offers an alternative to corner drilling or diamond chain saws. Both its handles can be adjusted, with the rear handle being able to be rotated by 90°. It features a 6.5kW motor with P2 high frequency technology and an overload and excess temperature display. Water intake can be controlled directly on the handle.

Another new product is the revised Tyrolit 'Premium' dry cutting assortment with new product characteristics and design. All new Premium discs are in compliance with OSA and the EN13236 regulations. Tyrolit states that the newly designed 'U-cuts' of the conventional Premium dry cutting saw blades improve the cooling effect and the reduced segment surface increases cutting rates. In the course of 2020, the 'Standard' and 'Basic' product lines will also be gradually reworked. The new Premium diamond dry cutting blades include 'DCU in TGD Technology', 'DCU' (for tackling various tasks with one durable disc), 'DCE-SILENT in TGD Technology' (noise damped and universal), 'DCU-Fast Cut', 'DCH in TGD Technology' (for cutting hard stone), 'DCH' (for clean and break out-free edges), 'DCH-Fast Cut' (the fast cutting version of the hard stone disc), 'DCC' (for concrete), and 'DCA+C' (for hard line cutting of asphalt and concrete).



**NEW**

- ▶ Construction Material
- ▶ Reinforced Concrete
- ▶ Granite

**+ CAST IRON  
METAL IRON**



# **INCISOR**

**Carbodium INCISOR.02**

***Gets even better  
with INCISOR.02***

- ▶ 10 mm Full Diamond Height
- ▶ Tear drop segments for less friction
- ▶ Notoriously Successful Incisor Design
- ▶ Extremely Safe and Reliable
- ▶ The Global Solution in Dry Cutting



**Your global solution manufacturer**





**MILWAUKEE'S**

# PARADIGM SHIFT

**B**attery powered hand tools are basically dominating the construction site today. The development of the batteries has been rapid and they have become smaller and more powerful, safer with less risk of overheating with fire risk, being able to be charged to full strength in just under an hour.

## Battery driven machines for the professionals

To date, batteries have only been suited for small tools, or so it was thought. Among the heavy duty users such as concrete cutters, demolition contractors, or those who work with heavy hand held cutting machines or chisel hammers, the prospects for battery operation and lighter machines were not hopeful. Professional concrete cutters and demolition contractors have perceived that it is virtually impossible to battery power professional core drill systems, full size power cutters and chiselling machinery. Batteries using current technology would be too big and heavy.

However, the manufacturer Milwaukee, owned by Techtronics Industries, has changed perceptions and at a major product launch event in Europe, a battery powered core drilling system was introduced. This is designed for core drilling with diamond tools in reinforced concrete up to a diameter of 150mm, and was launched along with a battery operated power cutter for blades with a diameter of 350mm and a battery operated chiselling machine. For geeky journalists in the construction

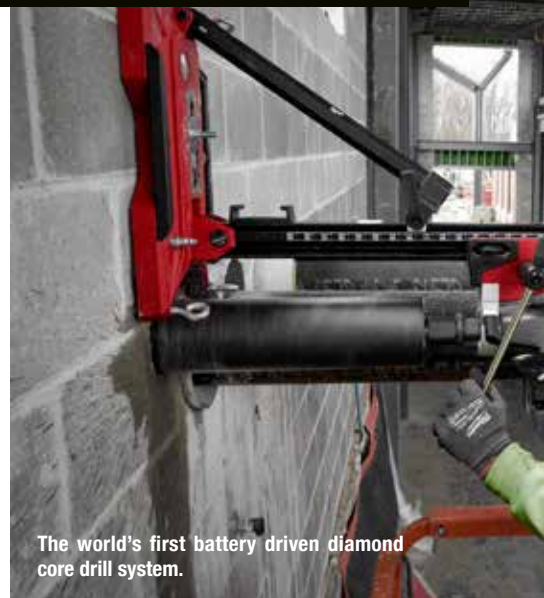
*What the industry did not think would happen for several years has happened with the release of the world's first battery powered professional diamond core drilling, a full size power cutter for reinforced concrete and a powerful jack hammer.*

industry this is a huge breakthrough, a real paradigm shift for battery power driven hand tools and machines.

## New MX Fuel Series

A new and revolutionary series, Milwaukee MX Fuel, delivers many benefits including zero emission machines and includes a battery powered lighting mast along with a battery powered drainage machine. The series has no exhaust fumes, hassle starter cord and start up, gasoline/oil mixture or engine maintenance, yet provides the same power as gasoline and cord powered construction machines but with less weight. In addition, the equipment can be used indoors in enclosed spaces without the risk of fumes.

All machines in the MX Fuel Series are powered with the same battery, the 'Max Fuel RedLithium' battery. This has been patented with unique features such as protection against fall damage, vibration, water and extreme temperatures. The battery is equipped with 'RedLink' electronics that allow the battery, machine and charger to communicate with each other to create



The world's first battery driven diamond core drill system.





Easy battery exchange.

optimum performance and battery life. Its high performance and high quality lithium-ion technology has been developed in close collaboration with the world's leading battery cell developers and tested at Milwaukee Tools' own battery laboratory.

Milwaukee has two battery sizes for the MX Fuel Series with both batteries fitting all machines in the series. The largest, the MXF XC406 has a capacity of 6.0A/h and can be fully charged in 90min. It is equipped with battery indicator, RedLink technology and is compatible with Milwaukee's 'One-Key' system - a digital system to facilitate tracking, handling and customisation in the workplace. The smaller battery, the MXF CP203, has the same characteristics as the larger one and can be fully charged in 45min, with capacity of 3.0A/h as well as a MXF C charger. All products in the series are equipped with a carbon brushless 'PowerState' motor, RedLink Plus electronics and RedLithium batteries and are compatible with the One-Key system.

#### **MXF COS350 MX Fuel 350mm power cutter**

This is the world's first handheld battery operated power cutter for 350mm blades with enough power to cut reinforced concrete, starting in a few seconds, with cutting beginning immediately. Should something happen that risks the user's safety, such as the machine hitting the face, the 'RapidStop' function stops the blade immediately, with a blade guard cover preventing blade exposure. The machine has 'petrol powered performance' with a maximum speed of 5,350rpm and



Powerful battery driven jack hammer.

125mm cutting depth. The machine is quiet with low vibrations and well balanced weight. It has a tool free burst cap and built in wet cut tubing compatible with Milwaukee's M18 'Switch Tank' water spray tank, which is also battery operated with no pumping required. The machine is equipped with safety features that eliminate it from 'hitting the face' in the wrong use, simply switching off before anything happens. When the machine is switched off, the blade stops immediately and does not stand and spin as with a petrol powered cutter. It may be accompanied by Milwaukee's recently launched new blade series trolley.

#### **MXF DSD150 MX Fuel 150mm diamond drill**

What is said to be the first battery powered diamond core drill system, which is capable of drilling holes up to 152mm, has also been introduced. This has a considerably shortened set up time, making core drilling so much easier. Performance is the same as for cord powered machines and drills both dry and wet, with the machine having two gears with laser etched speed and capacity markings on the metal housing. Speed 1 is for up to 75mm diameter wet and dry drilling at 1,600rpm, whilst Speed 2 is for between 76mm to 152mm drilling at 800rpm. The machine is equipped with an 'Autostop' clutch, which provides protection thereby preventing overstressing if the drill is stuck. Other features include a spirit level sensor, built in pressure gauge to optimise speed, built in battery indicator and built in stroke connection compatible with the M18 'Switch Tank' with a battery powered water pump. The drill mount fits most core drills with a friction disk, enabling easy core drill replacement. The machine fits most drill racks, but Milwaukee has also developed its own, MXF DR255TV with a 60mm collar. All machines are equipped with carbon brushless motors, with an auto feed to be expected in the near future.

#### **MXF DH2528H MX Fuel 25kg jackhammer**

Milwaukee's new battery powered jackhammer provides high impact energy with lower vibrations than hammers with cord, gasoline or pneumatic power. The machine can handle 12m of chiselling per charge, has a 28mm chisel and, according to Milwaukee, delivers the same



Efficient flood light.



Milwaukee ONE-KEY System.

power as gasoline, electric cord and compressed air driven machines. The hammer provides 64J impact energy and is well suited for tough demolition work, even indoors in confined spaces thanks to zero emissions. 'Floating Body' anti vibration technology makes it possible to work all day without being exposed to harmful vibrational damage. Its low vibrations of 5.17m/sec<sup>2</sup> allow 7h of continuous productivity with the jackhammer delivering 1,300blows per/min being able to chisel up to 2t or a 12meter long (200mm deep and 300mm wide) chute on one MXF XC406 battery charge. The service life of the jackhammer corresponds to cord driven machines and is highly service friendly, with a service light indicating when grease should be added (every 40h or so).

#### **MXF TL MX Fuel lighting mast**

Effective and powerful lighting in the workplace is an obvious necessity on construction sites. There are a plethora of suppliers but many light sources are powered by diesel or gasoline and cannot be used indoors. Milwaukee's new battery operated lighting tower is lightweight and quickly set up in the workplace. It is equipped with 'TrueView' high definition light source for both directional and area lighting. The lamp elements can be adjusted in different directions, with the tower having high mobility with two large wheels and can handle tough going. Set up time is only a few seconds with the mast being able to be raised up to 3.10m and being able to withstand wind speeds of up to 55km/h.

#### **And more news**

Another new release is the battery operated concrete cap M18 FCOS230-0 which can be used with blades up to 230mm. Also new is the battery operated cutter/gear saw M18 FMS305-121, the diving gun M18 FN18GS-202X and the drill machine M18 ONEPD2-502X along with a new M18 ONESX-0 'tiger saw', which Milwaukee was the first to launch, and new M18 ONESLS-0 plant lighting. Later in the year a number of other new battery powered machines will be launched.

Milwaukee in Sweden will exhibit at the Demcon fair in Stockholm in September, showing and demonstrating the new battery powered MX Fuel Series.







## CAMS UTM 1500-3 NOW AVAILABLE IN NORTH AMERICAN VERSION

Cams' UTM 1500-3 mobile crushing and recycling plant has now complied with the US safety regulations. This is among the first products developed by the Italian company more than 20 years ago, with the US and Canadian compliant version being recently introduced.

Cams' products are entirely Italian made since the company began in 1964, with the company today a major manufacturer of aggregates recycling equipment. It has nine separate product ranges comprising of 24 different models. It also offers bespoke solutions and customisation, providing a choice of plants that shred, screen and recycle asphalt, construction and demolition waste, glass and aggregates.

Conexpo/Conagg 2020 will provide an opportunity for Cams to further introduce its products and technology to North America. Thanks to cooperation which began more than one year ago with the American company GrinderCrusherScreen, Cams will exhibit the UTM 1500-3 that follows US standards. The UTM 1500-3 is equipped with a John Deere 208kW engine, providing up to 200tph of productivity. Despite the

power of the shredder, it is compact and light weight for easy road and container transportation.

The Italian company has developed a particular system of hydraulic fingers that helps to reduce large sized material and avoid the loss of material from the hopper during processing. This also enables a greater volume of material to be recycled. This feature has a Canadian patent (CA3008568) and a USA published patent (US2018345293).

With the availability of 'Industry 4.0' enabling technologies and the internet, Cams plants are now 'smart' and interconnected through two way communication between the machine and the job site. They are also equipped with a GPS system meaning that it is possible to check location, machine status and to run the diagnostics remotely from a PC or mobile App. Additional features found on of the new version of the machine include a multi-colour lighting system that provides operational status indication of the plant. Cams plants are designed for efficiency, minimising negative environment impact, using hybrid technology to reduce fuel consumption.



## Baier delivers state of the art dry core drilling

Located in Stuttgart, Germany, Baier has produced high quality power tools for over 80 years. The company now exports to over 60 countries and is said to be a worldwide leader in quality and innovation. As part of its offering, it has developed a dry coring system which dates back to late 2000. As dry coring has become more important, the properties of the Baier system have also become more important in providing satisfactory result in the shortest time.

Baier's dry coring efficiency can deal with virtually anything it encounters and used with a quality vacuum cleaner, the unique soft impact system and the new Titanium 2.0 core bit, means that Baier machines can easily dry cut through concrete with rebar, granite and all kinds of natural stone. This has made the offering ideal for use on projects at nuclear power plants. New releases for Baier's offering includes the BDB 825 ø160mm and since April 2019 the two gear dry coring machine BDB 829 with a maximum diameter of ø250mm.

## Introducing the AGP C18 brushless concrete saw and DM8P wet drilling motor

Introduced under the tagline of 'your strongest tools for professional sawing and cutting', the AGP C18 concrete saw uses a 450mm saw blade and is equipped with a 6500W high frequency permanent magnet synchronous motor delivering up to 175mm depth of cut. The high frequency brushless motor is said to offer outstanding efficiency close to 90%, a major improvement from the 60-70% delivered by traditional motors.

Amongst the many features found on the saw is its flush cut capability that allows cutting alongside wall edges. To use the flush cut the blade guard comes with

easy toggle latches providing quick conversion to the mode (a flush cut kit is necessary for using this feature). User centred ergonomics are used as the saw features guide rollers which maintains stability while cutting perpendicularly. The rollers also make cutting easier providing weight borne reduction to aid the operator.

Also new from AGP is the DM8P three speed wet drilling motor which is a 2500W drilling machine designed for heavy duty users. It is made of an alluminium construction for drilling up to 202mm, providing high levels of versatility. The motor works in constant speed, with its features enabling

the maintaining of the same rpm even under heavy loading, which allows for fast and efficient drilling.

Other features includes AGP's signature LED load indicator, which gives the operator instant load information, allowing the tool to run at optimal efficiency. 'Shining' green means the motor is energized and that the tool is operating within normal load and temperature limits. Red 'flashes' means that the motor is close to overloading, whilst 'shining' red means overloaded or overheating. The use of such easy to follow features has proven to greatly reduce the chances of overloading.

# Hydrodemolition **advantages**

with Aqua Cutter® robots

**25X FASTER**

THAN HAND HELD  
JACKHAMMERS AND

**3X QUIETER**

**VERSATILE  
APPLICATIONS**

**UP TO  
1,5 M³  
PER HOUR**

**APPROVED FOR  
EN 1504  
EUROPEAN STANDARDS**

**30%  
LABOUR  
SAVINGS**

**LESS INTERFERENCE OF  
INFRASTRUCTURE**

ELIMINATES  
**MICRO  
FRACTURES**

**TOTAL CONTROL  
UP TO 3000 BAR  
FOR ANY DEPTH**

**VIRTUALLY  
ELIMINATES**  
SILICA DUST EXPOSURE

**REBAR  
CLEANED**  
WITHOUT DAMAGE

**UP TO 3X  
EXTENDED LIFE**  
CONCRETE REPAIRS

**SUPERIOR  
SURFACE BONDING**  
CLEANS AND DESCALES  
REBARS IN ONE PASS



See us with Brokk  
at booth F101901

**Come meet us!**





## THE US 'MEGA SHOW'

# CONEXPO/CONAGG IS BACK AGAIN

***The US mega show Conexpo/Conagg will be held from 10 to 14 March at the Las Vegas Convention Center in the USA, being organised as ever by the American industry association AEM (Association of Equipment Manufacturers). This article will provide you with an overview what to look at if you are specifically interested in demolition, concrete cutting, recycling and remediation.***

**C**onexpo began in 1909 in Columbus, Ohio, with the first Conagg being held in Detroit, Michigan in 1928. In 1968 the two shows merged, with the first joint exhibition being held in Las Vegas, Nevada the same year. Conexpo/Conagg has gone on to become the western hemisphere's second largest show for the construction

and construction materials industries after bauma in Germany.

Currently the construction industry in the US is experiencing a sharp upturn. The country's infrastructure has been neglected for a number of years and now the US government has invested billions of dollars in the road network, bridges, viaducts and so forth. This



will not only benefit large construction and civil engineering companies, but many smaller subcontracting companies as well.

#### Same numbers as in 2017

There are set to be 2800 exhibitors at this year's show, which is approximately the same number as in 2017. Although the fair has a strong domestic character with over 75% of exhibitors being American, it is also an important show for many foreign manufacturers, especially from Europe and East Asia. It is difficult to estimate the number of visitors that will come to the show at present, but in 2017 128,000 people visited the show. Then the US market had begun its upturn, but uncertainty was

high, with some restraint as a result, especially given the election of a new President Donald Trump.

Trump is no less controversial today than he was upon his election, but he seems to have a positive impact on the construction industry. However, the introduction or increase of trade tariffs has had a negative effect on the market, which will perhaps be played out at the show with fewer exhibitors from Asia. Another factor that can affect both the number of exhibitors and visitors is the spread of the coronavirus. At present, however, there are no stated restrictions for visitors coming from China.

Las Vegas, the city that never sleeps, will most certainly be filled by business people from near and far who want to check out the latest news and try their luck



# Date: 10 to 14 March, 2020

## Show Hours

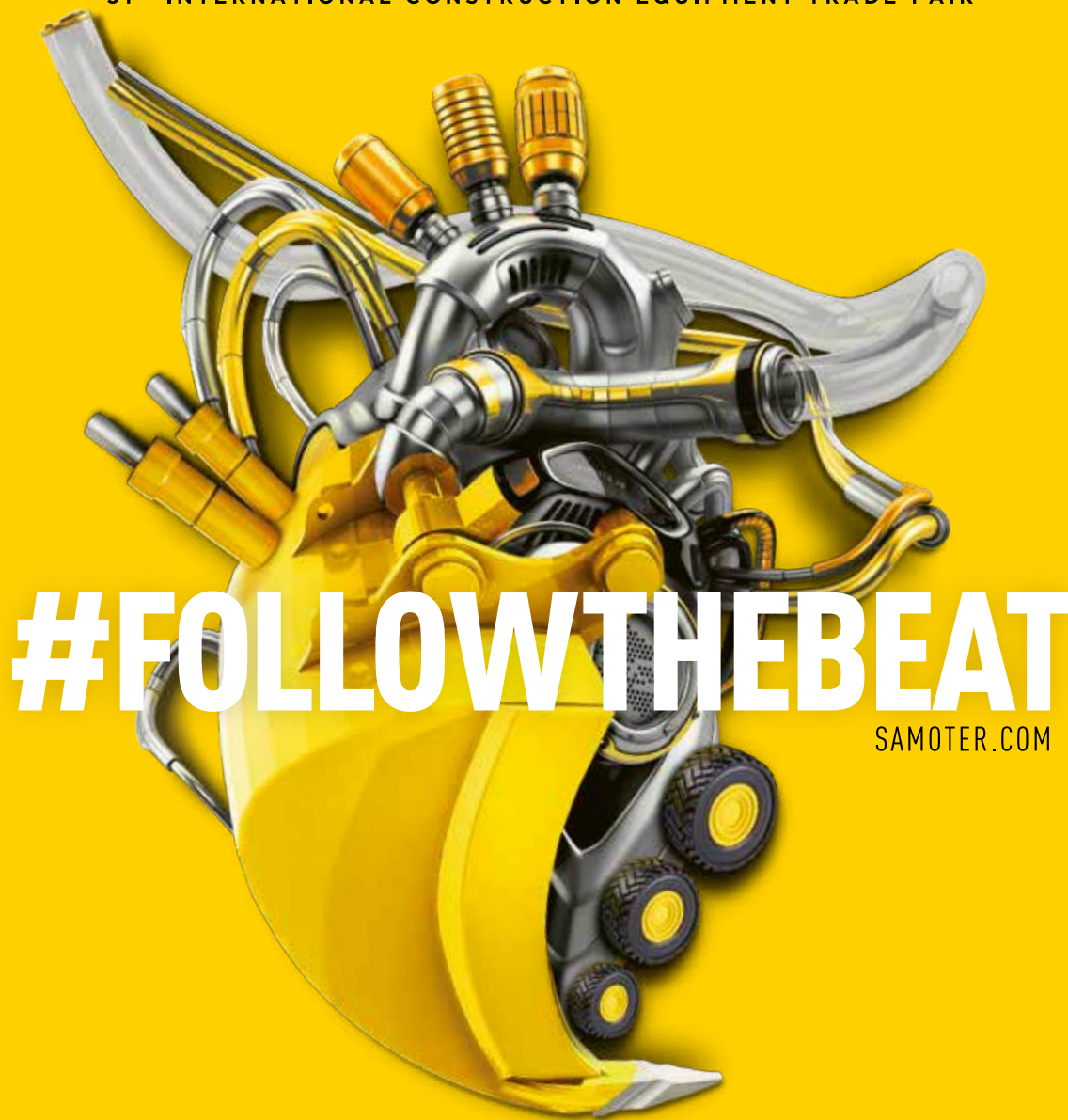
• Tuesday - Friday: 9am - 5pm • Saturday: 9am - 3pm

• 2,800 exhibitors • 2,500,000<sup>2</sup> feet of exhibition space • 150 education sessions



# SaMoTer

31<sup>ST</sup> INTERNATIONAL CONSTRUCTION EQUIPMENT TRADE FAIR



# #FOLLOWTHEBEAT

SAMOTER.COM

DDMAADVERTISING.COM

*VERONA, ITALY 21.25 MARCH 2020*

- THE HEART OF CONSTRUCTION EQUIPMENT PULSES IN ITALY -

PARTNER

**CCE**  
COMMITTEE FOR EUROPEAN  
CONSTRUCTION EQUIPMENT

CO-LOCATED WITH

**asphaltica**  
asphaltica.it

VERONAFIERE.IT



Organized by  
**veronafiere**  
Trade shows & events since 1898





at one or some of the many casinos in town. If you are one of those traveling to Las Vegas in March you will find, next to this text, some information about opening hours and how the fair is divided into different zones and exhibition areas. There is also a selective list of some of the exhibitors with a strong connection to demolition, concrete cutting, recycling and remediation.

### Busy first quarter in terms of exhibitions

The first quarter of this year is quite exhibition intensive,

especially in the US. In early February, the annual World of Concrete Fair was also held in Las Vegas. The show is more focused on concrete equipment and the products shown are 'lighter' as a rule, whilst Conexpo/Conagg has a clear focus on the 'heavy artillery' of machinery and tools. It is also clear that in years when Conexpo/Conagg is held, World of Concrete loses both exhibitors and visitors. That was certainly the case this year (you can read about WOC on page 78-81 of the magazine). A couple of weeks following Conexpo/Conagg, the pan-European

SaMoTer show will be held in Verona, Italy. This is similar to Conexpo/Conagg but is considerably smaller. At present, 450 companies have chosen to exhibit at the show.

PDi Magazine will have four of its reporters circulating during Conexpo/Conagg for the whole show week. If you would like to pick up a copy of PDi Magazine you find it in publication bins at the main entrance to the show. I hope you enjoy Conexpo/Conagg 2020 and Las Vegas.

[www.conexpoconagg.com](http://www.conexpoconagg.com)







HG HYDRAULIC GENERATOR

POWERED BY HYDRAULICS

THE NEW

# SUPER COMPACT MODELS

TO BE SHOWCASED AT CONEXPO 2020

## STAND F1548

TO BE SHOWCASED AT SAMOTER 2020

## STAND G1 HALL 10

SCAN ME



GENERATOR  
VIDEO

### HYDRAULIC EQUIPMENT FOR MOBILE MACHINERY

GENERATORS  
VARIABLE GENERATORS  
WELDING GENERATORS  
MAGNET GENERATORS  
MAGNETS  
INSTALLATION VALVES

POWER WASHERS  
STREET WASHING UNITS  
PIPE CLEANING UNITS  
DUST SUPPRESSION  
DRILLING FLUID PUMPS  
FIRE FIGHTING SYSTEM

AIR COMPRESSORS  
BIN WASHING SYSTEM  
POWER BOOSTERS  
POWER TAKE-OFF  
VIBRAS  
ETC.



# Exhibitors CECA 2020 selected

ABI Attachments	F-101923	CORMACH S.r.l.	F-3780	Link Manufacturing Ltd	F-101919
Alimak Group USA Inc.	F-2886	Cormidi USA	BL-155	Link-Belt Cranes	F-5211
All Access Equipment	F-8252	Crusher Rental & Sales Inc	C-32788	Lippmann Milwaukee Inc	S-5205
Allen Engineering Corporation	S-60938	Darda GmbH	S-63356	LiuGong Construction Machinery, N.A. LLC	F-6781
ALLU Group Inc	C-20326	DEUTZ Corporation	S-85231	Magni Telescopic Handlers SRL	F-3459
American Eagle Manufacturing	BL-249	Diamond Blade Warehouse	S-63819	Magnum Attachments Inc	C-20940
AMI Attachments Inc.	F-7732	Diamond Chain Company	N-10867	MB Crusher America Inc	C-31913
Ammann America Inc.	S-5254	Diamond Speed Products	S-62417	MB Crusher America Inc	S-5003
Anaconda USA	C-31875	Diamond Z	S-5778	McCloskey International Ltd	S-5405
ANMOPyC	GL-12287	Dieci United States, LLC	F-2879	Merlo (Applied Machinery Sales)	F-5681
Antraquip Corporation	C-20869	Dinolift OY	F-3178	Merlo (Applied Machinery Sales)	F-5785
Antraquip Corporation	C-20871	Doosan Bobcat	N-10001	Montabert/TRAMAC	N-12766
Antraquip Corporation	F-7189	Dynapac North America LLC	C-30316	MSB Corporation	F-3170
Aqua Blast Corporation	B-93818	Dynapac/Fayat	C-31113	Nakayama Iron Works, Ltd.	S-6420
Association of Equipment Manufacturers	GL-20401	Dynaset Oy	F-1548	National Association of Women in Construction	GL-10982
Astec Australia	C-30336	Dynatect Manufacturing, Inc.	B-93718	National Attachments Inc	F-3671
Astec Industries Inc	C-30336	Eagle Crusher Company Inc	C-31045	NPK Construction Equipment Inc	C-20926
Astec, Inc.	C-30336	Element Six	B-91127	Oilquick	F-2876
AUTEC North America	C-23000	Engcon North America	F-2764	Okada America, Inc.	C-30053
Avant Tecno USA	F-3768	EPIROC	C-20405	PRINOTH	C-22231
bauma 2022	GL-12596	Everdig Corporation	S-5054	PRINOTH	F-2263
bauma China	GL-12596	Fogco	B-90522	Quick Attach Attachments, LLC.	F-100619
bauma CTT RUSSIA	GL-12596	Furukawa Rock Drill USA	C-20304	Ramco Construction Tools, Inc.	S-63107
Bedrock Attachments	F-100725	GEDA USA, LLC	F-8728	REMU USA, Inc	F-1548
Bell Equipment North America, Inc	N-11601	Geith	N-12567	Rototilt Inc.	F-6482
Belt Tech Industrial	B-93613	GEM Attachments / TRM Manufacturing	F-100318	RUBBLE MASTER	S-5449
Best Hammer Industries	F-3163	Genesis Attachments	C-20926	RUBBLE MASTER	S-5643
Blasters, Inc. - Ready Jet	S-63807	Grindex Pumps LLC	C-30977	Sandvik Mining and Rock Technology	S-5249
Boart Longyear	BL-218	Hatz Diesel of North America, Inc.	S-84106	Sany Heavy Industry Co Ltd	F-7826
BOMAG/Fayat	C-30316	Haulotte Group Bil-Jax	F-6134	Sensors & Software Inc	S-65731
BossTek	B-9606	Hidromek	F-7526	Skyjack	F-6014
Breaker Technology	C-30336	Hilti Inc	S-63207	Snorkel	F-100211
Brokk Inc	F-101901	Husqvarna Construction Products North America	B-8401	Soilmec North America / Watson	F-1748
Brunner & Lay	C-31819	Inan Makina San.Ve Tic. A.S.	BL-536	STANLEY Infrastructure	N-11101
Buffalo Turbine	S-6825	INDECO North America Inc	C-20453	Steelwrist Inc.	F-2868
c/o MAEDA USA	F-7532	INTERMAT 2021	GL-10978	Superabrasive, Inc.	B-9003
Cangini Benne s.r.l.	C-20441	International Construction (ICON)	S-5998	Talbert Manufacturing Inc	F-5504
Canycor USA Inc	C-20671	IROCK Crushers LLC	C-32937	Tramac Corporation	N-12567
CASE Construction Equipment	N-11825	John Deere Construction / Hitachi Construction	N-12525	Trevi Benne SPA	F-3176
Caterpillar Inc	F-4455	Kaeson Compressors Inc	S-62429	US Hammer, Inc.	B-9109
Caterpillar Inc	N-10647	Keestrack	C-32953	Volvo Construction Equipment	F-3432
China Construction Machinery Association	GL-31901	Kinshofer North America	F-2732	VTN Europe S.p.A.	S-5372
China Construction Machinery Co., Ltd.	GL-31901	Kobelco Construction Machinery USA	F-8338	Wacker Neuson Corporation	F-2548
CM Labs Simulations	F-100911	KPI-JCI and Astec Mobile Screens	C-30336	Zoomlion Heavy Industry Science & Technology Co.	B-7001
Construction & Demolition Recycling Association	GL-12083	Liebherr	F-5258	Zoomlion Heavy Industry Science & Technology Co.	F-6270

## DUST SUPPRESSION SYSTEMS

website: [www.wlpdust.com](http://www.wlpdust.com) e-mail: [info@wlpdust.com](mailto:info@wlpdust.com)

WLP



The New  
Demolitor 70  
is Here!



# CRAZY ABOUT DEMOLITION?

GIVE YOUR CUSTOMERS  
**MORE!**

FAST GROWING COMPANY LOOKING FOR

**>>> NEW DEALERS**



**PROMOVE**  
DEMOLITION

[WWW.PROMOVEDEMOLITION.COM](http://WWW.PROMOVEDEMOLITION.COM)

+39 080 3387054

[sales@promovedemolition.com](mailto:sales@promovedemolition.com)



The Brokk 500 is much stronger than an excavator and makes the breaking of the cross passages very efficient.



## DEMOLITION WORK

# at the Mumbai Metro

***The extension of the Mumbai metro system is one of India's large infrastructural projects that have gone on for many years. PDi has had the opportunity to visit twice, with the latest visit being in November last year together with Swedish and Indian representatives from Brokk.***

India has undergone tremendous development during recent years experiencing growth rates of around 7.2%. Even though there are reports that the growth has slowed down, it is predicted that it will not drop below 6.5%. Government revenues have recently increased, which are to be invested in improved health services, education, infrastructure, transportation and so forth. In particular, there is a great deal to do in terms of the general infrastructure of the country, with roads, bridges, tunnels and railways being in need of repair and extended to link regions and cities. Furthermore, metro systems are under construction in many cities as well as extension projects to existing metros. Currently it is estimated that there is a need for some €180B to €226B of investment with about €135B already being in place.

### The Dadar Metro Station

A good example of India's strive to improve its infrastructure is the expansion of the metro in Mumbai. PDi Magazine visited the Mumbai Metro System in 2015 when parts of line 2 were built. In November last year the magazine had the opportunity, together with Brokk AB's sales director Joakim Furtenback and Sushanta Saha, country manager India, to visit a worksite located at the Dadar Metro Station on line 3. This goes from the north of the city towards the south to the Colaba peninsula.

A stretch of 32.5km is being built when PDi visited, which is divided into seven so called packages with PDi visiting package 4. Package 4 is in total 6km long and has the Dadar Metro Station located at the southern end of the stretch. The metro tube is around 8.5m in diameter

and lies about 21m underneath the surface. The tube was constructed using large Herrenknecht tunnelling machines that drill approximately 8m in diameter into the soft bedrock of Mumbai. This bedrock does however contain basalt and breccia rock. The tunnelling machine

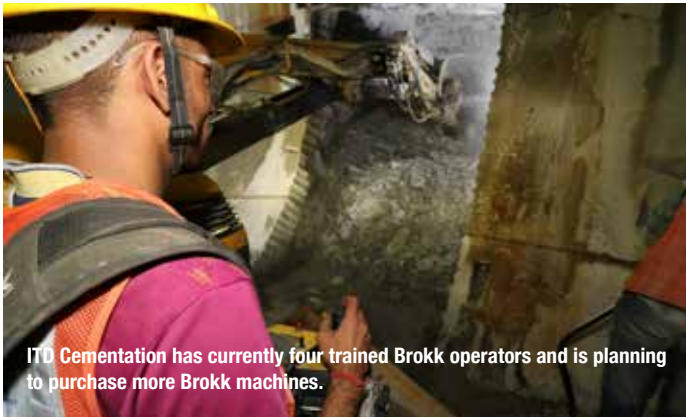


The team from ITD Cementation working on the Mumbai Metro line 3 are very satisfied with the Brokk 500's capacity.





No train yet in the tube.



ITD Cementation has currently four trained Brokk operators and is planning to purchase more Brokk machines.



Above the Dadar Metro Station goes the Gokhale Road. This is an old residential area where many of the old buildings are being renovated.

also places the concrete lining of the tube more or less in one sequence with about 1m of new subway line being produced each day.

However, these amazing tunnelling machines do not do everything. A subway line always has two tubes, one for each direction. Due to regulations, each kilometre of subway tunnel needs at least three to four evacuation tunnels between the two tubes, as in an emergency travellers need to be able to evacuate to the nearest emergency exit. Every 285m or so there is an evacuation tunnel or cross passage. On this particular stretch, which is divided into seven packages, there will be 21 cross packages with each being between 6.6m to 21m long. The cross passage is shaped in the form of a horseshoe and about 13.3m<sup>3</sup> of rock is removed for every metre made during the breaking and excavating. When the demolition of the cross passage is completed around 300mm of concrete lining is poured using the shotcrete method.

#### 'Very powerful for its size'

The contractor undertaking the tunnelling work and breaking required for the cross passages is ITD Cementation India Ltd. ITD is a Thailand based company that acquired ITD Cementation a while ago, with the client for the works being Mumbai Metro Rail Corporation.

"Our part in the line 3 project started 17 July 2016. But there have been rather many delays. We are expected to finish in December 2021. That is more or less the



The construction of the Dadar Metro Station on line 3.

complete project time for building line 3," Virender Thakur assistant general manager, who has 25 years civil engineering experience, told PDi.

In total, about 1,200 people are employed building line 3 working in two shifts, with around 430 people working on the tunnel itself. "What creates delays is the ownership procedure of the land that the tunnelling machines are drilling through. So the actual acquisition work delays our production. ITD Cementation does not only work with cross passages in Mumbai. There are also metro projects going on in Delhi, Calcutta and Bangalore," adds Virender.

When making the cross passages ITD Cementation uses two methods; either drill and blast if the circumstances allows, or an excavator equipped with a hydraulic breaker. On this particular stretch explosives cannot be used. Often the excavator is not strong or quick enough to break through the material so ITD has invested in a remote controlled demolition robot, Brokk 500. Virender states that they are very satisfied with the Brokk robot. "The Brokk is very powerful for its size and has the force like a much bigger excavator. It works perfect for the cross packages. However, we probably would need also a smaller one like the Brokk 300." In order to get the most out of its investment, IDT now has four trained Brokk operators.



# DYMACHAIN

PRECISION DIAMOND CHAIN



## We've caused a chain reaction!

Dymatec's new diamond chain range is suitable for hydraulic, prime high frequency and gas saws and combined with our new DDC650 Chainsaw the achieved results are impressive!

The Dymatec DDC650 Chainsaw delivers powerful performance with a great power to weight ratio. Available in 30lpm and 45lpm versions, this saw surpasses all other saws in its class. With a unique low vibration system and ergonomic handle design, it offers the user the ability to cut for extended periods of time without fatigue.

Just when you thought it couldn't get any better.



Free cutting in all aggregate including reinforced concrete



Longer life than main competition



Available in 14" - 16" (Gas)  
16" (High Frequency)  
15", 20", 25" (Hydraulic)



Double laser welded and unique anti stretch system

**DYMATEC**  
SPECIALIST PRODUCTS FOR DIAMOND DRILLING & SAWING

01582 599 933  
sales@dymatecuk.com  
www.dymatecuk.com

(312) 758 2186  
sales@dymatecusa.com  
www.dymatecusa.com





## DEMOLITION IN THE

# outer archipelago of Norway

***In Ålesund in Norway, a 24m tall office building was demolished to give space to Pir: Ålesund's first co-working space.***

**T**he contractor, Idungården AS, assigned AF Decom with the task of demolishing the building which also quartered stores on its bottom floor. Idungården is also the developer of the new Pir project which will involve the creation of a new innovation centre, creative meeting point as well as being Ålesund's first co-working space.

### Demolition in Ålesund city centre

"We started interior sanitation and demolishing of easier constructions in January and completed these tasks in February 2019," says Kenneth Eikrem, project manager at AF Decom. "Initially, the idea was to renovate the entire building, but the constructor chose to demolish the entire building after some time. After a long application period we got the permission to demolish at the end of June and mobilized our machines and equipment in the beginning of July. The demolishing work was completed in the middle of August."

In total, 12 people worked during the sanitation phase and five people in the machine demolition phase. They used a Volvo EC 480 with a 28m long demolition boom together with a Cat Work Tools MP 30/Mp 324 concrete pulveriser, a hydraulic breaker, demolition and sorting grapples as well as a number of buckets. Additionally, they used a Liebherr R 936 with Cat Work Tools demolition and sorting grapple with all of the demolition waste being delivered to a certified recycling plant. Heavier demolition waste, such as concrete, bricks and foundation rocks, was reused on the site. According to plan, an adjacent gas station, which shared a wall with the demolished office building, remained complete and unscathed after the successful demolition. During the project, the Ramudden Company helped out with the traffic re-routing.

"The project was carried out right in Ålesund city centre with the city's heaviest trafficked road on the

south side," says Kenneth Eikrem. "Heavier demolishing was also conducted during the liveliest time of the year, where, aside from traffic, there is also a large amount of tourists from the cruise ships by the embankment, some 300m from the worksite. The job was carried out without damage to staff or equipment and without a single complaint from neighbours or others in the city. The closest neighbouring office expressed sheer enthusiasm over the opportunity to get 'front row seats' and follow the whole process."

### AF Decom, Europe's biggest demolition contractor

AF Decom, which is a part of the Norwegian AF Gruppen, consists of a nationwide, mobile organisation focusing on safety and preservation of the outer environment. Through local front edge competence, AF Decom strives to offer solutions which meet the

customers' environmental needs and is Europe's largest contractor involved in the demolition and environment remediation of buildings and other constructions. AF Decom provides remediation, demolition, planning, environmental remediation reports, waste plans, risk analysis and waste management services. Major projects the company has been involved in include the Skjeggestad Bridge, the stranded shipwreck Murmansk and the power plant Old Bjølvo.

The city of Ålesund is a very beautiful and picturesque fishing town. It is located in the outer archipelago of the Norwegian west coast more or less on the same latitude as the Faeroe Islands. It is a very popular Norwegian tourist destination, visited by hundred thousands of tourists every year. Cruise ships also harbour in Ålesund on their way to the North Cape of Norway.

**[www.afgruppen.com](http://www.afgruppen.com)**





**THE NEW ANNA FAMILY  
HIGH PERFORMANCE CUTTING  
FOR PROFESSIONALS**

**WEKA**



TS40 ANNA  
Disc Saw

TR40 ANNA  
Ring Saw

TK40 ANNA  
Chain Saw

FU6U  
Frequency  
Converter

For more information about our products and contact details of WEKA sales distributors, please visit our website.

[www.weka-elektrowerkzeuge.de](http://www.weka-elektrowerkzeuge.de)



80th ANNIVERSARY EXPO

**感謝祭**

*-For the Next Stage*

**OKADA  
80th ANNIV. EXPO**

**MAY 27-28, 2020**

Wed. 27 10:00-17:00

Thu. 28 09:00-15:00

**SAITAMA SUPER ARENA**  
Community Arena

8-Shintoshin, Chuo-Ku, Saitama-Shi, Saitama, 330-8111, Japan





## News from Husqvarna and HTC

Husqvarna Construction Products has lined up a number of new products for introduction during the first quarter of 2020. Firstly, the manufacturer has launched a new series of PG floor grinding machines including three new sizes and eight new models. One of which is a propane driven machine designated PG 690. Additionally Husqvarna has launched a new petrol

driven floor grinder PG 400 Petrol. Husqvarna has big hopes for the latter model, particularly in the US market for grinding outdoors on roads, keys, sidewalks, etc. where electricity is hard to obtain. For this machine a matching dust extractor has been developed, namely the T 4000 Petrol, which as the name suggests, is also petrol driven. This dust extractor is also available in a

special version for the Husqvarna 'Soff Cut' line. The Husqvarna 'Hipertrowel' line for concrete floor polishing has been upgraded with new metal bond 'Hiperflez TRW LongLife' tools. These have been developed for soft and abrasive concrete and provides longer life on these types of surfaces. Furthermore, Husqvarna has launched three new ride on trowels, CRT 60 X, CRT 48, CRT 36, that were acquired from Wacker Neuson. Three new mud guards have been developed for the three trowel models which makes the wet polishing process easier.

Also the HTC brand within Husqvarna is launching its latest developments. These comprise of the HTC Duratig XP6 which was launched at World of Concrete in February and is a propane driven grinder which has been developed for the US market. HTC has also launched new tools XX3 and XX4 in the XX series. These tools are developed to grind extra hard concrete, with the series now containing three different tools, namely XX2, XX3 and XX4.

Husqvarna has also introduced the new DM 400 and DM 430 – single-phase 3.2 kW electric drill motors, combining typical Husqvarna usability features with a new level of sturdiness. They are also the first Husqvarna drill motors to be equipped with Embedded Connectivity.

[www.husqvarnacp.com](http://www.husqvarnacp.com)

## Cobra introduces screening bucket with OilQuick coupler for efficient working

Cernos Oy (Ltd) is a Finland based private company producing screening bucket hydraulic attachments under the 'Cobra' brand name for screening and crushing applications. The first such Cobra buckets have been developed and produced now over 25 years. OilQuick AB (Ltd) is a Sweden based innovator and manufacturer of quick coupling systems. The products are marketed and sold under the brand name OilQuick, which has become one of the most versatile and appreciated quick coupling systems in the world.

The Cobra screening bucket is an attachment for excavators, wheel loaders, skid steers, telehandlers and other base machines. With the Cobra screening bucket, users are able to screen, crush, separate, mix, aerate and load simultaneously in a one-step operation. This means users are able to screen and sort materials for recycling, compost and aerate green waste, recycle and handle topsoil, process dirt and demolition waste, backfill pipelines and cable trenches, prepare topsoil for landscaping, screen peat and mulch, mix or stabilize different materials. Furthermore it can crush, screen and grind raw materials in industrial applications and crush or screen frozen materials, such as sand or fertilizers.

OilQuick's quick coupler is an automatic quick change adapter to change attachments without leaving the cabin of the base machine seamlessly connecting the hydraulics and electrics. The system can be used with excavators, wheel loaders, telehandlers, lift trucks, lorry cranes and material handling machines. This means that an excavator, for instance, equipped with the OilQuick quick coupler and Cobra screening bucket can make



the excavator function as a multi tool platform for earthmoving works. This means that when beginning worksite improvements the excavator can be used to dig the material using a regular bucket or different types of buckets. Following digging, the same excavator can be used to screen the soils at the site using the Cobra

screening bucket producing a fine end material ranging from a 10mm to 75mm fragment size.

After screening is completed, the OilQuick quick coupler can be used and changed to another attachment within 10 seconds, thereby finalising the site improvement works with any other required attachment. This means that through always having the right attachment fitted and producing required materials on site, users are able to save both time and money.

Cobra screening buckets with OilQuick quick couplers will be exhibited at the OilQuick stand (Festival Grounds — F2876) at Conexpo/Conagg in Las Vegas, 10 to 14 March.

# Connect With Us Today to Find Your Scraper



SCAN ME

Subscribe to Our YouTube!

**NATIONAL  
FLOORING  
EQUIPMENT**

Made in America Since 1968

800.245.0267 | [nationalequipment.com](http://nationalequipment.com)



# TRANSFORMING THE WAY YOU WORK.



## TRANSFORMING YOUR WASTE.

Screen, crush, separate and load in one step operation all your demolition waste, such as bricks, asphalt, wood, metal and fine material. ALLU Transformer transforms your base machine into a mobile screening and crushing unit. More efficient waste material recycling - transforming your waste into valuable material. Why pay for expensive landfill payments when you can make cash from trash.

**TRANSFORMING your efficiency** – faster processes with 'one step operation'.

**TRANSFORMING your green credentials** – less material transportation at the jobsite equals less fuel consumption.

**TRANSFORMING your machines** – your excavator/ wheel loader will transform into a multifunction tool that'll screen, crush, mix and load in one step operation – with just one ALLU Transformer screener crusher.

# BEBOSA 4 AND IACDS 25



***From the 26 to 28 March this year the German town of Willingen will host the concrete cutting exhibition BeBoSa for the 4th time. Furthermore, and at the same time, IACDS will be holding its annual convention and celebrating its 25<sup>th</sup> anniversary.***

**B**eBoSa was founded by the German concrete cutting association, Fachverband Bohren und Sägen, which was founded in 2011. Today the association is a partner to the exhibition which is organised by the Dutch company, the Exhibition Company BV. The show takes place at the Sauerland Stern Hotel in Willingen, Germany, with around 50 manufacturers from all over Europe set to exhibit and around 2,000 visitors being expected from all over Germany and Europe.

On almost 1,400m<sup>2</sup> of exhibition space set in two exhibition halls, the manufacturers will be showing tools and machinery for a wide range of applications for the concrete drilling and sawing industry. In addition, there is an outdoor area of about 400m<sup>2</sup> set aside for equipment demonstrations, with the latest developments, products and services being exhibited, ranging from drilling to high frequency wall saws.

## **IACDS Annual Convention and 25th anniversary celebration**

Following the bauma trade show, the International Association of Concrete Drillers and Sawers, IACDS, decided to organise its 2020 annual convention from 25 to 26 March in Willingen. This specific location has been chosen for several reasons, with one being that Willingen hosts BeBoSa. In collaboration with the German Drilling and Sawing association, FBS, the annual meeting

is going to bring together representatives from all over the world, all eager to do business, reunite with friends and learn the latest industry news. This convention will combine professional content, an exhibition, networking opportunities and leisure activities.

In addition to the professional programme, 2020 has a special meaning for all the IACDS members: it is

its silver jubilee. IACDS was founded in 1995 and on the evening of 25 March there will be an anniversary dinner. PDi Magazine will of course be in attendance and report on the convention and the IACDS 25th birthday celebration in PDi issue 2.

**[www.BeBoSa.com](http://www.BeBoSa.com)  
[www.iacds.org](http://www.iacds.org)**

## **BEBOSA HALL PLAN**







## Scanmaskin Sweden AB launches the latest 'World Series' dust collector

Scanmaskin launched the ScanDust 9000 World Series in an electric and a propane version at World of Concrete. As with all machines in the World Series range, extra effort has been put into efficiency, design, ergonomics and ease of service.

The ScanDust 9000 World Series is the largest and most efficient industrial dust extractor produced by Scanmaskin, featuring increased filter capacity and built in pre-separators. The unique and patented pre-separator separates the dust into two stages and provides up to 90% pre-separation. This results in no need to clean the filters as often, which provides a longer filter life and less maintenance when compared to traditional industrial dust collectors. "We have listened to our customers, their challenges and wishes, and created an industrial vacuum cleaner that provides a significantly longer operating time and a safer working environment." Says Anna-Lena Lööf, marketing director, Scanmaskin Sweden AB.

The electric version of the ScanDust 9000 World Series is equipped with a frequency control drive which allows the adjustment of power and speed depending on the application. The combination of this, together with high filter capacity and high airflow, allows connecting more machines to the same vacuum cleaner. It also has a height adjustable cyclone for flexible transportation and is also equipped with solid rear wheels and 200mm large swivel wheels for easy handling in the workplace. The World Series design makes service simple, as parts can easily be accessed with no need for disassembly in order to gain access.



## E1 technology from Hatz pioneers engine industry

At the beginning of January, Hatz's latest generation of engines with E1 technology received their first emission certificates. This is the first time that a single cylinder industrial diesel engine with electronic injection and control has been certified according to the currently valid US standard EPA Tier 4 final. The Hatz 1D90E engine is the peak performer of the range, and is said to be the most powerful single cylinder diesel in the world. The E1 technology paves the way for

a networked future, for example, for use with hand guided machines, mobile light masts or power generators. It also provides availability of data on all engine performance characteristics, localisation, evaluation of equipment utilisation or the ability to perform remote diagnostics and maintenance. The E1 technology was recognised in the USA in 2019 with the Diesel Progress Award, with the jury being impressed with the ground breaking technology used.

## Which excavator is right for me?

Volvo Construction Equipment now offers two crawler excavator models in the 20t-25t class, namely the EC200E and the EC220E. Making the right choice between them will ensure minimum total cost of ownership and maximum profitability. "Anyone in the market for a 20t-25t crawler excavator should think carefully about how the machine will actually be used and discuss this with their local dealer," advises Jörg Breuer, product manager for crawler excavators at Volvo CE. "In some cases, the EC220E may be over specified for the task in hand, in which case a customer would be



paying for more than they actually need. It all depends on the specific tasks and number of operating hours the machine has to complete on the jobsite. It's all about matching the specifications of the machine perfectly to the demands of the application," Breuer explained.

## TYROLIT HRE410 RING SAW

Tyrolit has announced the release of the new HRE410, a new, electric ring saw with intelligent ergonomics that enables work without overcuts.

Tyrolit has focused on modularisation with its latest development being the HRE410 electric ring saw for wall and floor cuts, which can be used with the control unit of the WSE1621 wall saw, adding another field of application to the system. This addition provides maximum utility and universality for its users. The innovative HRE410 was developed to avoid overcuts, which is a common problem associated with wall sawing. When cutting depths of up to 300mm, this new ring saw provides an alternative to corner drilling or diamond chain saws. The combination of the powerful 6.5kW P2 high frequency motor and Tyrolit ring saw blades ensures fast and precise cutting performance. In addition, the HRE410 boasts intelligent ergonomics



with both handles easily adjusted, whereas the rear handle can be rotated by 90° for an ideal cutting position without fatigue.



VISIT US AT  
**SaMoTer**

31<sup>st</sup> INTERNATIONAL CONSTRUCTION EQUIPMENT TRADE FAIR  
VERONA, ITALY | 21.25 MARCH 2020 | [SAMOTER.COM](http://SAMOTER.COM)

PROUD TO PERFORM

# PC390HRD-11

## HIGH-REACH DEMOLITION

**ENGINE POWER** 202 kW / 271 HP **OPERATING WEIGHT** 45,7 - 61,8 ton **ATTACHMENT WEIGHT** max. 4 ton

From bare steel, Komatsu's demolition excavators are designed and manufactured as fully-specified demolition machines, and all key components thoroughly tested so you can work safely and efficiently. Demolition is a business for experts.

# KOMATSU

[WWW.KOMATSU.EU](http://WWW.KOMATSU.EU)



## UK's first Bobcat 'Waste Expert' telescopic loader operating in Sheffield

The UK's first Bobcat 'Waste Expert' telescopic loader has been purchased by H.R. Skip Hire based in Sheffield. The new TL38.70HF Waste Expert model was supplied by AMS Bobcat Limited, the authorised Bobcat dealer for Lincolnshire and East and South Yorkshire.

Together with the TL35.70, TL34.65HF and TL43.80HF models, the TL38.70HF is one of four of Bobcat's current productivity and high flow telescopic loaders that are offered as 'Waste Expert' machines. Powered by Bobcat Stage IV 100 or 130HP engines, these new models offer lifting capacities from 3.4t to 4.3t and lifting heights from 6.5m to 8m. They are also very robust, with heavy duty Dana Spicer axles and additional reinforced protection. They also incorporate an extra-large boom head, a high tensile steel boom, boom cushioning and protected hydraulic rams under and inside the boom.

Like all Bobcat telescopic loaders, the Waste Expert machines have a box welded frame to meet heavy duty cycles and offer a high ground clearance with a bottom plate along the entire length to protect vital parts. Barry Howe from H.R. Skip Hire stated: "We were particularly impressed with the visibility, compactness, boom speed, protection and ease of use of the TL38.70 Waste Expert machine. To back this up, Chris Scott, sales manager at



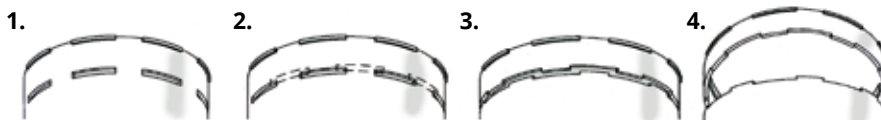
AMS Bobcat, provided us with a fantastic package with extended warranty and a very attractive finance programme."

H.R. Skip Hire is a family run business local to the Sheffield area with over 25 years' industry experience in the waste and recycling industry, including hiring out an extensive range of top quality 4t, 6t and 8t skips and a range of grab wagons. Customers can rely on a dependable and punctual service from the company for long and short term hire, six days a week. The company also runs its own Environment Agency registered waste transfer station, where the company disposes of all processed waste, including soil, concrete and metal, in

an environmentally friendly and very efficient manner. H.R. Skip Hire uses the latest techniques to dispose of processed waste, sorting and screening waste through its material recovery facility, enabling the company to recycle 90% of all the waste it handles. The materials recycled include bricks, soil, concrete, metal, plasterboard, plastic, cardboard, green waste, glass and timber.

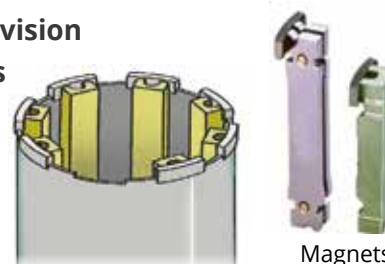
Established in 1992, AMS Bobcat is one of the longest standing Bobcat dealers in Europe with well over 25 years in partnership with Bobcat in the UK. Over the intervening years, AMS has sold well in excess of 3,500 new Bobcat units into a wide range of industries, including construction, agriculture, shipping, plant hire, mining, landscaping and demolition. AMS has also built up a rental fleet of over 100 Bobcat machines, comprising compact loaders, compact excavators and telehandlers, complemented by a fleet of Bobcat attachments.

## Equipment for the retipping of diamond core bits



Cuts notches for the segments at the same time as it cuts off the worn part.  
Gives support on three sides. Easier to braze. Safer to drill.

- Neat and accurate segment division
- Manual and automatic models
- No noise or dirt
- Silver rods and flux
- 25 years in the business
- More than 1000 units sold



**Diatip**<sup>TM</sup>

Midhage Diatip AB  
www.diatip.com

SE-269 31 Båstad  
Sweden

Tel. +46-431-75 650  
Email: diatip@midhage.se





**THE STRONGEST. THE BEST.**

**DM8P Wet Drilling Motor**

Power Input: 2500W

Capacity: 202 mm

**C18 Concrete Saw**

Power Input: 6500 W

Cutting Depth: 175 mm

Blade Ø : 457 mm

**Brushless**

**AGP®**



## Selected list of exhibitors at SaMoTer 2020

Bobcat Emea	Mb Crusher
Brokk Italia Srl	Mccloskey International
Cams Srl	Montabert
Cangini Benne Srl	Multione Srl
Corazza S.R.L.	Osa Demolition Equipment Srl
Corimag S.R.L.	Terex Finlay
Doosan Infracore Europe	Saint-Gobain Abrasivi S.P.A.
Dynaset Oy	Samep Tools Sas
Emicontrols	Sampierana Eurocomach
Entrack Europe Srl	Sea Technology Srl
Epiroc Italia Srl	Sima Snc
Euromach S.R.L.	Simex S.R.L.
Hinowa S.P.A.	Socomec S.P.A.
Husqvarna Italia Spa	Trevi Benne Spa
Hyundai Construction Equipment Europe	Volvo Group Italia Spa
Idromeccanica Ramtec Srl	Vtn Europe Spa
Indeco Ind S.P.A.	Wacker Neuson Se
Komatsu Rete Italia	Yanmar Construction
Liebherr -Emtec Italia Spa	Equipment Europe
Magni Telescopic Handlers	Zanetti Magneti Srl

**SAMOTER TO BE HELD AS ITALIAN CONSTRUCTION INDUSTRY ON THE UP**

# reflected by Innovation awards

***The Italian construction machinery exhibition SaMoTer will take place at the Verona Exhibition Centre from 21 to 25 March, 2020. Timing could not be better, as things are looking up for the Italian construction industry which is finally picking up after some difficult years.***

**C**onstruction machinery exports grew by 1.9% to €2.24B in the first nine months of 2019 according to an international trade report that comprised of an analysis of Istat data by the SaMoTer-Prometeia Outlook that monitors Italy's import/export flows in the construction equipment sector. The survey indicates that exports in the period January-September 2019 saw the industry grow from €2.19B when compared to the same period in 2018. This increase was particularly attributed to an increase in the export of concrete machinery, which posted an increase of +15.8% (€246.63M) and aggregate preparation machinery, with exports of €422.66M (+9.9%).

Research predicts that in 2020/2021 these figures will increase, albeit at a slower pace than in 2019. Overall investment in Italy in 2018 was €139B and current forecasts for 2019 suggest a further increase of 3.3%, worth around about €4.5B. These figures are also likely to improve over the next two years, with expected growth of €2.5B in 2020 (+1.8%) and €2.4B in 2021 (+1.7%). These updated estimates by the SaMoTer-Prometeia

Outlook were published in Building & Construction sector Monitor for December 2019.

### SaMoTer Innovation Awards

Further reflecting the growth in the Italian construction industry, in January this year a number of exhibitors at the coming SaMoTer show attended the pre-SaMoTer press meeting. At a gala dinner, the winners of the 23rd SaMoTer Innovation Awards were announced. The winners included Simex which won in the attachments category with its TFC400; Wacker Neuson in the mini excavator category with EZ17e; Kobelco for its SK75SR-7 midi excavators and Hidromek for its HMK230LC-H4 construction excavators. Other winners included Bobcat, Hyundai and Liebherr. Trevi Benne received special recognition for its outstanding performance in developing hydraulic attachments for demolition and recycling, in particular the new back-dump excavator bucket.

This all means that expectations are high for the upcoming event in Verona and PDi Magazine will be there to report about the show. Attached you will find

a selected list of exhibitors at SaMoTer related to the industries PDi covers.

**[www.SaMoTer.it](http://www.SaMoTer.it)**



Meet us at



Las Vegas (US)  
Silver Lots 1&2  
Booth S5555

**SaMoTer**

Verona (IT)  
Hall 10  
Stand M3

# HEAVY MADE EASY

## TFC - Drum Cutter Heads for continuous cutting

HYDRAULIC ATTACHMENTS FOR EARTHMOVING MACHINES  
SELF-LEVELLING PLANERS • CUTTER HEADS  
SCREENING BUCKETS • CRUSHING BUCKETS • WHEEL SAWS

AND OVER 80 INNOVATIVE ATTACHMENTS TO FIND SOLUTIONS  
TO THE MOST CHALLENGING APPLICATIONS.  
FIND OUT MORE: [simex.it](http://simex.it)

# SIMEX

Soc. Uninom. Via Isaac Newton, 29-31-33 - 40017 San Giovanni in Persiceto (Bo) - IT  
Tel. +39 (0)51 681 0609 - [sales@simex.it](mailto:sales@simex.it) - [simex.it](http://simex.it)





## Fast and precise concrete cutting for Sasaram's new footbridge in India

Indian Railways commissioned the Dedicated Freight Corridor Corporation of India Limited (DFCCIL) to lay new tracks exclusively for cargo trains on one of the most fast-paced projects in India. The overall goal of the project is to connect four regions and to reduce the transit times and the costs of transporting cargo.

DSC – R. K and Company was commissioned with the concrete cutting tasks on the project. This involved the dismantling of an old footbridge, which was impeding the construction of the DFCCIL track. Indian Railways decided to remove the old overpass and replace it with a new footbridge. For this challenging job, DSC – R. K and Company used concrete cutting equipment from Tyrolit, including the wire saw SK-SD, the power packs PPH25 and PPH25RR, as well as the FSE811 floor saw.

The FSE811 floor saw was especially designed for locations that are difficult to access, and allows a quick and easy change from left to right cutting. In addition, this saw features a smooth cutting depth adjustment, using a precise and protected spindle. The SK-SD wire saw comes with a gross wire length of 10.8m and intelligent wire storage. The saw is designed for faster, safer and simpler working thanks to the direct mounting of the wire saw on the cutting surface and can be converted into a drill rig in next to no time.

The 2-stage control of the PPH25 ensures optimum cutting speeds for all applications and is a simple, yet



**The cutting of the footbridge brought some challenges DSC – R. K and Company overcame in a professional manner.**

reliable drive with product features reduced to the essentials. The 4-stage control of the Premium PPH25RR drive ensures optimal cutting speeds for all applications and the potentiometer of the remote control ensures a wire conserving soft start.

The cutting was significantly demanding, as the line is one of the busiest railway tracks in the region, with a minimum of 300 trains passing through each day. As a result, DSC – R. K and Company could only work two to three hours per day. They also had to guarantee that no water would leak below the bridge, as there were

live high-tension electric wires located under it carrying currents of 33,000kV. The Tyrolit floor saw FSE811 cut the horizontal slabs of the bridge, whilst the 94t piers were cut using the Tyrolit SK-SD wire saw with great precision, which was essential due to their proximity to the live wire.

The entire cutting operation was actively supported by Würth India, the official Tyrolit distributor for India, and was completed within seven days. DSC – R. K and Company were, thus, able to finish the job for Indian Railways just in time.



## Russian aluminium producer relies on mobile Sennebogen material handlers

Russian aluminium manufacturer JSC Aluminium Alloys specialises in producing aluminium alloys in Podolsk near Moscow. Now three Sennebogen D-series machines support all transport and logistics processes

there, specially built for the Russian market and its heavy requirements.

The JSC Aluminium Alloys plant is located in Podolsk near Moscow and is home to one of Russia's



leading aluminium producers. About a third to a half of the company's production is exported to Asian countries, America and Mexico. The raw material is used to produce profiles for aluminium frameworks, special tools and even engines. The company has continuously updated its production technologies and equipment installing a new rotary kiln system, for slag processing, as well as new transport and logistics machinery. The company also now operates three Sennebogen 825 D-Series material handlers, with the third going into operation in spring 2019.

Andrei Frolushkin, head of transport, said: "One of the most important factors in the choice of Sennebogen machines was the absence of electronics, which simply could not withstand the working conditions in the factory. Sennebogen is one of the few companies that still offer electronically reduced material handlers." Another factor that influenced the choice of machine is the plant's infrastructure. The plant was built during the Soviet era meaning that all passages are low with masts and pipes, but the small and manoeuvrable Sennebogen 825 has proved to be ideal solution.



BORN TO

# SAVE MONEY AND TIME



1

4

2

3

## 1 DRUM CUTTER

Work any type of road surfaces with accuracy and without unnecessary vibrations.

## 2 SORTING GRAPPLE

Move and position construction material with total precision and safety.

## 3 SHAFTS SCREENER

Reuse extracted material directly on-site.

## 4 CRUSHER BUCKET

Transforms waste material into reusable material for backfill.



MB WORLD  
TOUR 2020



10-14 MAR '20

LIVE DEMO #S5003

INFORMATION #C-31913

21-25 MAR '20

**SaMoTer**

HALL 10 #D2

AREA DEMO #2E



▶ SCAN & PLAY

info@mbcrusher.com

**MBCRUSHER.COM**





## WINDS OF WOW IN VEGAS

***It was a breezy week in Vegas, as World of Concrete warmed up contractors for a busy 2020 construction year. Jim Parsons reports.***

**T**he 2020 World of Concrete more than held its own in its triennial role as an industry 'warm-up' act for Conexpo/Conagg. Indeed, were it not for the calendar, one might imagine that it was largely business as usual at the Las Vegas Convention Center's mid-winter assemblage of all things concrete and masonry.

According to the organisers, this year's show attracted approximately 54,000 registered visitors - up 4,000 from the last Conexpo year in 2017 - and more than 1,300 exhibitors, 19% of which were first-timers. There may have been a little more elbow room than usual to navigate the exhibit halls and the blustery, yet always buzzing outdoor demonstration area, but World of Concrete 2020 was anything but scaled down. It boasted numerous product debuts from manufacturers eager to present their latest innovations to an audience that was as hard-core concrete focused as they come.

Some of the first announcements came from Husqvarna, which began its vow to introduce 35 new products by June, with a new eight size line of electric and propane powered planetary grinders. These range from the 2.2kW PG 540 to the top of the line 15kW PG 830, which is also available in remote control and single drive versions. Husqvarna also featured the PG 400 gas powered 400mm single disc floor grinder, designed to be matched with the equally new T 4000 gas powered dust extractor. For drillers, there were the DM 400 and DM 430 single phase 2.3kW electric drive motors, designed for core bit diameters of between 55mm to 300mm and 100mm to 450 mm respectively. The trend toward bigger floor polishing systems was evidenced by

Husqvarna's 'Hipertrowel', a ride on machine designed for new and existing floors larger 464m<sup>2</sup>.

Located nearby, Superabrasive has added a similar trowel to grinder/polisher as part of its Lavina product line, equipped with the propane powered 630 kg LP36 and four blade 185rpm rotors. At the other end of the Lavina grinding spectrum was the new 356mm electric L14E grinder, with speed settings of 400 to 1,000rpm.

### Power and productivity on the move

While the surface preparation market appears to be gravitating toward size extremes, 'cordless' seems to underscore most new offerings from tool manufacturers. DeWalt debuted its DCH614 60V Max 44.4mm SDS



rotary hammer, which the company says provides 10.5J and 380rpm for all types of concrete. The DCH614 also boasts a constant speed control feature that maintains rpm speed regardless of bit size or depth, and wireless communication with specially equipped DeWalt dust extractors such as the DCV 60V.

Hilti likewise expanded its cordless line-up with the TE500 A36, a 5.6kg, 36V version of its corded counterpart that the company says delivers 24.8N and 3,300imp/min. The tool is also ideal for chiselling applications, covering 1,000cm<sup>3</sup> per minute and can be used with the BC 75 cordless vacuum, which is light enough to be worn backpack style for greater mobility.

Many other cordless tools were on display, including Bosch's 18V CBH 36 C and 45 C, both of which are powered by the company's new 8A/hour battery with a 45min recharge time. Makita is adding to its already expansive product inventory with the 18V X2 brushless 228.6mm power cutter, and 18V LXT brushless power scraper, both of which will be available this spring.

Of course drilling requires some tough bits, with Diablo bringing its new Demon SDS-Plus and SDS-Max 4-cutter full carbide head hammer bits for concrete with rebar applications. Nearly 80 different bits make up the Demon line, with sizes for SDS-Plus bits ranging from .787mm to 28.575mm, while the SDS-Max ranges from 9.5mm to 50.8 mm.

Battery innovations weren't limited to tools. Vacuworx demonstrated its new battery powered PHD portable vacuum lifting system that weighs just 11kg, yet can lift up to 1,134kg. True to its name, the PHD is equipped with smart features like a remote control, 12V 30A/hour lithium battery and dual pump design to build vacuum power faster.

World of Concrete visitors also got to see other product 'roll-outs' with Bobcat releasing its R2 series E42 and E50 compact excavators. These have such features as integrated lift eye, more accessible auxiliary hydraulics connections and an optional clamp diverter valve for enhanced hydraulic clamp functionality and





Challenges vary.  
Quality stays.

 **Made in Germany**



Dust Collector DC 5020

Streamer S750E

[www.impactsgroup.com](http://www.impactsgroup.com)



# W-technology

## A REVOLUTION TO METAL DIAMOND GRINDING TOOLS

- \* GRINDING FASTER: 30% FASTER THAN TRADITIONAL METAL TECH;
- \* ANTI-BURNING: 2 HOURS CONTINUOUS GRINDING WITHOUT BURNING;
- \* HIGH CONSISTENCY: QUALITY CONSISTENCY GUARANTEED;
- \* COST-EFFECTIVE: SAVE TIME, LABOR, AND MONEY.



[www.ashinediamondtools.com](http://www.ashinediamondtools.com)  
[www.linkedin.com/in/ashinediamondtools](https://www.linkedin.com/in/ashinediamondtools)

## SOLUTIONS FOR LEADERS

MADE IN GERMANY

**BAIER**  
*Elektro-  
werkzeuge*

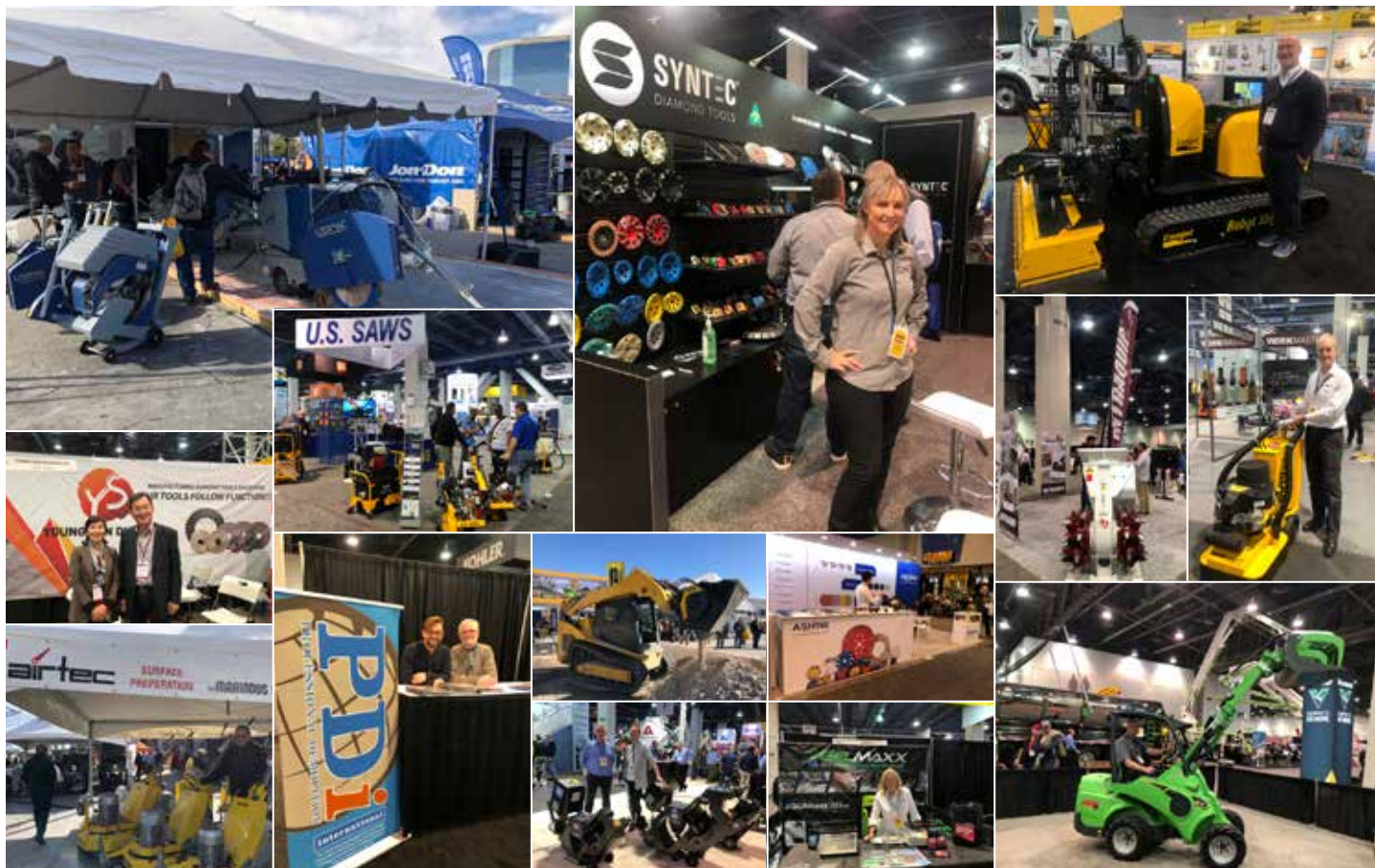


**NEW IN THE MARKET!**  
2-gear dry coring in concrete  
with rebar up to 10"

**ULTIMATE COMPETITOR!**  
Dry coring in reinforced concrete,  
up to 6" diameter.

Maschinenfabrik OTTO BAIER GmbH - Heckenwiesen 26 - 71679 Asperg - Germany  
Tel. +49-7141-30 32-0 - [info@baier-tools.com](mailto:info@baier-tools.com)

[www.baier-tools.com](http://www.baier-tools.com)



attachment operation. Bobcat's R series also includes the T76 compact track loader and the S76 skid steer loader featuring longer and stronger lifting arms for greater capacity, plus a one piece cab for better noise suppression.

Across the aisle, Doosan displayed its DX62R 6t reduced tail swing mini excavator that the company says fills a niche in its RTS offerings. The DX62R also provides 101mm of additional digging depth, and factory installed quick coupler lines.

The biggest big equipment debut may well have come from Case, which announced a complete re-launch of 13 compact track loaders and skid steers as its B Series. All feature updated electrical and hydraulic systems, new operation and environmental controls and updated Tier 4 technology to eliminate the need for diesel particulate filters. The five compact track loaders range in size from 1,225 to 2,041kg, and 55 to 67kW, with the eight skid steer models ranging from 725.7 to 1,542kg and 45 to 67kW.

### 'Meets and greets'

Some of World of Concrete's newest faces were on hand to introduce themselves, even if their products are well established. At the booth of hydrodemolition manufacturer Conjet, representatives of the firm's new leadership team welcomed both customers and the curious. "Hydrodemolition is a superior way to deal with concrete removal," asserted Peter Ankerst, a member of Conjet's ownership group. He added that the company plans to, "Put energy into developing a new generation of machines." Conjet's new CEO Robert Kreicberg, a former HTC executive, recognises that building awareness is the new leadership team's top challenge. "We

know we have some work to do, but we feel this is a good market for us."

This will mean competition with Brokk owned Aquajet, which is working on allaying concerns about hydrodemolition's water resource issues with its 'EcoClear' filtration system. This is designed to treat wastewater generated by its high pressure robotic machines for reuse, storage or release back into the environment.

Brokk also launched a new attachment, the BCP planer for removing material from walls, floors, and ceilings as well as for cleaning, renovation and restoration applications. The three models in the BCP series are specially designed to work with Brokk's remote control demolition robots, providing what is said to be up to seven times the speed of handheld options with greater precision and safety.

Elsewhere on the show floor, Australian owned Makinex continued its rollout of mobile generators with a new 23kW 480V unit that provides concurrent e-phase and single phase operation. Weighing 190.5kg, the constant duty generator can operate for approximately 10h on 45.4l of fuel. Makinex's line of portable battery powered generators, introduced at last year's World of Concrete, is currently undergoing redesign.

Diamond Vantage displayed its new TS400 tile saw, with 1.5kW motor for cutting through larger materials up to 57mm thick. At 29.5kg, the saw is highly mobile, and includes features to help reduce vibrations.

Metabo, introduced its VB16Y battery powered rebar bender/cutter, which can cut or bend #3, #4, and #5 to pre-set or adjustable angles. Depending on rebar thickness, the company says the 18kg machine's blades can make up to 5,000 cuts. Metabo has also

adapted its MFE 40 wall chaser tool from Europe for US applications.

Stihl's battery powered GTA 26 garden pruner may not be suitable for rebar, but the 1.4kg mini chain saw with its 101mm guide bar is ideal for trimming brush away from a job site. Stihl is also the latest equipment manufacturer to introduce an asset management system. Designed to function with any tool that generates magnetic flux, regardless of manufacturer, the Bluetooth enabled system currently provides operational data to plan maintenance schedules and make more efficient use of tools. This will be expanded to include anti-theft and other capabilities.

Nor forgetting that everyone needs a good knife, OLFA presented its new MXP-L and MXP-AL die cast aluminium utility knives. The MXP-L features OLFA's classic ratchet locking mechanism, with an oversized design for greater control, while the MXP-AL's oversized auto locking mechanism slides to the selected length and stays put. Both knives are fitted with an anti-slip grip that wraps around the back of the tool and a tethering hole at the tool end for easy securing.

World of Concrete also offered some clues about what contractors can expect in the coming months. Most observers are looking for a good first half, with subsequent months hazy given uncertainties such as the U.S. elections, trade disputes, and lingering effects of the coronavirus outbreak. There is however no shortage of optimism from the World of Concrete's organizers. Nearly 500 companies have already booked space for the 2021 edition, reserving a total of 49,238m<sup>3</sup> - nearly 77% of the WOC 2020 show floor. Conexpo/Conagg 2020 may well have a tough act to follow...and precede.





## Epiroc HB 4100 hydraulic breakers

On the Spanish island of Gran Canaria, work is being carried out on a new section of the GC-2 motorway in the northwest of the island. The new section, from El Risco to Agaete, requires the construction of 8km of safe fast road on complicated terrain. For the difficult excavation work required, the subcontractor, Perforaciones Trujillo, is using Epiroc HB 4100 hydraulic hammers mounted on crawler excavators.

The new stretch of motorway, will include eight tunnels, two viaducts and three junctions. The project provides contractors with a challenging environment as it is located on mountainous terrain comprised of hard rock. For local residents, the new motorway is seen as a very welcome development, with the existing route experiencing constant landslides that often left the village of La Aldea cut off from the rest of the island.

Much of the work on the project has been entrusted to Perforaciones Trujillo S.L. which is located in Las Palmas de Gran Canaria. The company has a long history in the locale, with experience spanning many years having earned it recognition as a contractor with the ability to perform any type of work in the area. A key tool used by the company has been Epiroc breakers. "Both the IPS system and the rest of the functions make the Epiroc HB 4100 the best option in relation to the total cost of ownership of the equipment," says director of Perforaciones Trujillo, Juan Monagas.

The Epiroc HB range of hydraulic breakers used on the project comprises of nine models that are suitable for carrier machines from 22t to 140t. The above mentioned IPS system automatically adapts the behaviour of the hammer to any working condition enabling the hammer to be positioned more quickly and accurately thanks to the centring effect, as well as preventing the occurrence of blank firing that can cause damage to the tool. The uptime of the equipment increases due to the fact that the IPS system does not require any type of intervention on behalf of an operator, meaning that there is no interruption of the work process.



## €275M Lahti ring road landscape transformed **WITH HELP FROM ALLU**

A series of 167 improvements are currently underway around the southern ring road of the Finnish city of Lahti. One of the main contractors for the project, Skanska, has added a new tool to its armoury in making the work as efficient, cost effective and environmentally friendly as possible. Allu DN Series Transformers have been successfully put to work screening excavated materials for reuse thereby boosting the environmental credentials and efficiency of the project.

The southern ring road around the Finnish city of Lahti (Finnish national road 12) will, when complete, boost to the area's economy. At the same time, the ring road project is seen as of great strategic importance to the entire traffic system of Finland as it substantially improves cross country connections and links to St. Petersburg in Russia that are vital to Finnish industry.

The Lahti Southern Ring Road project involves rerouting the main road No 12 to the south of Lahti and improving the regional road No 167 which enters Lahti from the south. The development and infrastructure project consists of two works sites and three separate contracts. Subproject 1A involves widening the Lahti Southern Ring Road at the Hollola end to provide two lanes along main road No 12 between Soramäki and Okeroinen, as well as building 17 bridges. Subproject 1B covers the southern end of the Lahti Southern Ring Road, with work starting to the east of the Okeroinen interchange and ends at the Joutjärvi interchange. This is a technically challenging stretch of the road, and the project involves, among other works, building several interchanges as well as two tunnels.

Subproject 2 involves widening Uudenmaankatu to provide four lanes along regional road No 167, which enters Lahti from the south, between Renkomäki and Laune. The project also involves renovating underpasses and bridges. Works along regional road No 167 began in

the spring of 2017 and works along main road No 12 in the spring of 2018. The goal is to reopen main road No 12 to traffic towards the end of 2020, with work finishing in 2021, and final surfacing is scheduled for 2023.

### Ground works and landscaping

Given that the project has impressive environmental credentials, the way excavated materials are treated has been an important concern on all the subprojects. One of the main contractors, Skanska Infra Oy, which is responsible for landscaping and constructing road slopes, embankments and noise barriers, has been using Allu DN Series Transformers for landscape purposes.

To this end the Allu DN 3-17 X75 has proved to be invaluable providing high levels of working versatility and flexibility even in the most challenging environments. It comprises of an attachment which screens, crushes, aerates, blends, mixes, separates, feeds and loads materials. This results in the feed material being effectively transformed into highly valuable products, making operations on the project more efficient, and more profitable.

The use of the Allu Transformer has been pivotal on the ground works and landscaping operation on the Southern Ring Road project. Following excavation, the material is collected and its usability is analysed, then screened and mixed using the Transformer to provide a smooth soil mixture. After that, the ready to use soil is spread where it is required, ready for any planting. In the latter case, the construction of sight and noise barriers, as well as reaffirming the environmental credentials of the project, sees reforestation as a key part of the project. This all means that the use of the Allu Transformers sees material being reused from excavation operations, with no requirement to buy or transport extra material from outside the project, which is inefficient, both economically and environmentally.

**GET THE  
RED  
CRUSH!**



VISIT US AT  
BOOTH C3005

## **EVB-SERIES**

# **THE PERFECT ATTACHMENT FOR CLEANING CONSTRUCTION AND DEMOLITION SITES**

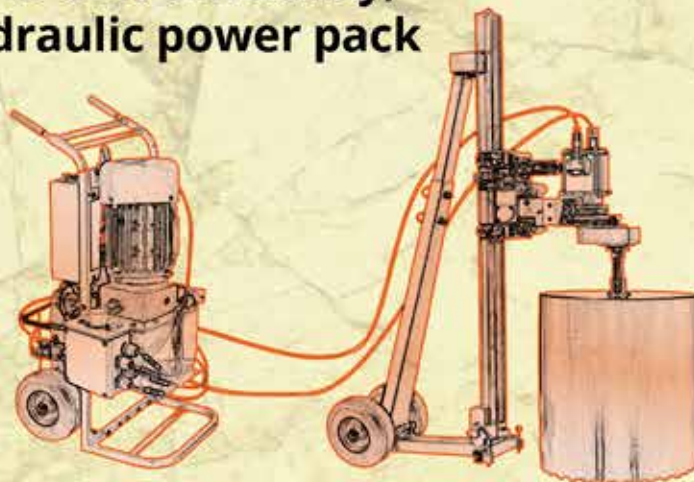
- ✓ **Power**  
The EVB is perfect for segregating debris and soil
- ✓ **Convenience**  
Processing a huge volume of materials just by connecting two hydraulic hoses to the excavator
- ✓ **Material**  
The hydraulic system is protected against peak pressures and excessive oil flows
- ✓ **Modern**  
Fitted with a excentric driveline



**Curious about our full range?** Discover our products on [www.rotar.com](http://www.rotar.com)



**Hydraulic systems: 40-60% efficiency,  
150-300 kilos with hydraulic power pack**



**High frequency systems:  
60-80% efficiency, 30-60 kilos with inverter**



**CUTTRONIX CM-10 ISRCdrive™ core drill motors:  
>90% efficiency, 22 kg motor weight**



**10 kW output power  
Power pack inside  
1-phase and 3-phase power  
Wide RPM range  
Drills much faster**







## TRS MOBILE METAL SEPARATION FOR RECYCLERS

Recyclers are increasingly using mobile metal separation systems for separating ferrous and non-ferrous metals on site.

As a result of more stringent recycling legislation and measures such as banning the export of waste to China, or restrictions on the application of certain recycling streams, companies are constantly upgrading their recycling methods. "That means that sometimes you need to go to places that are hard to reach. And you have to recover the added value locally, in this particular case the non-ferrous metals," said Jörgen Sassen, general manager of Steelage Czech Republic, an important service provider to the steel industry.

TRS BV Metal Recovery Solutions specialises in equipment to handle these needs. This year, for example, Steelage Czech Republic purchased a Caterpillar mobile eddy current separator with integrated custom made magnetic separator developed and delivered in consultation with TRS BV. With this mobile metal separator, Steelage is now extracting additional ferrous and non-ferrous metals from materials which otherwise never would be processed. These

flows are released from various recycling processes and are temporarily stored on site and then further processed locally.

### Mobile machines

In general, there are many types of mobile separation machines, such as mobile conveyor belts, crushers, shredders, sieves, hand sorting booths, wind shifters and now various mobile eddy current separators that take care of the total process. To benefit from such equipment, TRS developed a robust, user friendly machine, suitable for more difficult recycling streams such as incinerator bottom ash. The machine ensures that the incoming recycling flow is first distributed as optimally as possible. The ferrous metal is then separated by a magnetic roller and discharged via a conveyor belt. The material flow is then prepared for separating non-ferrous metals, which fall directly from the metal discharge side into a container for further processing. The remaining recycling flow is neatly deposited in a pile through a discharge conveyor belt.



## Hillhead announces further expansion

Demand for the 2020 edition of Hillhead has been overwhelming with outdoor space selling out before the end of last year and the Main Pavilion now also full. Event manager Harvey Sugden explains: "With the event still more than five months away, the decision has been made to extend the Registration Pavilion, increasing its capacity to 120 exhibitors. This 3,000m<sup>2</sup> area will provide a vibrant and engaging gateway to the show."

[www.hillhead.com](http://www.hillhead.com)



## ‘PAVESCAN RDM 2.0’

GSSI, the leading manufacturer of ground penetrating radar (GPR) equipment, has announced the release of PaveScan RDM 2.0 - an innovative asphalt density assessment tool that provides accurate real time measurements to ensure pavement life and quality.

GSSI unveiled PaveScan RDM 2.0 for the U.S. and Canada at the Transportation Research Board 2020 Conference in January. PaveScan 2.0 incorporates a new sensor design built specifically for the extremes of the asphalt paving environment, foldable deployment arms with high visibility for work site safety and has a warm up time of under one minute when the ambient temperature is over 21°.

PaveScan RDM is ideal for uncovering problems that occur during the paving process, including poor uniformity and significant variations in density. By avoiding these problems, PaveScan RDM helps avoid such premature failures as road ravelling, cracking, and

deterioration along joints. The system automatically measures the dielectric value to identify anomalies in real time. In addition, the dielectric values can be used to as a means to correlate percent voids and density in new pavement. The innovative technology enables users to obtain critical density data for QA/QC of new pavements. Unlike other options, such as nuclear density gauges or radioactive alternatives, PaveScan does not result in any site hazards or require closing off of work areas.

Seamlessly integrating with GPS systems, PaveScan features a flexible, modular design that facilitates easy and efficient operation and data collection. It is offered as a single sensor or a three sensor cart based configuration. As of April 2019, this pavement density measurement technology is an accepted American Association of State and Highway Transportation Officials (AASHTO) specification, PP 98-19.





## Kemroc launches drum cutter attachments

Kemroc started 2020 by announcing a major expansion to its product range with a complete range of twin head rotary drum cutters. The new models will be available from March 2020 with additional models expected to follow later in the year.

In addition to the standard EK and convertible EKT range of drum cutters with chains, Kemroc has completed its product offering with rotary drum cutters that have no central cutting chain. With strong, torsion and wear resistant housings and very rugged gear drives, these are designed to work in demanding conditions. The KR range of rotary drum cutters are designed for use on excavators from 1t to 125t with a very robust design making them the ideal attachment for use on short arm excavators in tight spaces, making them ideal for tunnelling as well as vibration free and silent demolition of reinforced concrete structures.

The new drum cutters are compact, lightweight but strong. The direct drive KRD drum cutters are available for use on excavators with operating weights from 20t to 40t and are ideal for use on long arm excavators for demolition and shaft sinking applications. They can also be used for soil stabilisation and concrete renovation applications, with intentionally oversized bearings being used to support the cutter drums for a long operating life.

With these additions to the product range, Kemroc states it has the largest number of rotary drum cutters on the market. For excavators in the 20t to 50t range alone

there are three models of different sizes, tailored to the weight and hydraulic capacity of the respective carrier. In addition to the new range of rotary drum cutters, with or without cutter chain, a new KRL range of longitudinal drum cutters for use on excavators with operating weights from 15t to 40t has been introduced. These are designed for use in civil engineering applications such as the cleaning of bored pile heads and excavation of holes for foundations.

A wide range of cutter options are available, including a conversion pack for grinding tree stumps and can also be easily converted into an auger drive unit with the models available for use on excavators from 2t to 70t operating weight. Compact, robust and easy to maintain, these rotation units expand the operating capabilities of all attachments.

Klaus Ertmer, the owner and managing director of Kemroc says of the new developments: "All of our machines are designed to be strong enough to withstand the forces they will be subjected to during normal operating conditions. They create low levels of noise and vibration and they are energy efficient. We can guarantee this because we have been involved in rock cutting technology for more than twenty years and we combine our experience with the needs of the customer when we design and build our products. We want to make our range even better and larger. For this purpose we have recently expanded our design department and we will introduce further additions to the product range later this year."

## PROMOVE XP3100

Costruttori Spa, a company specialising in the construction of tunnels, was awarded the contract for the execution of the construction works for tunnels for the road S.S. 652 Fondovalle Sangro in April 2019. In order to undertake its work, the company chose Promove hammers for the work involved, including 2,465m of tunnels and viaducts.

During the construction, a Promove XP3100 breaker was used making average progress of 1m every 4h during a 16h working day. During the demolition phase 'in the shell' (the most delicate phase of the operation where the breaker works in an almost vertical position) the hammer is heavily stressed. Thanks to combined gas and oil technology, the XP3100 significantly reduces the stresses transmitted to the excavator with the impact force of the piston not affected by the position of the hammer. For this special application the hammer is set up with a compressed air system and dust cover on

the tool to prevent dust and debris from entering the hammer, which could reach the piston and damage it irreparably. The Promove breaker delivered high levels of reliability and productivity, drawing on its distinctive characteristics designed specifically for the needs of the demolition industry.



## Delete partnering the deCOmm project developing nuclear power plant decommissioning into a business

VTT Technical Research Centre of Finland Ltd newly launched the two-year deCOmm (Finnish Ecosystem for New International Decommissioning Services) project to develop nuclear power plant decommissioning into a business with partnering companies.

The world's nuclear power plants are approaching the age of retirement. The dismantling and after-care of a single nuclear power plant can take more than 10 years, and the total cost may be up to one billion euros. Over the next 20 years, around 10-15 reactors will be decommissioned worldwide each year says deCOmm project manager Tapani Rynnänen from VTT.

deCOmm project aims to construct a strong ecosystem during the coming years that could come together and manage even large decommissioning projects. VTT's own FiR1 research reactor shut down five years ago acts as the pilot project. According to the FiR1 project manager Markus Airila the decommissioning of the FiR1 research reactor and associated laboratory facilities is a good pilot project when aiming for the commercial reactor decommissioning market.

VTT is responsible for the research side of the deCOmm project, and there are currently seven business partners involved. Delete is developing a demolition robot for nuclear power plant decommissioning worksites in a parallel company-project that is also partially funded by Business Finland.

"Nuclear decommissioning is demanding and precise work for which Delete's experience makes us uniquely qualified for. Participation in deCOmm will assist in bringing Delete's specialist knowledge together with other leaders of the industry. Meeting the high safety standards and efficient operations requires combining innovation and modern technology" says Nikolas Ruotsalainen, International Trade Manager for Delete about Delete's role in deCOmm project.

### Delete's experience in nuclear plant decommissioning

Delete is at current working with nuclear decommissioning in Sweden. The company signed a contract with Uniper covering the decommissioning of the Swedish Oskarshamn and Barsebäck nuclear power plant generators, motors and their support systems. The project is the first phase of the decommissioning project and part of the decommissioning of the turbine halls. Of the 12 commercial reactors in Sweden these four are now being decommissioned. Delete aims to responsible, reliable, high safety standard meeting and efficient operations in the project.

Delete has earlier worked with nuclear power plant decommissioning in the Swedish Studsvik research reactor.



**+ PLUS LINE**

# A CONCEPT OF A NEW BOOSTER LINE



Come visit us at  
**CONEXPO'20**  
Silver Lots 1 & 2  
**S5372**

## **SaMoTer**

PADIGLIONE 10 • STAND F2

**V.T.N. EUROPE S.P.A.**

Via dell'Artigianato 41/43

36026 Cagnano di Poiana Maggiore · VI · Italy

[vtn@vtngroup.com](mailto:vtn@vtngroup.com)

[www.vtneurope.com](http://www.vtneurope.com)



A DIFFERENT WAY



# THE ONE LAS VEGAS SHOW YOU NEED TO SEE



**NORTH AMERICA'S LARGEST  
CONSTRUCTION TRADE SHOW**

**CONEXPOCONAGG.COM**

**MARCH 10-14, 2020 | LAS VEGAS, USA**

## Two new CB 'Concrete Busters'

Epiroc has added two new models for heavier carriers to its popular CB Concrete Buster range. The CB 5500 and CB 7500 are designed for carriers in the 50t to 85t weight class, which due to their comparatively light weight means that they are effective choices for use with high reach or long front carriers. They are also suitable for use where noise is an issue and can be used in residential areas where hydraulic breakers are not permitted.

CB Concrete Busters with their wide jaw openings and high crushing forces, have proved to be ideal for demolishing thick foundation walls whilst also making light work of 'cracking' girders and heavy concrete at extreme heights. They are equipped with two powerful hydraulic cylinders which deliver a virtually continuous closing force for maximum productivity. The hydraulic cylinders are fully protected by piston rod guards whilst an integrated speed valve delivers faster working cycles. Offering impressive cracking forces of up to 190t - depending on the model - CB Concrete Busters are equipped with two independently moving jaws that eliminate displacement force, thus lowering stress levels. Cutting blades are both replaceable and reversible.



A productive feature on all CB Concrete Busters is 360° endless hydraulic rotation, which allows precise handling and optimal positioning. If the cutter grips the material at an oblique angle, a built in pressure relief valve allows a 'self-acting' movement that brings the cutter jaw into the ideal position. This valve effectively protects both the carrier and the cutter from potentially damaging reaction forces.

The new CB 5500 and CB 7500 models offer cracking forces of 150t and 190t respectively, whilst jaw openings for the models are 1,600mm and 1,800mm. The complete CB range now comprises of six models with service weights from 320kg to 7,400kg, for carriers weighing from 2t to 85t.

[www.epiroc.com](http://www.epiroc.com)

## CSDA announces new executive director

The Concrete Sawing and Drilling Association (CSDA) has announced the appointment of Erin O'Brien as its next executive director following the retirement of Patrick O'Brien. Pat retires after having served as executive director for the CSDA since 1992 and was one of the IACDS founding members.



According to CSDA president, Matthew Finnigan, Erin O'Brien has been intimately involved with the operations of the association for the past 10 years, and states: "This new chapter creates the opportunity for innovation as well as the growth of programmes for members." Erin's first act as executive director was at the World of Concrete in Las Vegas, and she will also lead the Annual Convention & Tech Fair in Carlsbad, CA from 31 March to 4 April.

PDi Magazine would like to thank Patrick O'Brien for all his years of dedication to the industry, especially during the several years Pat was a regular columnist in the magazine. We also would like to congratulate Erin for her new and well deserved position as new the executive director of the CSDA.

[www.csda.org](http://www.csda.org)

## Dymatec introduces 'Cuttronic' drilling system

Dymatec has proudly entered the high performance core drilling market following the introduction of its Cuttronic drilling system. Key features include brushless ISRC-drive technology that offers 10kW nominal output mechanical power on three phase 400V. The drill motor provides easy cutting of concrete up to a 1,000mm diameter with up to 600Nm of torque. With three gearbox options to choose from and a choice of drill column heights, the system has been designed for deep drilling and large diameter holes.

The mechanical output power and efficiency that the system is capable of is said to exceed that of hydraulic and high frequency core drill motors, and is quick and easy to set up as an external power pack is not required. A CM10AF automatic drilling version will be available later this year and will come with a remote control option. The final addition to the range, which will be added soon, is a modular wire saw and wall saw which and is said will provide the professional user with a completely new concrete drilling and cutting experience.

Should any readers be interested in a demonstration or require more information, they are advised to contact Dymatec via: [sales@dymatecuk.com](mailto:sales@dymatecuk.com) or [sales@dymatecusa.com](mailto:sales@dymatecusa.com).

[www.dymatecuk.com](http://www.dymatecuk.com)  
[www.dymatecusa.com](http://www.dymatecusa.com)



## RONDA® VACUUMS FOR LIFE



Heavy duty vacuum cleaners with filter technology second to none



DUST EXTRACTORS  
H-CLASS

RONDA® 200H Power



DUST EXTRACTORS  
H-CLASS

RONDA® 1800H Power



VACUUM CLEANERS  
H-CLASS

RONDA® 2800H



WATER SLUDGE  
RECYCLING

RONDA® 350

A large step towards a healthy work environment

V. BRØNDUM A/S

See the full range of RONDA® vacuum cleaners on [www.brondum.com](http://www.brondum.com)





The award-giving ceremony hosted by Elena Kelep - Mrs. Russia and Mrs. Universal Grand Prix 2019.

Artem Kondratyev, the general manager and creative force behind the Russian Demolition Forum.

**'WIND OF CHANGE' BLOWS THROUGH THE**

# Russian demolition industry

***Otto von Bismarck, the first chancellor of a united Germany and an eloquent speaker famous for his witty laconic remarks, once said of the Russian cavalry, "they saddle up slow, but ride fast". That sums up the Russian character in a nutshell. We do tend to take our time in making a decision, but once our mind is made up there is no stopping us. I have been hearing people talking about the necessity of creating a demolition association in Russia since 2006 when I first joined the industry. For years, however, it remained little more than a palaver until a man came along who jumpstarted real change and organised the first ever Russian Demolition Forum. PDi's Andrei Bushmarin reports.***

Russia is not only rich in natural resources; its main asset, wealth and treasure are its people - something that the Russian powers that be are yet to fully comprehend. Russians are intelligent, well-educated and hard-working and they always accomplish whatever task they set their mind to. In this sense, Artem Kondratyev, the general manager and creative force behind the Russian Demolition Forum, is as Russian as it gets, the quintessential Russian.

## Russian go getter

Artem Kondratyev hails from Rostov-on-Don, the biggest port city located in the south of Russia. An alumnus of the Southern Federal University with degrees in economics and law, he moved to Saint Petersburg in 2016 where he became involved in the demolition business working

for a major demolition company. Winning contracts is not easy anywhere, but in the Russian construction and demolition game it requires extra effort. A born go getter, Artem became a valuable member of the team and was soon appointed head of the Moscow division. He represented the Russian demolition industry at the 10th World Demolition Summit in Dublin in 2018. It was in Dublin that he comprehended the benefits of working within the framework of a trade association and how sorely the Russian demolition community was lacking. From that moment on, he decided to put his considerable energy into creating a unified platform for demolition professionals in Russia. A year and a half later, his vision materialized into the first ever Russian Demolition Forum.

## Exceeding expectations

The one day event, where PDi was the main media partner, took place on 5 February 2020 at the Korston Club Hotel in Moscow. The choice of venue was somewhat symbolic, given that the hotel is earmarked for demolition in the coming months. The turnout exceeded the organisers' wildest expectations, with some 110 delegates representing 60 companies attending the forum. As important as numbers are, it is the quality and status of the speakers and attendees that make all the difference in the end. And there was no shortage of top notch industry figures at the forum.

Francisco Cobo, the president of the European Demolition Association, kicked off the event with a speech extolling the virtues of being part of the association and presented Artem Kondratyev with an appreciation

certificate for a job well done. He was followed by Jose Blanco, the EDA's secretary general, who delivered a presentation dedicated to the latest trends in demolition, recycling and decontamination. Then seven speakers from Italy, the UK, Australia, the Netherlands, Finland and Serbia, all well-known and respected names in the global demolition community, presented selected case studies to the audience.

## Mission accomplished: association is shaping out

The event's grand finale was the award ceremony for the best demolition projects. For over a year, Russian contractors were submitting entries for the Forum committee to evaluate. In the category 'Collaborative Demolition', the winners were 'Stroicoresurs', 'Viva-Trans' and 'Crushmash Group'. 'Tehkno Digger' won the 'Residential Demolition' category. 'Ecosnos Group' was presented with the 'Industrial Demolition' award. In the category 'Best Environmental Practices', the winner was 'JBS Engineering'. 'AlexanderGRAD' took 'The Implosion Demolition' award, and 'Sfera Rezki' received the 'Non-destructive Demolition' trophy. The awards were presented to the winners by Elena Kelep, a model and singer/songwriter, and herself the holder of Mrs. Russia and Mrs. Universal Grand Prix 2019 titles. However, the most important outcome of the Russian Demolition Forum was that on 6 February 2020, 25 demolition companies signed a 'Memorandum of Intent' aimed at creating Russia's Professional Demolition Association.

[www.rusdemolition.ru](http://www.rusdemolition.ru)



Nikolas Ruotsalainen, the International Trade Manager with Finland-based demolition and recycling specialist Delete Oy.



Dmitry Sosin, Stanley LaBounty's Sales Manager for Russia, CIS, Baltic states, Scandinavia and Poland, with the Russian customers.

# WE DELETE YOUR PROBLEMS

Demolition is one of Delete's core competencies and no job is too complex for us. We take care of all demolition tasks of all sizes in the Nordics as well as demanding projects all around Europe. We have extensive demolition references of different sites from residential and commercial buildings to industrial sites, pulp and paper mills, coal power plants, steel mills, windmills and even demanding demolition after destructive fires. With our customized fleet and purpose built equipment, our engineers provide a unique solution for every site. Delete has offices in Finland and Sweden, with project-based operations throughout Europe.

Contact us: [info@delete.fi](mailto:info@delete.fi)



Delete Demolition Ltd is one of the leading full service provider of demolition services in the Nordic countries. We offer heavy demolition, renovation demolition, asbestos and hazardous material demolition, inspection surveys of indoor air quality, asbestos and other hazardous material.

For more info visit: [www.delete.fi/en](http://www.delete.fi/en)

# Delete





**HAMMER SET TO**

# conquer the world

***Hammer offers full line of attachments for demolition, excavating, material handling and recycling.***

**T**he Italian manufacturer Hammer based in Molfetta, Italy, has radically strengthened its presence in the global arena, now offering full lines of professional tools and attachments for the demolition and recycling industries.

## **Huge product range**

Amongst its offering, Hammer has two breaker ranges, SB and FX series. The SB series for lighter carriers has eight models from 70kg up to 540kg that are suitable for carriers from 0.5t to 11t. The FX range comprises of 14 models ranging from 700kg to 14.5t, for carriers between 8t and 200t. For silent demolition, Hammer has six different ranges, comprising of FP static pulverisers, FR rotating pulverisers, FK rotating pulverisers, FRK rotating demolition pulverisers, NGK booster rotating pulverisers, MQO multi quick processors and a series of drum cutters. Each of the individual series contains several different models of up to 12 models.

Additionally Hammer has a series of demolition and sorting grapples comprising of 10 different models, as well as a concrete crushers series, MCK, comprising of 10 different models with operating weights ranging from 3t to 80t. The KSC line of scrap shears contains

five models, ranging in weight from 480kg to 4,100kg. Last but not least, Hammer has two series of crushing and screening buckets. The latter is called the KB Series and contains four models for excavators from 12t to 40t. Its rotary screening buckets are called KR

and the series also comprises of four models for carriers between 8t to 60t.

Combined, Hammer has a highly very impressive product range with the products being sold throughout the world. During 2019 Hammer was acquired by the







# ENHANCE YOUR PRODUCTIVITY

High Frequency Electric  
Wall Saw DST 20-CA



**CUTASSIST**

## Enhance your productivity.

Hilti has set a new standard with its latest generation of DST 20-CA wall saws. The new saws provide a 30 percent increase in power compared to the previous generation, while having three times the starting torque. The DST 20-CA high frequency electric wall saw is the first saw in its power class without a power box. The integrated electronics in the saw head simplify transport of the saw and make also lengthy set-up times a thing of the past. A cordless remote control displays the cutting depth in real time. Thanks to the integrated CutAssist system the saw operates on a hands-free basis.







German manufacturer Kinshofer which is part of the Lifco Group, which also includes Brokk.

### Eight production plants

Hammer started when Giovanni Modugno in 1970 started work as a mechanic in a small turnery workshop in Molfetta. Following many changes of role, he became both a factory manager and production manager. In 1989 until 2004 Modugno together with some partners ran a company producing hydraulic demolition breakers. In 2004 he founded together with his son Valerio, a family company for the design, production and sale of hydraulic breakers, which was named 'Hammer'. The

values of the family company have allowed Hammer to establish itself on the global stage through 10 branches and a network of dealers and authorised workshops located throughout the world.

Hammer products are 100% Italian made, and are of the highest quality. They are all entirely designed and manufactured in 8 plants (totalling an area of 30,000 m<sup>2</sup>) located in the industrial area of Molfetta. Hammer began with the design, production and sale of small and medium sized hydraulic breakers, in addition to the sale of multi brand spare parts. Some years later came the introduction of the first examples of demolition crushers, which paved the way for entry into the demolition

and recycling market. At this point, Hammer decided to expand its range of hydraulic breakers with the FX 15000 model which, with a weight of 145,00 kg, which became the largest hydraulic breaker in the world.

After the success enjoyed in demolition and recycling, Hammer introduced the SB series that benefits user operations through its monoblock construction. This feature gives the structure high resistance to leverage efforts, with the breaker being built in one piece with there being no side bolts or diaphragms. Following the successful launch of the SB series, all the other attachments were successfully introduced.

**[www.hammereurope.com](http://www.hammereurope.com)**



**Concrete machines  
with a french touch!**

✉ [contact@autourdubeton.com](mailto:contact@autourdubeton.com)  
🌐 [www.autourdubeton.com](http://www.autourdubeton.com)



Bush-hammering Scoot



Steel dust shrouds (Ø90, 120, 155, 180)



Rubber dust shrouds (Ø125, 180)

**FOLLOW US ON:**

**f Au TOUR DU BÉTON** **G Au TOUR DU BÉTON** **▶ Au TOUR DU BÉTON** **@ATDB**

# DURATIQ™

Engineered for you



8

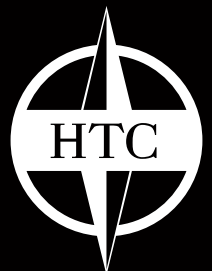
6

5

## DURATIQ™

A floor grinding machine platform with innovations, features, solutions and details matching the clearly set requirements and expectations of professional users and specialists the world over. With the DURATIQ, HTC has set an entirely new standard for reliability, precision and control. A unique combination of intelligence and raw power. So you can focus on the floor.

[www.htc-floorsystems.com](http://www.htc-floorsystems.com)







# HAMMER FX15000 THE BIGGEST HAMMER IN THE WORLD

WITH OUR  
PASSION  
ALWAYS AT  
YOUR  
SERVICE!



VIA OLEIFICI DELL'ITALIA MERIDIONALE, LOTTO G1, 70056 MOLFETTA BA, ITALY  
INFO@HAMMEREUROPE.COM  
(+39) 080.337.5317



[WWW.HAMMEREUROPE.COM](http://WWW.HAMMEREUROPE.COM)

WE SELL SOLUTIONS AND INNOVATIONS FOR DEMOLITION